

Converting Colors

YUV(213.2040, -6.0166,
16.4841)

Have a look what the booklet for
YUV(213.2040, -6.0166, 16.4841)
contains.

YUV(213.2040, -6.0166, 16.4841)	3
<i>Conversions</i>	4
<i>Details</i>	6
<i>Harmonies</i>	12
<i>Previews</i>	24
<i>Color Blindness Simulation</i>	28
<i>CSS Examples</i>	31

Color

**YUV(213.2040, -6.0166,
16.4841)**

Conversions

Conversions Part 1

Format	Color
Hex	E8CEC9
RGB	232, 206, 201
RGB Percent	91%, 81%, 79%
CMY	0.0902, 0.1922, 0.2118
CMYK	0.00, 0.11, 0.13, 0.09
HSL	10°, 40%, 85%
HSV	10°, 13%, 91%
XYZ	65.8926, 65.5155, 64.4312
YIQ	213.2040, 17.1010, 3.9570

Conversions

Conversions Part 2

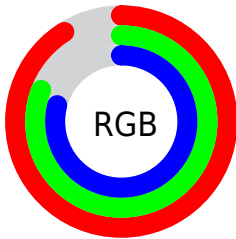
Format	Color
R_{YB}	232, 207, 201
Decimal	15257289
CIE _{Lab}	84.75, 8.26, 5.80
CIE _{LCh}	85, 10.092, 35.047
Yxy	65.5155, 0.3365, 0.3345
Android (android.graphics.Color)	4293447369 (0xFFE8CEC9)
YUV	213.2040, -6.0166, 16.4841
Hunter-Lab	80.9416, 3.6647, 9.4631

Details

The YUV color $213.2040, -6.0166, 16.4841$ is a light color, and the websafe version is hex FFCCCC . A complement of this color would be $219.7960, 6.0166, -16.4841$, and the grayscale version is $213.0000, 0.0000, 0.0000$.

A 20% lighter version of the original color is $255.0000, 0.0000, 0.0000$, and $158.6060, -5.7218, 15.2545$ is the 20% darker color. If you saturate the color by 10%, you get $199.4290, -10.5645, 28.5648$, and if you desaturate by 10%, it is $226.9790, -1.4686, 4.4034$.

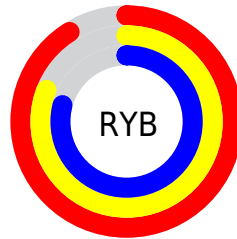
Distribution



Red (91%)

Green (81%)

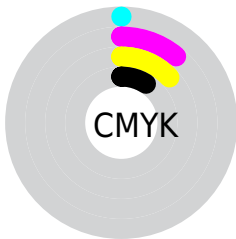
Blue (79%)



Red (91%)

Yellow (81%)

Blue (79%)

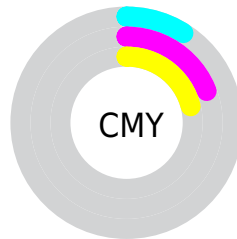


Cyan (0%)

Magenta (11%)

Yellow (13%)

Black (9%)



Cyan (9%)

Magenta (19%)

Yellow (21%)

Brightness & Saturation Gradients

These gradients show how the YUV color 213.2040, -6.0166, 16.4841 changes by changing the brightness by 10 percent. The first figure shows a shift by +10% for each color and the second figure -10%.

Similar to the brightness gradients but the following saturation gradients show a change of the YUV color 213.2040, -6.0166, 16.4841 by changing the saturation by 10% instead.

■ 213.2040, -6.0166,
16.4841

■ 213.2040, -6.0166,
16.4841

255.0000, 0.0000,
0.0000

■ 185.3180, -5.5798,
16.3841

■ 158.6060, -5.7218,
15.2545

■ 132.3070, -5.5744,
14.6398

■ 107.1220, -4.9901,
13.9250

■ 82.8230, -4.8427,
13.3102

■ 59.5240, -4.6953,
12.6955

■ 37.9260, -4.4005,

11.4659

■ 15.5950, -5.7163,
13.5102

■ 0.0000, 0.0000,
0.0000

■ 213.2040, -6.0166,
16.4841

■ 213.2040, -6.0166,
16.4841

■ 199.4290,
-10.5645, 28.5648

■ 226.9790, -1.4686,
4.4034

■ 185.0670,
-14.8230, 41.1602

■ 241.3410, 2.7899,
-8.1921

■ 171.1780,
-19.8078, 53.3409

■ 248.1230, 3.3904,
-14.1399

■ 156.8160,
-24.0663, 65.9364

■ 143.0410,
-28.6142, 78.0170

■ 128.6790,
-32.8727, 90.6125

■ 114.9040,
-37.4207, 102.6932

■ 100.4280,
-42.1160, 115.3886

■ 91.0870, -44.9059,
123.5807

Harmonies

Analogous

The Analogous color harmony consists of three colors that are next to each other on the color wheel.



213.6430, -1.7960, 16.0991



213.2040, -6.0166, 16.4841



212.1990, -8.4791, 12.9805

Triad

The Triadic color harmony groups three colors that are evenly spaced from another and form a triangle on the color wheel.



213.2040, -6.0166, 16.4841



209.4240, -3.1670, -10.8958



211.6600, 9.0416, -6.7178

Complementary

The Complementary color scheme is a pair of colors which are on the opposite of each other on the color wheel.



213.2040, -6.0166, 16.4841



219.7960, 6.0166, -16.4841

Split Complementary

Split-complementary colors differ from the complementary color scheme. The scheme consists of three colors, the original color and two neighbors of the complement color.



210.2030, 8.7739, -14.2100



213.2040, -6.0166, 16.4841



208.4710, 2.2328, -16.1991

Square

The Square scheme is like the rectangle color scheme, but the four colors are evenly spaced on the color wheel.



213.2040, -6.0166, 16.4841



209.8550, -6.8305, -2.5038



208.8990, 6.4588, -18.3284



213.1450, 6.8305, 2.5038

Rectangle

The Rectangle color scheme consists of four colors that form a rectangle on the color wheel.



213.2040, -6.0166, 16.4841



211.3510, -9.0470, 8.4622



208.8990, 6.4588, -18.3284



211.0510, 9.3419, -9.6917

Sweetspot

The Sweet Spot groups the original color and five complimentary colors.



213.2040, -6.0166, 16.4841



248.5770, -1.7635, 5.6330



213.2330, 6.7871, 16.4587



123.6800, -1.3212, 3.7886



0.0000, 0.0000, 0.0000



128.0000, 0.0000, 0.0000

Same Dimension

The Same Dimension uses a secret algorithm to generate beautiful new colors.



213.2040, -6.0166, 16.4841



230.3680, -8.0694, 21.6023



222.0090, -10.3574, 8.7621



107.7620, -2.3477, 6.3477



70.5440, -34.7782, 95.1159



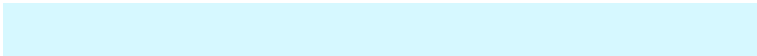
19.9450, -9.8329, 27.2352

Inverse Universe

The Inverse Universe completely reimagines the original color for something new.



219.7960, 6.0166, -16.4841



238.6320, 8.0694, -21.6023



210.9910, 10.3574, -8.7621



110.2380, 2.3477, -6.3477



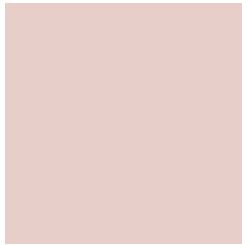
108.4560, 34.7782, -95.1159



31.0550, 9.8329, -27.2352

Previews

White Background



This preview shows how the YUV color 213.2040, -6.0166, 16.4841 looks on a white background.

Color Contrast Check

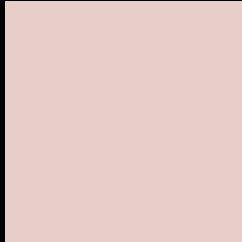
Large Text (above 18pt) WCAG AA × Fail

Any Text WCAG AA × Fail

Large Text (above 18pt) WCAG AAA × Fail

Any Text WCAG AAA × Fail

Black Background



This preview shows how the YUV color 213.2040, -6.0166, 16.4841 looks on a black background.

Color Contrast Check

Large Text (above 18pt) WCAG AA ✓ Pass

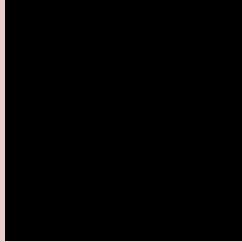
Any Text WCAG AA ✓ Pass

Large Text (above 18pt) WCAG AAA ✓ Pass

Any Text WCAG AAA ✓ Pass

If you want to check with other color combinations, try the [Color Contrast Checker](#).

YUV 213.2040, -6.0166, 16.4841 Background



This preview shows how black text looks on a background with the YUV color 213.2040, -6.0166, 16.4841.

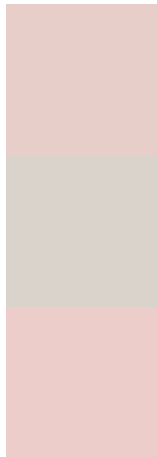


This preview shows how white text looks on a background with the YUV color 213.2040, -6.0166,

Color Blindness Simulation

Color vision deficiency is a very complex topic, and I could not describe the different causes any better than Wikipedia does, so if you want to learn more, you should check out their [article about color blindness](#).

Dichromacy



Original Color

213.2040, -6.0166, 16.4841

Protanopia

211.9960, -3.9420, 4.3885

Deuteranopia

213.8130, -6.3168, 19.4580



Tritanopia

214.0930, 2.4192, 17.4584

Trichromacy



Original Color

213.2040, -6.0166, 16.4841

Protanomaly

212.2030, -4.5371, 8.5920

Deuteranomaly

213.5140, -6.1694, 18.8432

Tritanomaly

213.5830, -0.7804, 17.0287

Monochromacy



Original Color

213.2040, -6.0166, 16.4841

Achromatopsia

213.0000, 0.0000, 0.0000

Achromatomaly

212.8760, -1.9109, 6.2477

CSS Examples

Text

The CSS property to change the color of the text to YUV 213.2040, -6.0166, 16.4841 is called "color". The color property can be set on classes, ids or directly on the HTML element.

This example shows how text in the color `rgb(232, 206, 201)` looks like.

```
.text, #text, p{  
    color:rgb(232, 206, 201)  
}
```

If you want to add a text shadow in that color use the text-shadow property, you can generate a text shadow directly with our [CSS Text Shadow Generator](#).

Here you see how black text with a 4 pixel rgb(232, 206, 201) colored shadow looks like.

```
.shadow{ text-shadow: 4px 4px 2px rgb(232, 206, 201) }
```

Border

The CSS property to change the border of an element to YUV 213.2040, -6.0166, 16.4841 is called "border". The border property can be set on classes, ids or directly on the HTML element.

This example shows the color as border, it can be applied via the CSS property "border" or "border-color".

```
.border, #border, table{ border:4px solid rgb(232, 206, 201) }
```


If only the border color should be changed use the property `border-color`.

```
.border{ border-color:rgb(232, 206, 201) }
```

If you want to add a box shadow in that color use:

Here you see how a box with a 4 pixel `rgb(232, 206, 201)` colored shadow looks like.

```
.boxshadow{ -moz-box-shadow:4px 4px 4px  
4px rgb(232, 206, 201); -webkit-box-  
shadow:4px 4px 4px 4px rgb(232, 206, 201);  
box-shadow:4px 4px 4px 4px rgb(232, 206,  
201) }
```

Background

The CSS property to change the background color of an element to YUV 213.2040, -6.0166, 16.4841 is called "background". The background property can be set on classes, ids or directly on the HTML element.

```
.background, #background, body{  
background: rgb(232, 206, 201) }
```

If only the background color should be changed can be used:

```
.background{ background-color: rgb(232,  
206, 201) }
```

This example shows the color as background, it is applied via the CSS property "background".

To optimize and compress your CSS code, you can use our [online CSS compressor and optimizer](#) based on csstidy. If you want to create a linear or radial gradient as background or border, check our [CSS Gradient Generator](#).

Hey! You found this booklet interesting? Support Converting Colors with the new Membership Option!

The pro membership hides all ads, plus gives you double the colors in the color bucket, and more awesome pro features!

[Learn more, Memberships starting at \\$2.50/m!](#)

**Follow me
on Twitter!**

@ConvertingColor