

Converting Colors

YUV(213.3880, -5.1213, 9.3067)

Have a look what the booklet for
YUV(213.3880, -5.1213, 9.3067)
contains.

YUV(213.3880, -5.1213, 9.3067)	3
<i>Conversions</i>	4
<i>Details</i>	6
<i>Harmonies</i>	12
<i>Previews</i>	24
<i>Color Blindness Simulation</i>	28
<i>CSS Examples</i>	31

Color

**YUV(213.3880, -5.1213,
9.3067)**

Conversions

Conversions Part 1

Format	Color
Hex	E0D2CB
RGB	224, 210, 203
RGB Percent	88%, 82%, 80%
CMY	0.1216, 0.1765, 0.2039
CMYK	0.00, 0.06, 0.09, 0.12
HSL	20°, 25%, 84%
HSV	20°, 9%, 88%
XYZ	64.5666, 66.2523, 65.8849
YIQ	213.3880, 10.5910, 0.7910

Conversions

Conversions Part 2

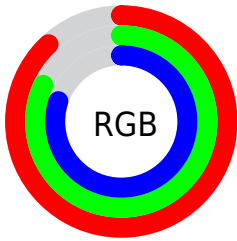
Format	Color
RYB	224, 214, 203
Decimal	14734027
CIELab	85.12, 3.65, 5.19
CIELCh	85, 6.346, 54.875
Yxy	66.2523, 0.3282, 0.3368
Android (android.graphics.Color)	4292924107 (0xFFE0D2CB)
YUV	213.3880, -5.1213, 9.3067
Hunter-Lab	81.3955, -0.8479, 8.9851

Details

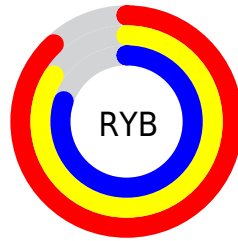
The YUV color $213.3880, -5.1213, 9.3067$ is a light color, and the websafe version is hex `CCCCCC`. A complement of this color would be $213.6120, 5.1213, -9.3067$, and the grayscale version is $213.0000, 0.0000, 0.0000$.

A 20% lighter version of the original color is $255.0000, 0.0000, 0.0000$, and $159.0890, -4.9739, 8.6919$ is the 20% darker color. If you saturate the color by 10%, you get $202.0750, -10.3900, 19.2282$, and if you desaturate by 10%, it is $224.7010, 0.1474, -0.6148$.

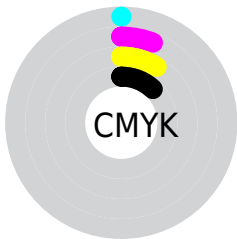
Distribution



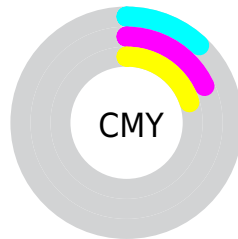
- Red (88%)
- Green (82%)
- Blue (80%)



- Red (88%)
- Yellow (84%)
- Blue (80%)



- Cyan (0%)
- Magenta (6%)
- Yellow (9%)
- Black (12%)



- Cyan (12%)
- Magenta (18%)
- Yellow (20%)

Brightness & Saturation Gradients

These gradients show how the YUV color 213.3880, -5.1213, 9.3067 changes by changing the brightness by 10 percent. The first figure shows a shift by +10% for each color and the second figure -10%.

Similar to the brightness gradients but the following saturation gradients show a change of the YUV color 213.3880, -5.1213, 9.3067 by changing the saturation by 10% instead.

■ 213.3880, -5.1213,
9.3067

■ 213.3880, -5.1213,
9.3067

255.0000, 0.0000,
0.0000

■ 185.5020, -4.6845,
9.2067

■ 159.0890, -4.9739,
8.6919

■ 132.7900, -4.8265,
8.0772

■ 107.2030, -4.5371,
8.5920

■ 83.0180, -3.9529,
7.8772

■ 59.7190, -3.8055,
7.2624

■ 38.4200, -3.6581,

6.6477

■ 17.2630, -5.5527,
7.6623

■ 0.0000, 0.0000,
0.0000

■ 213.3880, -5.1213,
9.3067

■ 213.3880, -5.1213,
9.3067

■ 202.0750,
-10.3900, 19.2282

■ 224.7010, 0.1474,
-0.6148

■ 190.6480,
-16.0955, 29.2497

■ 236.1280, 5.8529,
-10.6363

■ 179.3350,
-21.3642, 39.1712

■ 245.7310, 4.5696,
-19.0581

■ 167.9080,
-27.0696, 49.1927

■ 156.5950,
-32.3383, 59.1142

■ 145.2820,
-37.6070, 69.0357

■ 133.8550,
-43.3125, 79.0572

■ 123.1290,
-48.8706, 88.4639

■ 111.7020,
-54.5761, 98.4853

Harmonies

Analogous

The Analogous color harmony consists of three colors that are next to each other on the color wheel.



213.9690, -2.9427, 10.5512



213.3880, -5.1213, 9.3067



212.8390, -5.8366, 5.4032

Triad

The Triadic color harmony groups three colors that are evenly spaced from another and form a triangle on the color wheel.



213.3880, -5.1213, 9.3067



210.6460, 0.1745, -9.3365



212.9660, 4.9468, 0.0298

Complementary

The Complementary color scheme is a pair of colors which are on the opposite of each other on the color wheel.



213.3880, -5.1213, 9.3067



213.6120, 5.1213, -9.3067

Split Complementary

Split-complementary colors differ from the complementary color scheme. The scheme consists of three colors, the original color and two neighbors of the complement color.



212.1610, 5.8366, -5.4032



213.3880, -5.1213, 9.3067



210.7320, 3.0901, -11.1660

Square

The Square scheme is like the rectangle color scheme, but the four colors are evenly spaced on the color wheel.



213.3880, -5.1213, 9.3067



210.9840, -2.4571, -5.2480



211.3130, 5.2687, -9.9215



214.1300, 2.8939, 5.1480

Rectangle

The Rectangle color scheme consists of four colors that form a rectangle on the color wheel.



213.3880, -5.1213, 9.3067



212.2300, -5.5364, 2.4293



211.3130, 5.2687, -9.9215



212.7700, 5.5364, -2.4293

Sweetspot

The Sweet Spot groups the original color and five complimentary colors.



213.3880, -5.1213, 9.3067



251.1530, -2.0474, 3.3738



210.8750, 3.0196, 11.5106



124.9680, -1.4632, 2.6591



0.0000, 0.0000, 0.0000



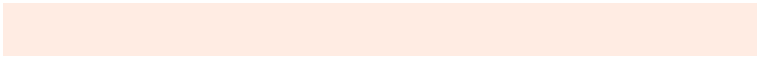
128.0000, 0.0000, 0.0000

Same Dimension

The Same Dimension uses a secret algorithm to generate beautiful new colors.



213.3880, -5.1213, 9.3067



240.6550, -6.7319, 12.5806



219.8450, -8.3046, 3.6439



106.6370, -2.7790, 4.7034



87.2570, -43.0177, 77.8276



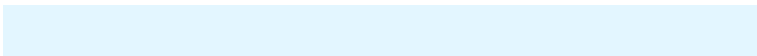
23.7440, -11.7058, 21.2725

Inverse Universe

The Inverse Universe completely reimagines the original color for something new.



213.6120, 5.1213, -9.3067



241.3450, 6.7319, -12.5806



207.7420, 8.0152, -4.1587



106.3630, 2.7790, -4.7034



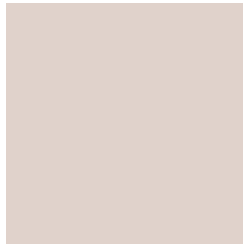
88.7430, 43.0177, -77.8276



24.2560, 11.7058, -21.2725

Previews

White Background



This preview shows how the YUV color 213.3880, -5.1213, 9.3067 looks on a white background.

Color Contrast Check

Large Text (above 18pt) WCAG AA × Fail

Any Text WCAG AA × Fail

Large Text (above 18pt) WCAG AAA × Fail

Any Text WCAG AAA × Fail

Black Background



This preview shows how the YUV color 213.3880, -5.1213, 9.3067 looks on a black background.

Color Contrast Check

Large Text (above 18pt) WCAG AA ✓ Pass

Any Text WCAG AA ✓ Pass

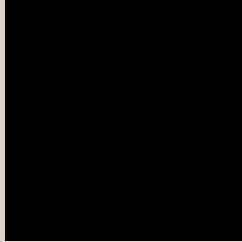
Large Text (above 18pt) WCAG AAA ✓ Pass

Any Text WCAG AAA ✓ Pass

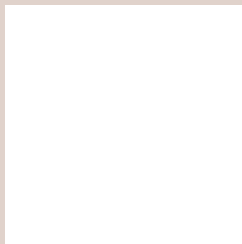
If you want to check with other color combinations, try the [Color Contrast Checker](#).

YUV 213.3880, -5.1213, 9.3067

Background



This preview shows how black text looks on a background with the YUV color 213.3880, -5.1213, 9.3067.



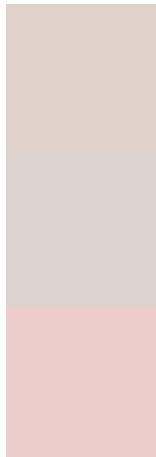
This preview shows how white text looks on a background with the YUV color 213.3880, -5.1213,

9.3067.

Color Blindness Simulation

Color vision deficiency is a very complex topic, and I could not describe the different causes any better than Wikipedia does, so if you want to learn more, you should check out their [article about color blindness](#).

Dichromacy



Original Color

213.3880, -5.1213, 9.3067

Protanopia

212.8820, -4.3788, 4.4885

Deuteranopia

214.1550, -5.0064, 19.1581



Tritanopia

214.8040, 4.0406, 10.6959

Trichromacy



Original Color

213.3880, -5.1213, 9.3067

Protanomaly

212.8930, -4.3842, 6.2328

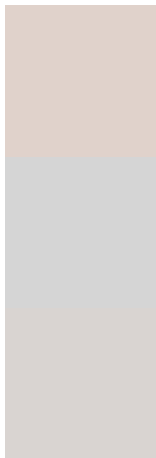
Deuteranomaly

214.1330, -4.9956, 15.6694

Tritanomaly

214.2940, 0.8411, 10.2662

Monochromacy



Original Color

213.3880, -5.1213, 9.3067

Achromatopsia

213.0000, 0.0000, 0.0000

Achromatomaly

213.1530, -2.0474, 3.3738

CSS Examples

Text

The CSS property to change the color of the text to YUV 213.3880, -5.1213, 9.3067 is called "color". The color property can be set on classes, ids or directly on the HTML element.

This example shows how text in the color `rgb(224, 210, 203)` looks like.

```
.text, #text, p{  
    color:rgb(224, 210, 203)  
}
```

If you want to add a text shadow in that color use the text-shadow property, you can generate a text shadow directly with our [CSS Text Shadow Generator](#).

Here you see how black text with a 4 pixel rgb(224, 210, 203) colored shadow looks like.

```
.shadow{ text-shadow: 4px 4px 2px rgb(224, 210, 203) }
```

Border

The CSS property to change the border of an element to YUV 213.3880, -5.1213, 9.3067 is called "border". The border property can be set on classes, ids or directly on the HTML element.

This example shows the color as border, it can be applied via the CSS property "border" or "border-color".

```
.border, #border, table{ border:4px solid rgb(224, 210, 203) }
```


If only the border color should be changed use the property border-color.

```
.border{ border-color:rgb(224, 210, 203) }
```

If you want to add a box shadow in that color use:

Here you see how a box with a 4 pixel rgb(224, 210, 203) colored shadow looks like.

```
.boxshadow{ -moz-box-shadow:4px 4px 4px  
4px rgb(224, 210, 203); -webkit-box-  
shadow:4px 4px 4px 4px rgb(224, 210, 203);  
box-shadow:4px 4px 4px 4px rgb(224, 210,  
203) }
```

Background

The CSS property to change the background color of an element to YUV 213.3880, -5.1213, 9.3067 is called "background". The background property can be set on classes, ids or directly on the HTML element.

```
.background, #background, body{  
background: rgb(224, 210, 203) }
```

If only the background color should be changed can be used:

```
.background{ background-color: rgb(224,  
210, 203) }
```

This example shows the color as background, it is applied via the CSS property "background".

To optimize and compress your CSS code, you can use our [online CSS compressor and optimizer](#) based on csstidy. If you want to create a linear or radial gradient as background or border, check our [CSS Gradient Generator](#).

Hey! You found this booklet interesting? Support Converting Colors with the new Membership Option!

The pro membership hides all ads, plus gives you double the colors in the color bucket, and more awesome pro features!

[Learn more, Memberships starting at \\$2.50/m!](#)

**Follow me
on Twitter!**

@ConvertingColor