

Converting Colors

YUV(213.6340, -8.2006,
16.9840)

Have a look what the booklet for
YUV(213.6340, -8.2006, 16.9840)
contains.

YUV(213.6340, -8.2006, 16.9840)	3
<i>Conversions</i>	4
<i>Details</i>	6
<i>Harmonies</i>	12
<i>Previews</i>	24
<i>Color Blindness Simulation</i>	28
<i>CSS Examples</i>	31

Color

**YUV(213.6340, -8.2006,
16.9840)**

Conversions

Conversions Part 1

Format	Color
Hex	E9CFC5
RGB	233, 207, 197
RGB Percent	91%, 81%, 77%
CMY	0.0863, 0.1882, 0.2275
CMYK	0.00, 0.11, 0.15, 0.09
HSL	17°, 45%, 84%
HSV	17°, 15%, 91%
XYZ	65.9951, 65.9805, 62.0805
YIQ	213.6340, 18.7060, 2.4020

Conversions

Conversions Part 2

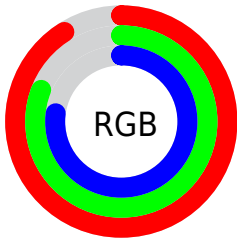
Format	Color
R _{YB}	233, 211, 197
Decimal	15323077
CIE Lab	84.99, 7.47, 8.27
CIE LCh	85, 11.143, 47.933
Yxy	65.9805, 0.3401, 0.3400
Android (android.graphics.Color)	4293513157 (0xFFE9CFC5)
YUV	213.6340, -8.2006, 16.9840
Hunter-Lab	81.2284, 2.8752, 11.5462

Details

The YUV color $213.6340, -8.2006, 16.9840$ is a light color, and the websafe version is hex FFCCCC . A complement of this color would be $216.3660, 8.2006, -16.9840$, and the grayscale version is $214.0000, 0.0000, 0.0000$.

A 20% lighter version of the original color is $254.8860, -0.4368, 0.1000$, and $159.0360, -7.9057, 15.7544$ is the 20% darker color. If you saturate the color by 10%, you get $201.0330, -13.3273, 28.0351$, and if you desaturate by 10%, it is $226.2350, -3.0739, 5.9329$.

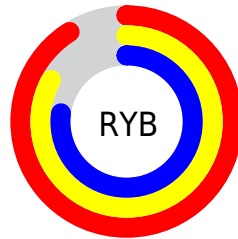
Distribution



Red (91%)

Green (81%)

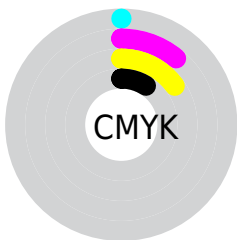
Blue (77%)



Red (91%)

Yellow (83%)

Blue (77%)

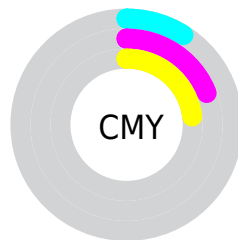


Cyan (0%)

Magenta (11%)

Yellow (15%)

Black (9%)



Cyan (9%)

Magenta (19%)

Yellow (23%)

Brightness & Saturation Gradients

These gradients show how the YUV color 213.6340, -8.2006, 16.9840 changes by changing the brightness by 10 percent. The first figure shows a shift by +10% for each color and the second figure -10%.

Similar to the brightness gradients but the following saturation gradients show a change of the YUV color 213.6340, -8.2006, 16.9840 by changing the saturation by 10% instead.

■ 213.6340, -8.2006,
16.9840

■ 213.6340, -8.2006,
16.9840

255.0000, 0.0000,
0.0000

■ 185.7480, -7.7638,
16.8840

254.8860, -0.4368,
0.1000

■ 159.0360, -7.9057,
15.7544

■ 132.8510, -7.3215,
15.0397

■ 107.5520, -7.1741,
14.4249

■ 83.2530, -7.0267,
13.8101

■ 60.0680, -6.4425,
13.0954

■ 38.1710, -6.0003,

11.2510

■ 16.6120, -8.1897,
13.4953

■ 0.0000, 0.0000,
0.0000

■ 213.6340, -8.2006,
16.9840

■ 213.6340, -8.2006,
16.9840

■ 201.0330,
-13.3273, 28.0351

■ 226.2350, -3.0739,
5.9329

■ 188.3180,
-18.8908, 39.1861

■ 238.9500, 2.4897,
-5.2181

■ 176.3040,
-24.3069, 49.7224

■ 248.4220, 3.2430,
-13.5251

■ 163.7030,
-29.4336, 60.7735

■ 151.1020,
-34.5603, 71.8245

■ 138.3870,
-40.1238, 82.9756

■ 125.7860,
-45.2505, 94.0267

■ 113.1850,
-50.3772, 105.0778

■ 107.8220,
-53.1562, 109.7811

Harmonies

Analogous

The Analogous color harmony consists of three colors that are next to each other on the color wheel.



214.0840, -3.9854, 18.3433



213.6340, -8.2006, 16.9840



212.4330, -10.0735, 11.0213

Triad

The Triadic color harmony groups three colors that are evenly spaced from another and form a triangle on the color wheel.



213.6340, -8.2006, 16.9840



208.9720, -0.9722, -14.8844



212.7960, 9.4676, -3.3291

Complementary

The Complementary color scheme is a pair of colors which are on the opposite of each other on the color wheel.



213.6340, -8.2006, 16.9840



216.3660, 8.2006, -16.9840

Split Complementary

Split-complementary colors differ from the complementary color scheme. The scheme consists of three colors, the original color and two neighbors of the complement color.



210.9690, 10.3683, -12.2508



213.6340, -8.2006, 16.9840



209.0190, 4.4276, -20.1877

Square

The Square scheme is like the rectangle color scheme, but the four colors are evenly spaced on the color wheel.



213.6340, -8.2006, 16.9840



209.7620, -5.7987, -6.8073



209.4690, 8.6428, -18.8283



214.2380, 5.7987, 6.8073

Rectangle

The Rectangle color scheme consists of four colors that form a rectangle on the color wheel.



213.6340, -8.2006, 16.9840



211.4000, -10.0572, 5.7882



209.4690, 8.6428, -18.8283



212.3010, 10.2046, -6.4030

Sweetspot

The Sweet Spot groups the original color and five complimentary colors.



213.6340, -8.2006, 16.9840



248.2350, -3.0739, 5.9329



210.7280, 6.0501, 19.5325



123.5660, -1.7580, 3.8886



0.0000, 0.0000, 0.0000



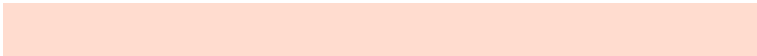
128.0000, 0.0000, 0.0000

Same Dimension

The Same Dimension uses a secret algorithm to generate beautiful new colors.



213.6340, -8.2006, 16.9840



228.9830, -10.8376, 22.8169



224.2000, -13.4096, 7.7176



111.0500, -2.4896, 5.2182



83.4690, -41.1502, 85.5347



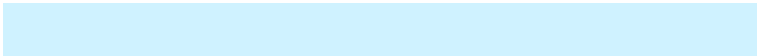
24.9510, -12.3008, 25.4760

Inverse Universe

The Inverse Universe completely reimagines the original color for something new.



216.3660, 8.2006, -16.9840



233.0170, 10.8376, -22.8169



205.8000, 13.4096, -7.7176



111.9500, 2.4897, -5.2181



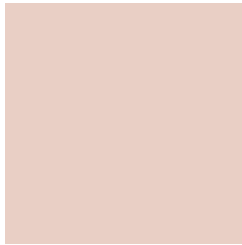
97.5310, 41.1502, -85.5347



29.0490, 12.3008, -25.4760

Previews

White Background



This preview shows how the YUV color 213.6340, -8.2006, 16.9840 looks on a white background.

Color Contrast Check

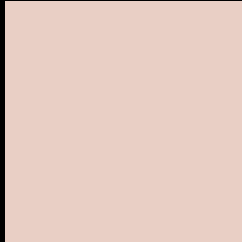
Large Text (above 18pt) WCAG AA × Fail

Any Text WCAG AA × Fail

Large Text (above 18pt) WCAG AAA × Fail

Any Text WCAG AAA × Fail

Black Background



This preview shows how the YUV color 213.6340, -8.2006, 16.9840 looks on a black background.

Color Contrast Check

Large Text (above 18pt) WCAG AA ✓ Pass

Any Text WCAG AA ✓ Pass

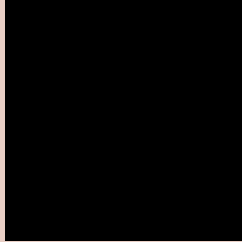
Large Text (above 18pt) WCAG AAA ✓ Pass

Any Text WCAG AAA ✓ Pass

If you want to check with other color combinations, try the [Color Contrast Checker](#).

YUV 213.6340, -8.2006, 16.9840

Background



This preview shows how black text looks on a background with the YUV color 213.6340, -8.2006, 16.9840.

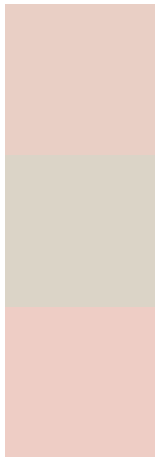


This preview shows how white text looks on a background with the YUV color 213.6340, -8.2006,

Color Blindness Simulation

Color vision deficiency is a very complex topic, and I could not describe the different causes any better than Wikipedia does, so if you want to learn more, you should check out their [article about color blindness](#).

Dichromacy



Original Color

213.6340, -8.2006, 16.9840

Protanopia

212.6110, -6.7102, 5.6032

Deuteranopia

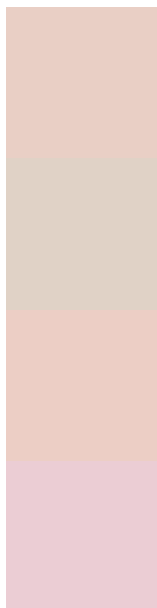
213.9550, -8.3588, 21.0875



Tritanopia

215.3920, 2.2717, 18.0732

Trichromacy



Original Color

213.6340, -8.2006, 16.9840

Protanomaly

212.8180, -7.3053, 9.8066

Deuteranomaly

213.9440, -8.3534, 19.3431

Tritanomaly

214.7680, -1.3646, 17.7435

Monochromacy



Original Color

213.6340, -8.2006, 16.9840

Achromatopsia

214.0000, 0.0000, 0.0000

Achromatomaly

213.6480, -2.7845, 6.4477

CSS Examples

Text

The CSS property to change the color of the text to YUV 213.6340, -8.2006, 16.9840 is called "color". The color property can be set on classes, ids or directly on the HTML element.

This example shows how text in the color `rgb(233, 207, 197)` looks like.

```
.text, #text, p{  
    color:rgb(233, 207, 197)  
}
```

If you want to add a text shadow in that color use the text-shadow property, you can generate a text shadow directly with our [CSS Text Shadow Generator](#).

Here you see how black text with a 4 pixel rgb(233, 207, 197) colored shadow looks like.

```
.shadow{ text-shadow: 4px 4px 2px rgb(233, 207, 197) }
```

Border

The CSS property to change the border of an element to YUV 213.6340, -8.2006, 16.9840 is called "border". The border property can be set on classes, ids or directly on the HTML element.

This example shows the color as border, it can be applied via the CSS property "border" or "border-color".

```
.border, #border, table{ border:4px solid rgb(233, 207, 197) }
```


If only the border color should be changed use the property `border-color`.

```
.border{ border-color:rgb(233, 207, 197) }
```

If you want to add a box shadow in that color use:

Here you see how a box with a 4 pixel `rgb(233, 207, 197)` colored shadow looks like.

```
.boxshadow{ -moz-box-shadow:4px 4px 4px  
4px rgb(233, 207, 197); -webkit-box-  
shadow:4px 4px 4px 4px rgb(233, 207, 197);  
box-shadow:4px 4px 4px 4px rgb(233, 207,  
197) }
```

Background

The CSS property to change the background color of an element to YUV 213.6340, -8.2006, 16.9840 is called "background". The background property can be set on classes, ids or directly on the HTML element.

```
.background, #background, body{  
background: rgb(233, 207, 197) }
```

If only the background color should be changed can be used:

```
.background{ background-color: rgb(233,  
207, 197) }
```

This example shows the color as background, it is applied via the CSS property "background".

To optimize and compress your CSS code, you can use our [online CSS compressor and optimizer](#) based on csstidy. If you want to create a linear or radial gradient as background or border, check our [CSS Gradient Generator](#).

Hey! You found this booklet interesting? Support Converting Colors with the new Membership Option!

The pro membership hides all ads, plus gives you double the colors in the color bucket, and more awesome pro features!

[Learn more, Memberships starting at \\$2.50/m!](#)

**Follow me
on Twitter!**

@ConvertingColor