

Converting Colors

YUV(214.7880, -11.7275,
28.2499)

Have a look what the booklet for
YUV(214.7880, -11.7275, 28.2499)
contains.

YUV(214.7880, -11.7275, 28.2499)	3
<i>Conversions</i>	4
<i>Details</i>	6
<i>Harmonies</i>	12
<i>Previews</i>	24
<i>Color Blindness Simulation</i>	28
<i>CSS Examples</i>	31

Color

**YUV(214.7880, -11.7275,
28.2499)**

Conversions

Conversions Part 1

Format	Color
Hex	F7CBBF
RGB	247, 203, 191
RGB Percent	97%, 80%, 75%
CMY	0.0314, 0.2039, 0.2510
CMYK	0.00, 0.18, 0.23, 0.03
HSL	13°, 78%, 86%
HSV	13°, 23%, 97%
XYZ	69.1177, 66.2476, 58.4344
YIQ	214.7880, 30.0760, 5.5960

Conversions

Conversions Part 2

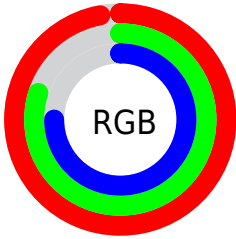
Format	Color
R _Y B	247, 206, 191
Decimal	16239551
CIE Lab	85.12, 13.76, 11.82
CIE LCh	85, 18.136, 40.672
Yxy	66.2476, 0.3566, 0.3418
Android (android.graphics.Color)	4294429631 (0xFFF7CBBF)
YUV	214.7880, -11.7275, 28.2499
Hunter-Lab	81.3926, 9.1430, 14.4087

Details

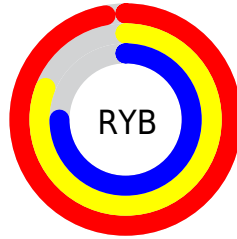
The YUV color $214.7880, -11.7275, 28.2499$ is a light color, and the websafe version is hex FFCCCC . A complement of this color would be $223.2120, 11.7275, -28.2499$, and the grayscale version is $215.0000, 0.0000, 0.0000$.

A 20% lighter version of the original color is $254.0880, -3.4944, 0.7998$, and $160.0050, -10.8485, 26.3056$ is the 20% darker color. If you saturate the color by 10%, you get $200.7850, -17.1490, 40.5306$, and if you desaturate by 10%, it is $228.7910, -6.3060, 15.9693$.

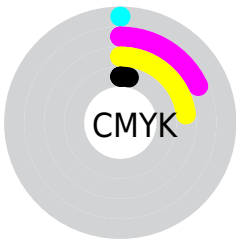
Distribution



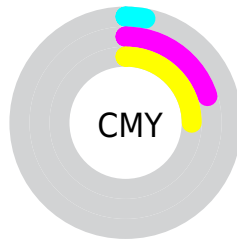
- Red (97%)
- Green (80%)
- Blue (75%)



- Red (97%)
- Yellow (81%)
- Blue (75%)



- Cyan (0%)
- Magenta (18%)
- Yellow (23%)
- Black (3%)



- Cyan (3%)
- Magenta (20%)
- Yellow (25%)

Brightness & Saturation Gradients

These gradients show how the YUV color 214.7880, -11.7275, 28.2499 changes by changing the brightness by 10 percent. The first figure shows a shift by +10% for each color and the second figure -10%.

Similar to the brightness gradients but the following saturation gradients show a change of the YUV color 214.7880, -11.7275, 28.2499 by changing the saturation by 10% instead.

214.7880,
-11.7275, 28.2499

214.7880,
-11.7275, 28.2499

255.0000, 0.0000,
0.0000

187.1900,
-11.4327, 27.0204

254.0880, -3.4944,
0.7998

160.0050,
-10.8485, 26.3056

133.4070,
-10.5537, 25.0761

108.2220, -9.9694,
24.3613

83.3250, -9.5272,
22.5170

59.8410, -8.7956,
21.1874

38.0580, -7.9166,

19.2431

■ 15.4710, -7.6272,
19.7579

■ 0.0000, 0.0000,
0.0000

■ 214.7880,
-11.7275, 28.2499

■ 214.7880,
-11.7275, 28.2499

■ 200.7850,
-17.1490, 40.5306

■ 228.7910, -6.3060,
15.9693

■ 186.3090,
-21.8443, 53.2260

■ 243.2670, -1.6106,
3.2738

■ 172.3060,
-27.2659, 65.5066

■ 252.6080, 1.1793,
-4.9182

■ 157.7160,
-32.3980, 78.3021

■ 143.8270,
-37.3827, 90.4827

■ 129.8240,
-42.8042, 102.7634

■ 115.2340,
-47.9364, 115.5588

■ 104.9640,
-51.7473, 124.5656

Harmonies

Analogous

The Analogous color harmony consists of three colors that are next to each other on the color wheel.



216.0360, -4.4547, 28.9094



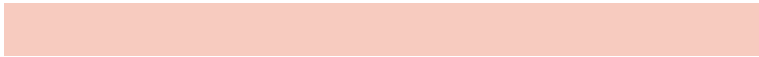
214.7880, -11.7275, 28.2499



213.5930, -16.0683, 20.5279

Triad

The Triadic color harmony groups three colors that are evenly spaced from another and form a triangle on the color wheel.



214.7880, -11.7275, 28.2499



207.6460, -3.2765, -22.4915



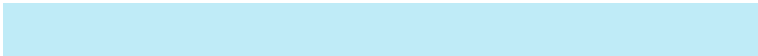
212.8860, 16.3252, -9.5470

Complementary

The Complementary color scheme is a pair of colors which are on the opposite of each other on the color wheel.



214.7880, -11.7275, 28.2499



223.2120, 11.7275, -28.2499

Split Complementary

Split-complementary colors differ from the complementary color scheme. The scheme consists of three colors, the original color and two neighbors of the complement color.



209.3140, 17.1002, -24.8314



214.7880, -11.7275, 28.2499



206.5830, 5.6286, -32.0833

Square

The Square scheme is like the rectangle color scheme, but the four colors are evenly spaced on the color wheel.



214.7880, -11.7275, 28.2499



208.9700, -11.3242, -7.8667



206.9340, 13.3435, -33.2681



214.8450, 11.9084, 7.1519

Rectangle

The Rectangle color scheme consists of four colors that form a rectangle on the color wheel.



214.7880, -11.7275, 28.2499



212.4240, -16.4780, 11.9062



206.9340, 13.3435, -33.2681



211.7820, 17.3625, -15.5948

Sweetspot

The Sweet Spot groups the original color and five complimentary colors.



214.7880, -11.7275, 28.2499



244.7300, -3.8109, 9.0068



212.8740, 11.4011, 29.9285



121.4630, -2.2003, 5.7329



0.0000, 0.0000, 0.0000



128.0000, 0.0000, 0.0000

Same Dimension

The Same Dimension uses a secret algorithm to generate beautiful new colors.



214.7880, -11.7275, 28.2499



215.4360, -14.5119, 34.6976



230.6370, -19.5410, 14.3504



115.3490, -2.6371, 5.8329



79.0940, -38.9933, 93.7566



25.2720, -12.4591, 29.5795

Inverse Universe

The Inverse Universe completely reimagines the original color for something new.



223.2120, 11.7275, -28.2499



225.5640, 14.5119, -34.6976



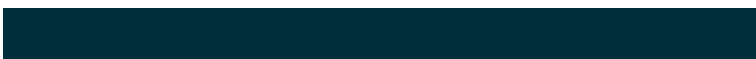
207.3630, 19.5410, -14.3504



117.2380, 2.3477, -6.3477



106.9060, 38.9933, -93.7566



33.7280, 12.4591, -29.5795

Previews

White Background



This preview shows how the YUV color 214.7880, -11.7275, 28.2499 looks on a white background.

Color Contrast Check

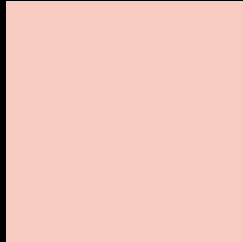
Large Text (above 18pt) WCAG AA × Fail

Any Text WCAG AA × Fail

Large Text (above 18pt) WCAG AAA × Fail

Any Text WCAG AAA × Fail

Black Background



This preview shows how the YUV color 214.7880, -11.7275, 28.2499 looks on a black background.

Color Contrast Check

Large Text (above 18pt) WCAG AA ✓ Pass

Any Text WCAG AA ✓ Pass

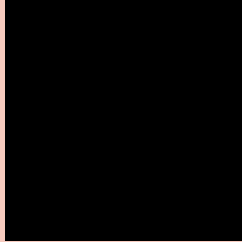
Large Text (above 18pt) WCAG AAA ✓ Pass

Any Text WCAG AAA ✓ Pass

If you want to check with other color combinations, try the [Color Contrast Checker](#).

YUV 214.7880, -11.7275, 28.2499

Background



This preview shows how black text looks on a background with the YUV color 214.7880, -11.7275, 28.2499.



This preview shows how white text looks on a background with the YUV color 214.7880, -11.7275, 28.2499.

Color Blindness Simulation

Color vision deficiency is a very complex topic, and I could not describe the different causes any better than Wikipedia does, so if you want to learn more, you should check out their [article about color blindness](#).

Dichromacy



Original Color

214.7880, -11.7275, 28.2499

Protanopia

212.8670, -8.3154, 7.1326

Deuteranopia

214.4670, -11.5692, 24.1464



Tritanopia

216.0730, -0.5290, 29.7540

Trichromacy



Original Color

214.7880, -11.7275, 28.2499

Protanomaly

213.5690, -9.6475, 14.4100

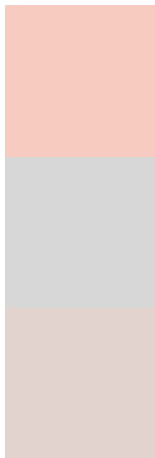
Deuteranomaly

214.4780, -11.5747, 25.8908

Tritanomaly

215.3350, -4.6022, 29.5242

Monochromacy



Original Color

214.7880, -11.7275, 28.2499

Achromatopsia

215.0000, 0.0000, 0.0000

Achromatomaly

215.2140, -4.5425, 10.3363

CSS Examples

Text

The CSS property to change the color of the text to YUV 214.7880, -11.7275, 28.2499 is called "color". The color property can be set on classes, ids or directly on the HTML element.

This example shows how text in the color `rgb(247, 203, 191)` looks like.

```
.text, #text, p{  
    color:rgb(247, 203, 191)  
}
```

If you want to add a text shadow in that color use the text-shadow property, you can generate a text shadow directly with our [CSS Text Shadow Generator](#).

Here you see how black text with a 4 pixel rgb(247, 203, 191) colored shadow looks like.

```
.shadow{ text-shadow: 4px 4px 2px rgb(247, 203, 191) }
```

Border

The CSS property to change the border of an element to YUV 214.7880, -11.7275, 28.2499 is called "border".

The border property can be set on classes, ids or directly on the HTML element.

This example shows the color as border, it can be applied via the CSS property "border" or "border-color".

```
.border, #border, table{ border:4px solid rgb(247, 203, 191) }
```


If only the border color should be changed use the property `border-color`.

```
.border{ border-color:rgb(247, 203, 191) }
```

If you want to add a box shadow in that color use:

Here you see how a box with a 4 pixel `rgb(247, 203, 191)` colored shadow looks like.

```
.boxshadow{ -moz-box-shadow:4px 4px 4px 4px rgb(247, 203, 191); -webkit-box-shadow:4px 4px 4px 4px rgb(247, 203, 191); box-shadow:4px 4px 4px 4px rgb(247, 203, 191) }
```

Background

The CSS property to change the background color of an element to YUV 214.7880, -11.7275, 28.2499 is called "background". The background property can be set on classes, ids or directly on the HTML element.

```
.background, #background, body{  
background: rgb(247, 203, 191) }
```

If only the background color should be changed can be used:

```
.background{ background-color: rgb(247,  
203, 191) }
```

This example shows the color as background, it is applied via the CSS property "background".

To optimize and compress your CSS code, you can use our [online CSS compressor and optimizer](#) based on csstidy. If you want to create a linear or radial gradient as background or border, check our [CSS Gradient Generator](#).

Hey! You found this booklet interesting? Support Converting Colors with the new Membership Option!

The pro membership hides all ads, plus gives you double the colors in the color bucket, and more awesome pro features!

[Learn more, Memberships starting at \\$2.50/m!](#)

**Follow me
on Twitter!**

@ConvertingColor