

# Converting Colors

YUV(214.9820, -5.9071,  
28.0798)

Have a look what the booklet for  
YUV(214.9820, -5.9071, 28.0798)  
contains.

<b>YUV(214.9820, -5.9071, 28.0798)</b> .....	3
<b><i>Conversions</i></b> .....	4
<b><i>Details</i></b> .....	6
<b><i>Harmonies</i></b> .....	12
<b><i>Previews</i></b> .....	24
<b><i>Color Blindness Simulation</i></b> .....	28
<b><i>CSS Examples</i></b> .....	31

# Color

**YUV(214.9820, -5.9071,  
28.0798)**

# Conversions

## Conversions Part 1

Format	Color
Hex	F7C9CB
RGB	247, 201, 203
RGB Percent	97%, 79%, 80%
CMY	0.0314, 0.2118, 0.2039
CMYK	0.00, 0.19, 0.18, 0.03
HSL	357°, 74%, 88%
HSV	357°, 19%, 97%
XYZ	70.0239, 65.8592, 65.5214
YIQ	214.9820, 26.7740, 10.3740

# Conversions

## Conversions Part 2

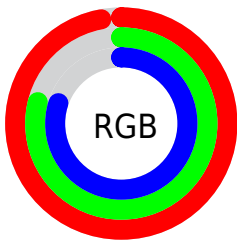
<b>Format</b>	<b>Color</b>
R <sub>Y</sub> B	247, 201, 203
Decimal	16239051
CIE Lab	84.92, 16.57, 5.16
CIE LCh	85, 17.349, 17.291
Yxy	65.8592, 0.3477, 0.3270
Android (android.graphics.Color)	4294429131 (0xFFFF7C9CB)
YUV	214.9820, -5.9071, 28.0798
Hunter-Lab	81.1537, 12.0007, 8.9384

# Details

The YUV color  $214.9820, -5.9071, 28.0798$  is a light color, and the websafe version is hex `FFCCCC`. A complement of this color would be  $233.0180, 5.9071, -28.0798$ , and the grayscale version is  $215.0000, 0.0000, 0.0000$ .

A 20% lighter version of the original color is  $255.0000, 0.0000, 0.0000$ , and  $160.0850, -5.4649, 26.2355$  is the 20% darker color. If you saturate the color by 10%, you get  $197.5710, -9.1555, 43.3492$ , and if you desaturate by 10%, it is  $232.3930, -2.6587, 12.8103$ .

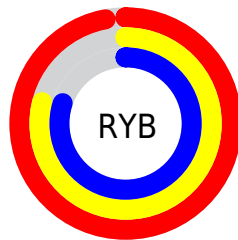
# Distribution



Red (97%)

Green (79%)

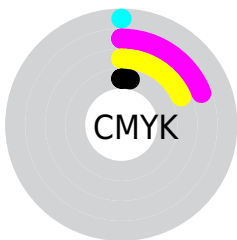
Blue (80%)



Red (97%)

Yellow (79%)

Blue (80%)

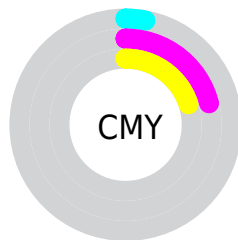


Cyan (0%)

Magenta (19%)

Yellow (18%)

Black (3%)



Cyan (3%)

Magenta (21%)

Yellow (20%)

# Brightness & Saturation Gradients

These gradients show how the YUV color 214.9820, -5.9071, 28.0798 changes by changing the brightness by 10 percent. The first figure shows a shift by +10% for each color and the second figure -10%.

Similar to the brightness gradients but the following saturation gradients show a change of the YUV color 214.9820, -5.9071, 28.0798 by changing the saturation by 10% instead.



214.9820, -5.9071,  
28.0798

214.9820, -5.9071,  
28.0798

255.0000, 0.0000,  
0.0000

187.3840, -5.6123,  
26.8502

160.0850, -5.4649,  
26.2355

133.7860, -5.3175,  
25.6207

108.1880, -5.0227,  
24.3911

83.7040, -4.2911,  
23.0616

60.1060, -3.9963,  
21.8320

38.2090, -3.5540,

19.9877

■ 14.6930, -4.2856,  
21.3172

■ 0.0000, 0.0000,  
0.0000

■ 214.9820, -5.9071,  
28.0798

■ 214.9820, -5.9071,  
28.0798

■ 197.5710, -9.1555,  
43.3492

■ 232.3930, -2.6587,  
12.8103

■ 180.8610,  
-12.2565, 58.0039

■ 249.1030, 0.4422,  
-1.8443

■ 163.4500,  
-15.5048, 73.2734

■ 252.6080, 1.1793,  
-4.9182

■ 146.0390,  
-18.7532, 88.5428

■ 128.7420,  
-21.5648, 103.7123

■ 111.9180,  
-25.1026, 118.4669

■ 94.6210, -27.9142,  
133.6364

■ 77.2100, -31.1625,  
148.9058

■ 75.1070, -31.6048,  
150.7502

# Harmonies

## Analogous

The Analogous color harmony consists of three colors that are next to each other on the color wheel.



215.1260, 2.4029, 22.6915



214.9820, -5.9071, 28.0798



214.2500, -12.4482, 26.0907

# Triad

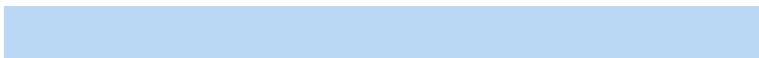
The Triadic color harmony groups three colors that are evenly spaced from another and form a triangle on the color wheel.



214.9820, -5.9071, 28.0798



208.8170, -9.2768, -11.2405



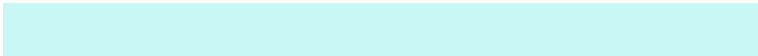
210.2220, 16.6526, -21.2427

# Complementary

The Complementary color scheme is a pair of colors which are on the opposite of each other on the color wheel.



214.9820, -5.9071, 28.0798



233.0180, 5.9071, -28.0798

# Split Complementary

Split-complementary colors differ from the complementary color scheme. The scheme consists of three colors, the original color and two neighbors of the complement color.



207.4720, 14.0643, -31.1089



214.9820, -5.9071, 28.0798



206.8030, -1.3819, -23.5062

# Square

The Square scheme is like the rectangle color scheme, but the four colors are evenly spaced on the color wheel.



214.9820, -5.9071, 28.0798



210.5370, -14.5617, 3.9141



206.3380, 7.2284, -31.8684



212.5660, 15.0040, -5.7584



# Rectangle

The Rectangle color scheme consists of four colors that form a rectangle on the color wheel.



214.9820, -5.9071, 28.0798



213.1200, -15.3422, 20.9428



206.3380, 7.2284, -31.8684



208.7870, 16.3740, -25.2462

# Sweetspot

The Sweet Spot groups the original color and five complimentary colors.



214.9820, -5.9071, 28.0798



244.4850, -2.2111, 9.2217



219.4000, 13.6068, 22.4512



121.6910, -1.3267, 5.5330



0.0000, 0.0000, 0.0000



128.0000, 0.0000, 0.0000



# Same Dimension

The Same Dimension uses a secret algorithm to generate beautiful new colors.



214.9820, -5.9071, 28.0798



215.9720, -7.3812, 34.2276



227.0810, -12.8579, 17.4690



113.7020, -1.3321, 7.2773



56.5260, -23.9233, 113.5487



17.9830, -7.3866, 35.9719



# Inverse Universe

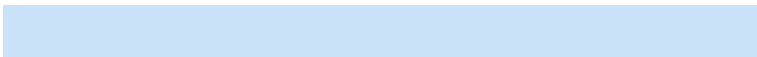
The Inverse Universe completely reimagines the original color for something new.



214.9820, -5.9071, 28.0798



215.9720, -7.3812, 34.2276



220.9190, 12.8579, -17.4690



113.7020, -1.3321, 7.2773



56.5260, -23.9233, 113.5487



17.9830, -7.3866, 35.9719



# Previews

## White Background



This preview shows how the YUV color 214.9820, -5.9071, 28.0798 looks on a white background.

## Color Contrast Check

Large Text (above 18pt) WCAG AA × Fail

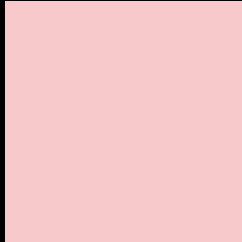
Any Text WCAG AA × Fail

Large Text (above 18pt) WCAG AAA × Fail

Any Text WCAG AAA × Fail



# Black Background



This preview shows how the YUV color 214.9820, -5.9071, 28.0798 looks on a black background.

## Color Contrast Check

Large Text (above 18pt) WCAG AA ✓ Pass

Any Text WCAG AA ✓ Pass

Large Text (above 18pt) WCAG AAA ✓ Pass

Any Text WCAG AAA ✓ Pass

If you want to check with other color combinations, try the [Color Contrast Checker](#).

# YUV 214.9820, -5.9071, 28.0798

## Background



This preview shows how black text looks on a background with the YUV color 214.9820, -5.9071, 28.0798.



This preview shows how white text looks on a background with the YUV color 214.9820, -5.9071,



# Color Blindness Simulation

Color vision deficiency is a very complex topic, and I could not describe the different causes any better than Wikipedia does, so if you want to learn more, you should check out their [article about color blindness](#).

## Dichromacy



### Original Color

214.9820, -5.9071, 28.0798

### Protanopia

212.5660, -1.7580, 3.8886

### Deuteranopia

214.2260, -6.0274, 19.9728



## Tritanopia

215.4750, -0.2342, 28.5244

# Trichromacy



## Original Color

214.9820, -5.9071, 28.0798

## Protanomaly

213.2790, -3.0955, 12.9103

## Deuteranomaly

214.8350, -6.3277, 22.9467

## Tritanomaly

215.6060, -2.2708, 28.4095

# Monochromacy



## Original Color

214.9820, -5.9071, 28.0798

## Achromatopsia

215.0000, 0.0000, 0.0000

## Achromatomaly

215.1970, -2.0691, 10.3512

# CSS Examples

## Text

The CSS property to change the color of the text to YUV 214.9820, -5.9071, 28.0798 is called "color". The color property can be set on classes, ids or directly on the HTML element.

This example shows how text in the color `rgb(247, 201, 203)` looks like.

```
.text, #text, p{  
    color:rgb(247, 201, 203)  
}
```

If you want to add a text shadow in that color use the text-shadow property, you can generate a text shadow directly with our [CSS Text Shadow Generator](#).

Here you see how black text with a 4 pixel rgb(247, 201, 203) colored shadow looks like.

```
.shadow{ text-shadow: 4px 4px 2px rgb(247, 201, 203) }
```

## Border

The CSS property to change the border of an element to YUV 214.9820, -5.9071, 28.0798 is called "border". The border property can be set on classes, ids or directly on the HTML element.

This example shows the color as border, it can be applied via the CSS property "border" or "border-color".

```
.border, #border, table{ border:4px solid rgb(247, 201, 203) }
```



If only the border color should be changed use the property `border-color`.

```
.border{ border-color:rgb(247, 201, 203) }
```

If you want to add a box shadow in that color use:

Here you see how a box with a 4 pixel `rgb(247, 201, 203)` colored shadow looks like.

```
.boxshadow{ -moz-box-shadow:4px 4px 4px  
4px rgb(247, 201, 203); -webkit-box-  
shadow:4px 4px 4px 4px rgb(247, 201, 203);  
box-shadow:4px 4px 4px 4px rgb(247, 201,  
203) }
```

# Background

The CSS property to change the background color of an element to YUV 214.9820, -5.9071, 28.0798 is called "background". The background property can be set on classes, ids or directly on the HTML element.

```
.background, #background, body{  
background: rgb(247, 201, 203) }
```

If only the background color should be changed can be used:

```
.background{ background-color: rgb(247,  
201, 203) }
```

This example shows the color as background, it is applied via the CSS property "background".

To optimize and compress your CSS code, you can use our [online CSS compressor and optimizer](#) based on csstidy. If you want to create a linear or radial gradient as background or border, check our [CSS Gradient Generator](#).

Hey! You found this booklet interesting? Support Converting Colors with the new Membership Option!

The pro membership hides all ads, plus gives you double the colors in the color bucket, and more awesome pro features!

**[Learn more, Memberships starting at \\$2.50/m!](#)**

**Follow me  
on Twitter!**

@ConvertingColor