

Converting Colors

YUV(215.9910, -2.9536,
14.0399)

Have a look what the booklet for
YUV(215.9910, -2.9536, 14.0399)
contains.

YUV(215.9910, -2.9536, 14.0399)	3
<i>Conversions</i>	4
<i>Details</i>	6
<i>Harmonies</i>	12
<i>Previews</i>	24
<i>Color Blindness Simulation</i>	28
<i>CSS Examples</i>	31

Color

**YUV(215.9910, -2.9536,
14.0399)**

Conversions

Conversions Part 1

Format	Color
Hex	E8D1D2
RGB	232, 209, 210
RGB Percent	91%, 82%, 82%
CMY	0.0902, 0.1804, 0.1765
CMYK	0.00, 0.10, 0.09, 0.09
HSL	357°, 33%, 86%
HSV	357°, 10%, 91%
XYZ	67.7120, 67.4099, 70.4154
YIQ	215.9910, 13.3870, 5.1870

Conversions

Conversions Part 2

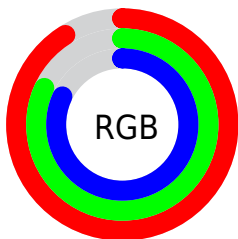
Format	Color
R _Y B	232, 209, 210
Decimal	15258066
CIE Lab	85.71, 8.15, 2.41
CIE LCh	86, 8.500, 16.458
Yxy	67.4099, 0.3294, 0.3280
Android (android.graphics.Color)	4293448146 (0xFFE8D1D2)
YUV	215.9910, -2.9536, 14.0399
Hunter-Lab	82.1035, 3.5305, 6.6229

Details

The YUV color $215.9910, -2.9536, 14.0399$ is a light color, and the websafe version is hex `CCCCCC`. A complement of this color would be $225.0090, 2.9536, -14.0399$, and the grayscale version is $216.0000, 0.0000, 0.0000$.

A 20% lighter version of the original color is $255.0000, 0.0000, 0.0000$, and $161.3930, -2.6587, 12.8103$ is the 20% darker color. If you saturate the color by 10%, you get $199.9820, -5.9071, 28.0798$, and if you desaturate by 10%, it is $232.0000, 0.0000, 0.0000$.

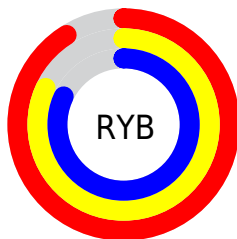
Distribution



Red (91%)

Green (82%)

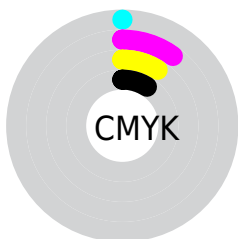
Blue (82%)



Red (91%)

Yellow (82%)

Blue (82%)

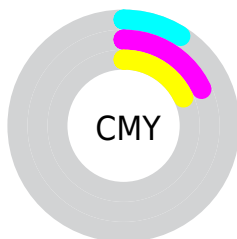


Cyan (0%)

Magenta (10%)

Yellow (9%)

Black (9%)



Cyan (9%)

Magenta (18%)

Yellow (18%)

Brightness & Saturation Gradients

These gradients show how the YUV color 215.9910, -2.9536, 14.0399 changes by changing the brightness by 10 percent. The first figure shows a shift by +10% for each color and the second figure -10%.

Similar to the brightness gradients but the following saturation gradients show a change of the YUV color 215.9910, -2.9536, 14.0399 by changing the saturation by 10% instead.

■ 215.9910, -2.9536,
14.0399

■ 215.9910, -2.9536,
14.0399

255.0000, 0.0000,
0.0000

■ 187.9910, -2.9536,
14.0399

■ 161.3930, -2.6587,
12.8103

■ 135.0940, -2.5113,
12.1956

■ 109.3930, -2.6587,
12.8103

■ 84.7950, -2.3639,
11.5808

■ 61.6100, -1.7797,
10.8660

■ 40.1970, -2.0691,

10.3512

■ 19.1970, -2.0691,
10.3512

■ 0.0000, 0.0000,
0.0000

■ 215.9910, -2.9536,
14.0399

■ 215.9910, -2.9536,
14.0399

■ 199.9820, -5.9071,
28.0798

■ 232.0000, 0.0000,
0.0000

■ 183.9730, -8.8607,
42.1197

■ 248.0090, 2.9536,
-14.0399

■ 167.2630,
-11.9617, 56.7743

■ 248.1230, 3.3904,
-14.1399

■ 151.2540,
-14.9152, 70.8142

■ 135.2450,
-17.8688, 84.8541

■ 119.2360,
-20.8223, 98.8940

■ 103.2270,
-23.7759, 112.9339

■ 86.5170, -26.8769,
127.5886

■ 70.5080, -29.8304,
141.6285

Harmonies

Analogous

The Analogous color harmony consists of three colors that are next to each other on the color wheel.



216.0060, 0.9830, 11.3957



215.9910, -2.9536, 14.0399



215.4810, -6.1531, 13.6102

Triad

The Triadic color harmony groups three colors that are evenly spaced from another and form a triangle on the color wheel.



215.9910, -2.9536, 14.0399



212.4140, -4.6411, -4.7481



213.4100, 8.1789, -10.0066

Complementary

The Complementary color scheme is a pair of colors which are on the opposite of each other on the color wheel.



215.9910, -2.9536, 14.0399



225.0090, 2.9536, -14.0399

Split Complementary

Split-complementary colors differ from the complementary color scheme. The scheme consists of three colors, the original color and two neighbors of the complement color.



212.3340, 6.7373, -14.3249



215.9910, -2.9536, 14.0399



211.9940, -0.9830, -11.3957

Square

The Square scheme is like the rectangle color scheme, but the four colors are evenly spaced on the color wheel.



215.9910, -2.9536, 14.0399



213.4750, -7.1362, 2.2144



211.7100, 3.1010, -14.6547



214.6390, 7.5730, -2.3144

Rectangle

The Rectangle color scheme consists of four colors that form a rectangle on the color wheel.



215.9910, -2.9536, 14.0399



215.1170, -7.4527, 10.4214



211.7100, 3.1010, -14.6547



213.2850, 7.7475, -11.6509

Sweetspot

The Sweet Spot groups the original color and five complimentary colors.



215.9910, -2.9536, 14.0399



249.5060, -0.7425, 4.8182



218.2000, 6.8034, 11.2256



123.9080, -0.4476, 3.5887



0.0000, 0.0000, 0.0000



128.0000, 0.0000, 0.0000

Same Dimension

The Same Dimension uses a secret algorithm to generate beautiful new colors.



215.9910, -2.9536, 14.0399



233.4970, -3.6960, 18.8581



221.7470, -6.2843, 8.9919



106.7020, -1.3321, 7.2773



54.4330, -22.8915, 109.2453



15.4770, -6.6442, 31.1537

Inverse Universe

The Inverse Universe completely reimagines the original color for something new.



215.9910, -2.9536, 14.0399



233.4970, -3.6960, 18.8581



219.2530, 6.2843, -8.9919



106.7020, -1.3321, 7.2773



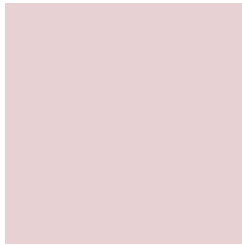
54.4330, -22.8915, 109.2453



15.4770, -6.6442, 31.1537

Previews

White Background



This preview shows how the YUV color 215.9910, -2.9536, 14.0399 looks on a white background.

Color Contrast Check

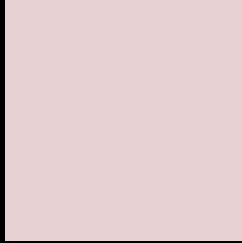
Large Text (above 18pt) WCAG AA × Fail

Any Text WCAG AA × Fail

Large Text (above 18pt) WCAG AAA × Fail

Any Text WCAG AAA × Fail

Black Background



This preview shows how the YUV color 215.9910, -2.9536, 14.0399 looks on a black background.

Color Contrast Check

Large Text (above 18pt) WCAG AA ✓ Pass

Any Text WCAG AA ✓ Pass

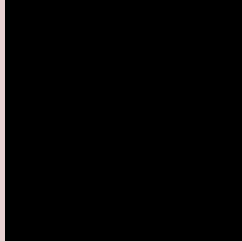
Large Text (above 18pt) WCAG AAA ✓ Pass

Any Text WCAG AAA ✓ Pass

If you want to check with other color combinations, try the [Color Contrast Checker](#).

YUV 215.9910, -2.9536, 14.0399

Background



This preview shows how black text looks on a background with the YUV color 215.9910, -2.9536, 14.0399.



This preview shows how white text looks on a background with the YUV color 215.9910, -2.9536,

Color Blindness Simulation

Color vision deficiency is a very complex topic, and I could not describe the different causes any better than Wikipedia does, so if you want to learn more, you should check out their [article about color blindness](#).

Dichromacy



Original Color

215.9910, -2.9536, 14.0399

Protanopia

214.3810, -1.1738, 3.1739

Deuteranopia

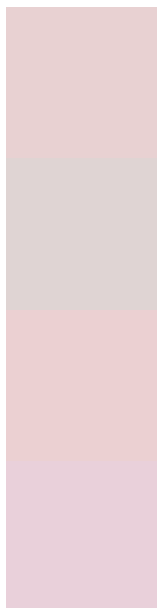
216.0130, -2.9644, 17.5286



Tritanopia

216.8970, 3.0088, 14.9993

Trichromacy



Original Color

215.9910, -2.9536, 14.0399

Protanomaly

215.1750, -2.0583, 6.8625

Deuteranomaly

216.3010, -3.1064, 16.3990

Tritanomaly

216.6150, 0.6828, 14.3696

Monochromacy



Original Color

215.9910, -2.9536, 14.0399

Achromatopsia

216.0000, 0.0000, 0.0000

Achromatomaly

215.8050, -0.8899, 5.4330

CSS Examples

Text

The CSS property to change the color of the text to YUV 215.9910, -2.9536, 14.0399 is called "color". The color property can be set on classes, ids or directly on the HTML element.

This example shows how text in the color `rgb(232, 209, 210)` looks like.

```
.text, #text, p{  
    color:rgb(232, 209, 210)  
}
```

If you want to add a text shadow in that color use the text-shadow property, you can generate a text shadow directly with our [CSS Text Shadow Generator](#).

Here you see how black text with a 4 pixel rgb(232, 209, 210) colored shadow looks like.

```
.shadow{ text-shadow: 4px 4px 2px rgb(232, 209, 210) }
```

Border

The CSS property to change the border of an element to YUV 215.9910, -2.9536, 14.0399 is called "border". The border property can be set on classes, ids or directly on the HTML element.

This example shows the color as border, it can be applied via the CSS property "border" or "border-color".

```
.border, #border, table{ border:4px solid rgb(232, 209, 210) }
```


If only the border color should be changed use the property `border-color`.

```
.border{ border-color:rgb(232, 209, 210) }
```

If you want to add a box shadow in that color use:

Here you see how a box with a 4 pixel `rgb(232, 209, 210)` colored shadow looks like.

```
.boxshadow{ -moz-box-shadow:4px 4px 4px  
4px rgb(232, 209, 210); -webkit-box-  
shadow:4px 4px 4px 4px rgb(232, 209, 210);  
box-shadow:4px 4px 4px 4px rgb(232, 209,  
210) }
```

Background

The CSS property to change the background color of an element to YUV 215.9910, -2.9536, 14.0399 is called "background". The background property can be set on classes, ids or directly on the HTML element.

```
.background, #background, body{  
background: rgb(232, 209, 210) }
```

If only the background color should be changed can be used:

```
.background{ background-color: rgb(232,  
209, 210) }
```

This example shows the color as background, it is applied via the CSS property "background".

To optimize and compress your CSS code, you can use our [online CSS compressor and optimizer](#) based on csstidy. If you want to create a linear or radial gradient as background or border, check our [CSS Gradient Generator](#).

Hey! You found this booklet interesting? Support Converting Colors with the new Membership Option!

The pro membership hides all ads, plus gives you double the colors in the color bucket, and more awesome pro features!

[Learn more, Memberships starting at \\$2.50/m!](#)

**Follow me
on Twitter!**

@ConvertingColor