

Converting Colors

YUV(216.2410, -2.0908,
17.3286)

Have a look what the booklet for
YUV(216.2410, -2.0908, 17.3286)
contains.

YUV(216.2410, -2.0908, 17.3286)	3
<i>Conversions</i>	4
<i>Details</i>	6
<i>Harmonies</i>	12
<i>Previews</i>	24
<i>Color Blindness Simulation</i>	28
<i>CSS Examples</i>	31

Color

**YUV(216.2410, -2.0908,
17.3286)**

Conversions

Conversions Part 1

Format	Color
Hex	ECCFD4
RGB	236, 207, 212
RGB Percent	93%, 81%, 83%
CMY	0.0745, 0.1882, 0.1686
CMYK	0.00, 0.12, 0.10, 0.07
HSL	350°, 43%, 87%
HSV	350°, 12%, 93%
XYZ	68.7886, 67.2120, 71.6350
YIQ	216.2410, 15.6790, 7.7030

Conversions

Conversions Part 2

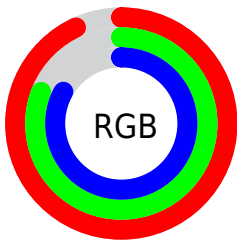
Format	Color
R _Y B	236, 207, 212
Decimal	15519700
CIE Lab	85.61, 10.94, 1.24
CIE LCh	86, 11.006, 6.488
Yxy	67.2120, 0.3313, 0.3237
Android (android.graphics.Color)	4293709780 (0xFFECCFD4)
YUV	216.2410, -2.0908, 17.3286
Hunter-Lab	81.9829, 6.3021, 5.5816

Details

The YUV color $216.2410, -2.0908, 17.3286$ is a light color, and the websafe version is hex FFCCCC . A complement of this color would be $226.7590, 2.0908, -17.3286$, and the grayscale version is $216.0000, 0.0000, 0.0000$.

A 20% lighter version of the original color is $255.0000, 0.0000, 0.0000$, and $161.5290, -2.2328, 16.1991$ is the 20% darker color. If you saturate the color by 10%, you get $199.8730, -3.8814, 31.6834$, and if you desaturate by 10%, it is $232.6090, -0.3002, 2.9739$.

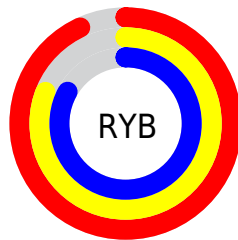
Distribution



Red (93%)

Green (81%)

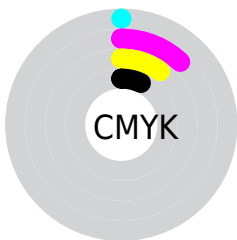
Blue (83%)



Red (93%)

Yellow (81%)

Blue (83%)

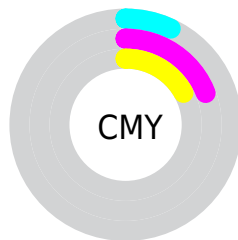


Cyan (0%)

Magenta (12%)

Yellow (10%)

Black (7%)



Cyan (7%)

Magenta (19%)

Yellow (17%)

Brightness & Saturation Gradients

These gradients show how the YUV color 216.2410, -2.0908, 17.3286 changes by changing the brightness by 10 percent. The first figure shows a shift by +10% for each color and the second figure -10%.

Similar to the brightness gradients but the following saturation gradients show a change of the YUV color 216.2410, -2.0908, 17.3286 by changing the saturation by 10% instead.

■ 216.2410, -2.0908,
17.3286

■ 216.2410, -2.0908,
17.3286

255.0000, 0.0000,
0.0000

■ 188.2410, -2.0908,
17.3286

■ 161.5290, -2.2328,
16.1991

■ 135.2300, -2.0854,
15.5843

■ 109.9310, -1.9380,
14.9695

■ 85.6320, -1.7906,
14.3547

■ 62.0340, -1.4958,
13.1252

■ 39.8490, -0.9116,

12.4104

■ 18.8490, -0.9116,
12.4104

■ 0.0000, 0.0000,
0.0000

■ 216.2410, -2.0908,
17.3286

■ 216.2410, -2.0908,
17.3286

■ 199.8730, -3.8814,
31.6834

■ 232.6090, -0.3002,
2.9739

■ 184.2060, -5.5246,
45.4233

■ 248.2760, 1.3429,
-10.7661

■ 167.8380, -7.3151,
59.7781

■ 249.3190, 2.8007,
-11.6808

■ 152.1710, -8.9583,
73.5180

■ 135.8030,
-10.7489, 87.8728

■ 119.5490,
-12.1027, 102.1275

■ 103.7680,
-14.1826, 115.9675

■ 87.5140, -15.5364,
130.2222

■ 75.2380, -16.8793,
140.9883

Harmonies

Analogous

The Analogous color harmony consists of three colors that are next to each other on the color wheel.



216.1740, 2.8722, 12.1254



216.2410, -2.0908, 17.3286



215.6880, -6.7482, 17.8136

Triad

The Triadic color harmony groups three colors that are evenly spaced from another and form a triangle on the color wheel.



216.2410, -2.0908, 17.3286



212.0290, -7.4093, -3.5334



212.2460, 10.2317, -15.1247

Complementary

The Complementary color scheme is a pair of colors which are on the opposite of each other on the color wheel.



216.2410, -2.0908, 17.3286



226.7590, 2.0908, -17.3286

Split Complementary

Split-complementary colors differ from the complementary color scheme. The scheme consists of three colors, the original color and two neighbors of the complement color.



211.4150, 7.1904, -19.6580



216.2410, -2.0908, 17.3286



210.8260, -2.8722, -12.1254

Square

The Square scheme is like the rectangle color scheme, but the four colors are evenly spaced on the color wheel.



216.2410, -2.0908, 17.3286



213.4000, -10.0572, 5.7882



210.5740, 2.6750, -18.0434



213.8880, 9.9152, -6.9178

Rectangle

The Rectangle color scheme consists of four colors that form a rectangle on the color wheel.



216.2410, -2.0908, 17.3286



215.3950, -9.0687, 15.4396



210.5740, 2.6750, -18.0434



211.7080, 9.5110, -17.2839

Sweetspot

The Sweet Spot groups the original color and five complimentary colors.



216.2410, -2.0908, 17.3286



248.2180, -0.6005, 5.9478



217.4820, 9.1294, 11.8553



123.2070, -0.5951, 4.2035



0.0000, 0.0000, 0.0000



128.0000, 0.0000, 0.0000

Same Dimension

The Same Dimension uses a secret algorithm to generate beautiful new colors.



216.2410, -2.0908, 17.3286



229.0460, -2.9807, 22.7617



220.9540, -6.8793, 13.1953



109.5170, -0.7479, 6.5626



57.6530, -13.1399, 108.1753



17.1720, -4.0288, 32.2982

Inverse Universe

The Inverse Universe completely reimagines the original color for something new.



216.2410, -2.0908, 17.3286



229.0460, -2.9807, 22.7617



222.0460, 6.8793, -13.1953



109.5170, -0.7479, 6.5626



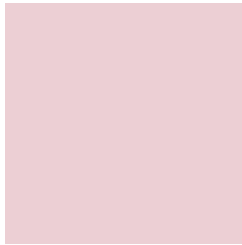
57.6530, -13.1399, 108.1753



17.1720, -4.0288, 32.2982

Previews

White Background



This preview shows how the YUV color 216.2410, -2.0908, 17.3286 looks on a white background.

Color Contrast Check

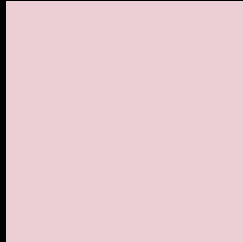
Large Text (above 18pt) WCAG AA × Fail

Any Text WCAG AA × Fail

Large Text (above 18pt) WCAG AAA × Fail

Any Text WCAG AAA × Fail

Black Background



This preview shows how the YUV color 216.2410, -2.0908, 17.3286 looks on a black background.

Color Contrast Check

Large Text (above 18pt) WCAG AA ✓ Pass

Any Text WCAG AA ✓ Pass

Large Text (above 18pt) WCAG AAA ✓ Pass

Any Text WCAG AAA ✓ Pass

If you want to check with other color combinations, try the [Color Contrast Checker](#).

YUV 216.2410, -2.0908, 17.3286

Background



This preview shows how black text looks on a background with the YUV color 216.2410, -2.0908, 17.3286.



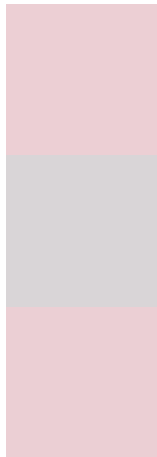
This preview shows how white text looks on a background with the YUV color 216.2410, -2.0908,

17.3286.

Color Blindness Simulation

Color vision deficiency is a very complex topic, and I could not describe the different causes any better than Wikipedia does, so if you want to learn more, you should check out their [article about color blindness](#).

Dichromacy



Original Color

216.2410, -2.0908, 17.3286

Protanopia

214.4240, 0.2840, 2.2592

Deuteranopia

215.9420, -1.9434, 16.7139



Tritanopia

216.5060, 2.7085, 17.9732

Trichromacy



Original Color

216.2410, -2.0908, 17.3286

Protanomaly

215.2290, -0.6059, 7.6922

Deuteranomaly

215.9420, -1.9434, 16.7139

Tritanomaly

216.6370, 0.6720, 17.8584

Monochromacy



Original Color

216.2410, -2.0908, 17.3286

Achromatopsia

216.0000, 0.0000, 0.0000

Achromatomaly

216.2180, -0.6005, 5.9478

CSS Examples

Text

The CSS property to change the color of the text to YUV 216.2410, -2.0908, 17.3286 is called "color". The color property can be set on classes, ids or directly on the HTML element.

This example shows how text in the color `rgb(236, 207, 212)` looks like.

```
.text, #text, p{  
    color:rgb(236, 207, 212)  
}
```

If you want to add a text shadow in that color use the text-shadow property, you can generate a text shadow directly with our [CSS Text Shadow Generator](#).

Here you see how black text with a 4 pixel rgb(236, 207, 212) colored shadow looks like.

```
.shadow{ text-shadow: 4px 4px 2px rgb(236, 207, 212) }
```

Border

The CSS property to change the border of an element to YUV 216.2410, -2.0908, 17.3286 is called "border". The border property can be set on classes, ids or directly on the HTML element.

This example shows the color as border, it can be applied via the CSS property "border" or "border-color".

```
.border, #border, table{ border:4px solid rgb(236, 207, 212) }
```


If only the border color should be changed use the property `border-color`.

```
.border{ border-color:rgb(236, 207, 212) }
```

If you want to add a box shadow in that color use:

Here you see how a box with a 4 pixel `rgb(236, 207, 212)` colored shadow looks like.

```
.boxshadow{ -moz-box-shadow:4px 4px 4px  
4px rgb(236, 207, 212); -webkit-box-  
shadow:4px 4px 4px 4px rgb(236, 207, 212);  
box-shadow:4px 4px 4px 4px rgb(236, 207,  
212) }
```

Background

The CSS property to change the background color of an element to YUV 216.2410, -2.0908, 17.3286 is called "background". The background property can be set on classes, ids or directly on the HTML element.

```
.background, #background, body{  
background: rgb(236, 207, 212) }
```

If only the background color should be changed can be used:

```
.background{ background-color: rgb(236,  
207, 212) }
```

This example shows the color as background, it is applied via the CSS property "background".

To optimize and compress your CSS code, you can use our [online CSS compressor and optimizer](#) based on csstidy. If you want to create a linear or radial gradient as background or border, check our [CSS Gradient Generator](#).

Hey! You found this booklet interesting? Support Converting Colors with the new Membership Option!

The pro membership hides all ads, plus gives you double the colors in the color bucket, and more awesome pro features!

[Learn more, Memberships starting at \\$2.50/m!](#)

**Follow me
on Twitter!**

@ConvertingColor