

Converting Colors

YUV(216.3670, -6.5899,
13.7101)

Have a look what the booklet for
YUV(216.3670, -6.5899, 13.7101)
contains.

YUV(216.3670, -6.5899, 13.7101)	3
<i>Conversions</i>	4
<i>Details</i>	6
<i>Harmonies</i>	12
<i>Previews</i>	24
<i>Color Blindness Simulation</i>	28
<i>CSS Examples</i>	31

Color

**YUV(216.3670, -6.5899,
13.7101)**

Conversions

Conversions Part 1

Format	Color
Hex	E8D3CB
RGB	232, 211, 203
RGB Percent	91%, 83%, 80%
CMY	0.0902, 0.1725, 0.2039
CMYK	0.00, 0.09, 0.13, 0.09
HSL	17°, 39%, 85%
HSV	17°, 13%, 91%
XYZ	67.3525, 68.0561, 66.0862
YIQ	216.3670, 15.0840, 1.9640

Conversions

Conversions Part 2

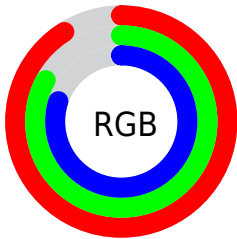
Format	Color
R _Y B	232, 214, 203
Decimal	15258571
CIE Lab	86.03, 5.96, 6.59
CIE LCh	86, 8.885, 47.842
Yxy	68.0561, 0.3343, 0.3378
Android (android.graphics.Color)	4293448651 (0xFFE8D3CB)
YUV	216.3670, -6.5899, 13.7101
Hunter-Lab	82.4961, 1.3648, 10.2511

Details

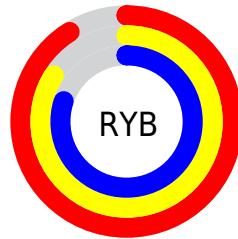
The YUV color $216.3670, -6.5899, 13.7101$ is a light color, and the websafe version is hex `CCCCCC`. A complement of this color would be $218.6330, 6.5899, -13.7101$, and the grayscale version is $216.0000, 0.0000, 0.0000$.

A 20% lighter version of the original color is $255.0000, 0.0000, 0.0000$, and $161.7690, -6.2951, 12.4806$ is the 20% darker color. If you saturate the color by 10%, you get $203.7660, -11.7166, 24.7612$, and if you desaturate by 10%, it is $228.9680, -1.4632, 2.6591$.

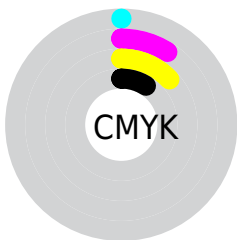
Distribution



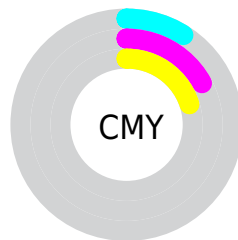
- Red (91%)
- Green (83%)
- Blue (80%)



- Red (91%)
- Yellow (84%)
- Blue (80%)



- Cyan (0%)
- Magenta (9%)
- Yellow (13%)
- Black (9%)



- Cyan (9%)
- Magenta (17%)
- Yellow (20%)

Brightness & Saturation Gradients

These gradients show how the YUV color 216.3670, -6.5899, 13.7101 changes by changing the brightness by 10 percent. The first figure shows a shift by +10% for each color and the second figure -10%.

Similar to the brightness gradients but the following saturation gradients show a change of the YUV color 216.3670, -6.5899, 13.7101 by changing the saturation by 10% instead.

■ 216.3670, -6.5899,
13.7101

■ 216.3670, -6.5899,
13.7101

255.0000, 0.0000,
0.0000

■ 188.4810, -6.1531,
13.6102

■ 161.7690, -6.2951,
12.4806

■ 134.8830, -5.8583,
12.3806

■ 109.5840, -5.7109,
11.7658

■ 85.2850, -5.5635,
11.1511

■ 62.1000, -4.9793,
10.4363

■ 40.5020, -4.6845,

9.2067

■ 19.3450, -6.5791,
10.2214

■ 0.0000, 0.0000,
0.0000

■ 216.3670, -6.5899,
13.7101

■ 216.3670, -6.5899,
13.7101

■ 203.7660,
-11.7166, 24.7612

■ 228.9680, -1.4632,
2.6591

■ 191.1650,
-16.8433, 35.8123

■ 241.5690, 3.6635,
-8.3920

■ 179.0370,
-22.6962, 46.4486

■ 248.1230, 3.3904,
-14.1399

■ 166.4360,
-27.8229, 57.4996

■ 153.8350,
-32.9497, 68.5507

■ 141.2340,
-38.0764, 79.6018

■ 128.6330,
-43.2031, 90.6529

■ 116.5050,
-49.0560, 101.2891

■ 106.9360,
-52.7194, 109.6811

Harmonies

Analogous

The Analogous color harmony consists of three colors that are next to each other on the color wheel.



217.1760, -3.5378, 14.7546



216.3670, -6.5899, 13.7101



215.2910, -8.0315, 9.3918

Triad

The Triadic color harmony groups three colors that are evenly spaced from another and form a triangle on the color wheel.



216.3670, -6.5899, 13.7101



212.6950, -0.8356, -12.0105



215.6390, 7.5730, -2.3144

Complementary

The Complementary color scheme is a pair of colors which are on the opposite of each other on the color wheel.



216.3670, -6.5899, 13.7101



218.6330, 6.5899, -13.7101

Split Complementary

Split-complementary colors differ from the complementary color scheme. The scheme consists of three colors, the original color and two neighbors of the complement color.



214.4100, 8.1789, -10.0066



216.3670, -6.5899, 13.7101



212.5250, 3.6852, -15.3694

Square

The Square scheme is like the rectangle color scheme, but the four colors are evenly spaced on the color wheel.



216.3670, -6.5899, 13.7101



213.7020, -4.7831, -5.8777



213.0350, 6.8847, -14.9397



216.9990, 4.9305, 5.2629

Rectangle

The Rectangle color scheme consists of four colors that form a rectangle on the color wheel.



216.3670, -6.5899, 13.7101



214.6710, -7.7258, 4.6735



213.0350, 6.8847, -14.9397



215.1440, 8.3100, -5.3883

Sweetspot

The Sweet Spot groups the original color and five complimentary colors.



216.3670, -6.5899, 13.7101



249.7510, -2.3422, 4.6034



214.0650, 4.8980, 15.7290



124.2670, -1.6106, 3.2738



0.0000, 0.0000, 0.0000



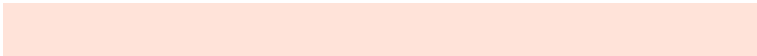
128.0000, 0.0000, 0.0000

Same Dimension

The Same Dimension uses a secret algorithm to generate beautiful new colors.



216.3670, -6.5899, 13.7101



234.2320, -8.4954, 18.2135



224.5850, -10.6414, 6.5030



108.3490, -2.6371, 5.8329



82.2840, -40.5660, 84.8199



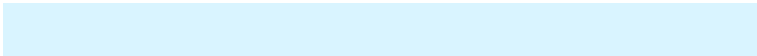
23.4670, -11.5692, 24.1464

Inverse Universe

The Inverse Universe completely reimagines the original color for something new.



218.6330, 6.5899, -13.7101



237.1810, 8.7848, -17.6987



210.4150, 10.6414, -6.5030



109.6510, 2.6371, -5.8329



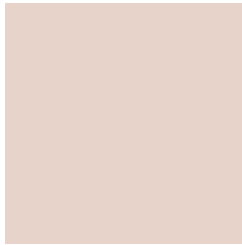
96.1290, 40.8554, -84.3051



27.5330, 11.5692, -24.1464

Previews

White Background



This preview shows how the YUV color 216.3670, -6.5899, 13.7101 looks on a white background.

Color Contrast Check

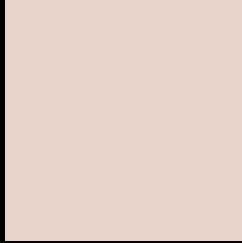
Large Text (above 18pt) WCAG AA × Fail

Any Text WCAG AA × Fail

Large Text (above 18pt) WCAG AAA × Fail

Any Text WCAG AAA × Fail

Black Background



This preview shows how the YUV color 216.3670, -6.5899, 13.7101 looks on a black background.

Color Contrast Check

Large Text (above 18pt) WCAG AA ✓ Pass

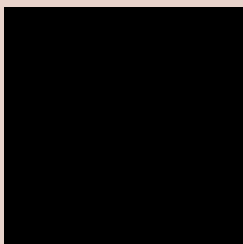
Any Text WCAG AA ✓ Pass

Large Text (above 18pt) WCAG AAA ✓ Pass

Any Text WCAG AAA ✓ Pass

If you want to check with other color combinations, try the [Color Contrast Checker](#).

YUV 216.3670, -6.5899, 13.7101 Background



This preview shows how black text looks on a background with the YUV color 216.3670, -6.5899, 13.7101.



This preview shows how white text looks on a background with the YUV color 216.3670, -6.5899,

Color Blindness Simulation

Color vision deficiency is a very complex topic, and I could not describe the different causes any better than Wikipedia does, so if you want to learn more, you should check out their [article about color blindness](#).

Dichromacy



Original Color

216.3670, -6.5899, 13.7101

Protanopia

215.3660, -5.1104, 5.8180

Deuteranopia

217.1120, -6.4642, 20.0728



Tritanopia

217.8970, 3.0088, 14.9993

Trichromacy



Original Color

216.3670, -6.5899, 13.7101

Protanomaly

215.8610, -5.8475, 8.8919

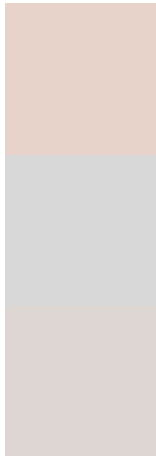
Deuteranomaly

216.8020, -6.3114, 17.7136

Tritanomaly

217.2730, -0.6276, 14.6696

Monochromacy



Original Color

216.3670, -6.5899, 13.7101

Achromatopsia

216.0000, 0.0000, 0.0000

Achromatomaly

216.0500, -2.4896, 5.2182

CSS Examples

Text

The CSS property to change the color of the text to YUV 216.3670, -6.5899, 13.7101 is called "color". The color property can be set on classes, ids or directly on the HTML element.

This example shows how text in the color `rgb(232, 211, 203)` looks like.

```
.text, #text, p{  
    color:rgb(232, 211, 203)  
}
```

If you want to add a text shadow in that color use the text-shadow property, you can generate a text shadow directly with our [CSS Text Shadow Generator](#).

Here you see how black text with a 4 pixel rgb(232, 211, 203) colored shadow looks like.

```
.shadow{ text-shadow: 4px 4px 2px rgb(232, 211, 203) }
```

Border

The CSS property to change the border of an element to YUV 216.3670, -6.5899, 13.7101 is called "border". The border property can be set on classes, ids or directly on the HTML element.

This example shows the color as border, it can be applied via the CSS property "border" or "border-color".

```
.border, #border, table{ border:4px solid rgb(232, 211, 203) }
```


If only the border color should be changed use the property `border-color`.

```
.border{ border-color:rgb(232, 211, 203) }
```

If you want to add a box shadow in that color use:

Here you see how a box with a 4 pixel `rgb(232, 211, 203)` colored shadow looks like.

```
.boxshadow{ -moz-box-shadow:4px 4px 4px  
4px rgb(232, 211, 203); -webkit-box-  
shadow:4px 4px 4px 4px rgb(232, 211, 203);  
box-shadow:4px 4px 4px 4px rgb(232, 211,  
203) }
```

Background

The CSS property to change the background color of an element to YUV 216.3670, -6.5899, 13.7101 is called "background". The background property can be set on classes, ids or directly on the HTML element.

```
.background, #background, body{  
background: rgb(232, 211, 203) }
```

If only the background color should be changed can be used:

```
.background{ background-color: rgb(232,  
211, 203) }
```

This example shows the color as background, it is applied via the CSS property "background".

To optimize and compress your CSS code, you can use our [online CSS compressor and optimizer](#) based on csstidy. If you want to create a linear or radial gradient as background or border, check our [CSS Gradient Generator](#).

Hey! You found this booklet interesting? Support Converting Colors with the new Membership Option!

The pro membership hides all ads, plus gives you double the colors in the color bucket, and more awesome pro features!

[Learn more, Memberships starting at \\$2.50/m!](#)

**Follow me
on Twitter!**

@ConvertingColor