

Converting Colors

YUV(216.8190, -8.7848,
17.6987)

Have a look what the booklet for
YUV(216.8190, -8.7848, 17.6987)
contains.

YUV(216.8190, -8.7848, 17.6987)	3
<i>Conversions</i>	4
<i>Details</i>	6
<i>Harmonies</i>	12
<i>Previews</i>	24
<i>Color Blindness Simulation</i>	28
<i>CSS Examples</i>	31

Color

**YUV(216.8190, -8.7848,
17.6987)**

Conversions

Conversions Part 1

Format	Color
Hex	EDD2C7
RGB	237, 210, 199
RGB Percent	93%, 82%, 78%
CMY	0.0706, 0.1765, 0.2196
CMYK	0.00, 0.11, 0.16, 0.07
HSL	17°, 51%, 85%
HSV	17°, 16%, 93%
XYZ	68.2804, 68.2212, 63.6021
YIQ	216.8190, 19.6230, 2.3030

Conversions

Conversions Part 2

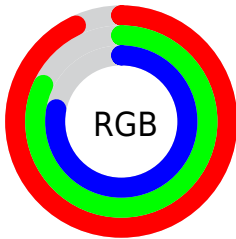
Format	Color
R _Y B	237, 214, 199
Decimal	15585991
CIE Lab	86.12, 7.65, 8.88
CIE LCh	86, 11.716, 49.262
Yxy	68.2212, 0.3412, 0.3409
Android (android.graphics.Color)	4293776071 (0xFFEDD2C7)
YUV	216.8190, -8.7848, 17.6987
Hunter-Lab	82.5961, 3.0188, 12.1618

Details

The YUV color $216.8190, -8.7848, 17.6987$ is a light color, and the websafe version is hex FFCCCC . A complement of this color would be $219.1810, 8.7848, -17.6987$, and the grayscale version is $217.0000, 0.0000, 0.0000$.

A 20% lighter version of the original color is $255.0000, 0.0000, 0.0000$, and $162.2210, -8.4900, 16.4692$ is the 20% darker color. If you saturate the color by 10%, you get $204.1040, -14.3483, 28.8498$, and if you desaturate by 10%, it is $229.5340, -3.2213, 6.5477$.

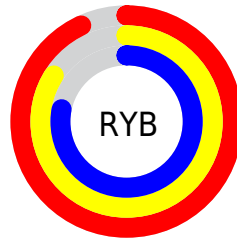
Distribution



Red (93%)

Green (82%)

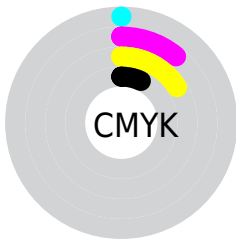
Blue (78%)



Red (93%)

Yellow (84%)

Blue (78%)

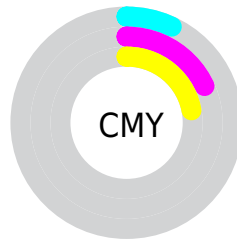


Cyan (0%)

Magenta (11%)

Yellow (16%)

Black (7%)



Cyan (7%)

Magenta (18%)

Yellow (22%)

Brightness & Saturation Gradients

These gradients show how the YUV color 216.8190, -8.7848, 17.6987 changes by changing the brightness by 10 percent. The first figure shows a shift by +10% for each color and the second figure -10%.

Similar to the brightness gradients but the following saturation gradients show a change of the YUV color 216.8190, -8.7848, 17.6987 by changing the saturation by 10% instead.

■ 216.8190, -8.7848,
17.6987

■ 216.8190, -8.7848,
17.6987

255.0000, 0.0000,
0.0000

■ 188.9330, -8.3480,
17.5988

■ 162.2210, -8.4900,
16.4692

■ 135.9220, -8.3425,
15.8544

■ 110.1500, -7.4689,
15.6545

■ 85.5520, -7.1741,
14.4249

■ 62.3670, -6.5899,
13.7101

■ 40.4700, -6.1477,

11.8658

■ 19.0850, -8.9159,
13.0805

■ 0.0000, 0.0000,
0.0000

■ 216.8190, -8.7848,
17.6987

■ 216.8190, -8.7848,
17.6987

■ 204.1040,
-14.3483, 28.8498

■ 229.5340, -3.2213,
6.5477

■ 191.5030,
-19.4750, 39.9009

■ 242.1350, 1.9054,
-4.5034

■ 178.7880,
-25.0385, 51.0519

■ 249.6180, 2.6533,
-11.0660

■ 166.6600,
-30.8914, 61.6882

■ 153.9450,
-36.4549, 72.8392

■ 141.3440,
-41.5816, 83.8903

■ 128.6290,
-47.1451, 95.0414

■ 115.9140,
-52.7086, 106.1924

■ 111.3660,
-54.9034, 110.1810

Harmonies

Analogous

The Analogous color harmony consists of three colors that are next to each other on the color wheel.



217.6820, -4.2802, 19.5729



216.8190, -8.7848, 17.6987



215.6180, -10.6577, 11.7360

Triad

The Triadic color harmony groups three colors that are evenly spaced from another and form a triangle on the color wheel.



216.8190, -8.7848, 17.6987



212.0750, -0.5300, -16.7288



216.2090, 9.7570, -2.8143

Complementary

The Complementary color scheme is a pair of colors which are on the opposite of each other on the color wheel.



216.8190, -8.7848, 17.6987



219.1810, 8.7848, -17.6987

Split Complementary

Split-complementary colors differ from the complementary color scheme. The scheme consists of three colors, the original color and two neighbors of the complement color.



214.4850, 11.0999, -13.5803



216.8190, -8.7848, 17.6987



211.8340, 5.0118, -20.9024

Square

The Square scheme is like the rectangle color scheme, but the four colors are evenly spaced on the color wheel.



216.8190, -8.7848, 17.6987



213.0500, -5.9406, -7.9368



212.3980, 9.6638, -19.6430



217.0640, 6.3774, 7.8369

Rectangle

The Rectangle color scheme consists of four colors that form a rectangle on the color wheel.



216.8190, -8.7848, 17.6987



214.9870, -10.3466, 5.2734



212.3980, 9.6638, -19.6430



215.4150, 10.6414, -6.5030

Sweetspot

The Sweet Spot groups the original color and five complimentary colors.



216.8190, -8.7848, 17.6987



248.2350, -3.0739, 5.9329



213.4400, 6.1921, 20.6621



123.5660, -1.7580, 3.8886



0.0000, 0.0000, 0.0000



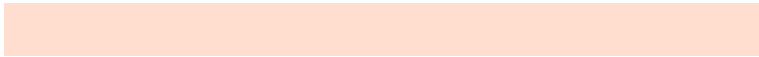
128.0000, 0.0000, 0.0000

Same Dimension

The Same Dimension uses a secret algorithm to generate beautiful new colors.



216.8190, -8.7848, 17.6987



229.5700, -11.1270, 22.3021



227.9720, -14.2832, 7.9176



111.0500, -2.4896, 5.2182



84.6430, -41.7290, 84.5051



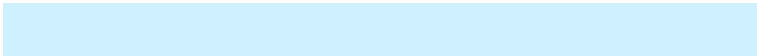
25.5380, -12.5902, 24.9612

Inverse Universe

The Inverse Universe completely reimagines the original color for something new.



219.1810, 8.7848, -17.6987



232.4300, 11.1270, -22.3021



208.0280, 14.2832, -7.9176



111.9500, 2.4897, -5.2181



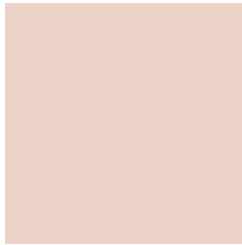
96.3570, 41.7290, -84.5051



28.4620, 12.5902, -24.9612

Previews

White Background



This preview shows how the YUV color 216.8190, -8.7848, 17.6987 looks on a white background.

Color Contrast Check

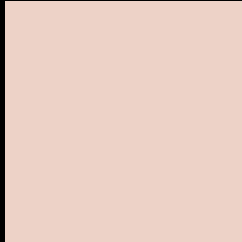
Large Text (above 18pt) WCAG AA × Fail

Any Text WCAG AA × Fail

Large Text (above 18pt) WCAG AAA × Fail

Any Text WCAG AAA × Fail

Black Background



This preview shows how the YUV color 216.8190, -8.7848, 17.6987 looks on a black background.

Color Contrast Check

Large Text (above 18pt) WCAG AA ✓ Pass

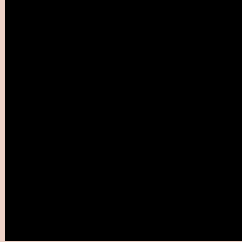
Any Text WCAG AA ✓ Pass

Large Text (above 18pt) WCAG AAA ✓ Pass

Any Text WCAG AAA ✓ Pass

If you want to check with other color combinations, try the [Color Contrast Checker](#).

YUV 216.8190, -8.7848, 17.6987 Background



This preview shows how black text looks on a background with the YUV color 216.8190, -8.7848, 17.6987.

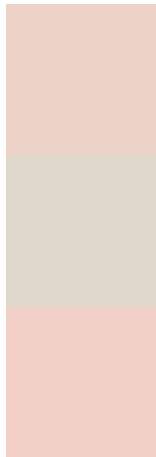


This preview shows how white text looks on a background with the YUV color 216.8190, -8.7848,

Color Blindness Simulation

Color vision deficiency is a very complex topic, and I could not describe the different causes any better than Wikipedia does, so if you want to learn more, you should check out their [article about color blindness](#).

Dichromacy



Original Color

216.8190, -8.7848, 17.6987

Protanopia

215.9100, -6.8576, 6.2179

Deuteranopia

217.1400, -8.9430, 21.8022



Tritanopia

218.1040, 2.4137, 19.2028

Trichromacy



Original Color

216.8190, -8.7848, 17.6987

Protanomaly

216.1170, -7.4527, 10.4214

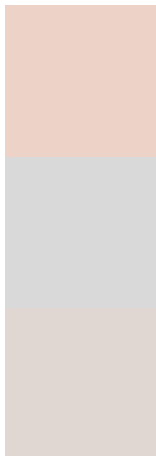
Deuteranomaly

217.1290, -8.9376, 20.0579

Tritanomaly

217.3660, -1.6594, 18.9730

Monochromacy



Original Color

216.8190, -8.7848, 17.6987

Achromatopsia

217.0000, 0.0000, 0.0000

Achromatomaly

216.5340, -3.2213, 6.5477

CSS Examples

Text

The CSS property to change the color of the text to YUV 216.8190, -8.7848, 17.6987 is called "color". The color property can be set on classes, ids or directly on the HTML element.

This example shows how text in the color `rgb(237, 210, 199)` looks like.

```
.text, #text, p{  
    color:rgb(237, 210, 199)  
}
```

If you want to add a text shadow in that color use the text-shadow property, you can generate a text shadow directly with our [CSS Text Shadow Generator](#).

Here you see how black text with a 4 pixel rgb(237, 210, 199) colored shadow looks like.

```
.shadow{ text-shadow: 4px 4px 2px rgb(237, 210, 199) }
```

Border

The CSS property to change the border of an element to YUV 216.8190, -8.7848, 17.6987 is called "border". The border property can be set on classes, ids or directly on the HTML element.

This example shows the color as border, it can be applied via the CSS property "border" or "border-color".

```
.border, #border, table{ border:4px solid rgb(237, 210, 199) }
```


If only the border color should be changed use the property `border-color`.

```
.border{ border-color:rgb(237, 210, 199) }
```

If you want to add a box shadow in that color use:

Here you see how a box with a 4 pixel `rgb(237, 210, 199)` colored shadow looks like.

```
.boxshadow{ -moz-box-shadow:4px 4px 4px  
4px rgb(237, 210, 199); -webkit-box-  
shadow:4px 4px 4px 4px rgb(237, 210, 199);  
box-shadow:4px 4px 4px 4px rgb(237, 210,  
199) }
```

Background

The CSS property to change the background color of an element to YUV 216.8190, -8.7848, 17.6987 is called "background". The background property can be set on classes, ids or directly on the HTML element.

```
.background, #background, body{  
background: rgb(237, 210, 199) }
```

If only the background color should be changed can be used:

```
.background{ background-color: rgb(237,  
210, 199) }
```

This example shows the color as background, it is applied via the CSS property "background".

To optimize and compress your CSS code, you can use our [online CSS compressor and optimizer](#) based on csstidy. If you want to create a linear or radial gradient as background or border, check our [CSS Gradient Generator](#).

Hey! You found this booklet interesting? Support Converting Colors with the new Membership Option!

The pro membership hides all ads, plus gives you double the colors in the color bucket, and more awesome pro features!

[Learn more, Memberships starting at \\$2.50/m!](#)

**Follow me
on Twitter!**

@ConvertingColor