

Converting Colors

YUV(217.2920, -9.5110,
17.2839)

Have a look what the booklet for
YUV(217.2920, -9.5110, 17.2839)
contains.

YUV(217.2920, -9.5110, 17.2839)	3
<i>Conversions</i>	4
<i>Details</i>	6
<i>Harmonies</i>	12
<i>Previews</i>	24
<i>Color Blindness Simulation</i>	28
<i>CSS Examples</i>	31

Color

**YUV(217.2920, -9.5110,
17.2839)**

Conversions

Conversions Part 1

Format	Color
Hex	EDD3C6
RGB	237, 211, 198
RGB Percent	93%, 83%, 78%
CMY	0.0706, 0.1725, 0.2235
CMYK	0.00, 0.11, 0.16, 0.07
HSL	20°, 52%, 85%
HSV	20°, 16%, 93%
XYZ	68.4124, 68.6703, 63.0750
YIQ	217.2920, 19.6690, 1.4690

Conversions

Conversions Part 2

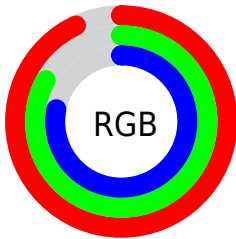
Format	Color
R _Y B	237, 218, 198
Decimal	15586246
CIE Lab	86.34, 6.97, 9.73
CIE LCh	86, 11.966, 54.371
Yxy	68.6703, 0.3418, 0.3431
Android (android.graphics.Color)	4293776326 (0xFFEDD3C6)
YUV	217.2920, -9.5110, 17.2839
Hunter-Lab	82.8675, 2.3448, 12.8784

Details

The YUV color $217.2920, -9.5110, 17.2839$ is a light color, and the websafe version is hex FFCCCC . A complement of this color would be $217.7080, 9.5110, -17.2839$, and the grayscale version is $217.0000, 0.0000, 0.0000$.

A 20% lighter version of the original color is $255.0000, 0.0000, 0.0000$, and $162.1070, -8.9268, 16.5692$ is the 20% darker color. If you saturate the color by 10%, you get $205.1640, -15.3639, 27.9202$, and if you desaturate by 10%, it is $229.4200, -3.6581, 6.6477$.

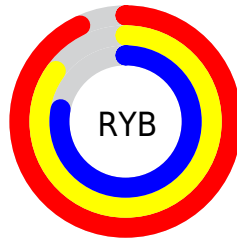
Distribution



Red (93%)

Green (83%)

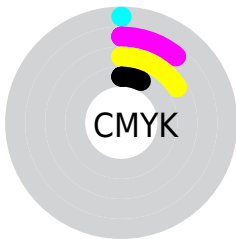
Blue (78%)



Red (93%)

Yellow (85%)

Blue (78%)

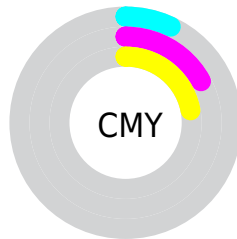


Cyan (0%)

Magenta (11%)

Yellow (16%)

Black (7%)



Cyan (7%)

Magenta (17%)

Yellow (22%)

Brightness & Saturation Gradients

These gradients show how the YUV color 217.2920, -9.5110, 17.2839 changes by changing the brightness by 10 percent. The first figure shows a shift by +10% for each color and the second figure -10%.

Similar to the brightness gradients but the following saturation gradients show a change of the YUV color 217.2920, -9.5110, 17.2839 by changing the saturation by 10% instead.

■ 217.2920, -9.5110,
17.2839

■ 217.2920, -9.5110,
17.2839

255.0000, 0.0000,
0.0000

■ 189.4060, -9.0742,
17.1839

■ 162.1070, -8.9268,
16.5692

■ 135.9220, -8.3425,
15.8544

■ 110.6230, -8.1951,
15.2396

■ 86.0250, -7.9003,
14.0101

■ 62.8400, -7.3161,
13.2953

■ 40.9430, -6.8739,

11.4510

■ 19.5580, -9.6421,
12.6656

■ 0.0000, 0.0000,
0.0000

■ 217.2920, -9.5110,
17.2839

■ 217.2920, -9.5110,
17.2839

■ 205.1640,
-15.3639, 27.9202

■ 229.4200, -3.6581,
6.6477

■ 193.1500,
-20.7799, 38.4565

■ 241.4340, 1.7580,
-3.8886

■ 181.6090,
-26.9222, 48.5779

■ 249.6180, 2.6533,
-11.0660

■ 169.4810,
-32.7751, 59.2142

■ 157.4670,
-38.1912, 69.7504

■ 145.3390,
-44.0441, 80.3867

■ 133.2110,
-49.8970, 91.0230

■ 121.6700,
-56.0393, 101.1444

■ 117.2360,
-57.7973, 105.0330

Harmonies

Analogous

The Analogous color harmony consists of three colors that are next to each other on the color wheel.



218.3400, -5.5906, 19.8728



217.2920, -9.5110, 17.2839



215.9060, -10.7997, 10.6064

Triad

The Triadic color harmony groups three colors that are evenly spaced from another and form a triangle on the color wheel.



217.2920, -9.5110, 17.2839



212.5910, 0.2016, -18.0583



217.2200, 9.7515, -1.0699

Complementary

The Complementary color scheme is a pair of colors which are on the opposite of each other on the color wheel.



217.2920, -9.5110, 17.2839



217.7080, 9.5110, -17.2839

Split Complementary

Split-complementary colors differ from the complementary color scheme. The scheme consists of three colors, the original color and two neighbors of the complement color.



215.4960, 11.0945, -11.8360



217.2920, -9.5110, 17.2839



212.7630, 6.0328, -21.7172

Square

The Square scheme is like the rectangle color scheme, but the four colors are evenly spaced on the color wheel.



217.2920, -9.5110, 17.2839



213.2670, -5.0616, -9.8812



213.5120, 10.1006, -19.7430



217.8470, 5.4984, 9.7812

Rectangle

The Rectangle color scheme consists of four colors that form a rectangle on the color wheel.



217.2920, -9.5110, 17.2839



215.2750, -10.4886, 4.1438



213.5120, 10.1006, -19.7430



216.4260, 10.6360, -4.7586

Sweetspot

The Sweet Spot groups the original color and five complimentary colors.



217.2920, -9.5110, 17.2839



248.8220, -3.3632, 5.4181



212.6250, 5.6079, 21.3769



123.5660, -1.7580, 3.8886



0.0000, 0.0000, 0.0000



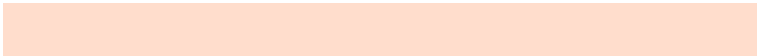
128.0000, 0.0000, 0.0000

Same Dimension

The Same Dimension uses a secret algorithm to generate beautiful new colors.



217.2920, -9.5110, 17.2839



229.2280, -12.4374, 22.6020



228.4450, -15.0094, 7.5027



111.0500, -2.4896, 5.2182



89.3390, -44.0441, 80.3867



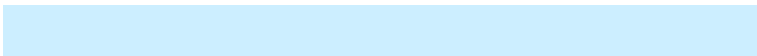
26.7120, -13.1690, 23.9316

Inverse Universe

The Inverse Universe completely reimagines the original color for something new.



217.7080, 9.5110, -17.2839



229.7720, 12.4374, -22.6020



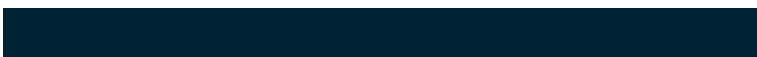
206.5550, 15.0094, -7.5027



111.3630, 2.7790, -4.7034



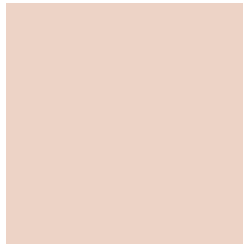
91.6610, 44.0441, -80.3867



27.2880, 13.1690, -23.9316

Previews

White Background



This preview shows how the YUV color 217.2920, -9.5110, 17.2839 looks on a white background.

Color Contrast Check

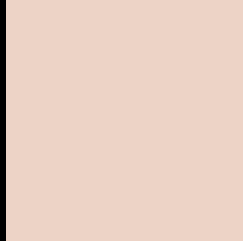
Large Text (above 18pt) WCAG AA × Fail

Any Text WCAG AA × Fail

Large Text (above 18pt) WCAG AAA × Fail

Any Text WCAG AAA × Fail

Black Background



This preview shows how the YUV color 217.2920, -9.5110, 17.2839 looks on a black background.

Color Contrast Check

Large Text (above 18pt) WCAG AA ✓ Pass

Any Text WCAG AA ✓ Pass

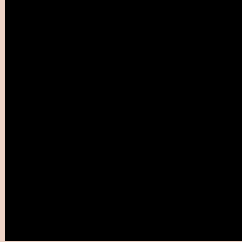
Large Text (above 18pt) WCAG AAA ✓ Pass

Any Text WCAG AAA ✓ Pass

If you want to check with other color combinations, try the [Color Contrast Checker](#).

YUV 217.2920, -9.5110, 17.2839

Background



This preview shows how black text looks on a background with the YUV color 217.2920, -9.5110, 17.2839.

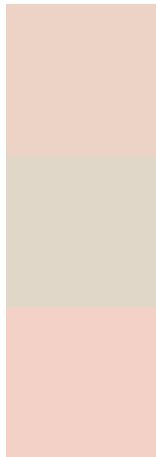


This preview shows how white text looks on a background with the YUV color 217.2920, -9.5110,

Color Blindness Simulation

Color vision deficiency is a very complex topic, and I could not describe the different causes any better than Wikipedia does, so if you want to learn more, you should check out their [article about color blindness](#).

Dichromacy



Original Color

217.2920, -9.5110, 17.2839

Protanopia

215.9810, -7.8786, 7.0327

Deuteranopia

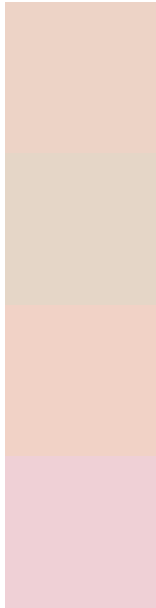
218.2110, -9.9640, 22.6170



Tritanopia

218.6910, 2.1243, 18.6880

Trichromacy



Original Color

217.2920, -9.5110, 17.2839

Protanomaly

216.7750, -8.7631, 10.7213

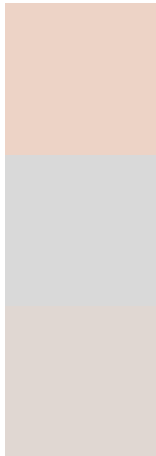
Deuteranomaly

217.9010, -9.8112, 20.2578

Tritanomaly

217.9530, -1.9488, 18.4582

Monochromacy



Original Color

217.2920, -9.5110, 17.2839

Achromatopsia

217.0000, 0.0000, 0.0000

Achromatomaly

217.1210, -3.5107, 6.0329

CSS Examples

Text

The CSS property to change the color of the text to YUV 217.2920, -9.5110, 17.2839 is called "color". The color property can be set on classes, ids or directly on the HTML element.

This example shows how text in the color `rgb(237, 211, 198)` looks like.

```
.text, #text, p{  
    color:rgb(237, 211, 198)  
}
```

If you want to add a text shadow in that color use the text-shadow property, you can generate a text shadow directly with our [CSS Text Shadow Generator](#).

Here you see how black text with a 4 pixel rgb(237, 211, 198) colored shadow looks like.

```
.shadow{ text-shadow: 4px 4px 2px rgb(237, 211, 198) }
```

Border

The CSS property to change the border of an element to YUV 217.2920, -9.5110, 17.2839 is called "border". The border property can be set on classes, ids or directly on the HTML element.

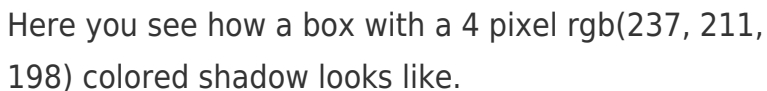
This example shows the color as border, it can be applied via the CSS property "border" or "border-color".

```
.border, #border, table{ border:4px solid rgb(237, 211, 198) }
```


If only the border color should be changed use the property `border-color`.

```
.border{ border-color:rgb(237, 211, 198) }
```

If you want to add a box shadow in that color use:



Here you see how a box with a 4 pixel `rgb(237, 211, 198)` colored shadow looks like.

```
.boxshadow{ -moz-box-shadow:4px 4px 4px 4px rgb(237, 211, 198); -webkit-box-shadow:4px 4px 4px 4px rgb(237, 211, 198); box-shadow:4px 4px 4px 4px rgb(237, 211, 198) }
```

Background

The CSS property to change the background color of an element to YUV 217.2920, -9.5110, 17.2839 is called "background". The background property can be set on classes, ids or directly on the HTML element.

```
.background, #background, body{  
background: rgb(237, 211, 198) }
```

If only the background color should be changed can be used:

```
.background{ background-color: rgb(237,  
211, 198) }
```

This example shows the color as background, it is applied via the CSS property "background".

To optimize and compress your CSS code, you can use our [online CSS compressor and optimizer](#) based on csstidy. If you want to create a linear or radial gradient as background or border, check our [CSS Gradient Generator](#).

Hey! You found this booklet interesting? Support Converting Colors with the new Membership Option!

The pro membership hides all ads, plus gives you double the colors in the color bucket, and more awesome pro features!

[Learn more, Memberships starting at \\$2.50/m!](#)

**Follow me
on Twitter!**

@ConvertingColor