

Converting Colors

YUV(217.6530, -0.3219, 9.9513)

Have a look what the booklet for
YUV(217.6530, -0.3219, 9.9513)
contains.

YUV(217.6530, -0.3219, 9.9513)	3
<i>Conversions</i>	4
<i>Details</i>	6
<i>Harmonies</i>	12
<i>Previews</i>	24
<i>Color Blindness Simulation</i>	28
<i>CSS Examples</i>	31

Color

**YUV(217.6530, -0.3219,
9.9513)**

Conversions

Conversions Part 1

Format	Color
Hex	E5D4D9
RGB	229, 212, 217
RGB Percent	90%, 83%, 85%
CMY	0.1020, 0.1686, 0.1490
CMYK	0.00, 0.07, 0.05, 0.10
HSL	342°, 25%, 86%
HSV	342°, 7%, 90%
XYZ	68.3810, 68.7547, 75.3126
YIQ	217.6530, 8.5270, 5.1590

Conversions

Conversions Part 2

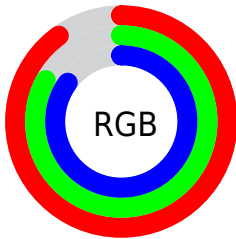
Format	Color
R _Y B	229, 212, 217
Decimal	15062233
CIE Lab	86.38, 6.72, -0.35
CIE LCh	86, 6.731, 356.991
Yxy	68.7547, 0.3219, 0.3236
Android (android.graphics.Color)	4293252313 (0xFFE5D4D9)
YUV	217.6530, -0.3219, 9.9513
Hunter-Lab	82.9185, 2.0975, 4.1915

Details

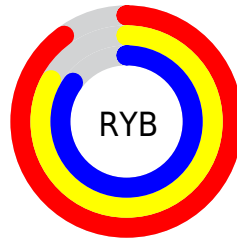
The YUV color $217.6530, -0.3219, 9.9513$ is a light color, and the websafe version is hex `CCCCCC`. A complement of this color would be $223.3470, 0.3219, -9.9513$, and the grayscale version is $218.0000, 0.0000, 0.0000$.

A 20% lighter version of the original color is $255.0000, 0.0000, 0.0000$, and $162.6530, -0.3219, 9.9513$ is the 20% darker color. If you saturate the color by 10%, you get $202.3280, -0.6547, 23.3913$, and if you desaturate by 10%, it is $232.9780, 0.0108, -3.4887$.

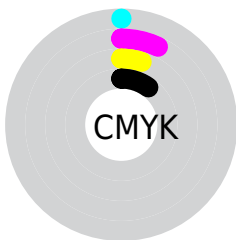
Distribution



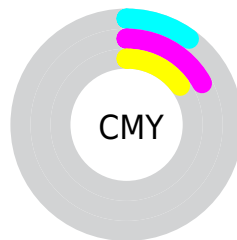
- Red (90%)
- Green (83%)
- Blue (85%)



- Red (90%)
- Yellow (83%)
- Blue (85%)



- Cyan (0%)
- Magenta (7%)
- Yellow (5%)
- Black (10%)



- Cyan (10%)
- Magenta (17%)
- Yellow (15%)

Brightness & Saturation Gradients

These gradients show how the YUV color 217.6530, -0.3219, 9.9513 changes by changing the brightness by 10 percent. The first figure shows a shift by +10% for each color and the second figure -10%.

Similar to the brightness gradients but the following saturation gradients show a change of the YUV color 217.6530, -0.3219, 9.9513 by changing the saturation by 10% instead.

■ 217.6530, -0.3219,
9.9513

■ 217.6530, -0.3219,
9.9513

255.0000, 0.0000,
0.0000

■ 189.6530, -0.3219,
9.9513

■ 162.6530, -0.3219,
9.9513

■ 136.3540, -0.1745,
9.3365

■ 111.0550, -0.0271,
8.7218

■ 86.6420, -0.3165,
8.2070

■ 63.3430, -0.1691,
7.5922

■ 41.3430, -0.1691,

7.5922

■ 21.0440, -0.0217,
6.9774

■ 0.0000, 0.0000,
0.0000

■ 217.6530, -0.3219,
9.9513

■ 217.6530, -0.3219,
9.9513

■ 202.3280, -0.6547,
23.3913

■ 232.9780, 0.0108,
-3.4887

■ 187.0030, -0.9875,
36.8314

■ 246.5420, 1.2118,
-15.3843

■ 171.6780, -1.3203,
50.2714

■ 247.2260, 3.8326,
-15.9842

■ 156.2390, -2.0898,
63.8114

■ 141.5010, -2.7120,
76.7366

■ 126.1760, -3.0448,
90.1766

■ 110.8510, -3.3775,
103.6167

■ 95.5260, -3.7103,
117.0567

■ 80.2010, -4.0431,
130.4967

Harmonies

Analogous

The Analogous color harmony consists of three colors that are next to each other on the color wheel.



217.4290, 2.7465, 5.7628



217.6530, -0.3219, 9.9513



217.2680, -3.0901, 11.1660

Triad

The Triadic color harmony groups three colors that are evenly spaced from another and form a triangle on the color wheel.



217.6530, -0.3219, 9.9513



215.6210, -5.2362, -0.5446



215.1280, 5.8529, -10.6363

Complementary

The Complementary color scheme is a pair of colors which are on the opposite of each other on the color wheel.



217.6530, -0.3219, 9.9513



223.3470, 0.3219, -9.9513

Split Complementary

Split-complementary colors differ from the complementary color scheme. The scheme consists of three colors, the original color and two neighbors of the complement color.



214.5470, 3.6743, -11.8807



217.6530, -0.3219, 9.9513



214.5710, -2.7465, -5.7628

Square

The Square scheme is like the rectangle color scheme, but the four colors are evenly spaced on the color wheel.



217.6530, -0.3219, 9.9513



215.8390, -5.8366, 5.4032



214.3470, 0.3219, -9.9513



215.9760, 6.4208, -6.1180

Rectangle

The Rectangle color scheme consists of four colors that form a rectangle on the color wheel.



217.6530, -0.3219, 9.9513



217.1000, -4.9793, 10.4363



214.3470, 0.3219, -9.9513



214.6010, 5.1267, -11.0511

Sweetspot

The Sweet Spot groups the original color and five complimentary colors.



217.6530, -0.3219, 9.9513



251.6090, -0.3002, 2.9739



217.5260, 5.6567, 5.6777



126.0110, -0.0054, 1.7444



0.0000, 0.0000, 0.0000



128.0000, 0.0000, 0.0000

Same Dimension

The Same Dimension uses a secret algorithm to generate beautiful new colors.



217.6530, -0.3219, 9.9513



239.6750, -0.3328, 13.4400



218.8440, -3.3741, 8.9068



107.0440, -0.0217, 6.9774



59.4490, -3.6724, 104.8462



16.9590, -0.9658, 29.8540

Inverse Universe

The Inverse Universe completely reimagines the original color for something new.



217.6530, -0.3219, 9.9513



239.6750, -0.3328, 13.4400



222.1560, 3.3741, -8.9068



107.0440, -0.0217, 6.9774



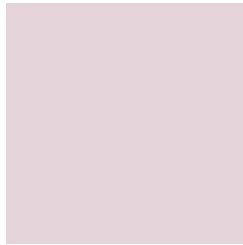
59.4490, -3.6724, 104.8462



16.9590, -0.9658, 29.8540

Previews

White Background



This preview shows how the YUV color 217.6530, -0.3219, 9.9513 looks on a white background.

Color Contrast Check

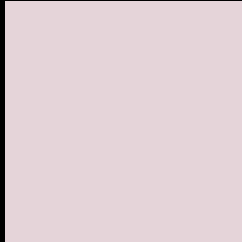
Large Text (above 18pt) WCAG AA × Fail

Any Text WCAG AA × Fail

Large Text (above 18pt) WCAG AAA × Fail

Any Text WCAG AAA × Fail

Black Background



This preview shows how the YUV color 217.6530, -0.3219, 9.9513 looks on a black background.

Color Contrast Check

Large Text (above 18pt) WCAG AA ✓ Pass

Any Text WCAG AA ✓ Pass

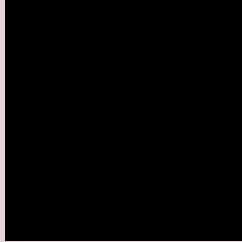
Large Text (above 18pt) WCAG AAA ✓ Pass

Any Text WCAG AAA ✓ Pass

If you want to check with other color combinations, try the [Color Contrast Checker](#).

YUV 217.6530, -0.3219, 9.9513

Background



This preview shows how black text looks on a background with the YUV color 217.6530, -0.3219, 9.9513.



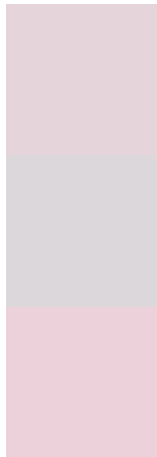
This preview shows how white text looks on a background with the YUV color 217.6530, -0.3219,

9.9513.

Color Blindness Simulation

Color vision deficiency is a very complex topic, and I could not describe the different causes any better than Wikipedia does, so if you want to learn more, you should check out their [article about color blindness](#).

Dichromacy



Original Color

217.6530, -0.3219, 9.9513

Protanopia

216.6520, 1.1576, 2.0592

Deuteranopia

218.0990, -0.0488, 15.6992



Tritanopia

217.9180, 4.4774, 10.5959

Trichromacy



Original Color

217.6530, -0.3219, 9.9513

Protanomaly

217.1470, 0.4205, 5.1331

Deuteranomaly

217.7890, 0.1040, 13.3400

Tritanomaly

218.0490, 2.4408, 10.4810

Monochromacy



Original Color

217.6530, -0.3219, 9.9513

Achromatopsia

218.0000, 0.0000, 0.0000

Achromatomaly

218.0220, -0.0108, 3.4887

CSS Examples

Text

The CSS property to change the color of the text to YUV 217.6530, -0.3219, 9.9513 is called "color". The color property can be set on classes, ids or directly on the HTML element.

This example shows how text in the color `rgb(229, 212, 217)` looks like.

```
.text, #text, p{  
    color:rgb(229, 212, 217)  
}
```

If you want to add a text shadow in that color use the text-shadow property, you can generate a text shadow directly with our [CSS Text Shadow Generator](#).

Here you see how black text with a 4 pixel rgb(229, 212, 217) colored shadow looks like.

```
.shadow{ text-shadow: 4px 4px 2px rgb(229, 212, 217) }
```

Border

The CSS property to change the border of an element to YUV 217.6530, -0.3219, 9.9513 is called "border". The border property can be set on classes, ids or directly on the HTML element.

This example shows the color as border, it can be applied via the CSS property "border" or "border-color".

```
.border, #border, table{ border:4px solid rgb(229, 212, 217) }
```


If only the border color should be changed use the property border-color.

```
.border{ border-color:rgb(229, 212, 217) }
```

If you want to add a box shadow in that color use:

Here you see how a box with a 4 pixel rgb(229, 212, 217) colored shadow looks like.

```
.boxshadow{ -moz-box-shadow:4px 4px 4px  
4px rgb(229, 212, 217); -webkit-box-  
shadow:4px 4px 4px 4px rgb(229, 212, 217);  
box-shadow:4px 4px 4px 4px rgb(229, 212,  
217) }
```

Background

The CSS property to change the background color of an element to YUV 217.6530, -0.3219, 9.9513 is called "background". The background property can be set on classes, ids or directly on the HTML element.

```
.background, #background, body{  
background: rgb(229, 212, 217) }
```

If only the background color should be changed can be used:

```
.background{ background-color: rgb(229,  
212, 217) }
```

This example shows the color as background, it is applied via the CSS property "background".

To optimize and compress your CSS code, you can use our [online CSS compressor and optimizer](#) based on csstidy. If you want to create a linear or radial gradient as background or border, check our [CSS Gradient Generator](#).

Hey! You found this booklet interesting? Support Converting Colors with the new Membership Option!

The pro membership hides all ads, plus gives you double the colors in the color bucket, and more awesome pro features!

[Learn more, Memberships starting at \\$2.50/m!](#)

**Follow me
on Twitter!**

@ConvertingColor