

Converting Colors

YUV(217.8080, -8.7793,
15.9544)

Have a look what the booklet for
YUV(217.8080, -8.7793, 15.9544)
contains.

YUV(217.8080, -8.7793, 15.9544)	3
<i>Conversions</i>	4
<i>Details</i>	6
<i>Harmonies</i>	12
<i>Previews</i>	24
<i>Color Blindness Simulation</i>	28
<i>CSS Examples</i>	31

Color

**YUV(217.8080, -8.7793,
15.9544)**

Conversions

Conversions Part 1

Format	Color
Hex	ECD4C8
RGB	236, 212, 200
RGB Percent	93%, 83%, 78%
CMY	0.0745, 0.1686, 0.2157
CMYK	0.00, 0.10, 0.15, 0.07
HSL	20°, 49%, 85%
HSV	20°, 15%, 93%
XYZ	68.5609, 69.0900, 64.3657
YIQ	217.8080, 18.1560, 1.3560

Conversions

Conversions Part 2

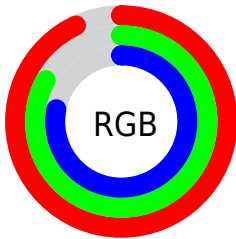
Format	Color
R _Y B	236, 218, 200
Decimal	15520968
CIE Lab	86.55, 6.40, 8.96
CIE LCh	87, 11.006, 54.457
Yxy	69.0900, 0.3394, 0.3420
Android (android.graphics.Color)	4293711048 (0xFFECD4C8)
YUV	217.8080, -8.7793, 15.9544
Hunter-Lab	83.1204, 1.7730, 12.2720

Details

The YUV color $217.8080, -8.7793, 15.9544$ is a light color, and the websafe version is hex FFCCCC . A complement of this color would be $218.1920, 8.7793, -15.9544$, and the grayscale version is $218.0000, 0.0000, 0.0000$.

A 20% lighter version of the original color is $255.0000, 0.0000, 0.0000$, and $162.6230, -8.1951, 15.2396$ is the 20% darker color. If you saturate the color by 10%, you get $205.6800, -14.6322, 26.5906$, and if you desaturate by 10%, it is $229.9360, -2.9264, 5.3181$.

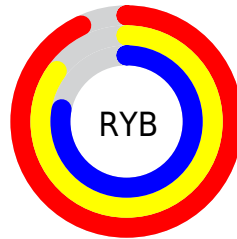
Distribution



Red (93%)

Green (83%)

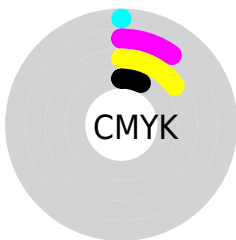
Blue (78%)



Red (93%)

Yellow (85%)

Blue (78%)

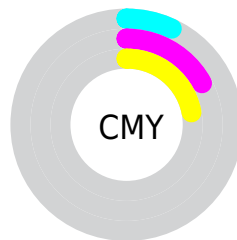


Cyan (0%)

Magenta (10%)

Yellow (15%)

Black (7%)



Cyan (7%)

Magenta (17%)

Yellow (22%)

Brightness & Saturation Gradients

These gradients show how the YUV color 217.8080, -8.7793, 15.9544 changes by changing the brightness by 10 percent. The first figure shows a shift by +10% for each color and the second figure -10%.

Similar to the brightness gradients but the following saturation gradients show a change of the YUV color 217.8080, -8.7793, 15.9544 by changing the saturation by 10% instead.

■ 217.8080, -8.7793,
15.9544

■ 217.8080, -8.7793,
15.9544

255.0000, 0.0000,
0.0000

■ 189.9220, -8.3425,
15.8544

■ 162.6230, -8.1951,
15.2396

■ 136.3240, -8.0477,
14.6249

■ 111.1390, -7.4635,
13.9101

■ 86.5410, -7.1687,
12.6805

■ 63.2420, -7.0213,
12.0658

■ 41.0570, -6.4371,

11.3510

■ 20.0740, -8.9105,
11.3361

■ 0.0000, 0.0000,
0.0000

■ 217.8080, -8.7793,
15.9544

■ 217.8080, -8.7793,
15.9544

■ 205.6800,
-14.6322, 26.5906

■ 229.9360, -2.9264,
5.3181

■ 194.2530,
-20.3377, 36.6121

■ 241.3630, 2.7790,
-4.7034

■ 182.1250,
-26.1906, 47.2484

■ 249.3190, 2.8007,
-11.6808

■ 170.1110,
-31.6067, 57.7847

■ 157.9830,
-37.4596, 68.4209

■ 146.4420,
-43.6019, 78.5424

■ 134.4280,
-49.0180, 89.0786

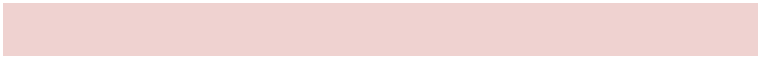
■ 122.3000,
-54.8709, 99.7149

■ 116.9370,
-57.6499, 104.4183

Harmonies

Analogous

The Analogous color harmony consists of three colors that are next to each other on the color wheel.



218.4430, -5.1484, 18.0285



217.8080, -8.7793, 15.9544



216.4220, -10.0680, 9.2769

Triad

The Triadic color harmony groups three colors that are evenly spaced from another and form a triangle on the color wheel.



217.8080, -8.7793, 15.9544



213.6020, 0.1962, -16.3140



217.6930, 9.0254, -1.4848

Complementary

The Complementary color scheme is a pair of colors which are on the opposite of each other on the color wheel.



217.8080, -8.7793, 15.9544



218.1920, 8.7793, -15.9544

Split Complementary

Split-complementary colors differ from the complementary color scheme. The scheme consists of three colors, the original color and two neighbors of the complement color.



215.9800, 10.3629, -10.5065



217.8080, -8.7793, 15.9544



213.6600, 5.5906, -19.8728

Square

The Square scheme is like the rectangle color scheme, but the four colors are evenly spaced on the color wheel.



217.8080, -8.7793, 15.9544



213.9790, -4.9196, -8.7516



214.2950, 9.2216, -17.7987



219.0210, 4.9196, 8.7516

Rectangle

The Rectangle color scheme consists of four colors that form a rectangle on the color wheel.



217.8080, -8.7793, 15.9544



215.5030, -9.6150, 3.9439



214.2950, 9.2216, -17.7987



217.1980, 9.7624, -4.5586

Sweetspot

The Sweet Spot groups the original color and five complimentary colors.



217.8080, -8.7793, 15.9544



248.8220, -3.3632, 5.4181



213.5000, 5.1765, 19.7325



123.5660, -1.7580, 3.8886



0.0000, 0.0000, 0.0000



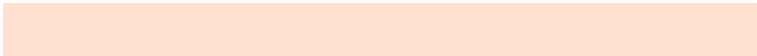
128.0000, 0.0000, 0.0000

Same Dimension

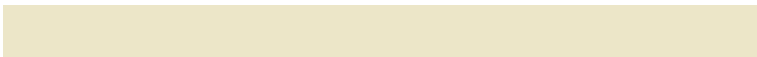
The Same Dimension uses a secret algorithm to generate beautiful new colors.



217.8080, -8.7793, 15.9544



231.5590, -11.1216, 20.5578



228.3740, -13.9884, 6.6880



111.0500, -2.4896, 5.2182



89.3390, -44.0441, 80.3867



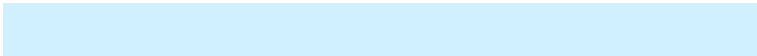
26.7120, -13.1690, 23.9316

Inverse Universe

The Inverse Universe completely reimagines the original color for something new.



218.1920, 8.7793, -15.9544



232.4410, 11.1216, -20.5578



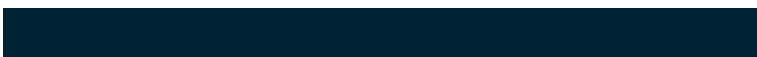
207.6260, 13.9884, -6.6880



111.3630, 2.7790, -4.7034



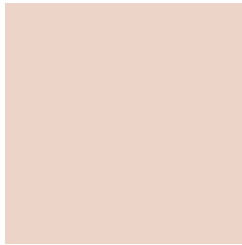
91.6610, 44.0441, -80.3867



27.2880, 13.1690, -23.9316

Previews

White Background



This preview shows how the YUV color 217.8080, -8.7793, 15.9544 looks on a white background.

Color Contrast Check

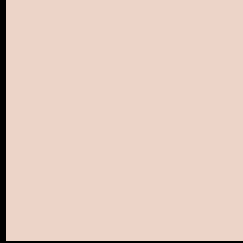
Large Text (above 18pt) WCAG AA × Fail

Any Text WCAG AA × Fail

Large Text (above 18pt) WCAG AAA × Fail

Any Text WCAG AAA × Fail

Black Background



This preview shows how the YUV color 217.8080, -8.7793, 15.9544 looks on a black background.

Color Contrast Check

Large Text (above 18pt) WCAG AA ✓ Pass

Any Text WCAG AA ✓ Pass

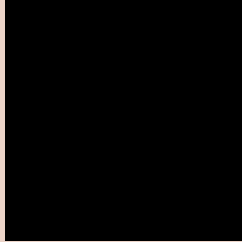
Large Text (above 18pt) WCAG AAA ✓ Pass

Any Text WCAG AAA ✓ Pass

If you want to check with other color combinations, try the [Color Contrast Checker](#).

YUV 217.8080, -8.7793, 15.9544

Background



This preview shows how black text looks on a background with the YUV color 217.8080, -8.7793, 15.9544.



This preview shows how white text looks on a background with the YUV color 217.8080, -8.7793,

15.9544.

Color Blindness Simulation

Color vision deficiency is a very complex topic, and I could not describe the different causes any better than Wikipedia does, so if you want to learn more, you should check out their [article about color blindness](#).

Dichromacy



Original Color

217.8080, -8.7793, 15.9544

Protanopia

216.7960, -7.2944, 6.3179

Deuteranopia

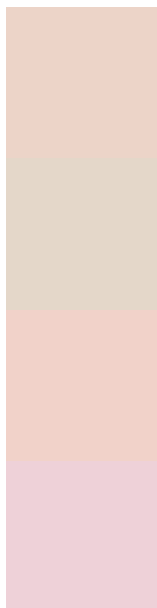
218.5530, -8.6536, 22.3170



Tritanopia

219.2070, 2.8559, 17.3585

Trichromacy



Original Color

217.8080, -8.7793, 15.9544

Protanomaly

217.2910, -8.0315, 9.3918

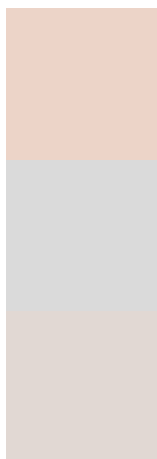
Deuteranomaly

218.2430, -8.5008, 19.9579

Tritanomaly

218.4690, -1.2172, 17.1287

Monochromacy



Original Color

217.8080, -8.7793, 15.9544

Achromatopsia

218.0000, 0.0000, 0.0000

Achromatomaly

218.1210, -3.5107, 6.0329

CSS Examples

Text

The CSS property to change the color of the text to YUV 217.8080, -8.7793, 15.9544 is called "color". The color property can be set on classes, ids or directly on the HTML element.

This example shows how text in the color `rgb(236, 212, 200)` looks like.

```
.text, #text, p{  
    color:rgb(236, 212, 200)  
}
```

If you want to add a text shadow in that color use the text-shadow property, you can generate a text shadow directly with our [CSS Text Shadow Generator](#).

Here you see how black text with a 4 pixel rgb(236, 212, 200) colored shadow looks like.

```
.shadow{ text-shadow: 4px 4px 2px rgb(236, 212, 200) }
```

Border

The CSS property to change the border of an element to YUV 217.8080, -8.7793, 15.9544 is called "border". The border property can be set on classes, ids or directly on the HTML element.

This example shows the color as border, it can be applied via the CSS property "border" or "border-color".

```
.border, #border, table{ border:4px solid rgb(236, 212, 200) }
```


If only the border color should be changed use the property `border-color`.

```
.border{ border-color:rgb(236, 212, 200) }
```

If you want to add a box shadow in that color use:

Here you see how a box with a 4 pixel `rgb(236, 212, 200)` colored shadow looks like.

```
.boxshadow{ -moz-box-shadow:4px 4px 4px  
4px rgb(236, 212, 200); -webkit-box-  
shadow:4px 4px 4px 4px rgb(236, 212, 200);  
box-shadow:4px 4px 4px 4px rgb(236, 212,  
200) }
```

Background

The CSS property to change the background color of an element to YUV 217.8080, -8.7793, 15.9544 is called "background". The background property can be set on classes, ids or directly on the HTML element.

```
.background, #background, body{  
background: rgb(236, 212, 200) }
```

If only the background color should be changed can be used:

```
.background{ background-color: rgb(236,  
212, 200) }
```

This example shows the color as background, it is applied via the CSS property "background".

To optimize and compress your CSS code, you can use our [online CSS compressor and optimizer](#) based on csstidy. If you want to create a linear or radial gradient as background or border, check our [CSS Gradient Generator](#).

Hey! You found this booklet interesting? Support Converting Colors with the new Membership Option!

The pro membership hides all ads, plus gives you double the colors in the color bucket, and more awesome pro features!

[Learn more, Memberships starting at \\$2.50/m!](#)

**Follow me
on Twitter!**

@ConvertingColor