

# Converting Colors

YUV(219.9150, -4.3951, 9.7215)

Have a look what the booklet for  
YUV(219.9150, -4.3951, 9.7215)  
contains.

<b>YUV(219.9150, -4.3951, 9.7215)</b> .....	3
<b><i>Conversions</i></b> .....	4
<b><i>Details</i></b> .....	6
<b><i>Harmonies</i></b> .....	12
<b><i>Previews</i></b> .....	24
<b><i>Color Blindness Simulation</i></b> .....	28
<b><i>CSS Examples</i></b> .....	31

# Color

**YUV(219.9150, -4.3951,  
9.7215)**

# Conversions

## Conversions Part 1

<b>Format</b>	<b>Color</b>
Hex	E7D8D3
RGB	231, 216, 211
RGB Percent	91%, 85%, 83%
CMY	0.0941, 0.1529, 0.1725
CMYK	0.00, 0.06, 0.09, 0.09
HSL	15°, 29%, 87%
HSV	15°, 9%, 91%
XYZ	69.2687, 70.8038, 71.6437
YIQ	219.9150, 10.5450, 1.6250

# Conversions

## Conversions Part 2

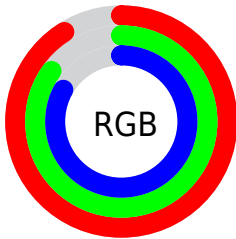
<b>Format</b>	<b>Color</b>
<b>R<sub>YB</sub></b>	231, 218, 211
Decimal	15194323
CIE Lab	87.39, 4.31, 4.30
CIE LCh	87, 6.091, 44.951
Yxy	70.8038, 0.3272, 0.3344
Android (android.graphics.Color)	4293384403 (0xFFE7D8D3)
YUV	219.9150, -4.3951, 9.7215
Hunter-Lab	84.1450, -0.3113, 8.4202

# Details

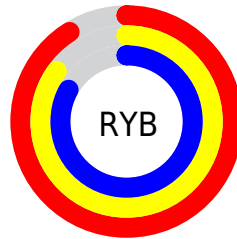
The YUV color  $219.9150, -4.3951, 9.7215$  is a light color, and the websafe version is hex `CCCCCC`. A complement of this color would be  $222.0850, 4.3951, -9.7215$ , and the grayscale version is  $220.0000, 0.0000, 0.0000$ .

A 20% lighter version of the original color is  $255.0000, 0.0000, 0.0000$ , and  $164.7300, -3.8109, 9.0068$  is the 20% darker color. If you saturate the color by 10%, you get  $207.3140, -9.5218, 20.7726$ , and if you desaturate by 10%, it is  $232.5160, 0.7316, -1.3295$ .

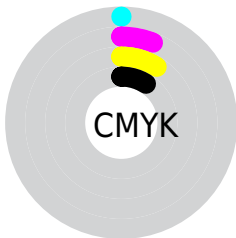
# Distribution



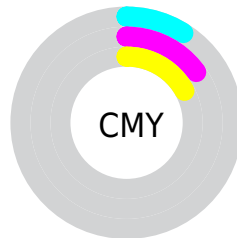
- Red (91%)
- Green (85%)
- Blue (83%)



- Red (91%)
- Yellow (85%)
- Blue (83%)



- Cyan (0%)
- Magenta (6%)
- Yellow (9%)
- Black (9%)



- Cyan (9%)
- Magenta (15%)
- Yellow (17%)

# Brightness & Saturation Gradients

These gradients show how the YUV color 219.9150, -4.3951, 9.7215 changes by changing the brightness by 10 percent. The first figure shows a shift by +10% for each color and the second figure -10%.

Similar to the brightness gradients but the following saturation gradients show a change of the YUV color 219.9150, -4.3951, 9.7215 by changing the saturation by 10% instead.



■ 219.9150, -4.3951,  
9.7215

■ 219.9150, -4.3951,  
9.7215

255.0000, 0.0000,  
0.0000

■ 191.9150, -4.3951,  
9.7215

■ 164.7300, -3.8109,  
9.0068

■ 138.6160, -4.2477,  
9.1068

■ 113.3170, -4.1003,  
8.4920

■ 88.4310, -3.6635,  
8.3920

■ 65.1320, -3.5161,  
7.7772

■ 42.9470, -2.9319,

7.0625

■ 22.5340, -3.2213,  
6.5477

■ 0.0000, 0.0000,  
0.0000

■ 219.9150, -4.3951,  
9.7215

■ 219.9150, -4.3951,  
9.7215

■ 207.3140, -9.5218,  
20.7726

■ 232.5160, 0.7316,  
-1.3295

■ 194.1260,  
-14.3591, 32.3385

■ 245.4760, 4.6953,  
-12.6955

■ 181.5250,  
-19.4858, 43.3896

■ 247.8240, 3.5378,  
-14.7546

■ 168.9240,  
-24.6125, 54.4407

■ 155.6220,  
-29.8866, 66.1065

■ 143.0210,  
-35.0134, 77.1576

■ 130.4200,  
-40.1401, 88.2087

■ 117.2320,  
-44.9774, 99.7745

■ 104.6310,  
-50.1041, 110.8256

# Harmonies

## Analogous

The Analogous color harmony consists of three colors that are next to each other on the color wheel.



220.1970, -2.0691, 10.3512



219.9150, -4.3951, 9.7215



219.5510, -5.6946, 6.5328

# Triad

The Triadic color harmony groups three colors that are evenly spaced from another and form a triangle on the color wheel.



219.9150, -4.3951, 9.7215



217.1300, -0.5571, -8.0070



219.0690, 5.3890, -1.8145

# Complementary

The Complementary color scheme is a pair of colors which are on the opposite of each other on the color wheel.



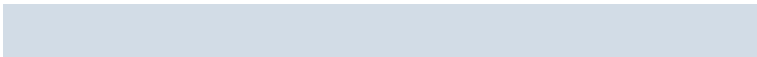
219.9150, -4.3951, 9.7215



222.0850, 4.3951, -9.7215

# Split Complementary

Split-complementary colors differ from the complementary color scheme. The scheme consists of three colors, the original color and two neighbors of the complement color.



218.1500, 5.8421, -7.1475



219.9150, -4.3951, 9.7215



217.5040, 2.2165, -10.9660

# Square

The Square scheme is like the rectangle color scheme, but the four colors are evenly spaced on the color wheel.



219.9150, -4.3951, 9.7215



217.7670, -3.3361, -3.3037



217.7860, 4.5425, -10.3363



220.2330, 3.3361, 3.3037



# Rectangle

The Rectangle color scheme consists of four colors that form a rectangle on the color wheel.



219.9150, -4.3951, 9.7215



218.9420, -5.3944, 3.5589



217.7860, 4.5425, -10.3363



218.7590, 5.5418, -4.1736

# Sweetspot

The Sweet Spot groups the original color and five complimentary colors.



219.9150, -4.3951, 9.7215



250.5660, -1.7580, 3.8886



218.6900, 3.6038, 10.7959



124.9680, -1.4632, 2.6591



0.0000, 0.0000, 0.0000



128.0000, 0.0000, 0.0000

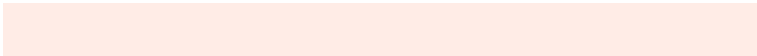


# Same Dimension

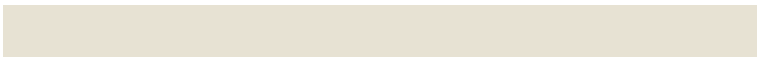
The Same Dimension uses a secret algorithm to generate beautiful new colors.



219.9150, -4.3951, 9.7215



240.9970, -5.4215, 12.2806



225.7850, -7.2890, 4.5736



108.3490, -2.6371, 5.8329



79.9360, -39.4084, 86.8791



22.8800, -11.2798, 24.6612

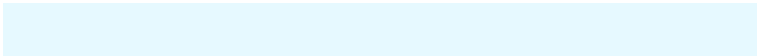


# Inverse Universe

The Inverse Universe completely reimagines the original color for something new.



222.0850, 4.3951, -9.7215



244.0030, 5.4215, -12.2806



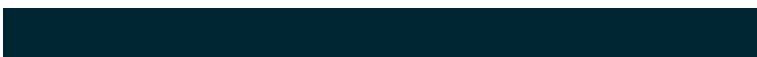
216.2150, 7.2890, -4.5736



109.6510, 2.6371, -5.8329



99.0640, 39.4084, -86.8791

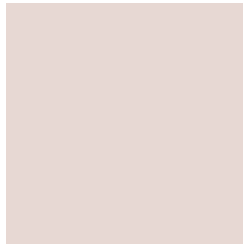


28.1200, 11.2798, -24.6612



# Previews

## White Background



This preview shows how the YUV color 219.9150, -4.3951, 9.7215 looks on a white background.

## Color Contrast Check

Large Text (above 18pt) WCAG AA × Fail

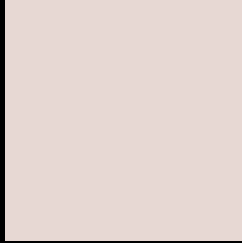
Any Text WCAG AA × Fail

Large Text (above 18pt) WCAG AAA × Fail

Any Text WCAG AAA × Fail



# Black Background



This preview shows how the YUV color 219.9150, -4.3951, 9.7215 looks on a black background.

## Color Contrast Check

Large Text (above 18pt) WCAG AA ✓ Pass

Any Text WCAG AA ✓ Pass

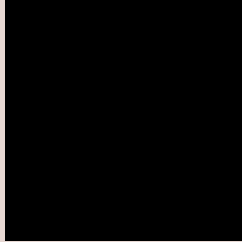
Large Text (above 18pt) WCAG AAA ✓ Pass

Any Text WCAG AAA ✓ Pass

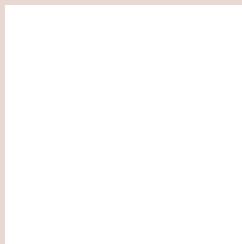
If you want to check with other color combinations, try the [Color Contrast Checker](#).

# YUV 219.9150, -4.3951, 9.7215

## Background



This preview shows how black text looks on a background with the YUV color 219.9150, -4.3951, 9.7215.



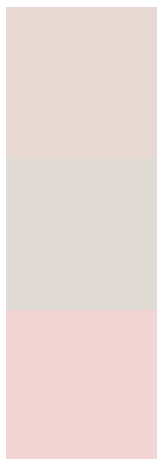
This preview shows how white text looks on a background with the YUV color 219.9150, -4.3951,

9.7215.

# Color Blindness Simulation

Color vision deficiency is a very complex topic, and I could not describe the different causes any better than Wikipedia does, so if you want to learn more, you should check out their [article about color blindness](#).

## Dichromacy



### Original Color

219.9150, -4.3951, 9.7215

### Protanopia

219.1100, -3.5052, 4.2885

### Deuteranopia

221.2690, -4.5696, 19.0581



## Tritanopia

221.2170, 4.3300, 11.2107

# Trichromacy



## Original Color

219.9150, -4.3951, 9.7215

## Protanomaly

219.4200, -3.6581, 6.6477

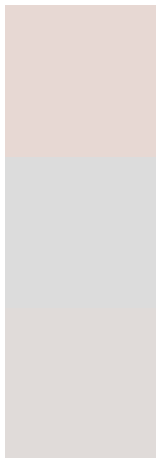
## Deuteranomaly

220.6600, -4.2694, 16.0842

## Tritanomaly

220.7070, 1.1304, 10.7810

# Monochromacy



## Original Color

219.9150, -4.3951, 9.7215

## Achromatopsia

220.0000, 0.0000, 0.0000

## Achromatomaly

220.2670, -1.6106, 3.2738

# CSS Examples

## Text

The CSS property to change the color of the text to YUV 219.9150, -4.3951, 9.7215 is called "color". The color property can be set on classes, ids or directly on the HTML element.

This example shows how text in the color `rgb(231, 216, 211)` looks like.

```
.text, #text, p{  
    color:rgb(231, 216, 211)  
}
```

If you want to add a text shadow in that color use the text-shadow property, you can generate a text shadow directly with our [CSS Text Shadow Generator](#).

Here you see how black text with a 4 pixel rgb(231, 216, 211) colored shadow looks like.

```
.shadow{ text-shadow: 4px 4px 2px rgb(231, 216, 211) }
```

## Border

The CSS property to change the border of an element to YUV 219.9150, -4.3951, 9.7215 is called "border". The border property can be set on classes, ids or directly on the HTML element.

This example shows the color as border, it can be applied via the CSS property "border" or "border-color".

```
.border, #border, table{ border:4px solid rgb(231, 216, 211) }
```



If only the border color should be changed use the property `border-color`.

```
.border{ border-color:rgb(231, 216, 211) }
```

If you want to add a box shadow in that color use:

Here you see how a box with a 4 pixel `rgb(231, 216, 211)` colored shadow looks like.

```
.boxshadow{ -moz-box-shadow:4px 4px 4px  
4px rgb(231, 216, 211); -webkit-box-  
shadow:4px 4px 4px 4px rgb(231, 216, 211);  
box-shadow:4px 4px 4px 4px rgb(231, 216,  
211) }
```

# Background

The CSS property to change the background color of an element to YUV 219.9150, -4.3951, 9.7215 is called "background". The background property can be set on classes, ids or directly on the HTML element.

```
.background, #background, body{  
background: rgb(231, 216, 211) }
```

If only the background color should be changed can be used:

```
.background{ background-color: rgb(231,  
216, 211) }
```

This example shows the color as background, it is applied via the CSS property "background".

To optimize and compress your CSS code, you can use our [online CSS compressor and optimizer](#) based on csstidy. If you want to create a linear or radial gradient as background or border, check our [CSS Gradient Generator](#).

Hey! You found this booklet interesting? Support Converting Colors with the new Membership Option!

The pro membership hides all ads, plus gives you double the colors in the color bucket, and more awesome pro features!

**[Learn more, Memberships starting at \\$2.50/m!](#)**

**Follow me  
on Twitter!**

@ConvertingColor