

Converting Colors

YUV(22.2250, -1.0969, 25.2357)

Have a look what the booklet for
YUV(22.2250, -1.0969, 25.2357)
contains.

YUV(22.2250, -1.0969, 25.2357)	3
<i>Conversions</i>	4
<i>Details</i>	6
<i>Harmonies</i>	12
<i>Previews</i>	24
<i>Color Blindness Simulation</i>	28
<i>CSS Examples</i>	31

Color

**YUV(22.2250, -1.0969,
25.2357)**

Conversions

Conversions Part 1

Format	Color
Hex	330814
RGB	51, 8, 20
RGB Percent	20%, 3%, 8%
CMY	0.8000, 0.9686, 0.9216
CMYK	0.00, 0.84, 0.61, 0.80
HSL	343°, 73%, 12%
HSV	343°, 84%, 20%
XYZ	1.5783, 0.9280, 0.7578
YIQ	22.2250, 21.7760, 12.8480

Conversions

Conversions Part 2

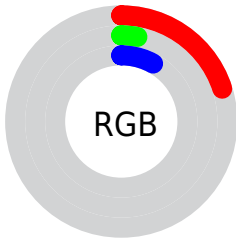
Format	Color
RYB	51, 8, 20
Decimal	3344404
CIELab	8.38, 22.49, 3.60
CIELCh	8, 22.779, 9.103
Yxy	0.9280, 0.4835, 0.2843
Android (android.graphics.Color)	4281534484 (0xFF330814)
YUV	22.2250, -1.0969, 25.2357
Hunter-Lab	9.6332, 12.3882, 2.0794

Details

The YUV color **22.2250, -1.0969, 25.2357** is a dark color, and the websafe version is hex **330000**. A complement of this color would be **36.7750, 1.0969, -25.2357**, and the grayscale version is **22.0000, 0.0000, 0.0000**.

A 20% lighter version of the original color is **68.0790, -2.9969, 27.9947**, and **0.0000, 0.0000, 0.0000** is the 20% darker color. If you saturate the color by 10%, you get **18.8340, -1.3972, 28.2096**, and if you desaturate by 10%, it is **25.6160, -0.7967, 22.2618**.

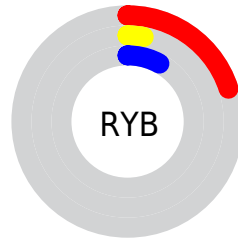
Distribution



Red (20%)

Green (3%)

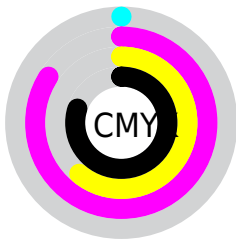
Blue (8%)



Red (20%)

Yellow (3%)

Blue (8%)

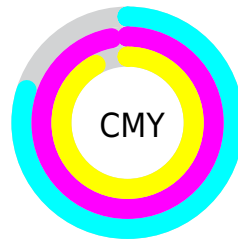


Cyan (0%)

Magenta (84%)

Yellow (61%)

Black (80%)



Cyan (80%)

Magenta (97%)

Yellow (92%)

Brightness & Saturation Gradients

These gradients show how the YUV color 22.2250, -1.0969, 25.2357 changes by changing the brightness by 10 percent. The first figure shows a shift by +10% for each color and the second figure -10%.

Similar to the brightness gradients but the following saturation gradients show a change of the YUV color 22.2250, -1.0969, 25.2357 by changing the saturation by 10% instead.

■ 22.2250, -1.0969,
25.2357

■ 22.2250, -1.0969,
25.2357

■ 242.0060, 0.9830,
11.3957

■ 8.7850, -3.8380,
17.7286

■ 68.0790, -2.9969,
27.9947

■ 0.0000, 0.0000,
0.0000

■ 91.9760, -3.4392,
29.8390

■ 116.9870, -3.4446,
31.5834

■ 143.1720, -4.0288,
32.2982

■ 169.7700, -4.3236,
33.5277

■ 197.3680, -4.6184,

34.7573

■ 222.3780, -3.1444,
28.6095

■ 22.2250, -1.0969,
25.2357

■ 22.2250, -1.0969,
25.2357

■ 18.8340, -1.3972,
28.2096

■ 25.6160, -0.7967,
22.2618

■ 16.8450, -1.4026,
29.9539

■ 28.8930, -0.9332,
19.3878

■ 32.2840, -0.6330,
16.4139

■ 35.6750, -0.3328,
13.4400

■ 39.5390, -0.7587,
10.0513

■ 42.9300, -0.4585,
7.0774

■ 46.3210, -0.1583,
4.1035

■ 49.5980, -0.2948,
1.2296

■ 52.9890, 0.0054,
-1.7444

Harmonies

Analogous

The Analogous color harmony consists of three colors that are next to each other on the color wheel.



24.2010, 5.3239, 19.1177



22.2250, -1.0969, 25.2357



21.6950, -10.6956, 23.9465

Triad

The Triadic color harmony groups three colors that are evenly spaced from another and form a triangle on the color wheel.



22.2250, -1.0969, 25.2357



20.0130, -9.8664, -8.7814



23.0650, 14.7580, -20.2280

Complementary

The Complementary color scheme is a pair of colors which are on the opposite of each other on the color wheel.



22.2250, -1.0969, 25.2357



36.7750, 1.0969, -25.2357

Split Complementary

Split-complementary colors differ from the complementary color scheme. The scheme consists of three colors, the original color and two neighbors of the complement color.



23.0990, 9.8112, -20.2578



22.2250, -1.0969, 25.2357



19.9240, -4.8925, -17.4733

Square

The Square scheme is like the rectangle color scheme, but the four colors are evenly spaced on the color wheel.



22.2250, -1.0969, 25.2357



23.0470, -11.3622, 4.3438



22.0900, 3.4066, -19.3729



20.8310, 16.3523, -18.2688

Rectangle

The Rectangle color scheme consists of four colors that form a rectangle on the color wheel.



22.2250, -1.0969, 25.2357



23.1350, -11.4056, 18.2986



22.0900, 3.4066, -19.3729



23.3100, 13.1582, -20.4429

Sweetspot

The Sweet Spot groups the original color and five complimentary colors.



22.2250, -1.0969, 25.2357



55.2400, -0.6113, 9.4365



22.1710, 14.2127, 14.7590



26.3320, -0.1637, 5.8478



161.0000, 0.0000, 0.0000



33.0000, 0.0000, 0.0000

Same Dimension

The Same Dimension uses a secret algorithm to generate beautiful new colors.



22.2250, -1.0969, 25.2357



21.9000, -1.4297, 38.6757



26.1400, -8.9430, 21.8022



24.0110, -0.0054, 1.7444



29.4610, -2.1993, 52.2157



71.7230, -5.7794, 127.4079

Inverse Universe

The Inverse Universe completely reimagines the original color for something new.



22.2250, -1.0969, 25.2357



21.9000, -1.4297, 38.6757



32.8600, 8.9430, -21.8022



24.0110, -0.0054, 1.7444



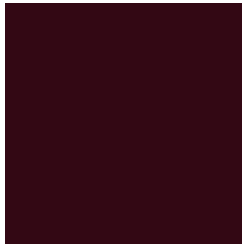
29.4610, -2.1993, 52.2157



71.7230, -5.7794, 127.4079

Previews

White Background



This preview shows how the YUV color 22.2250, -1.0969, 25.2357 looks on a white background.

Color Contrast Check

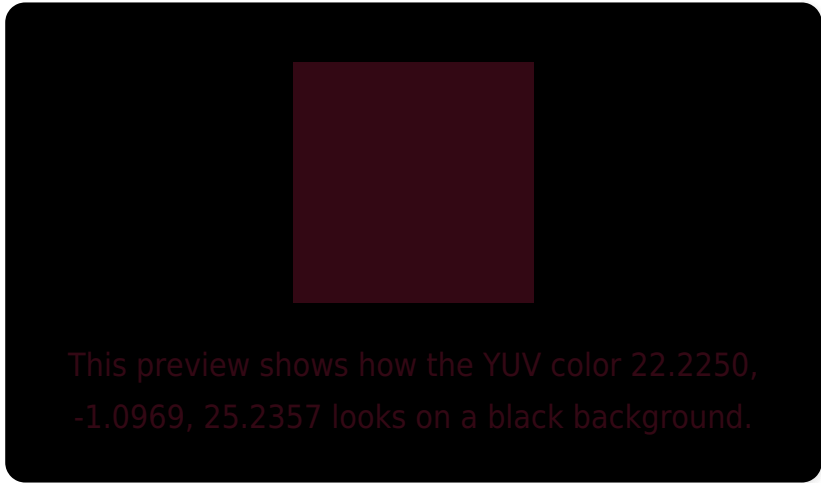
Large Text (above 18pt) WCAG AA ✓ Pass

Any Text WCAG AA ✓ Pass

Large Text (above 18pt) WCAG AAA ✓ Pass

Any Text WCAG AAA ✓ Pass

Black Background



Color Contrast Check

Large Text (above 18pt) WCAG AA × Fail

Any Text WCAG AA × Fail

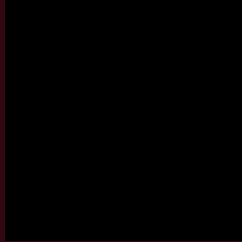
Large Text (above 18pt) WCAG AAA × Fail

Any Text WCAG AAA × Fail

If you want to check with other color combinations, try the [Color Contrast Checker](#).

YUV 22.2250, -1.0969, 25.2357

Background



This preview shows how black text looks on a background with the YUV color 22.2250, -1.0969, 25.2357.



This preview shows how white text looks on a background with the YUV color 22.2250, -1.0969,

Color Blindness Simulation

Color vision deficiency is a very complex topic, and I could not describe the different causes any better than Wikipedia does, so if you want to learn more, you should check out their [article about color blindness](#).

Dichromacy



Original Color

22.2250, -1.0969, 25.2357

Protanopia

27.1140, 0.4368, -0.1000

Deuteranopia

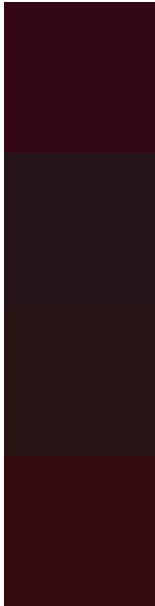
26.8820, -4.3788, 4.4885



Tritanopia

22.9600, -5.8963, 24.5911

Trichromacy



Original Color

22.2250, -1.0969, 25.2357

Protanomaly

25.3540, -0.1745, 9.3365

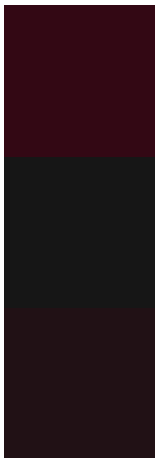
Deuteranomaly

24.9800, -2.9481, 12.2955

Tritanomaly

22.7150, -4.2965, 24.8059

Monochromacy



Original Color

22.2250, -1.0969, 25.2357

Achromatopsia

22.0000, 0.0000, 0.0000

Achromatomaly

22.2400, -0.6113, 9.4365

CSS Examples

Text

The CSS property to change the color of the text to YUV 22.2250, -1.0969, 25.2357 is called "color". The color property can be set on classes, ids or directly on the HTML element.

This example shows how text in the color `rgb(51, 8, 20)` looks like.

```
.text, #text, p{  
    color:rgb(51, 8, 20)  
}
```

If you want to add a text shadow in that color use the text-shadow property, you can generate a text shadow directly with our [CSS Text Shadow Generator](#).

Here you see how black text with a 4 pixel rgb(51, 8, 20) colored shadow looks like.

```
.shadow{ text-shadow: 4px 4px 2px rgb(51, 8, 20) }
```

Border

The CSS property to change the border of an element to YUV 22.2250, -1.0969, 25.2357 is called "border". The border property can be set on classes, ids or directly on the HTML element.

This example shows the color as border, it can be applied via the CSS property "border" or "border-color".

```
.border, #border, table{ border:4px solid rgb(51, 8, 20) }
```


If only the border color should be changed use the property `border-color`.

```
.border{ border-color:rgb(51, 8, 20) }
```

If you want to add a box shadow in that color use:

Here you see how a box with a 4 pixel `rgb(51, 8, 20)` colored shadow looks like.

```
.boxshadow{ -moz-box-shadow:4px 4px 4px  
4px rgb(51, 8, 20); -webkit-box-shadow:4px  
4px 4px 4px rgb(51, 8, 20); box-shadow:4px  
4px 4px 4px rgb(51, 8, 20) }
```

Background

The CSS property to change the background color of an element to YUV 22.2250, -1.0969, 25.2357 is called "background". The background property can be set on classes, ids or directly on the HTML element.

```
.background, #background, body{  
background: rgb(51, 8, 20) }
```

If only the background color should be changed can be used:

```
.background{ background-color: rgb(51, 8,  
20) }
```

This example shows the color as background, it is applied via the CSS property "background".

To optimize and compress your CSS code, you can use our [online CSS compressor and optimizer](#) based on csstidy. If you want to create a linear or radial gradient as background or border, check our [CSS Gradient Generator](#).

Hey! You found this booklet interesting? Support Converting Colors with the new Membership Option!

The pro membership hides all ads, plus gives you double the colors in the color bucket, and more awesome pro features!

[Learn more, Memberships starting at \\$2.50/m!](#)

**Follow me
on Twitter!**

@ConvertingColor