

# Converting Colors

YUV(220.7540, -10.2317,  
15.1247)

Have a look what the booklet for  
YUV(220.7540, -10.2317, 15.1247)  
contains.

<b>YUV(220.7540, -10.2317, 15.1247)</b> .....	3
<b><i>Conversions</i></b> .....	4
<b><i>Details</i></b> .....	6
<b><i>Harmonies</i></b> .....	12
<b><i>Previews</i></b> .....	24
<b><i>Color Blindness Simulation</i></b> .....	28
<b><i>CSS Examples</i></b> .....	31

# Color

**YUV(220.7540, -10.2317,  
15.1247)**

# Conversions

## Conversions Part 1

Format	Color
Hex	EED8C8
RGB	238, 216, 200
RGB Percent	93%, 85%, 78%
CMY	0.0667, 0.1529, 0.2157
CMYK	0.00, 0.09, 0.16, 0.07
HSL	25°, 53%, 86%
HSV	25°, 16%, 93%
XYZ	70.2411, 71.4590, 64.7344
YIQ	220.7540, 18.2480, -0.3120

# Conversions

## Conversions Part 2

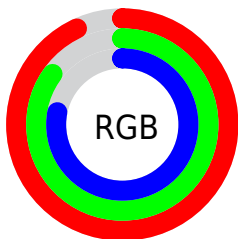
<b>Format</b>	<b>Color</b>
R <sub>Y</sub> B	238, 228, 200
Decimal	15653064
CIE Lab	87.71, 5.04, 10.63
CIE LCh	88, 11.766, 64.658
Yxy	71.4590, 0.3403, 0.3462
Android (android.graphics.Color)	4293843144 (0xFFEED8C8)
YUV	220.7540, -10.2317, 15.1247
Hunter-Lab	84.5334, 0.3869, 13.7700

# Details

The YUV color  $220.7540, -10.2317, 15.1247$  is a light color, and the websafe version is hex  $CCCCCC$ . A complement of this color would be  $217.2460, 10.2317, -15.1247$ , and the grayscale version is  $221.0000, 0.0000, 0.0000$ .

A 20% lighter version of the original color is  $255.0000, 0.0000, 0.0000$ , and  $165.5690, -9.6475, 14.4100$  is the 20% darker color. If you saturate the color by 10%, you get  $209.8000, -16.6634, 24.7314$ , and if you desaturate by 10%, it is  $231.7080, -3.8000, 5.5181$ .

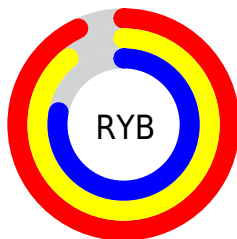
# Distribution



Red (93%)

Green (85%)

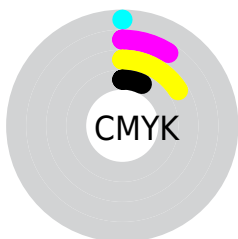
Blue (78%)



Red (93%)

Yellow (89%)

Blue (78%)

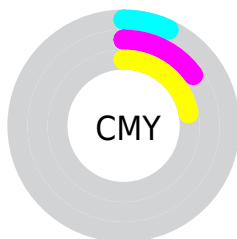


Cyan (0%)

Magenta (9%)

Yellow (16%)

Black (7%)



Cyan (7%)

Magenta (15%)

Yellow (22%)

# Brightness & Saturation Gradients

These gradients show how the YUV color 220.7540, -10.2317, 15.1247 changes by changing the brightness by 10 percent. The first figure shows a shift by +10% for each color and the second figure -10%.

Similar to the brightness gradients but the following saturation gradients show a change of the YUV color 220.7540, -10.2317, 15.1247 by changing the saturation by 10% instead.



■ 220.7540,  
-10.2317, 15.1247

■ 220.7540,  
-10.2317, 15.1247

255.0000, 0.0000,  
0.0000

■ 192.8680, -9.7949,  
15.0248

■ 165.5690, -9.6475,  
14.4100

■ 139.2700, -9.5001,  
13.7952

■ 114.0850, -8.9159,  
13.0805

■ 88.9000, -8.3317,  
12.3657

■ 65.6010, -8.1843,  
11.7509

■ 43.1170, -7.4527,

10.4214

■ 22.1340, -9.9261,  
10.4065

■ 0.0000, 0.0000,  
0.0000

■ 220.7540,  
-10.2317, 15.1247

■ 220.7540,  
-10.2317, 15.1247

■ 209.8000,  
-16.6634, 24.7314

■ 231.7080, -3.8000,  
5.5181

■ 198.8460,  
-23.0951, 34.3381

■ 242.6620, 2.6316,  
-4.0886

■ 188.5930,  
-29.3793, 43.3299

■ 249.9170, 2.5059,  
-10.4512

■ 177.6390,  
-35.8110, 52.9366

■ 166.6850,  
-42.2427, 62.5433

■ 155.7310,  
-48.6744, 72.1499

■ 145.3640,  
-55.3955, 81.2418

■ 134.5240,  
-61.3903, 90.7485

■ 129.8620,  
-64.0220, 94.8370

# Harmonies

## Analogous

The Analogous color harmony consists of three colors that are next to each other on the color wheel.



221.6990, -6.7536, 19.5580



220.7540, -10.2317, 15.1247



219.5850, -10.6414, 6.5030

# Triad

The Triadic color harmony groups three colors that are evenly spaced from another and form a triangle on the color wheel.



220.7540, -10.2317, 15.1247



216.4490, 2.2436, -19.6878



220.9000, 8.4303, 2.7187

# Complementary

The Complementary color scheme is a pair of colors which are on the opposite of each other on the color wheel.



220.7540, -10.2317, 15.1247



217.2460, 10.2317, -15.1247

# Split Complementary

Split-complementary colors differ from the complementary color scheme. The scheme consists of three colors, the original color and two neighbors of the complement color.



219.5180, 11.0836, -8.3473



220.7540, -10.2317, 15.1247



216.5180, 7.6326, -21.5023

# Square

The Square scheme is like the rectangle color scheme, but the four colors are evenly spaced on the color wheel.



220.7540, -10.2317, 15.1247



217.0000, -3.4510, -13.1550



218.0500, 10.8213, -17.5839



222.4020, 3.7458, 11.9254



# Rectangle

The Rectangle color scheme consists of four colors that form a rectangle on the color wheel.



220.7540, -10.2317, 15.1247



218.4810, -9.6041, 0.4552



218.0500, 10.8213, -17.5839



221.1060, 9.3147, -0.9700

# Sweetspot

The Sweet Spot groups the original color and five complimentary colors.



220.7540, -10.2317, 15.1247



249.4090, -3.6526, 4.9033



213.8700, 4.0081, 21.1620



124.1530, -2.0474, 3.3738



0.0000, 0.0000, 0.0000



128.0000, 0.0000, 0.0000

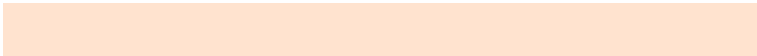


# Same Dimension

The Same Dimension uses a secret algorithm to generate beautiful new colors.



220.7540, -10.2317, 15.1247



233.0920, -12.8634, 19.2133



231.9070, -15.7302, 5.3436



114.5230, -3.2158, 4.8033



100.2150, -49.4060, 73.4794



30.8320, -15.2002, 22.0723

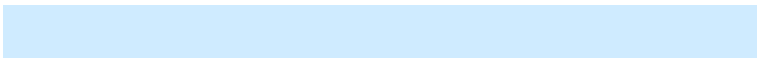


# Inverse Universe

The Inverse Universe completely reimagines the original color for something new.



217.2460, 10.2317, -15.1247



228.9080, 12.8634, -19.2133



206.0930, 15.7302, -5.3436



113.4770, 3.2158, -4.8033



83.1980, 49.6954, -72.9646

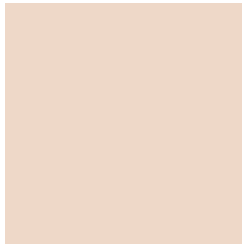


25.1680, 15.2002, -22.0723



# Previews

## White Background



This preview shows how the YUV color 220.7540, -10.2317, 15.1247 looks on a white background.

## Color Contrast Check

Large Text (above 18pt) WCAG AA × Fail

Any Text WCAG AA × Fail

Large Text (above 18pt) WCAG AAA × Fail

Any Text WCAG AAA × Fail



# Black Background



This preview shows how the YUV color 220.7540, -10.2317, 15.1247 looks on a black background.

## Color Contrast Check

Large Text (above 18pt) WCAG AA ✓ Pass

Any Text WCAG AA ✓ Pass

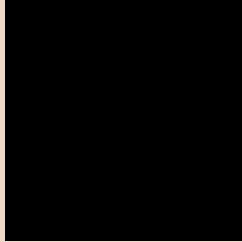
Large Text (above 18pt) WCAG AAA ✓ Pass

Any Text WCAG AAA ✓ Pass

If you want to check with other color combinations, try the [Color Contrast Checker](#).

# YUV 220.7540, -10.2317, 15.1247

## Background



This preview shows how black text looks on a background with the YUV color 220.7540, -10.2317, 15.1247.



This preview shows how white text looks on a background with the YUV color 220.7540, -10.2317, 15.1247.



# Color Blindness Simulation

Color vision deficiency is a very complex topic, and I could not describe the different causes any better than Wikipedia does, so if you want to learn more, you should check out their [article about color blindness](#).

## Dichromacy



### Original Color

220.7540, -10.2317, 15.1247

### Protanopia

219.7530, -8.7522, 7.2326

### Deuteranopia

221.5100, -10.1114, 23.2317



## Tritanopia

222.7940, 2.5666, 16.8437

# Trichromacy



## Original Color

220.7540, -10.2317, 15.1247

## Protanomaly

220.2480, -9.4893, 10.3065

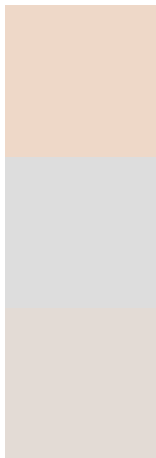
## Deuteranomaly

220.9010, -9.8112, 20.2578

## Tritanomaly

221.9420, -1.9434, 16.7139

# Monochromacy



## Original Color

220.7540, -10.2317, 15.1247

## Achromatopsia

221.0000, 0.0000, 0.0000

## Achromatomaly

220.7080, -3.8000, 5.5181

# CSS Examples

## Text

The CSS property to change the color of the text to YUV 220.7540, -10.2317, 15.1247 is called "color". The color property can be set on classes, ids or directly on the HTML element.

This example shows how text in the color `rgb(238, 216, 200)` looks like.

```
.text, #text, p{  
    color:rgb(238, 216, 200)  
}
```

If you want to add a text shadow in that color use the text-shadow property, you can generate a text shadow directly with our [CSS Text Shadow Generator](#).

Here you see how black text with a 4 pixel rgb(238, 216, 200) colored shadow looks like.

```
.shadow{ text-shadow: 4px 4px 2px rgb(238, 216, 200) }
```

## Border

The CSS property to change the border of an element to YUV 220.7540, -10.2317, 15.1247 is called "border".

The border property can be set on classes, ids or directly on the HTML element.

This example shows the color as border, it can be applied via the CSS property "border" or "border-color".

```
.border, #border, table{ border:4px solid rgb(238, 216, 200) }
```



If only the border color should be changed use the property `border-color`.

```
.border{ border-color:rgb(238, 216, 200) }
```

If you want to add a box shadow in that color use:

Here you see how a box with a 4 pixel `rgb(238, 216, 200)` colored shadow looks like.

```
.boxshadow{ -moz-box-shadow:4px 4px 4px  
4px rgb(238, 216, 200); -webkit-box-  
shadow:4px 4px 4px 4px rgb(238, 216, 200);  
box-shadow:4px 4px 4px 4px rgb(238, 216,  
200) }
```

# Background

The CSS property to change the background color of an element to YUV 220.7540, -10.2317, 15.1247 is called "background". The background property can be set on classes, ids or directly on the HTML element.

```
.background, #background, body{  
background: rgb(238, 216, 200) }
```

If only the background color should be changed can be used:

```
.background{ background-color: rgb(238,  
216, 200) }
```

This example shows the color as background, it is applied via the CSS property "background".

To optimize and compress your CSS code, you can use our [online CSS compressor and optimizer](#) based on csstidy. If you want to create a linear or radial gradient as background or border, check our [CSS Gradient Generator](#).

Hey! You found this booklet interesting? Support Converting Colors with the new Membership Option!

The pro membership hides all ads, plus gives you double the colors in the color bucket, and more awesome pro features!

**[Learn more, Memberships starting at \\$2.50/m!](#)**

**Follow me  
on Twitter!**

@ConvertingColor