

Converting Colors

YUV(220.8770, -3.3904,
14.1399)

Have a look what the booklet for
YUV(220.8770, -3.3904, 14.1399)
contains.

YUV(220.8770, -3.3904, 14.1399)	3
<i>Conversions</i>	4
<i>Details</i>	6
<i>Harmonies</i>	12
<i>Previews</i>	24
<i>Color Blindness Simulation</i>	28
<i>CSS Examples</i>	31

Color

**YUV(220.8770, -3.3904,
14.1399)**

Conversions

Conversions Part 1

Format	Color
Hex	EDD6D6
RGB	237, 214, 214
RGB Percent	93%, 84%, 84%
CMY	0.0706, 0.1608, 0.1608
CMYK	0.00, 0.10, 0.10, 0.07
HSL	0°, 39%, 88%
HSV	0°, 10%, 93%
XYZ	71.1092, 70.9527, 73.5657
YIQ	220.8770, 13.7080, 4.8760

Conversions

Conversions Part 2

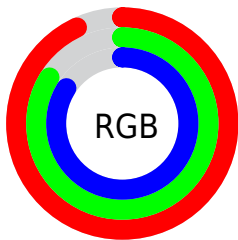
Format	Color
RYB	237, 214, 214
Decimal	15587030
CIELab	87.46, 7.95, 2.89
CIELCh	87, 8.457, 19.956
Yxy	70.9527, 0.3298, 0.3291
Android (android.graphics.Color)	4293777110 (0xFFEDD6D6)
YUV	220.8770, -3.3904, 14.1399
Hunter-Lab	84.2334, 3.2799, 7.1822

Details

The YUV color $220.8770, -3.3904, 14.1399$ is a light color, and the websafe version is hex `CCCCCC`. A complement of this color would be $230.1230, 3.3904, -14.1399$, and the grayscale version is $221.0000, 0.0000, 0.0000$.

A 20% lighter version of the original color is $255.0000, 0.0000, 0.0000$, and $165.5780, -3.2430, 13.5251$ is the 20% darker color. If you saturate the color by 10%, you get $204.0530, -6.9281, 28.8945$, and if you desaturate by 10%, it is $237.7010, 0.1474, -0.6148$.

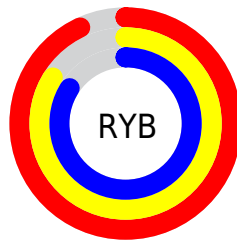
Distribution



Red (93%)

Green (84%)

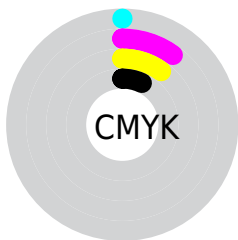
Blue (84%)



Red (93%)

Yellow (84%)

Blue (84%)

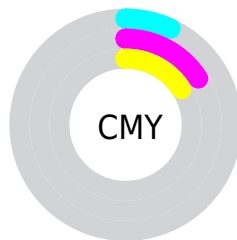


Cyan (0%)

Magenta (10%)

Yellow (10%)

Black (7%)



Cyan (7%)

Magenta (16%)

Yellow (16%)

Brightness & Saturation Gradients

These gradients show how the YUV color 220.8770, -3.3904, 14.1399 changes by changing the brightness by 10 percent. The first figure shows a shift by +10% for each color and the second figure -10%.

Similar to the brightness gradients but the following saturation gradients show a change of the YUV color 220.8770, -3.3904, 14.1399 by changing the saturation by 10% instead.

■ 220.8770, -3.3904,
14.1399

■ 220.8770, -3.3904,
14.1399

255.0000, 0.0000,
0.0000

■ 192.8770, -3.3904,
14.1399

■ 165.5780, -3.2430,
13.5251

■ 139.2790, -3.0955,
12.9103

■ 113.9800, -2.9481,
12.2955

■ 89.6810, -2.8007,
11.6808

■ 65.7950, -2.3639,
11.5808

■ 43.7840, -2.3585,

9.8364

■ 22.7840, -2.3585,
9.8364

■ 0.0000, 0.0000,
0.0000

■ 220.8770, -3.3904,
14.1399

■ 220.8770, -3.3904,
14.1399

■ 204.0530, -6.9281,
28.8945

■ 237.7010, 0.1474,
-0.6148

■ 187.9300,
-10.3185, 43.0344

■ 249.6180, 2.6533,
-11.0660

■ 171.1060,
-13.8563, 57.7890

■ 154.2820,
-17.3940, 72.5437

■ 137.4580,
-20.9318, 87.2983

■ 121.3350,
-24.3222, 101.4382

■ 104.5110,
-27.8599, 116.1929

■ 87.6870, -31.3977,
130.9475

■ 71.5640, -34.7881,
145.0874

Harmonies

Analogous

The Analogous color harmony consists of three colors that are next to each other on the color wheel.



220.8920, 0.5462, 11.4957



220.8770, -3.3904, 14.1399



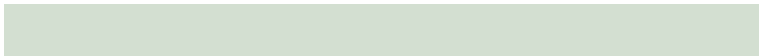
220.0680, -6.4425, 13.0954

Triad

The Triadic color harmony groups three colors that are evenly spaced from another and form a triangle on the color wheel.



220.8770, -3.3904, 14.1399



217.8160, -4.3463, -5.9776



218.7090, 8.0315, -9.3918

Complementary

The Complementary color scheme is a pair of colors which are on the opposite of each other on the color wheel.



220.8770, -3.3904, 14.1399



230.1230, 3.3904, -14.1399

Split Complementary

Split-complementary colors differ from the complementary color scheme. The scheme consists of three colors, the original color and two neighbors of the complement color.



217.3340, 6.7373, -14.3249



220.8770, -3.3904, 14.1399



216.8090, -0.3988, -12.1105

Square

The Square scheme is like the rectangle color scheme, but the four colors are evenly spaced on the color wheel.



220.8770, -3.3904, 14.1399



218.1760, -6.9888, 1.5996



216.8240, 3.5378, -14.7546



219.8240, 6.9888, -1.5996

Rectangle

The Rectangle color scheme consists of four colors that form a rectangle on the color wheel.



220.8770, -3.3904, 14.1399



219.7040, -7.7421, 9.9066



216.8240, 3.5378, -14.7546



217.6980, 8.0369, -11.1361

Sweetspot

The Sweet Spot groups the original color and five complimentary colors.



220.8770, -3.3904, 14.1399



249.3920, -1.1793, 4.9182



223.4990, 6.6560, 11.8404



123.7940, -0.8844, 3.6887



0.0000, 0.0000, 0.0000



128.0000, 0.0000, 0.0000

Same Dimension

The Same Dimension uses a secret algorithm to generate beautiful new colors.



220.8770, -3.3904, 14.1399



233.2690, -4.5696, 19.0581



227.9210, -6.8631, 7.9623



109.2890, -1.6215, 6.7625



54.1190, -26.6807, 111.2746



16.1460, -7.9600, 33.1980

Inverse Universe

The Inverse Universe completely reimagines the original color for something new.



230.1230, 3.3904, -14.1399



245.7310, 4.5696, -19.0581



223.6660, 6.5737, -8.4771



113.7110, 1.6215, -6.7625



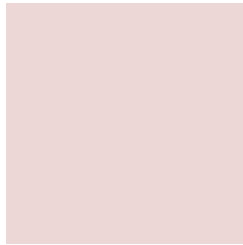
126.8810, 26.6807, -111.2746



37.8540, 7.9600, -33.1980

Previews

White Background



This preview shows how the YUV color 220.8770, -3.3904, 14.1399 looks on a white background.

Color Contrast Check

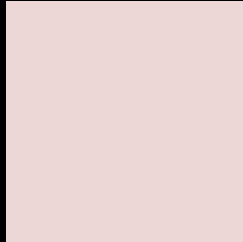
Large Text (above 18pt) WCAG AA × Fail

Any Text WCAG AA × Fail

Large Text (above 18pt) WCAG AAA × Fail

Any Text WCAG AAA × Fail

Black Background



This preview shows how the YUV color 220.8770, -3.3904, 14.1399 looks on a black background.

Color Contrast Check

Large Text (above 18pt) WCAG AA ✓ Pass

Any Text WCAG AA ✓ Pass

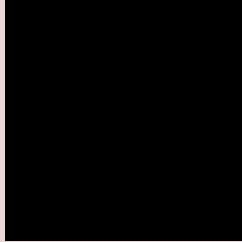
Large Text (above 18pt) WCAG AAA ✓ Pass

Any Text WCAG AAA ✓ Pass

If you want to check with other color combinations, try the [Color Contrast Checker](#).

YUV 220.8770, -3.3904, 14.1399

Background



This preview shows how black text looks on a background with the YUV color 220.8770, -3.3904, 14.1399.

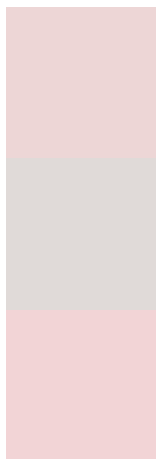


This preview shows how white text looks on a background with the YUV color 220.8770, -3.3904,

Color Blindness Simulation

Color vision deficiency is a very complex topic, and I could not describe the different causes any better than Wikipedia does, so if you want to learn more, you should check out their [article about color blindness](#).

Dichromacy



Original Color

220.8770, -3.3904, 14.1399

Protanopia

219.5660, -1.7580, 3.8886

Deuteranopia

221.1980, -3.5486, 18.2434



Tritanopia

221.8970, 3.0088, 14.9993

Trichromacy



Original Color

220.8770, -3.3904, 14.1399

Protanomaly

220.3600, -2.6425, 7.5773

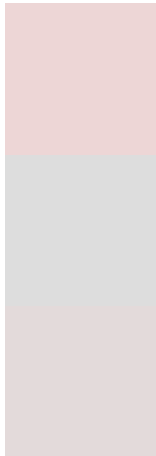
Deuteranomaly

221.1870, -3.5432, 16.4990

Tritanomaly

221.6150, 0.6828, 14.3696

Monochromacy



Original Color

220.8770, -3.3904, 14.1399

Achromatopsia

221.0000, 0.0000, 0.0000

Achromatomaly

220.6910, -1.3267, 5.5330

CSS Examples

Text

The CSS property to change the color of the text to YUV 220.8770, -3.3904, 14.1399 is called "color". The color property can be set on classes, ids or directly on the HTML element.

This example shows how text in the color `rgb(237, 214, 214)` looks like.

```
.text, #text, p{  
    color:rgb(237, 214, 214)  
}
```

If you want to add a text shadow in that color use the text-shadow property, you can generate a text shadow directly with our [CSS Text Shadow Generator](#).

Here you see how black text with a 4 pixel rgb(237, 214, 214) colored shadow looks like.

```
.shadow{ text-shadow: 4px 4px 2px rgb(237, 214, 214) }
```

Border

The CSS property to change the border of an element to YUV 220.8770, -3.3904, 14.1399 is called "border". The border property can be set on classes, ids or directly on the HTML element.

This example shows the color as border, it can be applied via the CSS property "border" or "border-color".

```
.border, #border, table{ border:4px solid rgb(237, 214, 214) }
```


If only the border color should be changed use the property border-color.

```
.border{ border-color:rgb(237, 214, 214) }
```

If you want to add a box shadow in that color use:

Here you see how a box with a 4 pixel rgb(237, 214, 214) colored shadow looks like.

```
.boxshadow{ -moz-box-shadow:4px 4px 4px  
4px rgb(237, 214, 214); -webkit-box-  
shadow:4px 4px 4px 4px rgb(237, 214, 214);  
box-shadow:4px 4px 4px 4px rgb(237, 214,  
214) }
```

Background

The CSS property to change the background color of an element to YUV 220.8770, -3.3904, 14.1399 is called "background". The background property can be set on classes, ids or directly on the HTML element.

```
.background, #background, body{  
background: rgb(237, 214, 214) }
```

If only the background color should be changed can be used:

```
.background{ background-color: rgb(237,  
214, 214) }
```

This example shows the color as background, it is applied via the CSS property "background".

To optimize and compress your CSS code, you can use our [online CSS compressor and optimizer](#) based on csstidy. If you want to create a linear or radial gradient as background or border, check our [CSS Gradient Generator](#).

Hey! You found this booklet interesting? Support Converting Colors with the new Membership Option!

The pro membership hides all ads, plus gives you double the colors in the color bucket, and more awesome pro features!

[Learn more, Memberships starting at \\$2.50/m!](#)

**Follow me
on Twitter!**

@ConvertingColor