

Converting Colors

YUV(221.1430, -3.5215, 9.5216)

Have a look what the booklet for
YUV(221.1430, -3.5215, 9.5216)
contains.

YUV(221.1430, -3.5215, 9.5216)	3
<i>Conversions</i>	4
<i>Details</i>	6
<i>Harmonies</i>	12
<i>Previews</i>	24
<i>Color Blindness Simulation</i>	28
<i>CSS Examples</i>	31

Color

**YUV(221.1430, -3.5215,
9.5216)**

Conversions

Conversions Part 1

Format	Color
Hex	E8D9D6
RGB	232, 217, 214
RGB Percent	91%, 85%, 84%
CMY	0.0902, 0.1490, 0.1608
CMYK	0.00, 0.06, 0.08, 0.09
HSL	10°, 28%, 87%
HSV	10°, 8%, 91%
XYZ	70.2292, 71.6366, 73.7441
YIQ	221.1430, 9.9030, 2.2470

Conversions

Conversions Part 2

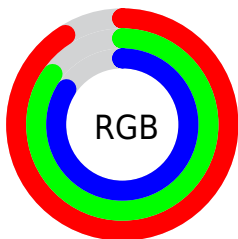
Format	Color
R _Y B	232, 218, 214
Decimal	15260118
CIE Lab	87.79, 4.64, 3.32
CIE LCh	88, 5.703, 35.548
Yxy	71.6366, 0.3257, 0.3323
Android (android.graphics.Color)	4293450198 (0xFFE8D9D6)
YUV	221.1430, -3.5215, 9.5216
Hunter-Lab	84.6384, -0.0058, 7.5884

Details

The YUV color $221.1430, -3.5215, 9.5216$ is a light color, and the websafe version is hex `CCCCCC`. A complement of this color would be $224.8570, 3.5215, -9.5216$, and the grayscale version is $221.0000, 0.0000, 0.0000$.

A 20% lighter version of the original color is $255.0000, 0.0000, 0.0000$, and $165.8440, -3.3741, 8.9068$ is the 20% darker color. If you saturate the color by 10%, you get $207.3680, -8.0694, 21.6023$, and if you desaturate by 10%, it is $234.9180, 1.0264, -2.5591$.

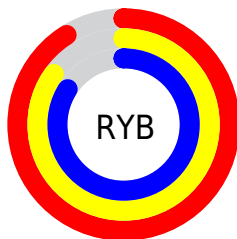
Distribution



Red (91%)

Green (85%)

Blue (84%)



Red (91%)

Yellow (85%)

Blue (84%)

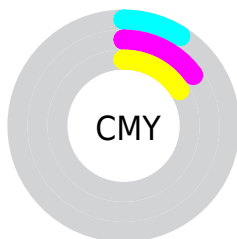


Cyan (0%)

Magenta (6%)

Yellow (8%)

Black (9%)



Cyan (9%)

Magenta (15%)

Yellow (16%)

Brightness & Saturation Gradients

These gradients show how the YUV color 221.1430, -3.5215, 9.5216 changes by changing the brightness by 10 percent. The first figure shows a shift by +10% for each color and the second figure -10%.

Similar to the brightness gradients but the following saturation gradients show a change of the YUV color 221.1430, -3.5215, 9.5216 by changing the saturation by 10% instead.

■ 221.1430, -3.5215,
9.5216

■ 221.1430, -3.5215,
9.5216

255.0000, 0.0000,
0.0000

■ 193.1430, -3.5215,
9.5216

■ 165.8440, -3.3741,
8.9068

■ 139.8440, -3.3741,
8.9068

■ 114.5450, -3.2267,
8.2920

■ 89.6590, -2.7899,
8.1921

■ 66.3600, -2.6425,
7.5773

■ 44.0610, -2.4951,

6.9625

■ 23.6480, -2.7845,
6.4477

■ 0.0000, 0.0000,
0.0000

■ 221.1430, -3.5215,
9.5216

■ 221.1430, -3.5215,
9.5216

■ 207.3680, -8.0694,
21.6023

■ 234.9180, 1.0264,
-2.5591

■ 193.0060,
-12.3280, 34.1977

■ 248.1230, 3.3904,
-14.1399

■ 179.1170,
-17.3127, 46.3784

■ 165.3420,
-21.8606, 58.4591

■ 150.9800,
-26.1191, 71.0545

■ 137.2050,
-30.6671, 83.1352

■ 123.4300,
-35.2150, 95.2159

■ 108.9540,
-39.9103, 107.9113

■ 95.1790, -44.4582,
119.9920

Harmonies

Analogous

The Analogous color harmony consists of three colors that are next to each other on the color wheel.



221.7130, -1.3375, 9.0217



221.1430, -3.5215, 9.5216



220.3770, -5.1159, 7.5624

Triad

The Triadic color harmony groups three colors that are evenly spaced from another and form a triangle on the color wheel.



221.1430, -3.5215, 9.5216



218.7990, -1.8729, -5.9627



220.0580, 5.3944, -3.5589

Complementary

The Complementary color scheme is a pair of colors which are on the opposite of each other on the color wheel.



221.1430, -3.5215, 9.5216



224.8570, 3.5215, -9.5216

Split Complementary

Split-complementary colors differ from the complementary color scheme. The scheme consists of three colors, the original color and two neighbors of the complement color.



219.3240, 5.2633, -8.1771



221.1430, -3.5215, 9.5216



218.2870, 1.3375, -9.0217

Square

The Square scheme is like the rectangle color scheme, but the four colors are evenly spaced on the color wheel.



221.1430, -3.5215, 9.5216



219.2510, -4.0677, -1.9741



218.5580, 3.6689, -10.1364



220.7490, 4.0677, 1.9741

Rectangle

The Rectangle color scheme consists of four colors that form a rectangle on the color wheel.



221.1430, -3.5215, 9.5216



219.9530, -5.3998, 5.3032



218.5580, 3.6689, -10.1364



220.0470, 5.3998, -5.3032

Sweetspot

The Sweet Spot groups the original color and five complimentary colors.



221.1430, -3.5215, 9.5216



252.0820, -1.0264, 2.5591



221.0920, 3.8986, 9.5663



125.8970, -0.4422, 1.8443



0.0000, 0.0000, 0.0000



128.0000, 0.0000, 0.0000

Same Dimension

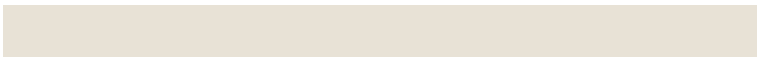
The Same Dimension uses a secret algorithm to generate beautiful new colors.



221.1430, -3.5215, 9.5216



241.2250, -4.5479, 12.0807



226.4260, -6.1260, 4.8884



107.7620, -2.3477, 6.3477



71.1310, -35.0676, 94.6011



19.9450, -9.8329, 27.2352

Inverse Universe

The Inverse Universe completely reimagines the original color for something new.



224.8570, 3.5215, -9.5216



245.7750, 4.5479, -12.0807



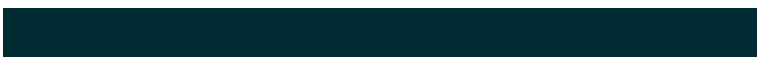
219.5740, 6.1260, -4.8884



110.2380, 2.3477, -6.3477



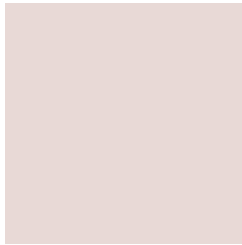
107.8690, 35.0676, -94.6011



31.0550, 9.8329, -27.2352

Previews

White Background



This preview shows how the YUV color 221.1430, -3.5215, 9.5216 looks on a white background.

Color Contrast Check

Large Text (above 18pt) WCAG AA × Fail

Any Text WCAG AA × Fail

Large Text (above 18pt) WCAG AAA × Fail

Any Text WCAG AAA × Fail

Black Background



This preview shows how the YUV color 221.1430, -3.5215, 9.5216 looks on a black background.

Color Contrast Check

Large Text (above 18pt) WCAG AA ✓ Pass

Any Text WCAG AA ✓ Pass

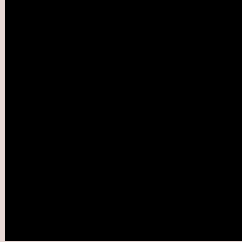
Large Text (above 18pt) WCAG AAA ✓ Pass

Any Text WCAG AAA ✓ Pass

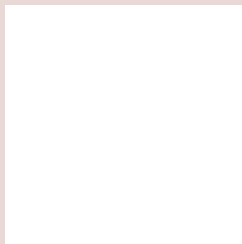
If you want to check with other color combinations, try the [Color Contrast Checker](#).

YUV 221.1430, -3.5215, 9.5216

Background



This preview shows how black text looks on a background with the YUV color 221.1430, -3.5215, 9.5216.



This preview shows how white text looks on a background with the YUV color 221.1430, -3.5215,

9.5216.

Color Blindness Simulation

Color vision deficiency is a very complex topic, and I could not describe the different causes any better than Wikipedia does, so if you want to learn more, you should check out their [article about color blindness](#).

Dichromacy



Original Color

221.1430, -3.5215, 9.5216

Protanopia

220.3380, -2.6316, 4.0886

Deuteranopia

222.1980, -3.5486, 18.2434



Tritanopia

221.9180, 4.4774, 10.5959

Trichromacy



Original Color

221.1430, -3.5215, 9.5216

Protanomaly

220.6480, -2.7845, 6.4477

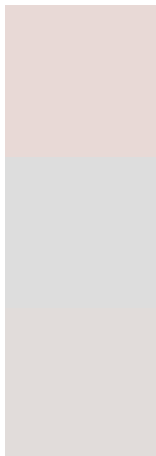
Deuteranomaly

221.5890, -3.2484, 15.2694

Tritanomaly

221.5220, 1.7147, 10.0662

Monochromacy



Original Color

221.1430, -3.5215, 9.5216

Achromatopsia

221.0000, 0.0000, 0.0000

Achromatomaly

221.2670, -1.6106, 3.2738

CSS Examples

Text

The CSS property to change the color of the text to YUV 221.1430, -3.5215, 9.5216 is called "color". The color property can be set on classes, ids or directly on the HTML element.

This example shows how text in the color `rgb(232, 217, 214)` looks like.

```
.text, #text, p{  
    color:rgb(232, 217, 214)  
}
```

If you want to add a text shadow in that color use the text-shadow property, you can generate a text shadow directly with our [CSS Text Shadow Generator](#).

Here you see how black text with a 4 pixel rgb(232, 217, 214) colored shadow looks like.

```
.shadow{ text-shadow: 4px 4px 2px rgb(232, 217, 214) }
```

Border

The CSS property to change the border of an element to YUV 221.1430, -3.5215, 9.5216 is called "border". The border property can be set on classes, ids or directly on the HTML element.

This example shows the color as border, it can be applied via the CSS property "border" or "border-color".

```
.border, #border, table{ border:4px solid rgb(232, 217, 214) }
```


If only the border color should be changed use the property border-color.

```
.border{ border-color:rgb(232, 217, 214) }
```

If you want to add a box shadow in that color use:

Here you see how a box with a 4 pixel rgb(232, 217, 214) colored shadow looks like.

```
.boxshadow{ -moz-box-shadow:4px 4px 4px  
4px rgb(232, 217, 214); -webkit-box-  
shadow:4px 4px 4px 4px rgb(232, 217, 214);  
box-shadow:4px 4px 4px 4px rgb(232, 217,  
214) }
```

Background

The CSS property to change the background color of an element to YUV 221.1430, -3.5215, 9.5216 is called "background". The background property can be set on classes, ids or directly on the HTML element.

```
.background, #background, body{  
background: rgb(232, 217, 214) }
```

If only the background color should be changed can be used:

```
.background{ background-color: rgb(232,  
217, 214) }
```

This example shows the color as background, it is applied via the CSS property "background".

To optimize and compress your CSS code, you can use our [online CSS compressor and optimizer](#) based on csstidy. If you want to create a linear or radial gradient as background or border, check our [CSS Gradient Generator](#).

Hey! You found this booklet interesting? Support Converting Colors with the new Membership Option!

The pro membership hides all ads, plus gives you double the colors in the color bucket, and more awesome pro features!

[Learn more, Memberships starting at \\$2.50/m!](#)

**Follow me
on Twitter!**

@ConvertingColor