

Converting Colors

YUV(221.2530, -7.0267,
13.8101)

Have a look what the booklet for
YUV(221.2530, -7.0267, 13.8101)
contains.

YUV(221.2530, -7.0267, 13.8101)	3
<i>Conversions</i>	4
<i>Details</i>	6
<i>Harmonies</i>	12
<i>Previews</i>	24
<i>Color Blindness Simulation</i>	28
<i>CSS Examples</i>	31

Color

**YUV(221.2530, -7.0267,
13.8101)**

Conversions

Conversions Part 1

Format	Color
Hex	EDD8CF
RGB	237, 216, 207
RGB Percent	93%, 85%, 81%
CMY	0.0706, 0.1529, 0.1882
CMYK	0.00, 0.09, 0.13, 0.07
HSL	18°, 45%, 87%
HSV	18°, 13%, 93%
XYZ	70.7434, 71.6213, 69.1272
YIQ	221.2530, 15.4050, 1.6530

Conversions

Conversions Part 2

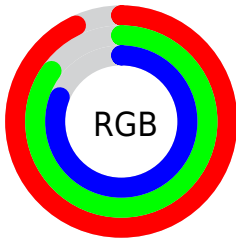
Format	Color
R _Y B	237, 220, 207
Decimal	15587535
CIE Lab	87.79, 5.77, 7.05
CIE LCh	88, 9.110, 50.679
Yxy	71.6213, 0.3345, 0.3386
Android (android.graphics.Color)	4293777615 (0xFFEDD8CF)
YUV	221.2530, -7.0267, 13.8101
Hunter-Lab	84.6293, 1.1105, 10.8111

Details

The YUV color $221.2530, -7.0267, 13.8101$ is a light color, and the websafe version is hex `CCCCCC`. A complement of this color would be $222.7470, 7.0267, -13.8101$, and the grayscale version is $221.0000, 0.0000, 0.0000$.

A 20% lighter version of the original color is $255.0000, 0.0000, 0.0000$, and $166.0680, -6.4425, 13.0954$ is the 20% darker color. If you saturate the color by 10%, you get $208.5380, -12.5902, 24.9612$, and if you desaturate by 10%, it is $233.9680, -1.4632, 2.6591$.

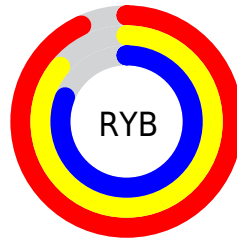
Distribution



Red (93%)

Green (85%)

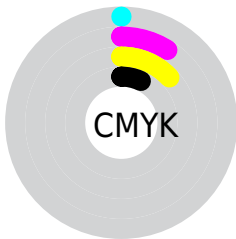
Blue (81%)



Red (93%)

Yellow (86%)

Blue (81%)

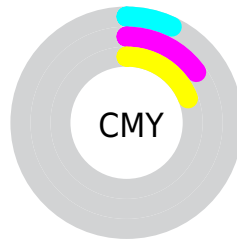


Cyan (0%)

Magenta (9%)

Yellow (13%)

Black (7%)



Cyan (7%)

Magenta (15%)

Yellow (19%)

Brightness & Saturation Gradients

These gradients show how the YUV color 221.2530, -7.0267, 13.8101 changes by changing the brightness by 10 percent. The first figure shows a shift by +10% for each color and the second figure -10%.

Similar to the brightness gradients but the following saturation gradients show a change of the YUV color 221.2530, -7.0267, 13.8101 by changing the saturation by 10% instead.

■ 221.2530, -7.0267,
13.8101

■ 221.2530, -7.0267,
13.8101

255.0000, 0.0000,
0.0000

■ 193.2530, -7.0267,
13.8101

■ 166.0680, -6.4425,
13.0954

■ 139.7690, -6.2951,
12.4806

■ 114.4700, -6.1477,
11.8658

■ 89.5840, -5.7109,
11.7658

■ 65.9860, -5.4161,
10.5363

■ 43.8010, -4.8319,

9.8215

■ 23.1600, -5.9949,
9.5067

■ 0.0000, 0.0000,
0.0000

■ 221.2530, -7.0267,
13.8101

■ 221.2530, -7.0267,
13.8101

■ 208.5380,
-12.5902, 24.9612

■ 233.9680, -1.4632,
2.6591

■ 196.5240,
-18.0063, 35.4975

■ 245.9820, 3.9529,
-7.8772

■ 183.8090,
-23.5698, 46.6485

■ 249.6180, 2.6533,
-11.0660

■ 171.6810,
-29.4227, 57.2848

■ 159.0800,
-34.5494, 68.3358

■ 146.3650,
-40.1129, 79.4869

■ 134.2370,
-45.9658, 90.1232

■ 121.5220,
-51.5293, 101.2742

■ 112.5400,
-55.4822, 109.1514

Harmonies

Analogous

The Analogous color harmony consists of three colors that are next to each other on the color wheel.



222.0620, -3.9746, 14.8546



221.2530, -7.0267, 13.8101



220.4650, -8.6102, 8.3622

Triad

The Triadic color harmony groups three colors that are evenly spaced from another and form a triangle on the color wheel.



221.2530, -7.0267, 13.8101



217.5100, -0.2514, -12.7253



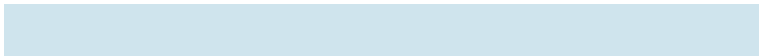
220.9380, 7.4256, -1.6996

Complementary

The Complementary color scheme is a pair of colors which are on the opposite of each other on the color wheel.



221.2530, -7.0267, 13.8101



222.7470, 7.0267, -13.8101

Split Complementary

Split-complementary colors differ from the complementary color scheme. The scheme consists of three colors, the original color and two neighbors of the complement color.



219.5240, 8.6157, -10.1065



221.2530, -7.0267, 13.8101



217.3400, 4.2694, -16.0842

Square

The Square scheme is like the rectangle color scheme, but the four colors are evenly spaced on the color wheel.



221.2530, -7.0267, 13.8101



218.4030, -4.6357, -6.4924



218.1490, 7.3215, -15.0397



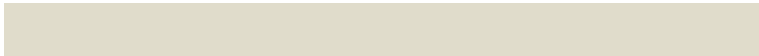
221.5970, 4.6357, 6.4924

Rectangle

The Rectangle color scheme consists of four colors that form a rectangle on the color wheel.



221.2530, -7.0267, 13.8101



219.2580, -8.0152, 4.1587



218.1490, 7.3215, -15.0397



220.4430, 8.1626, -4.7735

Sweetspot

The Sweet Spot groups the original color and five complimentary colors.



221.2530, -7.0267, 13.8101



249.7510, -2.3422, 4.6034



218.3640, 4.7505, 16.3438



124.2670, -1.6106, 3.2738



0.0000, 0.0000, 0.0000



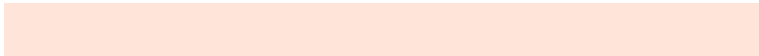
128.0000, 0.0000, 0.0000

Same Dimension

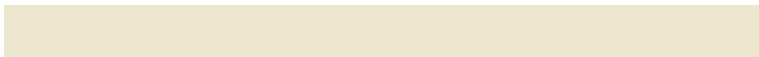
The Same Dimension uses a secret algorithm to generate beautiful new colors.



221.2530, -7.0267, 13.8101



234.8190, -8.7848, 17.6987



229.4710, -11.0782, 6.6029



111.0500, -2.4896, 5.2182



85.8170, -42.3078, 83.4755



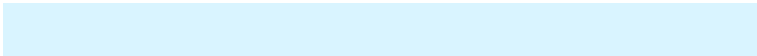
25.5380, -12.5902, 24.9612

Inverse Universe

The Inverse Universe completely reimagines the original color for something new.



222.7470, 7.0267, -13.8101



237.1810, 8.7848, -17.6987



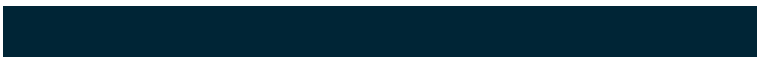
213.9420, 11.3676, -6.0881



111.9500, 2.4897, -5.2181



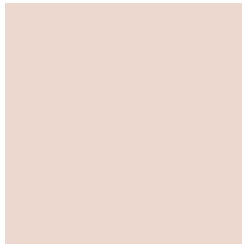
95.1830, 42.3078, -83.4755



27.8750, 12.8796, -24.4464

Previews

White Background



This preview shows how the YUV color 221.2530, -7.0267, 13.8101 looks on a white background.

Color Contrast Check

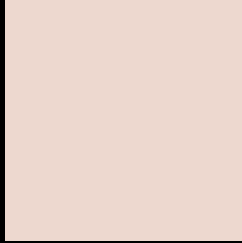
Large Text (above 18pt) WCAG AA × Fail

Any Text WCAG AA × Fail

Large Text (above 18pt) WCAG AAA × Fail

Any Text WCAG AAA × Fail

Black Background



This preview shows how the YUV color 221.2530, -7.0267, 13.8101 looks on a black background.

Color Contrast Check

Large Text (above 18pt) WCAG AA ✓ Pass

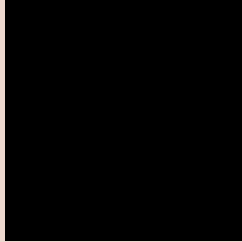
Any Text WCAG AA ✓ Pass

Large Text (above 18pt) WCAG AAA ✓ Pass

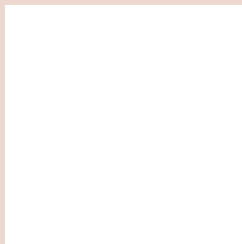
Any Text WCAG AAA ✓ Pass

If you want to check with other color combinations, try the [Color Contrast Checker](#).

YUV 221.2530, -7.0267, 13.8101 Background



This preview shows how black text looks on a background with the YUV color 221.2530, -7.0267, 13.8101.

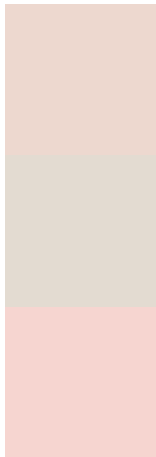


This preview shows how white text looks on a background with the YUV color 221.2530, -7.0267,

Color Blindness Simulation

Color vision deficiency is a very complex topic, and I could not describe the different causes any better than Wikipedia does, so if you want to learn more, you should check out their [article about color blindness](#).

Dichromacy



Original Color

221.2530, -7.0267, 13.8101

Protanopia

220.2520, -5.5472, 5.9180

Deuteranopia

222.2970, -7.0484, 20.7875



Tritanopia

222.8970, 3.0088, 14.9993

Trichromacy



Original Color

221.2530, -7.0267, 13.8101

Protanomaly

220.7470, -6.2843, 8.9919

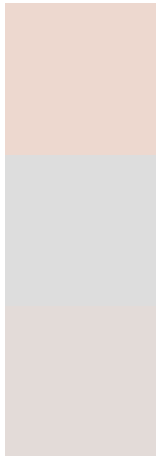
Deuteranomaly

221.9870, -6.8956, 18.4284

Tritanomaly

222.2730, -0.6276, 14.6696

Monochromacy



Original Color

221.2530, -7.0267, 13.8101

Achromatopsia

221.0000, 0.0000, 0.0000

Achromatomaly

221.0500, -2.4896, 5.2182

CSS Examples

Text

The CSS property to change the color of the text to YUV 221.2530, -7.0267, 13.8101 is called "color". The color property can be set on classes, ids or directly on the HTML element.

This example shows how text in the color `rgb(237, 216, 207)` looks like.

```
.text, #text, p{  
    color:rgb(237, 216, 207)  
}
```

If you want to add a text shadow in that color use the text-shadow property, you can generate a text shadow directly with our [CSS Text Shadow Generator](#).

Here you see how black text with a 4 pixel rgb(237, 216, 207) colored shadow looks like.

```
.shadow{ text-shadow: 4px 4px 2px rgb(237, 216, 207) }
```

Border

The CSS property to change the border of an element to YUV 221.2530, -7.0267, 13.8101 is called "border". The border property can be set on classes, ids or directly on the HTML element.

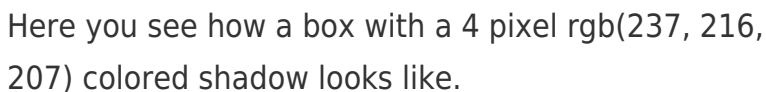
This example shows the color as border, it can be applied via the CSS property "border" or "border-color".

```
.border, #border, table{ border:4px solid rgb(237, 216, 207) }
```


If only the border color should be changed use the property `border-color`.

```
.border{ border-color:rgb(237, 216, 207) }
```

If you want to add a box shadow in that color use:



Here you see how a box with a 4 pixel `rgb(237, 216, 207)` colored shadow looks like.

```
.boxshadow{ -moz-box-shadow:4px 4px 4px  
4px rgb(237, 216, 207); -webkit-box-  
shadow:4px 4px 4px 4px rgb(237, 216, 207);  
box-shadow:4px 4px 4px 4px rgb(237, 216,  
207) }
```

Background

The CSS property to change the background color of an element to YUV 221.2530, -7.0267, 13.8101 is called "background". The background property can be set on classes, ids or directly on the HTML element.

```
.background, #background, body{  
background: rgb(237, 216, 207) }
```

If only the background color should be changed can be used:

```
.background{ background-color: rgb(237,  
216, 207) }
```

This example shows the color as background, it is applied via the CSS property "background".

To optimize and compress your CSS code, you can use our [online CSS compressor and optimizer](#) based on csstidy. If you want to create a linear or radial gradient as background or border, check our [CSS Gradient Generator](#).

Hey! You found this booklet interesting? Support Converting Colors with the new Membership Option!

The pro membership hides all ads, plus gives you double the colors in the color bucket, and more awesome pro features!

[Learn more, Memberships starting at \\$2.50/m!](#)

**Follow me
on Twitter!**

@ConvertingColor