

Converting Colors

YUV(222.2580, -4.5642,
17.3137)

Have a look what the booklet for
YUV(222.2580, -4.5642, 17.3137)
contains.

YUV(222.2580, -4.5642, 17.3137)	3
<i>Conversions</i>	4
<i>Details</i>	6
<i>Harmonies</i>	12
<i>Previews</i>	24
<i>Color Blindness Simulation</i>	28
<i>CSS Examples</i>	31

Color

**YUV(222.2580, -4.5642,
17.3137)**

Conversions

Conversions Part 1

Format	Color
Hex	F2D6D5
RGB	242, 214, 213
RGB Percent	95%, 84%, 84%
CMY	0.0510, 0.1608, 0.1647
CMYK	0.00, 0.12, 0.12, 0.05
HSL	2°, 53%, 89%
HSV	2°, 12%, 95%
XYZ	72.6748, 71.7745, 72.9743
YIQ	222.2580, 17.0090, 5.6250

Conversions

Conversions Part 2

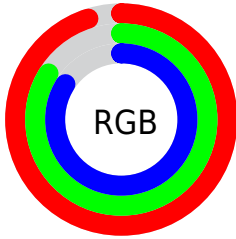
Format	Color
RYB	242, 214, 213
Decimal	15914709
CIELab	87.86, 9.54, 4.04
CIELCh	88, 10.362, 22.970
Yxy	71.7745, 0.3343, 0.3301
Android (android.graphics.Color)	4294104789 (0xFFFF2D6D5)
YUV	222.2580, -4.5642, 17.3137
Hunter-Lab	84.7198, 4.8620, 8.2338

Details

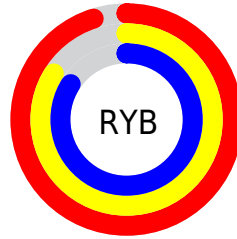
The YUV color $222.2580, -4.5642, 17.3137$ is a light color, and the websafe version is hex FFCCCC . A complement of this color would be $232.7420, 4.5642, -17.3137$, and the grayscale version is $222.0000, 0.0000, 0.0000$.

A 20% lighter version of the original color is $255.0000, 0.0000, 0.0000$, and $166.9590, -4.4168, 16.6990$ is the 20% darker color. If you saturate the color by 10%, you get $206.0210, -8.3914, 31.5536$, and if you desaturate by 10%, it is $238.4950, -0.7370, 3.0739$.

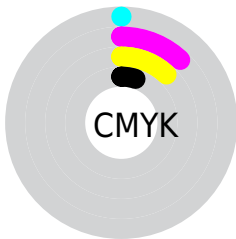
Distribution



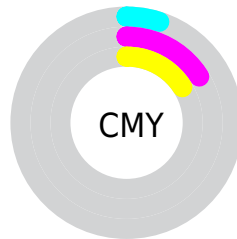
- Red (95%)
- Green (84%)
- Blue (84%)



- Red (95%)
- Yellow (84%)
- Blue (84%)



- Cyan (0%)
- Magenta (12%)
- Yellow (12%)
- Black (5%)



- Cyan (5%)
- Magenta (16%)
- Yellow (16%)

Brightness & Saturation Gradients


These gradients show how the YUV color 222.2580, -4.5642, 17.3137 changes by changing the brightness by 10 percent. The first figure shows a shift by +10% for each color and the second figure -10%.


Similar to the brightness gradients but the following saturation gradients show a change of the YUV color 222.2580, -4.5642, 17.3137 by changing the saturation by 10% instead.

 222.2580, -4.5642,
17.3137


 222.2580, -4.5642,
17.3137


255.0000, 0.0000,
0.0000


 194.2580, -4.5642,
17.3137

 166.9590, -4.4168,
16.6990

 140.6600, -4.2694,
16.0842

 115.0620, -3.9746,
14.8546

 90.7630, -3.8272,
14.2398

 66.5780, -3.2430,
13.5251

 44.8660, -3.3849,

12.3955

■ 23.6810, -2.8007,
11.6808

■ 0.2990, -0.1474,
0.6148

■ 222.2580, -4.5642,
17.3137

■ 222.2580, -4.5642,
17.3137

■ 206.0210, -8.3914,
31.5536

■ 238.4950, -0.7370,
3.0739

■ 189.1970,
-11.9291, 46.3082

■ 251.1130, 1.9163,
-7.9921

■ 172.8460,
-16.1931, 60.6481

■ 156.6090,
-20.0202, 74.8879

■ 139.7850,
-23.5580, 89.6426

■ 123.5480,
-27.3852, 103.8824

■ 106.7240,
-30.9229, 118.6371

■ 90.3730, -35.1869,
132.9769

■ 77.0540, -37.9876,
144.6576

Harmonies

Analogous

The Analogous color harmony consists of three colors that are next to each other on the color wheel.



222.5010, 0.2460, 14.4696



222.2580, -4.5642, 17.3137



221.6230, -8.1951, 15.2396

Triad

The Triadic color harmony groups three colors that are evenly spaced from another and form a triangle on the color wheel.



222.2580, -4.5642, 17.3137



218.2780, -5.0671, -8.1368



219.8660, 9.9261, -10.4065

Complementary

The Complementary color scheme is a pair of colors which are on the opposite of each other on the color wheel.



222.2580, -4.5642, 17.3137



232.7420, 4.5642, -17.3137

Split Complementary

Split-complementary colors differ from the complementary color scheme. The scheme consists of three colors, the original color and two neighbors of the complement color.



218.4800, 8.6374, -17.0840



222.2580, -4.5642, 17.3137



217.3140, 0.3382, -15.1844

Square

The Square scheme is like the rectangle color scheme, but the four colors are evenly spaced on the color wheel.



222.2580, -4.5642, 17.3137



219.1220, -8.4411, 0.7700



217.2580, 5.2958, -18.6433



221.4650, 8.1518, -1.2848

Rectangle

The Rectangle color scheme consists of four colors that form a rectangle on the color wheel.



222.2580, -4.5642, 17.3137



220.9600, -9.3473, 11.4361



217.2580, 5.2958, -18.6433



219.1430, 9.7895, -13.2804

Sweetspot

The Sweet Spot groups the original color and five complimentary colors.



222.2580, -4.5642, 17.3137



247.9900, -1.4741, 6.1478



224.8630, 7.9555, 15.0291



123.0930, -1.0318, 4.3034



0.0000, 0.0000, 0.0000



128.0000, 0.0000, 0.0000

Same Dimension

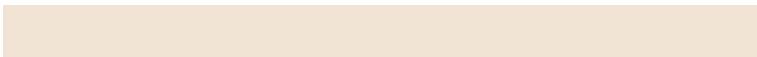
The Same Dimension uses a secret algorithm to generate beautiful new colors.



222.2580, -4.5642, 17.3137



230.9380, -5.8854, 21.1024



230.4760, -8.6157, 10.1065



111.5880, -1.7689, 7.3773



58.5380, -28.8592, 110.0302



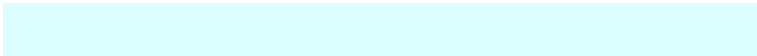
17.9180, -8.8336, 33.3979

Inverse Universe

The Inverse Universe completely reimagines the original color for something new.



232.7420, 4.5642, -17.3137



243.6490, 5.5960, -21.6172



224.5240, 8.6157, -10.1065



115.8250, 2.0583, -6.8625



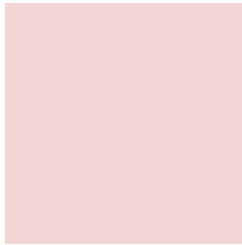
124.8750, 29.1486, -109.5154



38.0820, 8.8336, -33.3979

Previews

White Background



This preview shows how the YUV color 222.2580, -4.5642, 17.3137 looks on a white background.

Color Contrast Check

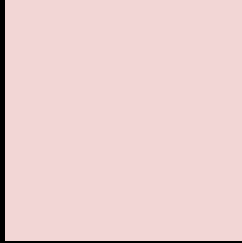
Large Text (above 18pt) WCAG AA × Fail

Any Text WCAG AA × Fail

Large Text (above 18pt) WCAG AAA × Fail

Any Text WCAG AAA × Fail

Black Background



This preview shows how the YUV color 222.2580, -4.5642, 17.3137 looks on a black background.

Color Contrast Check

Large Text (above 18pt) WCAG AA ✓ Pass

Any Text WCAG AA ✓ Pass

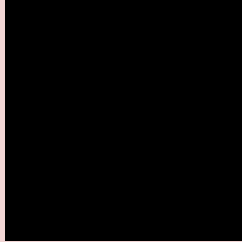
Large Text (above 18pt) WCAG AAA ✓ Pass

Any Text WCAG AAA ✓ Pass

If you want to check with other color combinations, try the [Color Contrast Checker](#).

YUV 222.2580, -4.5642, 17.3137

Background



This preview shows how black text looks on a background with the YUV color 222.2580, -4.5642, 17.3137.

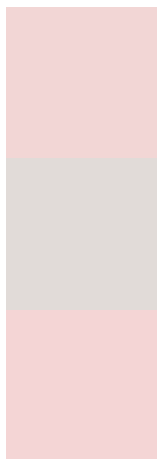


This preview shows how white text looks on a background with the YUV color 222.2580, -4.5642,

Color Blindness Simulation

Color vision deficiency is a very complex topic, and I could not describe the different causes any better than Wikipedia does, so if you want to learn more, you should check out their [article about color blindness](#).

Dichromacy



Original Color

222.2580, -4.5642, 17.3137

Protanopia

220.4520, -2.1948, 3.9886

Deuteranopia

222.2690, -4.5696, 19.0581



Tritanopia

223.3920, 2.2717, 18.0732

Trichromacy



Original Color

222.2580, -4.5642, 17.3137

Protanomaly

220.9580, -2.9373, 8.8068

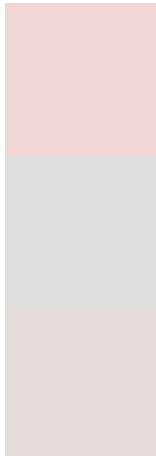
Deuteranomaly

221.9700, -4.4222, 18.4433

Tritanomaly

223.1100, -0.0542, 17.4435

Monochromacy



Original Color

222.2580, -4.5642, 17.3137

Achromatopsia

222.0000, 0.0000, 0.0000

Achromatomaly

221.9900, -1.4741, 6.1478

CSS Examples

Text

The CSS property to change the color of the text to YUV 222.2580, -4.5642, 17.3137 is called "color". The color property can be set on classes, ids or directly on the HTML element.

This example shows how text in the color `rgb(242, 214, 213)` looks like.

```
.text, #text, p{  
    color:rgb(242, 214, 213)  
}
```

If you want to add a text shadow in that color use the text-shadow property, you can generate a text shadow directly with our [CSS Text Shadow Generator](#).

Here you see how black text with a 4 pixel rgb(242, 214, 213) colored shadow looks like.

```
.shadow{ text-shadow: 4px 4px 2px rgb(242, 214, 213) }
```

Border

The CSS property to change the border of an element to YUV 222.2580, -4.5642, 17.3137 is called "border". The border property can be set on classes, ids or directly on the HTML element.

This example shows the color as border, it can be applied via the CSS property "border" or "border-color".

```
.border, #border, table{ border:4px solid rgb(242, 214, 213) }
```


If only the border color should be changed use the property `border-color`.

```
.border{ border-color:rgb(242, 214, 213) }
```

If you want to add a box shadow in that color use:

Here you see how a box with a 4 pixel `rgb(242, 214, 213)` colored shadow looks like.

```
.boxshadow{ -moz-box-shadow:4px 4px 4px  
4px rgb(242, 214, 213); -webkit-box-  
shadow:4px 4px 4px 4px rgb(242, 214, 213);  
box-shadow:4px 4px 4px 4px rgb(242, 214,  
213) }
```

Background

The CSS property to change the background color of an element to YUV 222.2580, -4.5642, 17.3137 is called "background". The background property can be set on classes, ids or directly on the HTML element.

```
.background, #background, body{  
background: rgb(242, 214, 213) }
```

If only the background color should be changed can be used:

```
.background{ background-color: rgb(242,  
214, 213) }
```

This example shows the color as background, it is applied via the CSS property "background".

To optimize and compress your CSS code, you can use our [online CSS compressor and optimizer](#) based on csstidy. If you want to create a linear or radial gradient as background or border, check our [CSS Gradient Generator](#).

Hey! You found this booklet interesting? Support Converting Colors with the new Membership Option!

The pro membership hides all ads, plus gives you double the colors in the color bucket, and more awesome pro features!

[Learn more, Memberships starting at \\$2.50/m!](#)

**Follow me
on Twitter!**

@ConvertingColor