

Converting Colors

YUV(222.4220, 6.6940, -0.3701)

Have a look what the booklet for
YUV(222.4220, 6.6940, -0.3701)
contains.

YUV(222.4220, 6.6940, -0.3701)	3
<i>Conversions</i>	4
<i>Details</i>	6
<i>Harmonies</i>	12
<i>Previews</i>	24
<i>Color Blindness Simulation</i>	28
<i>CSS Examples</i>	31

Color

**YUV(222.4220, 6.6940,
-0.3701)**

Conversions

Conversions Part 1

Format	Color
Hex	DEDCEC
RGB	222, 220, 236
RGB Percent	87%, 86%, 93%
CMY	0.1294, 0.1373, 0.0745
CMYK	0.06, 0.07, 0.00, 0.07
HSL	248°, 30%, 89%
HSV	248°, 7%, 93%
XYZ	70.8577, 72.7721, 89.6687
YIQ	222.4220, -3.9440, 5.4000

Conversions

Conversions Part 2

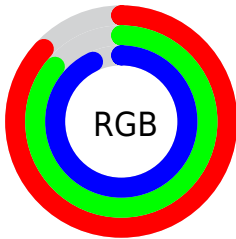
Format	Color
R _Y B	222, 220, 236
Decimal	14605548
CIE Lab	88.34, 3.63, -7.57
CIE LCh	88, 8.398, 295.635
Yxy	72.7721, 0.3037, 0.3119
Android (android.graphics.Color)	4292795628 (0xFFDEDCEC)
YUV	222.4220, 6.6940, -0.3701
Hunter-Lab	85.3066, -1.0201, -2.6072

Details

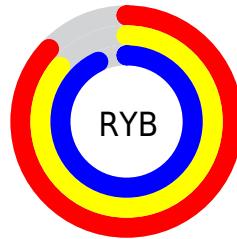
The YUV color $222.4220, 6.6940, -0.3701$ is a light color, and the websafe version is hex $CCCCCC$. A complement of this color would be $233.5780, -6.6940, 0.3701$, and the grayscale version is $222.0000, 0.0000, 0.0000$.

A 20% lighter version of the original color is $255.0000, 0.0000, 0.0000$, and $167.3080, 6.2572, -0.2701$ is the 20% darker color. If you saturate the color by 10%, you get $202.0550, 16.7349, -0.9252$, and if you desaturate by 10%, it is $242.7890, -3.3470, 0.1850$.

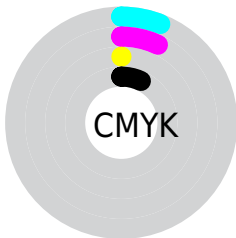
Distribution



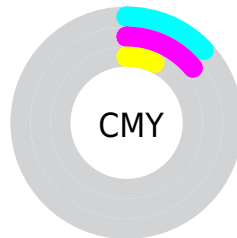
- Red (87%)
- Green (86%)
- Blue (93%)



- Red (87%)
- Yellow (86%)
- Blue (93%)



- Cyan (6%)
- Magenta (7%)
- Yellow (0%)
- Black (7%)



- Cyan (13%)
- Magenta (14%)
- Yellow (7%)

Brightness & Saturation Gradients

These gradients show how the YUV color 222.4220, 6.6940, -0.3701 changes by changing the brightness by 10 percent. The first figure shows a shift by +10% for each color and the second figure -10%.

Similar to the brightness gradients but the following saturation gradients show a change of the YUV color 222.4220, 6.6940, -0.3701 by changing the saturation by 10% instead.

■ 222.4220, 6.6940,
-0.3701

■ 222.4220, 6.6940,
-0.3701

255.0000, 0.0000,
0.0000

■ 194.4220, 6.6940,
-0.3701

■ 167.3080, 6.2572,
-0.2701

■ 140.8950, 5.9678,
-0.7849

■ 115.1940, 5.8204,
-0.1701

■ 90.7810, 5.5310,
-0.6849

■ 67.6670, 5.0942,
-0.5850

■ 45.0800, 5.3836,

-0.0702

■ 24.5530, 4.6574,
-0.4850

■ 1.2540, 4.8048,
-1.0998

■ 222.4220, 6.6940,
-0.3701

■ 222.4220, 6.6940,
-0.3701

■ 202.0550, 16.7349,
-0.9252

■ 242.7890, -3.3470,
0.1850

■ 182.5740, 26.3390,
-1.3804

■ 252.8340, -8.2992,
1.8996

■ 162.2070, 36.3799,
-1.9355

■ 142.4270, 46.1315,
-3.0055

■ 122.3590, 56.0250,
-2.9458

■ 101.9920, 66.0659,
-3.5010

■ 82.2120, 75.8175,
-4.5709

■ 62.1440, 85.7110,
-4.5113

■ 42.3640, 95.4625,
-5.5812

Harmonies

Analogous

The Analogous color harmony consists of three colors that are next to each other on the color wheel.



221.3070, 7.7366, -8.1622



222.4220, 6.6940, -0.3701



223.3690, 3.7621, 6.6924

Triad

The Triadic color harmony groups three colors that are evenly spaced from another and form a triangle on the color wheel.



222.4220, 6.6940, -0.3701



222.6550, -6.7319, 12.5806



219.0370, 0.4748, -12.3104

Complementary

The Complementary color scheme is a pair of colors which are on the opposite of each other on the color wheel.



222.4220, 6.6940, -0.3701



233.5780, -6.6940, 0.3701

Split Complementary

Split-complementary colors differ from the complementary color scheme. The scheme consists of three colors, the original color and two neighbors of the complement color.



219.6310, -3.7621, -6.6924



222.4220, 6.6940, -0.3701



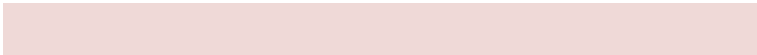
221.9810, -7.8786, 7.0327

Square

The Square scheme is like the rectangle color scheme, but the four colors are evenly spaced on the color wheel.



222.4220, 6.6940, -0.3701



223.3500, -4.1165, 13.7251



220.5780, -6.6940, 0.3701



219.0520, 4.4114, -14.9546

Rectangle

The Rectangle color scheme consists of four colors that form a rectangle on the color wheel.



222.4220, 6.6940, -0.3701



223.7070, 1.1304, 10.7810



220.5780, -6.6940, 0.3701



219.2930, -1.1304, -10.7810

Sweetspot

The Sweet Spot groups the original color and five complimentary colors.



222.4220, 6.6940, -0.3701



250.8690, 2.0366, 0.1149



230.0420, 2.9373, -8.8068



125.3420, 1.3104, -0.2999



0.0000, 0.0000, 0.0000



128.0000, 0.0000, 0.0000

Same Dimension

The Same Dimension uses a secret algorithm to generate beautiful new colors.



222.4220, 6.6940, -0.3701



237.8780, 8.4411, -0.7700



224.8140, 5.5147, 4.5481



107.5530, 4.6574, -0.4850



27.5110, 75.6701, -3.9561



8.2490, 22.5552, -1.0954

Inverse Universe

The Inverse Universe completely reimagines the original color for something new.



226.3800, 3.7567, 8.4367



242.9180, 4.4774, 10.5959



231.1860, -5.5147, -4.5481



110.4290, 2.7465, 5.7628



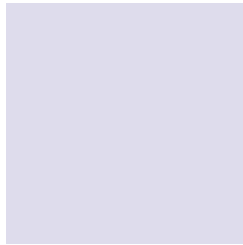
72.1310, 42.3334, 95.4781



21.5040, 12.5695, 28.4990

Previews

White Background



This preview shows how the YUV color 222.4220, 6.6940, -0.3701 looks on a white background.

Color Contrast Check

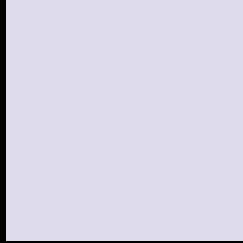
Large Text (above 18pt) WCAG AA × Fail

Any Text WCAG AA × Fail

Large Text (above 18pt) WCAG AAA × Fail

Any Text WCAG AAA × Fail

Black Background



This preview shows how the YUV color 222.4220, 6.6940, -0.3701 looks on a black background.

Color Contrast Check

Large Text (above 18pt) WCAG AA ✓ Pass

Any Text WCAG AA ✓ Pass

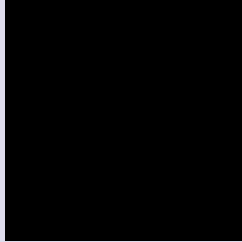
Large Text (above 18pt) WCAG AAA ✓ Pass

Any Text WCAG AAA ✓ Pass

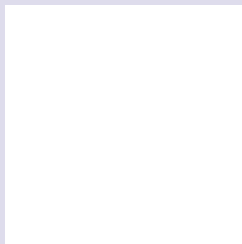
If you want to check with other color combinations, try the [Color Contrast Checker](#).

YUV 222.4220, 6.6940, -0.3701

Background



This preview shows how black text looks on a background with the YUV color 222.4220, 6.6940, -0.3701.



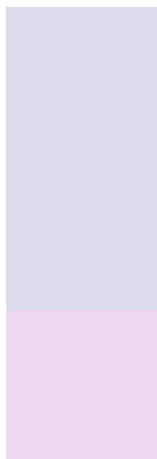
This preview shows how white text looks on a background with the YUV color 222.4220, 6.6940,

-0.3701.

Color Blindness Simulation

Color vision deficiency is a very complex topic, and I could not describe the different causes any better than Wikipedia does, so if you want to learn more, you should check out their [article about color blindness](#).

Dichromacy



Original Color

222.4220, 6.6940, -0.3701

Protanopia

222.1230, 6.8414, -0.9849

Deuteranopia

223.7870, 6.5140, 10.7108



Tritanopia

222.5360, 7.1308, -0.4701

Trichromacy



Original Color

222.4220, 6.6940, -0.3701

Protanomaly

222.1230, 6.8414, -0.9849

Deuteranomaly

223.4660, 6.6723, 6.6073

Tritanomaly

222.5360, 7.1308, -0.4701

Monochromacy



Original Color

222.4220, 6.6940, -0.3701

Achromatopsia

222.0000, 0.0000, 0.0000

Achromatomaly

221.9830, 2.4734, 0.0149

CSS Examples

Text

The CSS property to change the color of the text to YUV 222.4220, 6.6940, -0.3701 is called "color". The color property can be set on classes, ids or directly on the HTML element.

This example shows how text in the color `rgb(222, 220, 236)` looks like.

```
.text, #text, p{  
    color:rgb(222, 220, 236)  
}
```

If you want to add a text shadow in that color use the text-shadow property, you can generate a text shadow directly with our [CSS Text Shadow Generator](#).

Here you see how black text with a 4 pixel rgb(222, 220, 236) colored shadow looks like.

```
.shadow{ text-shadow: 4px 4px 2px rgb(222, 220, 236) }
```

Border

The CSS property to change the border of an element to YUV 222.4220, 6.6940, -0.3701 is called "border". The border property can be set on classes, ids or directly on the HTML element.

This example shows the color as border, it can be applied via the CSS property "border" or "border-color".

```
.border, #border, table{ border:4px solid rgb(222, 220, 236) }
```


If only the border color should be changed use the property `border-color`.

```
.border{ border-color:rgb(222, 220, 236) }
```

If you want to add a box shadow in that color use:

Here you see how a box with a 4 pixel `rgb(222, 220, 236)` colored shadow looks like.

```
.boxshadow{ -moz-box-shadow:4px 4px 4px  
4px rgb(222, 220, 236); -webkit-box-  
shadow:4px 4px 4px 4px rgb(222, 220, 236);  
box-shadow:4px 4px 4px 4px rgb(222, 220,  
236) }
```

Background

The CSS property to change the background color of an element to YUV 222.4220, 6.6940, -0.3701 is called "background". The background property can be set on classes, ids or directly on the HTML element.

```
.background, #background, body{  
background: rgb(222, 220, 236) }
```

If only the background color should be changed can be used:

```
.background{ background-color: rgb(222,  
220, 236) }
```

This example shows the color as background, it is applied via the CSS property "background".

To optimize and compress your CSS code, you can use our [online CSS compressor and optimizer](#) based on csstidy. If you want to create a linear or radial gradient as background or border, check our [CSS Gradient Generator](#).

Hey! You found this booklet interesting? Support Converting Colors with the new Membership Option!

The pro membership hides all ads, plus gives you double the colors in the color bucket, and more awesome pro features!

[Learn more, Memberships starting at \\$2.50/m!](#)

**Follow me
on Twitter!**

@ConvertingColor