

Converting Colors

YUV(227.8120, -4.8373,
11.5659)

Have a look what the booklet for
YUV(227.8120, -4.8373, 11.5659)
contains.

YUV(227.8120, -4.8373, 11.5659)	3
<i>Conversions</i>	4
<i>Details</i>	6
<i>Harmonies</i>	12
<i>Previews</i>	24
<i>Color Blindness Simulation</i>	28
<i>CSS Examples</i>	31

Color

**YUV(227.8120, -4.8373,
11.5659)**

Conversions

Conversions Part 1

Format	Color
Hex	F1DFDA
RGB	241, 223, 218
RGB Percent	95%, 87%, 85%
CMY	0.0549, 0.1255, 0.1451
CMYK	0.00, 0.07, 0.10, 0.05
HSL	13°, 45%, 90%
HSV	13°, 10%, 95%
XYZ	75.3182, 76.5381, 77.1333
YIQ	227.8120, 12.3330, 2.2610

Conversions

Conversions Part 2

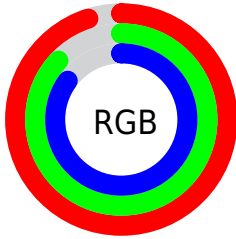
Format	Color
R _Y B	241, 224, 218
Decimal	15851482
CIE Lab	90.11, 5.33, 4.66
CIE LCh	90, 7.075, 41.168
Yxy	76.5381, 0.3289, 0.3342
Android (android.graphics.Color)	4294041562 (0xFFFF1DFDA)
YUV	227.8120, -4.8373, 11.5659
Hunter-Lab	87.4860, 0.5730, 8.9664

Details

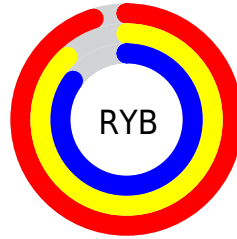
The YUV color $227.8120, -4.8373, 11.5659$ is a light color, and the websafe version is hex `CCCCCC`. A complement of this color would be $231.1880, 4.8373, -11.5659$, and the grayscale version is $228.0000, 0.0000, 0.0000$.

A 20% lighter version of the original color is $255.0000, 0.0000, 0.0000$, and $172.5130, -4.6899, 10.9511$ is the 20% darker color. If you saturate the color by 10%, you get $213.9230, -9.8220, 23.7465$, and if you desaturate by 10%, it is $241.7010, 0.1474, -0.6148$.

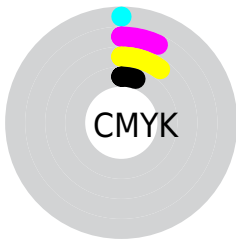
Distribution



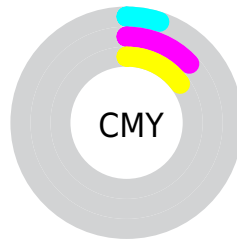
- Red (95%)
- Green (87%)
- Blue (85%)



- Red (95%)
- Yellow (88%)
- Blue (85%)



- Cyan (0%)
- Magenta (7%)
- Yellow (10%)
- Black (5%)



- Cyan (5%)
- Magenta (13%)
- Yellow (15%)

Brightness & Saturation Gradients

These gradients show how the YUV color 227.8120, -4.8373, 11.5659 changes by changing the brightness by 10 percent. The first figure shows a shift by +10% for each color and the second figure -10%.

Similar to the brightness gradients but the following saturation gradients show a change of the YUV color 227.8120, -4.8373, 11.5659 by changing the saturation by 10% instead.

■ 227.8120, -4.8373,
11.5659

■ 227.8120, -4.8373,
11.5659

255.0000, 0.0000,
0.0000

■ 199.8120, -4.8373,
11.5659

■ 172.5130, -4.6899,
10.9511

■ 145.6270, -4.2531,
10.8511

■ 120.3280, -4.1057,
10.2363

■ 95.0290, -3.9583,
9.6216

■ 71.7300, -3.8109,
9.0068

■ 49.4310, -3.6635,

8.3920

■ 28.2460, -3.0793,
7.6773

■ 4.1860, -2.0637,
8.6069

■ 227.8120, -4.8373,
11.5659

■ 227.8120, -4.8373,
11.5659

■ 213.9230, -9.8220,
23.7465

■ 241.7010, 0.1474,
-0.6148

■ 200.0340,
-14.8068, 35.9272

■ 250.8140, 2.0637,
-8.6069

■ 186.1450,
-19.7915, 48.1078

■ 172.8430,
-25.0656, 59.7737

■ 158.9540,
-30.0503, 71.9543

■ 144.9510,
-35.4718, 84.2350

■ 131.0620,
-40.4566, 96.4156

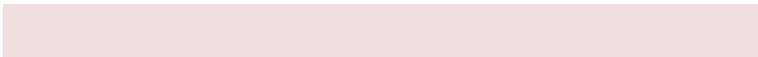
■ 117.1730,
-45.4413, 108.5963

■ 103.2840,
-50.4260, 120.7769

Harmonies

Analogous

The Analogous color harmony consists of three colors that are next to each other on the color wheel.



227.9090, -1.9271, 11.4808



227.8120, -4.8373, 11.5659



227.3340, -6.5737, 8.4771

Triad

The Triadic color harmony groups three colors that are evenly spaced from another and form a triangle on the color wheel.



227.8120, -4.8373, 11.5659



224.6030, -1.2833, -8.4218



226.6990, 6.5574, -3.2440

Complementary

The Complementary color scheme is a pair of colors which are on the opposite of each other on the color wheel.



227.8120, -4.8373, 11.5659



231.1880, 4.8373, -11.5659

Split Complementary

Split-complementary colors differ from the complementary color scheme. The scheme consists of three colors, the original color and two neighbors of the complement color.



225.9540, 6.4317, -9.6067



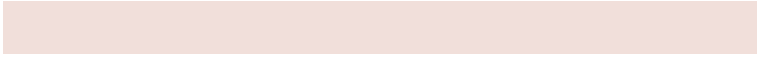
227.8120, -4.8373, 11.5659



224.7920, 2.0745, -12.0956

Square

The Square scheme is like the rectangle color scheme, but the four colors are evenly spaced on the color wheel.



227.8120, -4.8373, 11.5659



225.4250, -4.6465, -3.0037



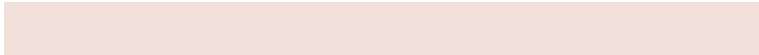
224.8890, 4.9847, -12.1807



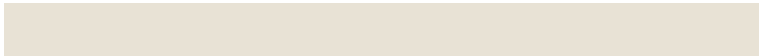
227.5750, 4.6465, 3.0037

Rectangle

The Rectangle color scheme consists of four colors that form a rectangle on the color wheel.



227.8120, -4.8373, 11.5659



226.3120, -6.5628, 4.9884



224.8890, 4.9847, -12.1807



226.3890, 6.7102, -5.6032

Sweetspot

The Sweet Spot groups the original color and five complimentary colors.



227.8120, -4.8373, 11.5659



250.5660, -1.7580, 3.8886



226.9290, 4.4720, 12.3403



124.9680, -1.4632, 2.6591



0.0000, 0.0000, 0.0000



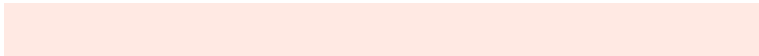
128.0000, 0.0000, 0.0000

Same Dimension

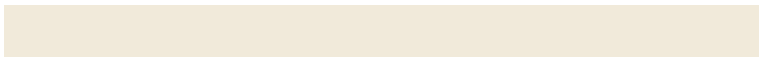
The Same Dimension uses a secret algorithm to generate beautiful new colors.



227.8120, -4.8373, 11.5659



238.8940, -5.8637, 14.1250



234.2690, -8.0206, 5.9031



112.7620, -2.3477, 6.3477



78.4960, -38.6985, 92.5270



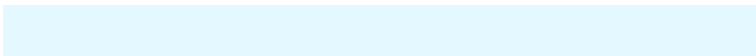
23.7880, -11.7275, 28.2499

Inverse Universe

The Inverse Universe completely reimagines the original color for something new.



231.1880, 4.8373, -11.5659



243.1060, 5.8637, -14.1250



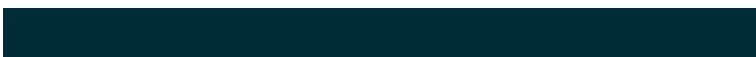
224.7310, 8.0206, -5.9031



114.6510, 2.6371, -5.8329



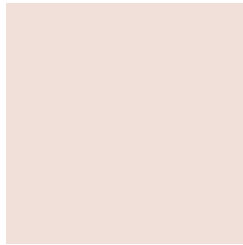
105.5040, 38.6985, -92.5270



32.2120, 11.7275, -28.2499

Previews

White Background



This preview shows how the YUV color 227.8120, -4.8373, 11.5659 looks on a white background.

Color Contrast Check

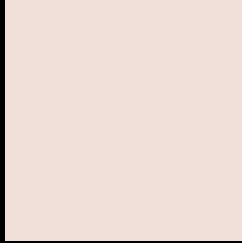
Large Text (above 18pt) WCAG AA × Fail

Any Text WCAG AA × Fail

Large Text (above 18pt) WCAG AAA × Fail

Any Text WCAG AAA × Fail

Black Background



This preview shows how the YUV color 227.8120, -4.8373, 11.5659 looks on a black background.

Color Contrast Check

Large Text (above 18pt) WCAG AA ✓ Pass

Any Text WCAG AA ✓ Pass

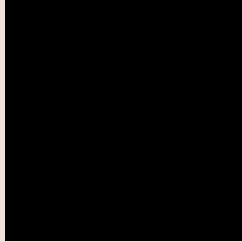
Large Text (above 18pt) WCAG AAA ✓ Pass

Any Text WCAG AAA ✓ Pass

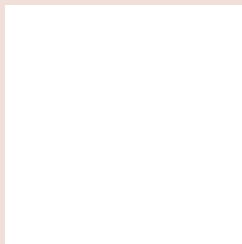
If you want to check with other color combinations, try the [Color Contrast Checker](#).

YUV 227.8120, -4.8373, 11.5659

Background



This preview shows how black text looks on a background with the YUV color 227.8120, -4.8373, 11.5659.

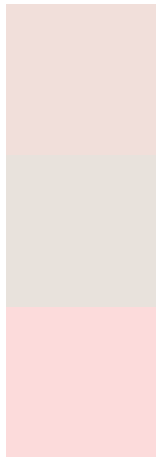


This preview shows how white text looks on a background with the YUV color 227.8120, -4.8373, 11.5659.

Color Blindness Simulation

Color vision deficiency is a very complex topic, and I could not describe the different causes any better than Wikipedia does, so if you want to learn more, you should check out their [article about color blindness](#).

Dichromacy



Original Color

227.8120, -4.8373, 11.5659

Protanopia

227.1100, -3.5052, 4.2885

Deuteranopia

228.8670, -4.8644, 20.2876



Tritanopia

229.1140, 3.8878, 13.0550

Trichromacy



Original Color

227.8120, -4.8373, 11.5659

Protanomaly

227.3060, -4.0949, 6.7476

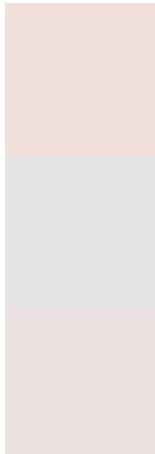
Deuteranomaly

228.2580, -4.5642, 17.3137

Tritanomaly

228.6040, 0.6882, 12.6253

Monochromacy



Original Color

227.8120, -4.8373, 11.5659

Achromatopsia

228.0000, 0.0000, 0.0000

Achromatomaly

227.8650, -1.9054, 4.5034

CSS Examples

Text

The CSS property to change the color of the text to YUV 227.8120, -4.8373, 11.5659 is called "color". The color property can be set on classes, ids or directly on the HTML element.

This example shows how text in the color `rgb(241, 223, 218)` looks like.

```
.text, #text, p{  
    color:rgb(241, 223, 218)  
}
```

If you want to add a text shadow in that color use the text-shadow property, you can generate a text shadow directly with our [CSS Text Shadow Generator](#).

Here you see how black text with a 4 pixel rgb(241, 223, 218) colored shadow looks like.

```
.shadow{ text-shadow: 4px 4px 2px rgb(241, 223, 218) }
```

Border

The CSS property to change the border of an element to YUV 227.8120, -4.8373, 11.5659 is called "border". The border property can be set on classes, ids or directly on the HTML element.

This example shows the color as border, it can be applied via the CSS property "border" or "border-color".

```
.border, #border, table{ border:4px solid rgb(241, 223, 218) }
```


If only the border color should be changed use the property `border-color`.

```
.border{ border-color:rgb(241, 223, 218) }
```

If you want to add a box shadow in that color use:

Here you see how a box with a 4 pixel `rgb(241, 223, 218)` colored shadow looks like.

```
.boxshadow{ -moz-box-shadow:4px 4px 4px  
4px rgb(241, 223, 218); -webkit-box-  
shadow:4px 4px 4px 4px rgb(241, 223, 218);  
box-shadow:4px 4px 4px 4px rgb(241, 223,  
218) }
```

Background

The CSS property to change the background color of an element to YUV 227.8120, -4.8373, 11.5659 is called "background". The background property can be set on classes, ids or directly on the HTML element.

```
.background, #background, body{  
background: rgb(241, 223, 218) }
```

If only the background color should be changed can be used:

```
.background{ background-color: rgb(241,  
223, 218) }
```

This example shows the color as background, it is applied via the CSS property "background".

To optimize and compress your CSS code, you can use our [online CSS compressor and optimizer](#) based on csstidy. If you want to create a linear or radial gradient as background or border, check our [CSS Gradient Generator](#).

Hey! You found this booklet interesting? Support Converting Colors with the new Membership Option!

The pro membership hides all ads, plus gives you double the colors in the color bucket, and more awesome pro features!

[Learn more, Memberships starting at \\$2.50/m!](#)

**Follow me
on Twitter!**

@ConvertingColor