

Converting Colors

YUV(23.5110, 1.7201, 8.3219)

Have a look what the booklet for
YUV(23.5110, 1.7201, 8.3219)
contains.

YUV(23.5110, 1.7201, 8.3219)	3
<i>Conversions</i>	4
<i>Details</i>	6
<i>Harmonies</i>	12
<i>Previews</i>	24
<i>Color Blindness Simulation</i>	28
<i>CSS Examples</i>	31

Color

**YUV(23.5110, 1.7201,
8.3219)**

Conversions

Conversions Part 1

Format	Color
Hex	21121B
RGB	33, 18, 27
RGB Percent	13%, 7%, 11%
CMY	0.8706, 0.9294, 0.8941
CMYK	0.00, 0.45, 0.18, 0.87
HSL	324°, 29%, 10%
HSV	324°, 45%, 13%
XYZ	1.0413, 0.8351, 1.1432
YIQ	23.5110, 6.0510, 5.9790

Conversions

Conversions Part 2

Format	Color
RYB	33, 18, 27
Decimal	2167323
CIELab	7.54, 9.57, -3.20
CIELCh	8, 10.093, 341.499
Yxy	0.8351, 0.3449, 0.2766
Android (android.graphics.Color)	4280357403 (0xFF21121B)
YUV	23.5110, 1.7201, 8.3219
Hunter-Lab	9.1383, 4.3487, -1.0205

Details

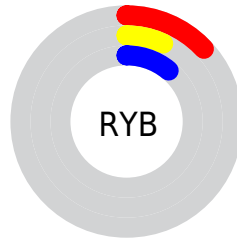
The YUV color **23.5110, 1.7201, 8.3219** is a dark color, and the websafe version is hex **000000**. A complement of this color would be **27.4890, -1.7201, -8.3219**, and the grayscale version is **23.0000, 0.0000, 0.0000**.

A 20% lighter version of the original color is **66.5220, 1.7147, 10.0662**, and **0.0000, 0.0000, 0.0000** is the 20% darker color. If you saturate the color by 10%, you get **21.6360, 2.1515, 9.9662**, and if you desaturate by 10%, it is **25.3860, 1.2887, 6.6775**.

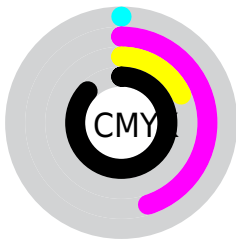
Distribution



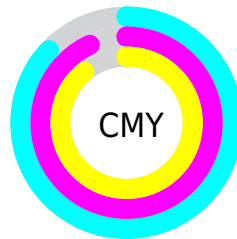
- Red (13%)
- Green (7%)
- Blue (11%)



- Red (13%)
- Yellow (7%)
- Blue (11%)



- Cyan (0%)
- Magenta (45%)
- Yellow (18%)
- Black (87%)



- Cyan (87%)
- Magenta (93%)
- Yellow (89%)

Brightness & Saturation Gradients

These gradients show how the YUV color 23.5110, 1.7201, 8.3219 changes by changing the brightness by 10 percent. The first figure shows a shift by +10% for each color and the second figure -10%.

Similar to the brightness gradients but the following saturation gradients show a change of the YUV color 23.5110, 1.7201, 8.3219 by changing the saturation by 10% instead.

■ 23.5110, 1.7201,
8.3219

■ 23.5110, 1.7201,
8.3219

■ 247.2550, 3.3253,
6.7924

■ 0.0000, 0.0000,
0.0000

■ 66.5220, 1.7147,
10.0662

■ 89.9350, 2.0040,
10.5810

■ 114.8210, 1.5672,
10.6810

■ 140.2340, 1.8566,
11.1958

■ 166.5330, 1.7092,
11.8106

■ 193.6470, 2.1460,

11.7106

■ 221.6470, 2.1460,
11.7106

■ 23.5110, 1.7201,
8.3219

■ 23.5110, 1.7201,
8.3219

■ 21.6360, 2.1515,
9.9662

■ 25.3860, 1.2887,
6.6775

■ 19.0600, 2.4354,
12.2254

■ 27.9620, 1.0047,
4.4183

■ 17.1850, 2.8668,
13.8698

■ 29.8370, 0.5734,
2.7740

■ 15.3100, 3.2982,
15.5141

■ 31.7120, 0.1420,
1.1296

■ 12.7340, 3.5821,
17.7733

■ 34.2880, -0.1420,
-1.1296

■ 12.1470, 3.8715,
18.2881

■ 36.1630, -0.5734,
-2.7740

■ 38.0380, -1.0047,
-4.4183

■ 40.0270, -0.9993,
-6.1627

■ 42.4890, -1.7201,
-8.3219

Harmonies

Analogous

The Analogous color harmony consists of three colors that are next to each other on the color wheel.



23.5750, 4.6465, 3.0037



23.5110, 1.7201, 8.3219



23.0230, -1.4903, 11.3808

Triad

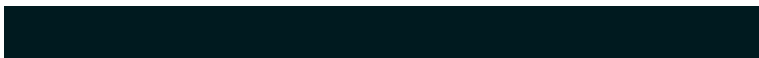
The Triadic color harmony groups three colors that are evenly spaced from another and form a triangle on the color wheel.



23.5110, 1.7201, 8.3219



21.6170, -9.1782, 3.8439



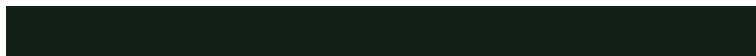
18.7960, 6.0166, -16.4841

Complementary

The Complementary color scheme is a pair of colors which are on the opposite of each other on the color wheel.



23.5110, 1.7201, 8.3219



27.4890, -1.7201, -8.3219

Split Complementary

Split-complementary colors differ from the complementary color scheme. The scheme consists of three colors, the original color and two neighbors of the complement color.



18.6990, 3.1064, -16.3990



23.5110, 1.7201, 8.3219



20.7840, -5.8095, -3.3186

Square

The Square scheme is like the rectangle color scheme, but the four colors are evenly spaced on the color wheel.



23.5110, 1.7201, 8.3219



22.3510, -9.0470, 8.4622



19.1080, -0.5462, -11.4957



20.4590, 7.1687, -12.6805

Rectangle

The Rectangle color scheme consists of four colors that form a rectangle on the color wheel.



23.5110, 1.7201, 8.3219



22.9260, -4.4005, 11.4659



19.1080, -0.5462, -11.4957



18.5680, 5.1430, -16.2841

Sweetspot

The Sweet Spot groups the original color and five complimentary colors.



23.5110, 1.7201, 8.3219



39.2500, 0.8628, 3.2888



21.5040, 5.6675, 2.1890



20.4240, 0.2840, 2.2592



150.0000, 0.0000, 0.0000



23.0000, 0.0000, 0.0000

Same Dimension

The Same Dimension uses a secret algorithm to generate beautiful new colors.



23.5110, 1.7201, 8.3219



28.4730, 2.7248, 12.7402



22.7130, -1.3375, 9.0217



14.4130, 0.2894, 0.5148



28.9790, 8.8844, 43.8684



76.0290, 23.6497, 114.8616

Inverse Universe

The Inverse Universe completely reimagines the original color for something new.



23.5110, 1.7201, 8.3219



28.4730, 2.7248, 12.7402



28.4010, 1.7743, -9.1217



14.4130, 0.2894, 0.5148



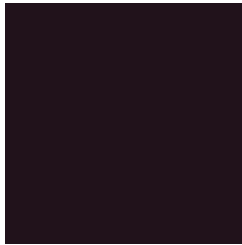
28.9790, 8.8844, 43.8684



76.0290, 23.6497, 114.8616

Previews

White Background



This preview shows how the YUV color 23.5110, 1.7201, 8.3219 looks on a white background.

Color Contrast Check

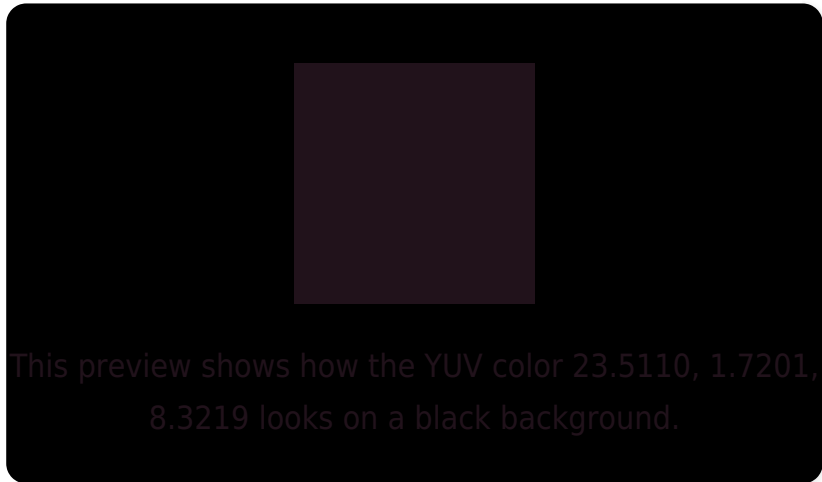
Large Text (above 18pt) WCAG AA ✓ Pass

Any Text WCAG AA ✓ Pass

Large Text (above 18pt) WCAG AAA ✓ Pass

Any Text WCAG AAA ✓ Pass

Black Background



Color Contrast Check

Large Text (above 18pt) WCAG AA × Fail

Any Text WCAG AA × Fail

Large Text (above 18pt) WCAG AAA × Fail

Any Text WCAG AAA × Fail

If you want to check with other color combinations, try the [Color Contrast Checker](#).

YUV 23.5110, 1.7201, 8.3219

Background



This preview shows how black text looks on a background with the YUV color 23.5110, 1.7201, 8.3219.

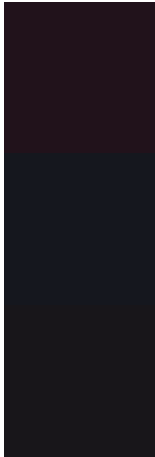


This preview shows how white text looks on a background with the YUV color 23.5110, 1.7201,

Color Blindness Simulation

Color vision deficiency is a very complex topic, and I could not describe the different causes any better than Wikipedia does, so if you want to learn more, you should check out their [article about color blindness](#).

Dichromacy



Original Color

23.5110, 1.7201, 8.3219

Protanopia

23.2000, 3.3524, -1.9294

Deuteranopia

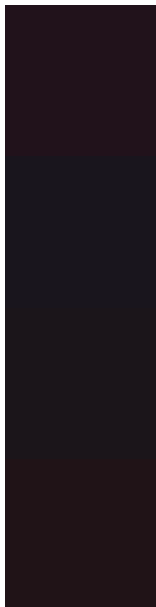
23.0540, 1.4524, 0.8296



Tritanopia

23.1150, -1.0427, 7.7921

Trichromacy



Original Color

23.5110, 1.7201, 8.3219

Protanomaly

23.1080, 2.9048, 1.6593

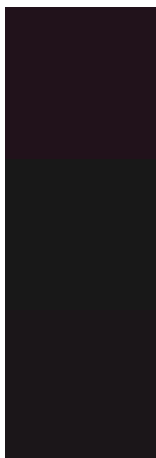
Deuteranomaly

23.3640, 1.2995, 3.1888

Tritanomaly

23.3430, -0.1691, 7.5922

Monochromacy



Original Color

23.5110, 1.7201, 8.3219

Achromatopsia

24.0000, 0.0000, 0.0000

Achromatomaly

23.8370, 0.5734, 2.7740

CSS Examples

Text

The CSS property to change the color of the text to YUV 23.5110, 1.7201, 8.3219 is called "color". The color property can be set on classes, ids or directly on the HTML element.

This example shows how text in the color `rgb(33, 18, 27)` looks like.

```
.text, #text, p{  
  color:rgb(33, 18, 27)  
}
```

If you want to add a text shadow in that color use the text-shadow property, you can generate a text shadow directly with our [CSS Text Shadow Generator](#).

Here you see how black text with a 4 pixel rgb(33, 18, 27) colored shadow looks like.

```
.shadow{ text-shadow: 4px 4px 2px rgb(33, 18, 27) }
```

Border

The CSS property to change the border of an element to YUV 23.5110, 1.7201, 8.3219 is called "border". The border property can be set on classes, ids or directly on the HTML element.

This example shows the color as border, it can be applied via the CSS property "border" or "border-color".

```
.border, #border, table{ border:4px solid rgb(33, 18, 27) }
```


If only the border color should be changed use the property border-color.

```
.border{ border-color:rgb(33, 18, 27) }
```

If you want to add a box shadow in that color use:

Here you see how a box with a 4 pixel rgb(33, 18, 27) colored shadow looks like.

```
.boxshadow{ -moz-box-shadow:4px 4px 4px  
4px rgb(33, 18, 27); -webkit-box-  
shadow:4px 4px 4px 4px rgb(33, 18, 27);  
box-shadow:4px 4px 4px 4px rgb(33, 18, 27)  
}
```

Background

The CSS property to change the background color of an element to YUV 23.5110, 1.7201, 8.3219 is called "background". The background property can be set on classes, ids or directly on the HTML element.

```
.background, #background, body{  
background: rgb(33, 18, 27) }
```

If only the background color should be changed can be used:

```
.background{ background-color: rgb(33, 18,  
27) }
```

This example shows the color as background, it is applied via the CSS property "background".

To optimize and compress your CSS code, you can use our [online CSS compressor and optimizer](#) based on csstidy. If you want to create a linear or radial gradient as background or border, check our [CSS Gradient Generator](#).

Hey! You found this booklet interesting? Support Converting Colors with the new Membership Option!

The pro membership hides all ads, plus gives you double the colors in the color bucket, and more awesome pro features!

[Learn more, Memberships starting at \\$2.50/m!](#)

**Follow me
on Twitter!**

@ConvertingColor