

Converting Colors

YUV(26.4810, -6.1531, 13.6102)

Have a look what the booklet for
YUV(26.4810, -6.1531, 13.6102)
contains.

YUV(26.4810, -6.1531, 13.6102)	3
<i>Conversions</i>	4
<i>Details</i>	6
<i>Harmonies</i>	12
<i>Previews</i>	24
<i>Color Blindness Simulation</i>	28
<i>CSS Examples</i>	31

Color

**YUV(26.4810, -6.1531,
13.6102)**

Conversions

Conversions Part 1

Format	Color
Hex	2A150E
RGB	42, 21, 14
RGB Percent	16%, 8%, 5%
CMY	0.8353, 0.9176, 0.9451
CMYK	0.00, 0.50, 0.67, 0.84
HSL	15°, 50%, 11%
HSV	15°, 67%, 16%
XYZ	1.3023, 1.0603, 0.5515
YIQ	26.4810, 14.7630, 2.2750

Conversions

Conversions Part 2

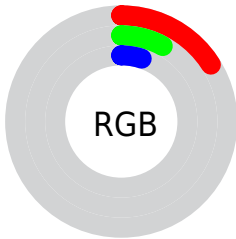
Format	Color
RYB	42, 23, 14
Decimal	2757902
CIELab	9.48, 9.80, 8.46
CIELCh	9, 12.949, 40.814
Yxy	1.0603, 0.4469, 0.3639
Android (android.graphics.Color)	4280947982 (0xFF2A150E)
YUV	26.4810, -6.1531, 13.6102
Hunter-Lab	10.2970, 4.5555, 4.0325

Details

The YUV color **26.4810, -6.1531, 13.6102** is a dark color, and the websafe version is hex **330000**. A complement of this color would be **29.5190, 6.1531, -13.6102**, and the grayscale version is **27.0000, 0.0000, 0.0000**.

A 20% lighter version of the original color is **70.6770, -6.7428, 16.0693**, and **0.0000, 0.0000, 0.0000** is the 20% darker color. If you saturate the color by 10%, you get **24.2640, -7.0322, 15.5545**, and if you desaturate by 10%, it is **28.6980, -5.2741, 11.6659**.

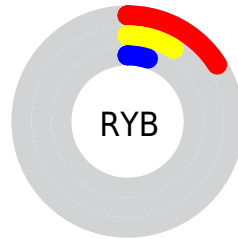
Distribution



Red (16%)

Green (8%)

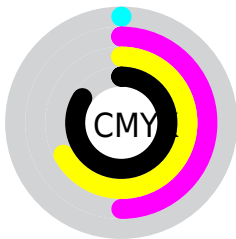
Blue (5%)



Red (16%)

Yellow (9%)

Blue (5%)

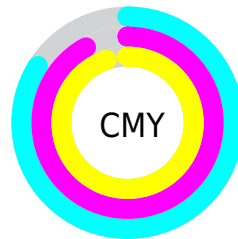


Cyan (0%)

Magenta (50%)

Yellow (67%)

Black (84%)



Cyan (84%)

Magenta (92%)

Yellow (95%)

Brightness & Saturation Gradients

These gradients show how the YUV color 26.4810, -6.1531, 13.6102 changes by changing the brightness by 10 percent. The first figure shows a shift by +10% for each color and the second figure -10%.

Similar to the brightness gradients but the following saturation gradients show a change of the YUV color 26.4810, -6.1531, 13.6102 by changing the saturation by 10% instead.

■ 26.4810, -6.1531,
13.6102

■ 26.4810, -6.1531,
13.6102

■ 248.3660, -5.1104,
5.8180

■ 5.3820, -2.6533,
11.0660

■ 70.6770, -6.7428,
16.0693

■ 0.0000, 0.0000,
0.0000

■ 94.2750, -7.0376,
17.2988

■ 118.5740, -7.1850,
17.9136

■ 144.7590, -7.7692,
18.6284

■ 171.3570, -8.0640,
19.8579

■ 198.6560, -8.2114,

20.4727

■ 226.5420, -8.6482,
20.5727

■ 26.4810, -6.1531,
13.6102

■ 26.4810, -6.1531,
13.6102

■ 24.2640, -7.0322,
15.5545

■ 28.6980, -5.2741,
11.6659

■ 22.0470, -7.9112,
17.4988

■ 30.9150, -4.3951,
9.7215

■ 19.7160, -9.2270,
19.5431

■ 33.2460, -3.0793,
7.6773

■ 18.4280, -9.0850,
20.6726

■ 36.0500, -2.4896,
5.2182

■ 38.2670, -1.6106,
3.2738

■ 40.4840, -0.7316,
1.3295

■ 42.7010, 0.1474,
-0.6148

■ 45.0320, 1.4632,
-2.6591

■ 47.2490, 2.3422,
-4.6034

Harmonies

Analogous

The Analogous color harmony consists of three colors that are next to each other on the color wheel.



26.7460, -1.3538, 14.2548



26.4810, -6.1531, 13.6102



25.7210, -10.2155, 9.8917

Triad

The Triadic color harmony groups three colors that are evenly spaced from another and form a triangle on the color wheel.



26.4810, -6.1531, 13.6102



22.5700, -1.2670, -13.6549



25.5460, 8.6048, -6.6178

Complementary

The Complementary color scheme is a pair of colors which are on the opposite of each other on the color wheel.



26.4810, -6.1531, 13.6102



29.5190, 6.1531, -13.6102

Split Complementary

Split-complementary colors differ from the complementary color scheme. The scheme consists of three colors, the original color and two neighbors of the complement color.



22.5230, 10.0952, -17.9987



26.4810, -6.1531, 13.6102



21.5030, 3.6960, -18.8581

Square

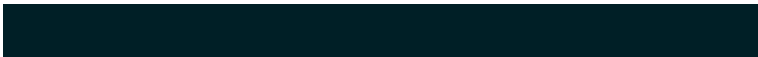
The Square scheme is like the rectangle color scheme, but the four colors are evenly spaced on the color wheel.



26.4810, -6.1531, 13.6102



24.1430, -6.9725, -3.6334



22.5290, 7.6272, -19.7579



27.3300, 6.2463, 3.2186

Rectangle

The Rectangle color scheme consists of four colors that form a rectangle on the color wheel.



26.4810, -6.1531, 13.6102



25.4710, -11.0782, 6.6029



22.5290, 7.6272, -19.7579



24.7520, 9.4893, -10.3065

Sweetspot

The Sweet Spot groups the original color and five complimentary colors.



26.4810, -6.1531, 13.6102



48.0500, -2.4896, 5.2182



24.7660, 5.0454, 15.1142



24.2670, -1.6106, 3.2738



156.0000, 0.0000, 0.0000



28.0000, 0.0000, 0.0000

Same Dimension

The Same Dimension uses a secret algorithm to generate beautiful new colors.



26.4810, -6.1531, 13.6102



29.7270, -9.2324, 21.2874



34.6990, -10.2046, 6.4030



19.1850, -0.5842, 0.7148



37.4430, -18.4594, 40.8305



94.4990, -46.5880, 103.0484

Inverse Universe

The Inverse Universe completely reimagines the original color for something new.



29.5190, 6.1531, -13.6102



34.6860, 9.5218, -20.7726



21.3010, 10.2046, -6.4030



19.4020, 0.2948, -1.2296



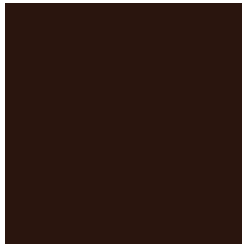
46.5570, 18.4594, -40.8305



117.5010, 46.5880, -103.0484

Previews

White Background



This preview shows how the YUV color 26.4810, -6.1531, 13.6102 looks on a white background.

Color Contrast Check

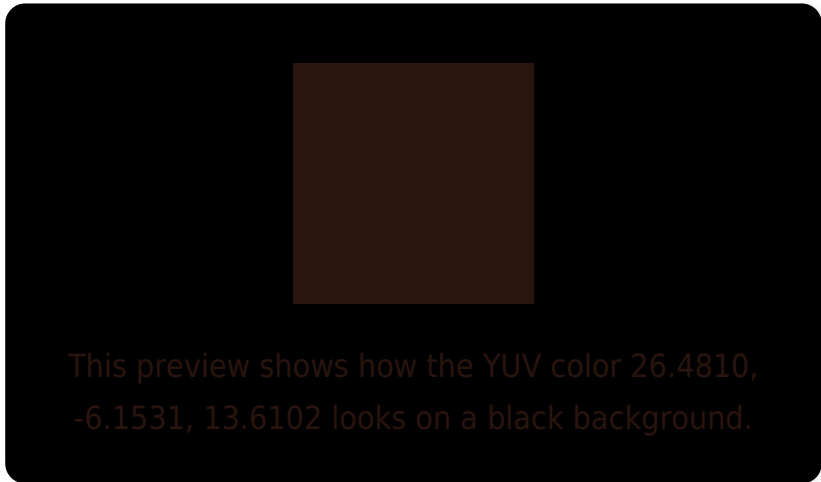
Large Text (above 18pt) WCAG AA ✓ Pass

Any Text WCAG AA ✓ Pass

Large Text (above 18pt) WCAG AAA ✓ Pass

Any Text WCAG AAA ✓ Pass

Black Background



Color Contrast Check

Large Text (above 18pt) WCAG AA × Fail

Any Text WCAG AA × Fail

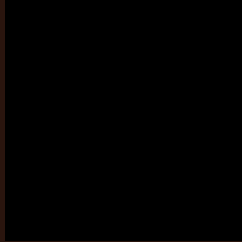
Large Text (above 18pt) WCAG AAA × Fail

Any Text WCAG AAA × Fail

If you want to check with other color combinations, try the [Color Contrast Checker](#).

YUV 26.4810, -6.1531, 13.6102

Background



This preview shows how black text looks on a background with the YUV color 26.4810, -6.1531, 13.6102.



This preview shows how white text looks on a background with the YUV color 26.4810, -6.1531,

Color Blindness Simulation

Color vision deficiency is a very complex topic, and I could not describe the different causes any better than Wikipedia does, so if you want to learn more, you should check out their [article about color blindness](#).

Dichromacy



Original Color

26.4810, -6.1531, 13.6102

Protanopia

26.6430, -5.2470, 2.9441

Deuteranopia

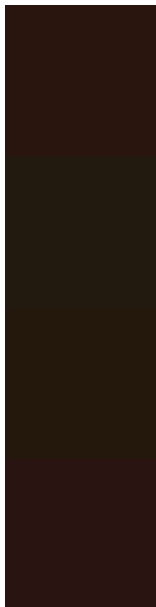
26.6110, -6.7102, 5.6032



Tritanopia

26.6920, -2.8062, 13.4251

Trichromacy



Original Color

26.4810, -6.1531, 13.6102

Protanomaly

26.5510, -5.6946, 6.5328

Deuteranomaly

26.3340, -6.5737, 8.4771

Tritanomaly

26.3500, -4.1165, 13.7251

Monochromacy



Original Color

26.4810, -6.1531, 13.6102

Achromatopsia

26.0000, 0.0000, 0.0000

Achromatomaly

26.1640, -2.0529, 5.1182

CSS Examples

Text

The CSS property to change the color of the text to YUV 26.4810, -6.1531, 13.6102 is called "color". The color property can be set on classes, ids or directly on the HTML element.

This example shows how text in the color `rgb(42, 21, 14)` looks like.

```
.text, #text, p{  
    color:rgb(42, 21, 14)  
}
```

If you want to add a text shadow in that color use the text-shadow property, you can generate a text shadow directly with our [CSS Text Shadow Generator](#).

Here you see how black text with a 4 pixel rgb(42, 21, 14) colored shadow looks like.

```
.shadow{ text-shadow: 4px 4px 2px rgb(42, 21, 14) }
```

Border

The CSS property to change the border of an element to YUV 26.4810, -6.1531, 13.6102 is called "border". The border property can be set on classes, ids or directly on the HTML element.

This example shows the color as border, it can be applied via the CSS property "border" or "border-color".

```
.border, #border, table{ border:4px solid rgb(42, 21, 14) }
```


If only the border color should be changed use the property `border-color`.

```
.border{ border-color:rgb(42, 21, 14) }
```

If you want to add a box shadow in that color use:

Here you see how a box with a 4 pixel `rgb(42, 21, 14)` colored shadow looks like.

```
.boxshadow{ -moz-box-shadow:4px 4px 4px  
4px rgb(42, 21, 14); -webkit-box-  
shadow:4px 4px 4px 4px rgb(42, 21, 14);  
box-shadow:4px 4px 4px 4px rgb(42, 21, 14)  
}
```

Background

The CSS property to change the background color of an element to YUV 26.4810, -6.1531, 13.6102 is called "background". The background property can be set on classes, ids or directly on the HTML element.

```
.background, #background, body{  
background: rgb(42, 21, 14) }
```

If only the background color should be changed can be used:

```
.background{ background-color: rgb(42, 21,  
14) }
```

This example shows the color as background, it is applied via the CSS property "background".

To optimize and compress your CSS code, you can use our [online CSS compressor and optimizer](#) based on csstidy. If you want to create a linear or radial gradient as background or border, check our [CSS Gradient Generator](#).

Hey! You found this booklet interesting? Support Converting Colors with the new Membership Option!

The pro membership hides all ads, plus gives you double the colors in the color bucket, and more awesome pro features!

[Learn more, Memberships starting at \\$2.50/m!](#)

**Follow me
on Twitter!**

@ConvertingColor