

Converting Colors

YUV(26.5620, -5.7001, 8.2771)

Have a look what the booklet for
YUV(26.5620, -5.7001, 8.2771)
contains.

YUV(26.5620, -5.7001, 8.2771)	3
<i>Conversions</i>	4
<i>Details</i>	6
<i>Harmonies</i>	12
<i>Previews</i>	24
<i>Color Blindness Simulation</i>	28
<i>CSS Examples</i>	31

Color

**YUV(26.5620, -5.7001,
8.2771)**

Conversions

Conversions Part 1

Format	Color
Hex	24180F
RGB	36, 24, 15
RGB Percent	14%, 9%, 6%
CMY	0.8588, 0.9059, 0.9412
CMYK	0.00, 0.33, 0.58, 0.86
HSL	26°, 41%, 10%
HSV	26°, 58%, 14%
XYZ	1.1404, 1.0628, 0.5970
YIQ	26.5620, 10.0410, -0.2550

Conversions

Conversions Part 2

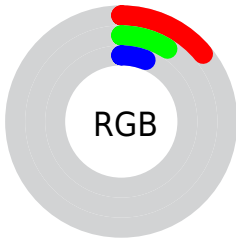
Format	Color
R_{YB}	36, 31, 15
Decimal	2365455
CIE _{Lab}	9.50, 4.53, 7.85
CIE _{LCh}	10, 9.064, 59.981
Yxy	1.0628, 0.4073, 0.3796
Android (android.graphics.Color)	4280555535 (0xFF24180F)
YUV	26.5620, -5.7001, 8.2771
Hunter-Lab	10.3093, 1.7042, 3.7833

Details

The YUV color **26.5620, -5.7001, 8.2771** is a dark color, and the websafe version is hex **000000**. A complement of this color would be **24.4380, 5.7001, -8.2771**, and the grayscale version is **27.0000, 0.0000, 0.0000**.

A 20% lighter version of the original color is **70.1600, -5.9949, 9.5067**, and **0.0000, 0.0000, 0.0000** is the 20% darker color. If you saturate the color by 10%, you get **24.9320, -6.8685, 9.7066**, and if you desaturate by 10%, it is **28.1920, -4.5317, 6.8476**.

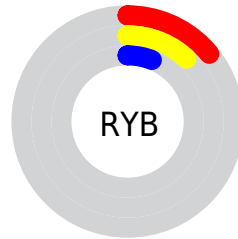
Distribution



Red (14%)

Green (9%)

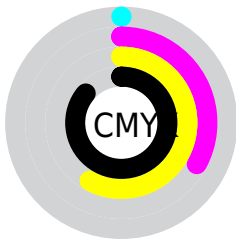
Blue (6%)



Red (14%)

Yellow (12%)

Blue (6%)

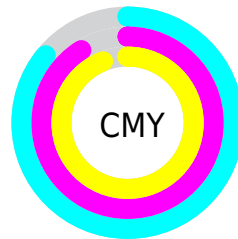


Cyan (0%)

Magenta (33%)

Yellow (58%)

Black (86%)



Cyan (86%)

Magenta (91%)

Yellow (94%)

Brightness & Saturation Gradients

These gradients show how the YUV color 26.5620, -5.7001, 8.2771 changes by changing the brightness by 10 percent. The first figure shows a shift by +10% for each color and the second figure -10%.

Similar to the brightness gradients but the following saturation gradients show a change of the YUV color 26.5620, -5.7001, 8.2771 by changing the saturation by 10% instead.

■ 26.5620, -5.7001,
8.2771

■ 26.5620, -5.7001,
8.2771

■ 250.2410, -5.5418,
4.1736

■ 1.7940, -0.8844,
3.6887

■ 70.1600, -5.9949,
9.5067

■ 0.0000, 0.0000,
0.0000

■ 93.4590, -6.1423,
10.1215

■ 118.6440, -6.7265,
10.8362

■ 143.9430, -6.8739,
11.4510

■ 170.8290, -7.3107,
11.5510

■ 198.1280, -7.4581,

12.1657

■ 226.0140, -7.8949,
12.2657

■ 26.5620, -5.7001,
8.2771

■ 26.5620, -5.7001,
8.2771

■ 24.9320, -6.8685,
9.7066

■ 28.1920, -4.5317,
6.8476

■ 23.4160, -7.6001,
11.0362

■ 29.7080, -3.8000,
5.5181

■ 21.7860, -8.7685,
12.4657

■ 31.3380, -2.6316,
4.0886

■ 20.2700, -9.5001,
13.7952

■ 32.8540, -1.9000,
2.7590

■ 19.5690, -9.6475,
14.4100

■ 34.4840, -0.7316,
1.3295

■ 36.1140, 0.4368,
-0.1000

■ 37.6300, 1.1684,
-1.4295

■ 39.2600, 2.3368,
-2.8590

■ 41.3630, 2.7790,
-4.7034

Harmonies

Analogous

The Analogous color harmony consists of three colors that are next to each other on the color wheel.



26.6700, -2.7953, 9.9364



26.5620, -5.7001, 8.2771



25.8990, -6.8522, 4.4736

Triad

The Triadic color harmony groups three colors that are evenly spaced from another and form a triangle on the color wheel.



26.5620, -5.7001, 8.2771



23.5640, 1.2009, -11.8956



26.9660, 4.9468, 0.0298

Complementary

The Complementary color scheme is a pair of colors which are on the opposite of each other on the color wheel.



26.5620, -5.7001, 8.2771



24.4380, 5.7001, -8.2771

Split Complementary

Split-complementary colors differ from the complementary color scheme. The scheme consists of three colors, the original color and two neighbors of the complement color.



25.6770, 6.5682, -6.7327



26.5620, -5.7001, 8.2771



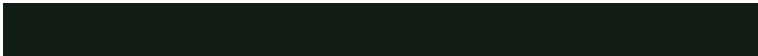
23.3510, 4.2640, -14.3398

Square

The Square scheme is like the rectangle color scheme, but the four colors are evenly spaced on the color wheel.



26.5620, -5.7001, 8.2771



24.3860, -2.1623, -6.4775



24.2310, 6.2951, -12.4806



27.4290, 2.7465, 5.7628

Rectangle

The Rectangle color scheme consists of four colors that form a rectangle on the color wheel.



26.5620, -5.7001, 8.2771



25.4040, -6.1152, 1.3997



24.2310, 6.2951, -12.4806



27.0690, 5.3890, -1.8145

Sweetspot

The Sweet Spot groups the original color and five complimentary colors.



26.5620, -5.7001, 8.2771



42.1530, -2.0474, 3.3738



22.6470, 2.1460, 11.7106



20.6690, -1.3158, 2.0443



150.0000, 0.0000, 0.0000



23.0000, 0.0000, 0.0000

Same Dimension

The Same Dimension uses a secret algorithm to generate beautiful new colors.



26.5620, -5.7001, 8.2771



31.7860, -8.7685, 12.4657



32.4320, -8.5940, 3.1291



17.1850, -0.5842, 0.7148



45.0630, -22.2161, 32.3937



115.3210, -56.8533, 82.1565

Inverse Universe

The Inverse Universe completely reimagines the original color for something new.



24.4380, 5.7001, -8.2771



28.2140, 8.7685, -12.4657



18.5680, 8.5940, -3.1291



16.8150, 0.5842, -0.7148



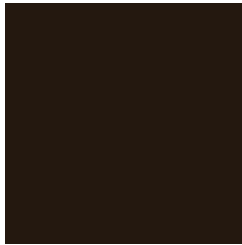
36.9370, 22.2161, -32.3937



93.6790, 56.8533, -82.1565

Previews

White Background



This preview shows how the YUV color 26.5620, -5.7001, 8.2771 looks on a white background.

Color Contrast Check

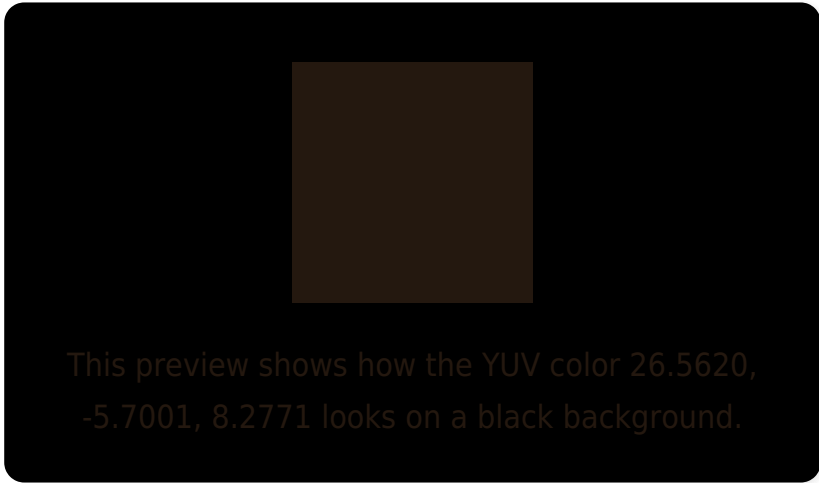
Large Text (above 18pt) WCAG AA ✓ Pass

Any Text WCAG AA ✓ Pass

Large Text (above 18pt) WCAG AAA ✓ Pass

Any Text WCAG AAA ✓ Pass

Black Background



Color Contrast Check

Large Text (above 18pt) WCAG AA × Fail

Any Text WCAG AA × Fail

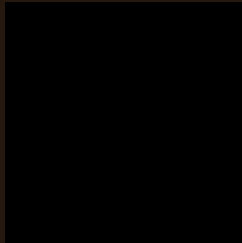
Large Text (above 18pt) WCAG AAA × Fail

Any Text WCAG AAA × Fail

If you want to check with other color combinations, try the [Color Contrast Checker](#).

YUV 26.5620, -5.7001, 8.2771

Background



This preview shows how black text looks on a background with the YUV color 26.5620, -5.7001, 8.2771.



This preview shows how white text looks on a background with the YUV color 26.5620, -5.7001,

Color Blindness Simulation

Color vision deficiency is a very complex topic, and I could not describe the different causes any better than Wikipedia does, so if you want to learn more, you should check out their [article about color blindness](#).

Dichromacy



Original Color

26.5620, -5.7001, 8.2771

Protanopia

26.3440, -5.0996, 2.3293

Deuteranopia

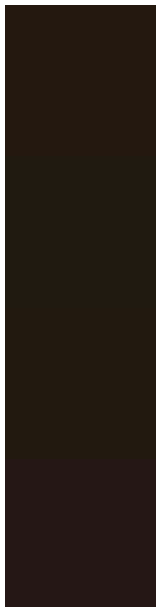
26.8390, -5.8366, 5.4032



Tritanopia

27.4140, -1.1901, 8.4069

Trichromacy



Original Color

26.5620, -5.7001, 8.2771

Protanomaly

26.6540, -5.2524, 4.6884

Deuteranomaly

26.5510, -5.6946, 6.5328

Tritanomaly

26.9580, -2.9373, 8.8068

Monochromacy



Original Color

26.5620, -5.7001, 8.2771

Achromatopsia

27.0000, 0.0000, 0.0000

Achromatomaly

26.8540, -1.9000, 2.7590

CSS Examples

Text

The CSS property to change the color of the text to YUV 26.5620, -5.7001, 8.2771 is called "color". The color property can be set on classes, ids or directly on the HTML element.

This example shows how text in the color `rgb(36, 24, 15)` looks like.

```
.text, #text, p{  
    color:rgb(36, 24, 15)  
}
```

If you want to add a text shadow in that color use the text-shadow property, you can generate a text shadow directly with our [CSS Text Shadow Generator](#).

Here you see how black text with a 4 pixel rgb(36, 24, 15) colored shadow looks like.

```
.shadow{ text-shadow: 4px 4px 2px rgb(36, 24, 15) }
```

Border

The CSS property to change the border of an element to YUV 26.5620, -5.7001, 8.2771 is called "border". The border property can be set on classes, ids or directly on the HTML element.

This example shows the color as border, it can be applied via the CSS property "border" or "border-color".

```
.border, #border, table{ border:4px solid rgb(36, 24, 15) }
```


If only the border color should be changed use the property `border-color`.

```
.border{ border-color:rgb(36, 24, 15) }
```

If you want to add a box shadow in that color use:

Here you see how a box with a 4 pixel `rgb(36, 24, 15)` colored shadow looks like.

```
.boxshadow{ -moz-box-shadow:4px 4px 4px  
4px rgb(36, 24, 15); -webkit-box-  
shadow:4px 4px 4px 4px rgb(36, 24, 15);  
box-shadow:4px 4px 4px 4px rgb(36, 24, 15)  
}
```

Background

The CSS property to change the background color of an element to YUV 26.5620, -5.7001, 8.2771 is called "background". The background property can be set on classes, ids or directly on the HTML element.

```
.background, #background, body{  
background: rgb(36, 24, 15) }
```

If only the background color should be changed can be used:

```
.background{ background-color: rgb(36, 24,  
15) }
```

This example shows the color as background, it is applied via the CSS property "background".

To optimize and compress your CSS code, you can use our [online CSS compressor and optimizer](#) based on csstidy. If you want to create a linear or radial gradient as background or border, check our [CSS Gradient Generator](#).

Hey! You found this booklet interesting? Support Converting Colors with the new Membership Option!

The pro membership hides all ads, plus gives you double the colors in the color bucket, and more awesome pro features!

[Learn more, Memberships starting at \\$2.50/m!](#)

**Follow me
on Twitter!**

@ConvertingColor