

Converting Colors

YUV(27.0460, -6.4317, 9.6067)

Have a look what the booklet for
YUV(27.0460, -6.4317, 9.6067)
contains.

YUV(27.0460, -6.4317, 9.6067)	3
<i>Conversions</i>	4
<i>Details</i>	6
<i>Harmonies</i>	12
<i>Previews</i>	24
<i>Color Blindness Simulation</i>	28
<i>CSS Examples</i>	31

Color

**YUV(27.0460, -6.4317,
9.6067)**

Conversions

Conversions Part 1

Format	Color
Hex	26180E
RGB	38, 24, 14
RGB Percent	15%, 9%, 5%
CMY	0.8510, 0.9059, 0.9451
CMYK	0.00, 0.37, 0.63, 0.85
HSL	25°, 46%, 10%
HSV	25°, 63%, 15%
XYZ	1.2052, 1.0970, 0.5637
YIQ	27.0460, 11.5540, -0.1420

Conversions

Conversions Part 2

Format	Color
R_{YB}	38, 31, 14
Decimal	2496526
CIE Lab	9.78, 5.50, 8.79
CIE LCh	10, 10.367, 57.987
Yxy	1.0970, 0.4205, 0.3828
Android (android.graphics.Color)	4280686606 (0xFF26180E)
YUV	27.0460, -6.4317, 9.6067
Hunter-Lab	10.4740, 2.2103, 4.1409

Details

The YUV color **27.0460, -6.4317, 9.6067** is a dark color, and the websafe version is hex **000000**. A complement of this color would be **24.9540, 6.4317, -9.6067**, and the grayscale version is **27.0000, 0.0000, 0.0000**.

A 20% lighter version of the original color is **70.9430, -6.8739, 11.4510**, and **0.0000, 0.0000, 0.0000** is the 20% darker color. If you saturate the color by 10%, you get **25.4160, -7.6001, 11.0362**, and if you desaturate by 10%, it is **28.6760, -5.2633, 8.1771**.

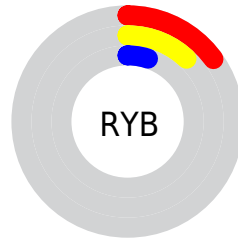
Distribution



Red (15%)

Green (9%)

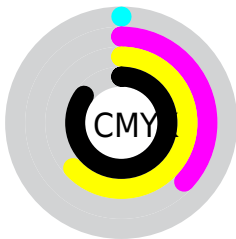
Blue (5%)



Red (15%)

Yellow (12%)

Blue (5%)

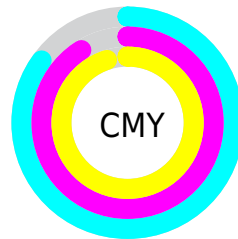


Cyan (0%)

Magenta (37%)

Yellow (63%)

Black (85%)



Cyan (85%)

Magenta (91%)

Yellow (95%)

Brightness & Saturation Gradients

These gradients show how the YUV color 27.0460, -6.4317, 9.6067 changes by changing the brightness by 10 percent. The first figure shows a shift by +10% for each color and the second figure -10%.

Similar to the brightness gradients but the following saturation gradients show a change of the YUV color 27.0460, -6.4317, 9.6067 by changing the saturation by 10% instead.

■ 27.0460, -6.4317,
9.6067

■ 27.0460, -6.4317,
9.6067

■ 250.1270, -5.9786,
4.2736

■ 3.5880, -1.7689,
7.3773

■ 70.9430, -6.8739,
11.4510

■ 0.0000, 0.0000,
0.0000

■ 94.2420, -7.0213,
12.0658

■ 119.4270, -7.6055,
12.7805

■ 144.7260, -7.7529,
13.3953

■ 171.6120, -8.1897,
13.4953

■ 198.9110, -8.3371,

14.1101

■ 226.7970, -8.7739,
14.2100

■ 27.0460, -6.4317,
9.6067

■ 27.0460, -6.4317,
9.6067

■ 25.4160, -7.6001,
11.0362

■ 28.6760, -5.2633,
8.1771

■ 23.7860, -8.7685,
12.4657

■ 30.3060, -4.0949,
6.7476

■ 21.6830, -9.2107,
14.3100

■ 32.4090, -3.6526,
4.9033

■ 20.7540, -10.2317,
15.1247

■ 34.0390, -2.4842,
3.4738

■ 35.6690, -1.3158,
2.0443

■ 37.2990, -0.1474,
0.6148

■ 39.5160, 0.7316,
-1.3295

■ 41.0320, 1.4632,
-2.6591

■ 42.6620, 2.6316,
-4.0886

Harmonies

Analogous

The Analogous color harmony consists of three colors that are next to each other on the color wheel.



27.5670, -3.2375, 11.7807



27.0460, -6.4317, 9.6067



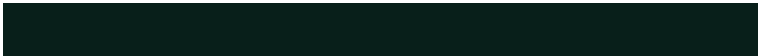
26.2690, -8.0206, 5.9031

Triad

The Triadic color harmony groups three colors that are evenly spaced from another and form a triangle on the color wheel.



27.0460, -6.4317, 9.6067



23.5530, 1.2064, -13.6400



27.1940, 5.8204, -0.1701

Complementary

The Complementary color scheme is a pair of colors which are on the opposite of each other on the color wheel.



27.0460, -6.4317, 9.6067



24.9540, 6.4317, -9.6067

Split Complementary

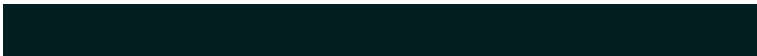
Split-complementary colors differ from the complementary color scheme. The scheme consists of three colors, the original color and two neighbors of the complement color.



26.1930, 7.2999, -8.0623



27.0460, -6.4317, 9.6067



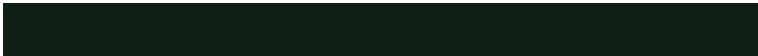
23.1550, 4.8536, -16.7989

Square

The Square scheme is like the rectangle color scheme, but the four colors are evenly spaced on the color wheel.



27.0460, -6.4317, 9.6067



24.8590, -2.8885, -6.8923



23.8500, 7.4689, -15.6545



27.9560, 3.4727, 6.1776

Rectangle

The Rectangle color scheme consists of four colors that form a rectangle on the color wheel.



27.0460, -6.4317, 9.6067



26.0620, -7.4256, 1.6996



23.8500, 7.4689, -15.6545



26.9980, 6.4100, -2.6292

Sweetspot

The Sweet Spot groups the original color and five complimentary colors.



27.0460, -6.4317, 9.6067



44.0390, -2.4842, 3.4738



22.7720, 2.5774, 13.3550



22.9680, -1.4632, 2.6591



153.0000, 0.0000, 0.0000



26.0000, 0.0000, 0.0000

Same Dimension

The Same Dimension uses a secret algorithm to generate beautiful new colors.



27.0460, -6.4317, 9.6067



31.5690, -9.6475, 14.4100



34.0900, -9.9044, 3.4291



17.1850, -0.5842, 0.7148



44.4760, -21.9267, 32.9085



113.5600, -55.9851, 83.7009

Inverse Universe

The Inverse Universe completely reimagines the original color for something new.



24.9540, 6.4317, -9.6067



28.4310, 9.6475, -14.4100



17.9100, 9.9044, -3.4291



16.8150, 0.5842, -0.7148



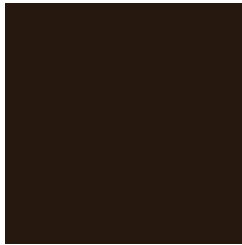
37.5240, 21.9267, -32.9085



95.4400, 55.9851, -83.7009

Previews

White Background



This preview shows how the YUV color 27.0460, -6.4317, 9.6067 looks on a white background.

Color Contrast Check

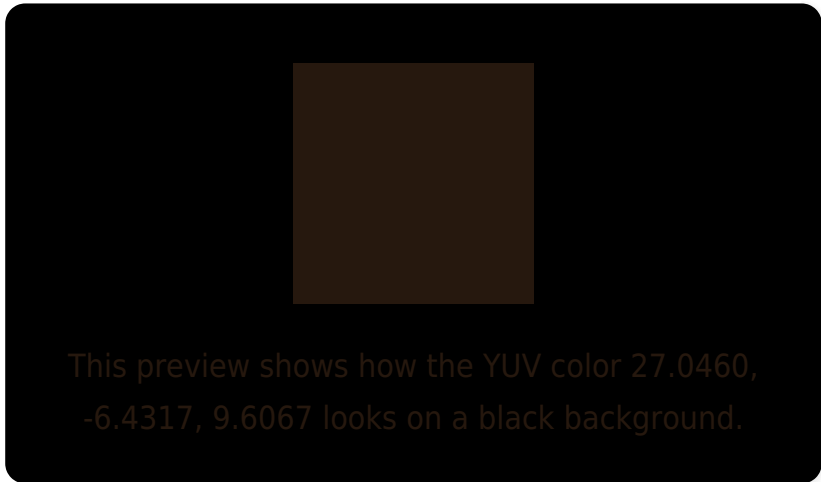
Large Text (above 18pt) WCAG AA ✓ Pass

Any Text WCAG AA ✓ Pass

Large Text (above 18pt) WCAG AAA ✓ Pass

Any Text WCAG AAA ✓ Pass

Black Background



Color Contrast Check

Large Text (above 18pt) WCAG AA × Fail

Any Text WCAG AA × Fail

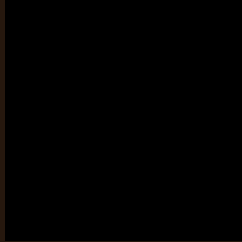
Large Text (above 18pt) WCAG AAA × Fail

Any Text WCAG AAA × Fail

If you want to check with other color combinations, try the [Color Contrast Checker](#).

YUV 27.0460, -6.4317, 9.6067

Background



This preview shows how black text looks on a background with the YUV color 27.0460, -6.4317, 9.6067.



This preview shows how white text looks on a background with the YUV color 27.0460, -6.4317,

Color Blindness Simulation

Color vision deficiency is a very complex topic, and I could not describe the different causes any better than Wikipedia does, so if you want to learn more, you should check out their [article about color blindness](#).

Dichromacy



Original Color

27.0460, -6.4317, 9.6067

Protanopia

26.5290, -5.6838, 3.0441

Deuteranopia

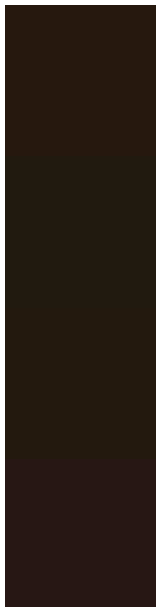
27.0240, -6.4208, 6.1180



Tritanopia

27.8980, -1.9217, 9.7365

Trichromacy



Original Color

27.0460, -6.4317, 9.6067

Protanomaly

26.8390, -5.8366, 5.4032

Deuteranomaly

26.7360, -6.2788, 7.2475

Tritanomaly

27.4420, -3.6689, 10.1364

Monochromacy



Original Color

27.0460, -6.4317, 9.6067

Achromatopsia

27.0000, 0.0000, 0.0000

Achromatomaly

27.0390, -2.4842, 3.4738

CSS Examples

Text

The CSS property to change the color of the text to YUV 27.0460, -6.4317, 9.6067 is called "color". The color property can be set on classes, ids or directly on the HTML element.

This example shows how text in the color `rgb(38, 24, 14)` looks like.

```
.text, #text, p{  
    color:rgb(38, 24, 14)  
}
```

If you want to add a text shadow in that color use the text-shadow property, you can generate a text shadow directly with our [CSS Text Shadow Generator](#).

Here you see how black text with a 4 pixel rgb(38, 24, 14) colored shadow looks like.

```
.shadow{ text-shadow: 4px 4px 2px rgb(38, 24, 14) }
```

Border

The CSS property to change the border of an element to YUV 27.0460, -6.4317, 9.6067 is called "border". The border property can be set on classes, ids or directly on the HTML element.

This example shows the color as border, it can be applied via the CSS property "border" or "border-color".

```
.border, #border, table{ border:4px solid rgb(38, 24, 14) }
```


If only the border color should be changed use the property `border-color`.

```
.border{ border-color:rgb(38, 24, 14) }
```

If you want to add a box shadow in that color use:

Here you see how a box with a 4 pixel `rgb(38, 24, 14)` colored shadow looks like.

```
.boxshadow{ -moz-box-shadow:4px 4px 4px  
4px rgb(38, 24, 14); -webkit-box-  
shadow:4px 4px 4px 4px rgb(38, 24, 14);  
box-shadow:4px 4px 4px 4px rgb(38, 24, 14)  
}
```

Background

The CSS property to change the background color of an element to YUV 27.0460, -6.4317, 9.6067 is called "background". The background property can be set on classes, ids or directly on the HTML element.

```
.background, #background, body{  
background: rgb(38, 24, 14) }
```

If only the background color should be changed can be used:

```
.background{ background-color: rgb(38, 24,  
14) }
```

This example shows the color as background, it is applied via the CSS property "background".

To optimize and compress your CSS code, you can use our [online CSS compressor and optimizer](#) based on csstidy. If you want to create a linear or radial gradient as background or border, check our [CSS Gradient Generator](#).

Hey! You found this booklet interesting? Support Converting Colors with the new Membership Option!

The pro membership hides all ads, plus gives you double the colors in the color bucket, and more awesome pro features!

[Learn more, Memberships starting at \\$2.50/m!](#)

**Follow me
on Twitter!**

@ConvertingColor