

# Converting Colors

YUV(27.6710, -4.2748, 17.8285)

Have a look what the booklet for  
YUV(27.6710, -4.2748, 17.8285)  
contains.

<b>YUV(27.6710, -4.2748, 17.8285)</b> .....	3
<b><i>Conversions</i></b> .....	4
<b><i>Details</i></b> .....	6
<b><i>Harmonies</i></b> .....	11
<b><i>Previews</i></b> .....	18
<b><i>Color Blindness Simulation</i></b> .....	22
<b><i>CSS Examples</i></b> .....	25

# Color

**YUV(27.6710, -4.2748,  
17.8285)**

# Conversions

## Conversions Part 1

<b>Format</b>	<b>Color</b>
Hex	301313
RGB	48, 19, 19
RGB Percent	19%, 7%, 7%
CMY	0.8118, 0.9255, 0.9255
CMYK	0.00, 0.60, 0.60, 0.81
HSL	0°, 43%, 13%
HSV	0°, 60%, 19%
XYZ	1.5693, 1.1411, 0.7536

# Conversions

## Conversions Part 2

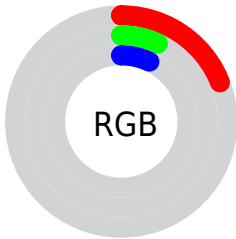
<b>Format</b>	<b>Color</b>
<b>R<sub>YB</sub></b>	48, 19, 19
Decimal	3150611
CIE <sub>Lab</sub>	10.12, 14.75, 6.66
CIE <sub>LCh</sub>	10, 16.186, 24.303
Yxy	1.1411, 0.4530, 0.3294
Android (android.graphics.Color)	4281340691 (0xFF301313)
YUV	27.6710, -4.2748, 17.8285

# Details

The YUV color **27.6710, -4.2748, 17.8285** is a dark color, and the **websafe** version is hex **330000**. A complement of this color would be **39.3290, 4.2748, -17.8285**, and the grayscale version is **28.0000, 0.0000, 0.0000**.

A 20% lighter version of the original color is **72.0520, -5.4486, 21.0024**, and **0.0000, 0.0000, 0.0000** is the 20% darker color. If you saturate the color by 10%, you get **24.1660, -5.0118, 20.9024**, and if you desaturate by 10%, it is **31.1760, -3.5378, 14.7546**.

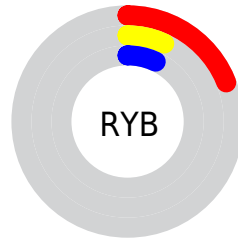
# Distribution



Red (19%)

Green (7%)

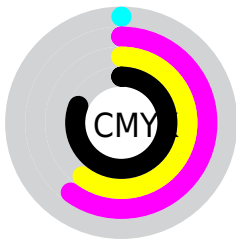
Blue (7%)



Red (19%)

Yellow (7%)

Blue (7%)

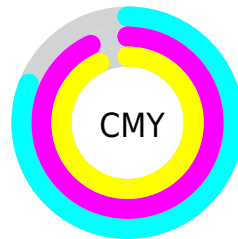


Cyan (0%)

Magenta (60%)

Yellow (60%)

Black (81%)



Cyan (81%)

Magenta (93%)

Yellow (93%)

# Brightness & Saturation Gradients

These gradients show how the YUV color 27.6710, -4.2748, 17.8285 changes by changing the brightness by 10 percent. The first figure shows a shift by +10% for each color and the second figure -10%.

Similar to the brightness gradients but the following saturation gradients show a change of the YUV color 27.6710, -4.2748, 17.8285 by changing the saturation by 10% instead.



■ 27.6710, -4.2748,  
17.8285

■ 49.4540, -5.1538,  
19.7728

■ 72.0520, -5.4486,  
21.0024

■ 96.2370, -6.0328,  
21.7172

■ 121.2480, -6.0383,  
23.4615

■ 146.8460, -6.3331,  
24.6911

■ 174.0310, -6.9173,  
25.4058

■ 201.3300, -7.0647,  
26.0206

■ 228.1340, -6.4751,  
23.5615

■ 247.7620, -2.3477,  
6.3477

■ 27.6710, -4.2748,  
17.8285

■ 8.4860, -3.6906,  
17.1138

■ 0.0000, 0.0000,  
0.0000

■ 27.6710, -4.2748,  
17.8285

■ 24.1660, -5.0118,  
20.9024

■ 20.6610, -5.7489,  
23.9763

■ 17.8570, -6.3385,  
26.4354

■ 14.3520, -7.0755,  
29.5093

■ 27.6710, -4.2748,  
17.8285

■ 31.1760, -3.5378,  
14.7546

■ 34.6810, -2.8007,  
11.6808

■ 37.4850, -2.2111,  
9.2217

■ 40.9900, -1.4741,  
6.1478

■ 44.4950, -0.7370,  
3.0739

■ 48.0000, 0.0000,  
0.0000

■ 51.5050, 0.7370,  
-3.0739

■ 54.3090, 1.3267,  
-5.5330

■ 57.8140, 2.0637,  
-8.6069

# Harmonies

## Analogous

The analogous color harmony consists of three colors that are next to each other on the color wheel.



28.6260, 0.6774, 16.1140



27.6710, -4.2748, 17.8285



26.9390, -10.8159, 15.8395

# Triad

The triadic color harmony groups three colors that are evenly spaced from another and form a triangle on the color wheel.



27.6710, -4.2748, 17.8285



23.8540, -5.3510, -10.3960



23.2070, 12.7159, -18.5985

# Complementary

The complementary color scheme is a pair of colors which are on the opposite of each other on the color wheel.



27.6710, -4.2748, 17.8285



39.3290, 4.2748, -17.8285

# Split Complementary

Split-complementary colors differ from the complementary color scheme. The scheme consists of three colors, the original color and two neighbors of the complement color.



23.9140, 10.3954, -20.9726



27.6710, -4.2748, 17.8285



22.2210, 1.3700, -19.4878

# Square

The square scheme is like the rectangle color scheme, but the four colors are evenly spaced on the color wheel.



27.6710, -4.2748, 17.8285



25.7970, -12.2249, 1.0550



23.4750, 6.1748, -20.5876



28.2090, 9.7570, -2.8143

# Rectangle

The rectangle color scheme consists of four colors that form a rectangle on the color wheel.



27.6710, -4.2748, 17.8285



26.6350, -13.1311, 11.7211



23.4750, 6.1748, -20.5876



23.1960, 12.7214, -20.3429



# Sweetspot

The sweet spot groups the original color and five complimentary colors.



27.6710, -4.2748, 17.8285



53.2890, -1.6215, 6.7625



30.9770, 8.3923, 14.9292



26.0930, -1.0318, 4.3034



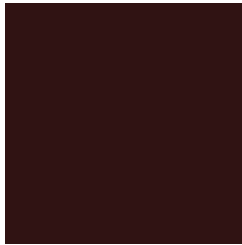
158.0000, 0.0000, 0.0000



31.0000, 0.0000, 0.0000

# Previews

## White Background



This preview shows how the YUV color 27.6710, -4.2748, 17.8285 looks on a white background.

## Color Contrast Check

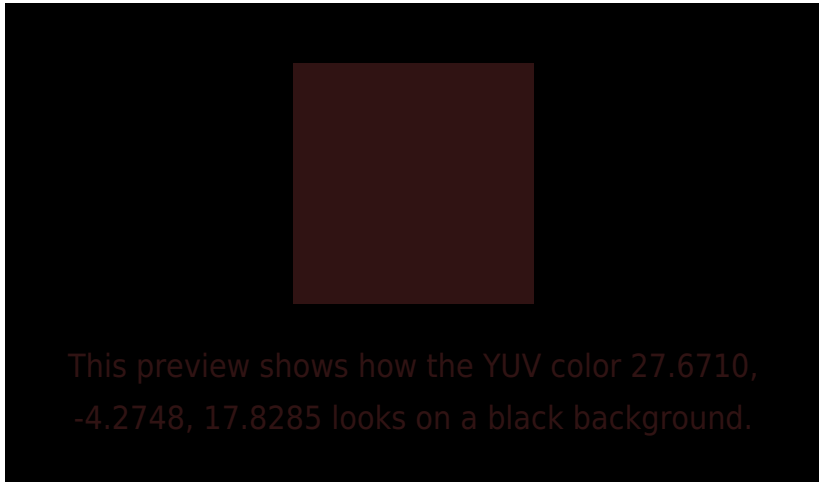
Large Text (above 18pt) WCAG AA ✓ Pass

Any Text WCAG AA ✓ Pass

Large Text (above 18pt) WCAG AAA ✓ Pass

Any Text WCAG AAA ✓ Pass

# Black Background



## Color Contrast Check

Large Text (above 18pt) WCAG AA × Fail

Any Text WCAG AA × Fail

Large Text (above 18pt) WCAG AAA × Fail

Any Text WCAG AAA × Fail

If you want to check with other color combinations, try the [Color Contrast Checker](#).

**YUV 27.6710, -4.2748, 17.8285**

## **Background**



This preview shows how black text looks on a background with the YUV color 27.6710, -4.2748, 17.8285.



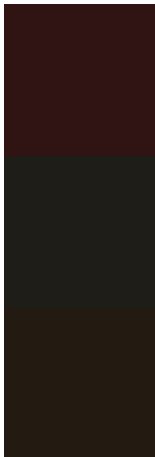
This preview shows how white text looks on a background with the YUV color 27.6710, -4.2748,



# Color Blindness Simulation

Color vision deficiency is a very complex topic, and I could not describe the different causes any better than Wikipedia does, so if you want to learn more, you should check out their [article about color blindness](#).

## Dichromacy



### Original Color

27.6710, -4.2748, 17.8285

### Protanopia

28.6150, -2.7682, 1.2146

### Deuteranopia

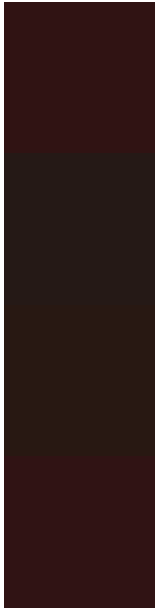
28.3660, -5.1104, 5.8180



## Tritanopia

27.7850, -3.8380, 17.7286

# Trichromacy



## Original Color

27.6710, -4.2748, 17.8285

## Protanomaly

28.2460, -3.0793, 7.6773

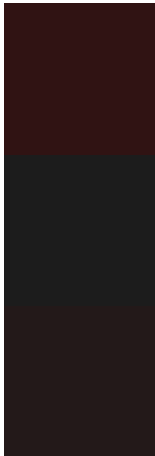
## Deuteranomaly

28.1000, -4.9793, 10.4363

## Tritanomaly

27.7850, -3.8380, 17.7286

# Monochromacy



## Original Color

27.6710, -4.2748, 17.8285

## Achromatopsia

28.0000, 0.0000, 0.0000

## Achromatomaly

27.9900, -1.4741, 6.1478



# CSS Examples

## Text

The CSS property to change the color of the text to YUV 27.6710, -4.2748, 17.8285 is called "color". The color property can be set on classes, ids or directly on the HTML element.

This example shows how text in the color `rgb(48, 19, 19)` looks like.

```
.text, #text, p{  
    color:rgb(48, 19, 19)  
}
```

If you want to add a text shadow in that color use the text-shadow property, you can generate a text shadow directly with our [CSS Text Shadow Generator](#).

Here you see how black text with a 4 pixel rgb(48, 19, 19) colored shadow looks like.

```
.shadow{ text-shadow: 4px 4px 2px rgb(48, 19, 19) }
```

## Border

The CSS property to change the border of an element to YUV 27.6710, -4.2748, 17.8285 is called "border". The border property can be set on classes, ids or directly on the HTML element.

This example shows the color as border, it can be applied via the CSS property "border" or "border-color".

```
.border, #border, table{ border:4px solid rgb(48, 19, 19) }
```

If only the border color should be changed use the property border-color.

```
.border{ border-color:rgb(48, 19, 19) }
```

If you want to add a box shadow in that color use:

Here you see how a box with a 4 pixel rgb(48, 19, 19) colored shadow looks like.

```
.boxshadow{ -moz-box-shadow:4px 4px 4px  
4px rgb(48, 19, 19); -webkit-box-  
shadow:4px 4px 4px 4px rgb(48, 19, 19);  
box-shadow:4px 4px 4px 4px rgb(48, 19, 19)  
}
```

# Background

The CSS property to change the background color of an element to YUV 27.6710, -4.2748, 17.8285 is called "background". The background property can be set on classes, ids or directly on the HTML element.

```
.background, #background, body{  
background: rgb(48, 19, 19) }
```

If only the background color should be changed can be used:

```
.background{ background-color: rgb(48, 19,  
19) }
```

This example shows the color as background, it is applied via the CSS property "background".

To optimize and compress your CSS code, you can use our [online CSS compressor and optimizer](#) based on csstidy. If you want to create a linear or radial gradient as background or border, check our [CSS Gradient Generator](#).

Hey! You found this booklet interesting? Have a look at my other booklet **HOWCOLORS.WORK – A CSS color notation guide.**



## **HOWCOLORS.WORK**

**A CSS color notation guide.**

Are you new to web development and want to know the different ways to express colors in CSS? Then this booklet is for you!

**HOWCOLORS.WORK will help you understand the syntax of the color notations in CSS.**

You will learn all the current and new ways to express colors to prepare yourself for the future!

**[Buy now, starting at \\$4.99!](#)**

**Follow me  
on Twitter!**

@ConvertingColor