

Converting Colors

YUV(28.2580, -4.5642, 17.3137)

Have a look what the booklet for
YUV(28.2580, -4.5642, 17.3137)
contains.

YUV(28.2580, -4.5642, 17.3137)	3
<i>Conversions</i>	4
<i>Details</i>	6
<i>Harmonies</i>	12
<i>Previews</i>	24
<i>Color Blindness Simulation</i>	28
<i>CSS Examples</i>	31

Color

**YUV(28.2580, -4.5642,
17.3137)**

Conversions

Conversions Part 1

Format	Color
Hex	301413
RGB	48, 20, 19
RGB Percent	19%, 8%, 7%
CMY	0.8118, 0.9216, 0.9255
CMYK	0.00, 0.58, 0.60, 0.81
HSL	2°, 43%, 13%
HSV	2°, 60%, 19%
XYZ	1.5866, 1.1757, 0.7594
YIQ	28.2580, 17.0090, 5.6250

Conversions

Conversions Part 2

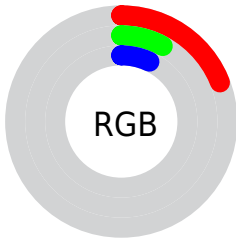
Format	Color
RYB	48, 20, 19
Decimal	3150867
CIELab	10.38, 14.09, 7.03
CIELCh	10, 15.748, 26.511
Yxy	1.1757, 0.4505, 0.3338
Android (android.graphics.Color)	4281340947 (0xFF301413)
YUV	28.2580, -4.5642, 17.3137
Hunter-Lab	10.8430, 7.1441, 3.4376

Details

The YUV color **28.2580, -4.5642, 17.3137** is a dark color, and the websafe version is hex **330000**. A complement of this color would be **38.7420, 4.5642, -17.3137**, and the grayscale version is **28.0000, 0.0000, 0.0000**.

A 20% lighter version of the original color is **72.6390, -5.7380, 20.4876**, and **0.0000, 0.0000, 0.0000** is the 20% darker color. If you saturate the color by 10%, you get **24.7530, -5.3012, 20.3876**, and if you desaturate by 10%, it is **31.7630, -3.8272, 14.2398**.

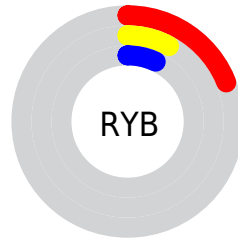
Distribution



Red (19%)

Green (8%)

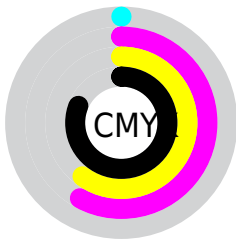
Blue (7%)



Red (19%)

Yellow (8%)

Blue (7%)

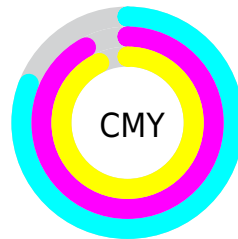


Cyan (0%)

Magenta (58%)

Yellow (60%)

Black (81%)



Cyan (81%)

Magenta (92%)

Yellow (93%)

Brightness & Saturation Gradients

These gradients show how the YUV color 28.2580, -4.5642, 17.3137 changes by changing the brightness by 10 percent. The first figure shows a shift by +10% for each color and the second figure -10%.

Similar to the brightness gradients but the following saturation gradients show a change of the YUV color 28.2580, -4.5642, 17.3137 by changing the saturation by 10% instead.

■ 28.2580, -4.5642,
17.3137

■ 28.2580, -4.5642,
17.3137

■ 248.3490, -2.6371,
5.8329

■ 8.3720, -4.1274,
17.2138

■ 72.6390, -5.7380,
20.4876

■ 0.0000, 0.0000,
0.0000

■ 96.8240, -6.3222,
21.2024

■ 121.8350, -6.3277,
22.9467

■ 148.0200, -6.9119,
23.6615

■ 174.3190, -7.0593,
24.2762

■ 201.9170, -7.3541,

25.5058

■ 228.7210, -6.7645,
23.0467

■ 28.2580, -4.5642,
17.3137

■ 28.2580, -4.5642,
17.3137

■ 24.7530, -5.3012,
20.3876

■ 31.7630, -3.8272,
14.2398

■ 21.8350, -6.3277,
22.9467

■ 34.6810, -2.8007,
11.6808

■ 18.4440, -6.6279,
25.9206

■ 38.0720, -2.5005,
8.7069

■ 15.5260, -7.6543,
28.4797

■ 41.5770, -1.7635,
5.6330

■ 44.4950, -0.7370,
3.0739

■ 48.0000, 0.0000,
0.0000

■ 50.9180, 1.0264,
-2.5591

■ 54.3090, 1.3267,
-5.5330

■ 57.8140, 2.0637,
-8.6069

Harmonies

Analogous

The Analogous color harmony consists of three colors that are next to each other on the color wheel.



28.6260, 0.6774, 16.1140



28.2580, -4.5642, 17.3137



27.3410, -10.5211, 14.6099

Triad

The Triadic color harmony groups three colors that are evenly spaced from another and form a triangle on the color wheel.



28.2580, -4.5642, 17.3137



24.6690, -4.7668, -11.1107



24.9900, 11.8369, -16.6542

Complementary

The Complementary color scheme is a pair of colors which are on the opposite of each other on the color wheel.



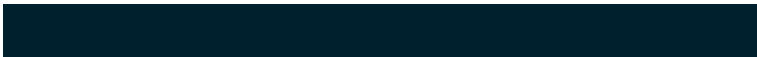
28.2580, -4.5642, 17.3137



38.7420, 4.5642, -17.3137

Split Complementary

Split-complementary colors differ from the complementary color scheme. The scheme consists of three colors, the original color and two neighbors of the complement color.



24.0280, 10.8322, -21.0726



28.2580, -4.5642, 17.3137



23.0360, 1.9543, -20.2026

Square

The Square scheme is like the rectangle color scheme, but the four colors are evenly spaced on the color wheel.



28.2580, -4.5642, 17.3137



25.7260, -11.2039, 0.2403



24.1760, 6.3222, -21.2024



28.6930, 9.0254, -1.4848

Rectangle

The Rectangle color scheme consists of four colors that form a rectangle on the color wheel.



28.2580, -4.5642, 17.3137



27.3360, -12.9836, 11.1063



24.1760, 6.3222, -21.2024



23.7830, 12.4320, -20.8577

Sweetspot

The Sweet Spot groups the original color and five complimentary colors.



28.2580, -4.5642, 17.3137



53.8760, -1.9109, 6.2477



30.8630, 7.9555, 15.0291



26.0930, -1.0318, 4.3034



158.0000, 0.0000, 0.0000



31.0000, 0.0000, 0.0000

Same Dimension

The Same Dimension uses a secret algorithm to generate beautiful new colors.



28.2580, -4.5642, 17.3137



30.7430, -6.7753, 26.5354



36.4760, -8.6157, 10.1065



21.5980, -0.2948, 1.2296



27.7740, -13.6926, 51.9412



68.0950, -33.5708, 127.9587

Inverse Universe

The Inverse Universe completely reimagines the original color for something new.



38.7420, 4.5642, -17.3137



47.2570, 6.7753, -26.5354



30.5240, 8.6157, -10.1065



22.4020, 0.2948, -1.2296



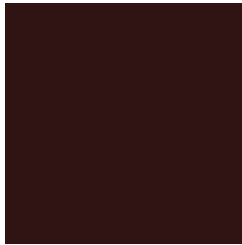
59.2260, 13.6926, -51.9412



145.9050, 33.5708, -127.9587

Previews

White Background



This preview shows how the YUV color 28.2580, -4.5642, 17.3137 looks on a white background.

Color Contrast Check

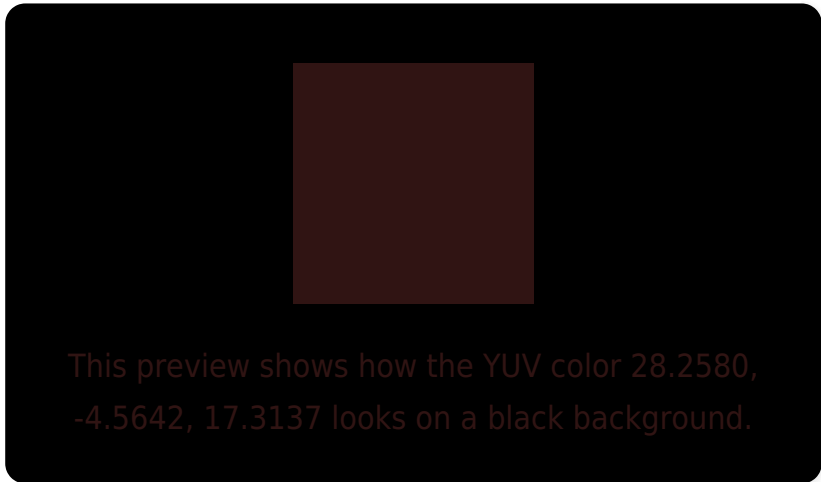
Large Text (above 18pt) WCAG AA ✓ Pass

Any Text WCAG AA ✓ Pass

Large Text (above 18pt) WCAG AAA ✓ Pass

Any Text WCAG AAA ✓ Pass

Black Background



Color Contrast Check

Large Text (above 18pt) WCAG AA × Fail

Any Text WCAG AA × Fail

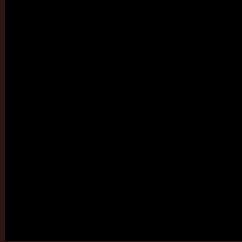
Large Text (above 18pt) WCAG AAA × Fail

Any Text WCAG AAA × Fail

If you want to check with other color combinations, try the [Color Contrast Checker](#).

YUV 28.2580, -4.5642, 17.3137

Background



This preview shows how black text looks on a background with the YUV color 28.2580, -4.5642, 17.3137.



This preview shows how white text looks on a background with the YUV color 28.2580, -4.5642,

Color Blindness Simulation

Color vision deficiency is a very complex topic, and I could not describe the different causes any better than Wikipedia does, so if you want to learn more, you should check out their [article about color blindness](#).

Dichromacy



Original Color

28.2580, -4.5642, 17.3137

Protanopia

28.9140, -2.9156, 1.8294

Deuteranopia

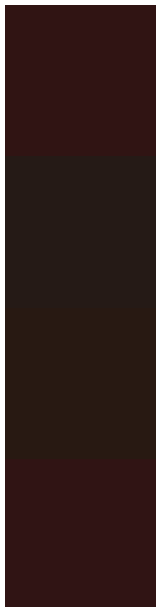
28.9530, -5.3998, 5.3032



Tritanopia

28.4860, -3.6906, 17.1138

Trichromacy



Original Color

28.2580, -4.5642, 17.3137

Protanomaly

28.8330, -3.3687, 7.1625

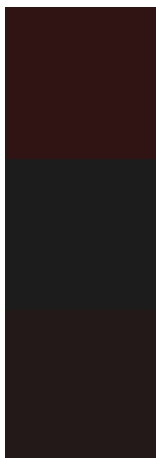
Deuteranomaly

28.6870, -5.2687, 9.9215

Tritanomaly

28.3720, -4.1274, 17.2138

Monochromacy



Original Color

28.2580, -4.5642, 17.3137

Achromatopsia

28.0000, 0.0000, 0.0000

Achromatomaly

27.9900, -1.4741, 6.1478

CSS Examples

Text

The CSS property to change the color of the text to YUV 28.2580, -4.5642, 17.3137 is called "color". The color property can be set on classes, ids or directly on the HTML element.

This example shows how text in the color `rgb(48, 20, 19)` looks like.

```
.text, #text, p{  
    color:rgb(48, 20, 19)  
}
```

If you want to add a text shadow in that color use the text-shadow property, you can generate a text shadow directly with our [CSS Text Shadow Generator](#).

Here you see how black text with a 4 pixel rgb(48, 20, 19) colored shadow looks like.

```
.shadow{ text-shadow: 4px 4px 2px rgb(48, 20, 19) }
```

Border

The CSS property to change the border of an element to YUV 28.2580, -4.5642, 17.3137 is called "border". The border property can be set on classes, ids or directly on the HTML element.

This example shows the color as border, it can be applied via the CSS property "border" or "border-color".

```
.border, #border, table{ border:4px solid rgb(48, 20, 19) }
```


If only the border color should be changed use the property border-color.

```
.border{ border-color:rgb(48, 20, 19) }
```

If you want to add a box shadow in that color use:

Here you see how a box with a 4 pixel rgb(48, 20, 19) colored shadow looks like.

```
.boxshadow{ -moz-box-shadow:4px 4px 4px  
4px rgb(48, 20, 19); -webkit-box-  
shadow:4px 4px 4px 4px rgb(48, 20, 19);  
box-shadow:4px 4px 4px 4px rgb(48, 20, 19)  
}
```

Background

The CSS property to change the background color of an element to YUV 28.2580, -4.5642, 17.3137 is called "background". The background property can be set on classes, ids or directly on the HTML element.

```
.background, #background, body{  
background: rgb(48, 20, 19) }
```

If only the background color should be changed can be used:

```
.background{ background-color: rgb(48, 20,  
19) }
```

This example shows the color as background, it is applied via the CSS property "background".

To optimize and compress your CSS code, you can use our [online CSS compressor and optimizer](#) based on csstidy. If you want to create a linear or radial gradient as background or border, check our [CSS Gradient Generator](#).

Hey! You found this booklet interesting? Support Converting Colors with the new Membership Option!

The pro membership hides all ads, plus gives you double the colors in the color bucket, and more awesome pro features!

[Learn more, Memberships starting at \\$2.50/m!](#)

**Follow me
on Twitter!**

@ConvertingColor