

Converting Colors

YUV(28.8610, -5.8475, 8.8919)

Have a look what the booklet for
YUV(28.8610, -5.8475, 8.8919)
contains.

YUV(28.8610, -5.8475, 8.8919)	3
<i>Conversions</i>	4
<i>Details</i>	6
<i>Harmonies</i>	12
<i>Previews</i>	24
<i>Color Blindness Simulation</i>	28
<i>CSS Examples</i>	31

Color

**YUV(28.8610, -5.8475,
8.8919)**

Conversions

Conversions Part 1

Format	Color
Hex	271A11
RGB	39, 26, 17
RGB Percent	15%, 10%, 7%
CMY	0.8471, 0.8980, 0.9333
CMYK	0.00, 0.33, 0.56, 0.85
HSL	25°, 39%, 11%
HSV	25°, 56%, 15%
XYZ	1.3073, 1.2106, 0.6951
YIQ	28.8610, 10.6370, -0.0430

Conversions

Conversions Part 2

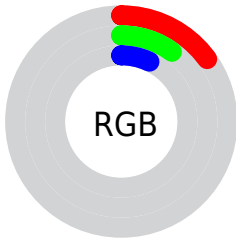
Format	Color
RYB	39, 32, 17
Decimal	2562577
CIELab	10.64, 4.99, 8.39
CIElCh	11, 9.766, 59.273
Yxy	1.2106, 0.4069, 0.3768
Android (android.graphics.Color)	4280752657 (0xFF271A11)
YUV	28.8610, -5.8475, 8.8919
Hunter-Lab	11.0027, 1.9535, 3.9563

Details

The YUV color **28.8610, -5.8475, 8.8919** is a dark color, and the websafe version is hex **333333**. A complement of this color would be **27.1390, 5.8475, -8.8919**, and the grayscale version is **29.0000, 0.0000, 0.0000**.

A 20% lighter version of the original color is **72.6440, -6.7265, 10.8362**, and **0.0000, 0.0000, 0.0000** is the 20% darker color. If you saturate the color by 10%, you get **27.2310, -7.0159, 10.3214**, and if you desaturate by 10%, it is **30.4910, -4.6791, 7.4624**.

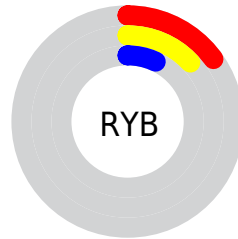
Distribution



Red (15%)

Green (10%)

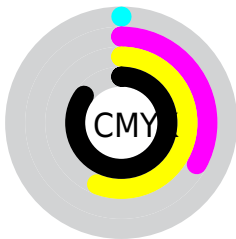
Blue (7%)



Red (15%)

Yellow (13%)

Blue (7%)

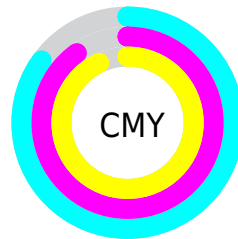


Cyan (0%)

Magenta (33%)

Yellow (56%)

Black (85%)



Cyan (85%)

Magenta (90%)

Yellow (93%)

Brightness & Saturation Gradients

These gradients show how the YUV color 28.8610, -5.8475, 8.8919 changes by changing the brightness by 10 percent. The first figure shows a shift by +10% for each color and the second figure -10%.

Similar to the brightness gradients but the following saturation gradients show a change of the YUV color 28.8610, -5.8475, 8.8919 by changing the saturation by 10% instead.

■ 28.8610, -5.8475,
8.8919

■ 28.8610, -5.8475,
8.8919

■ 252.2300, -5.5364,
2.4293

■ 4.7840, -2.3585,
9.8364

■ 72.6440, -6.7265,
10.8362

■ 0.0000, 0.0000,
0.0000

■ 96.5300, -7.1633,
10.9362

■ 121.2420, -7.0213,
12.0658

■ 147.1280, -7.4581,
12.1657

■ 173.4270, -7.6055,
12.7805

■ 200.7260, -7.7529,

13.3953

■ 228.9110, -8.3371,
14.1101

■ 28.8610, -5.8475,
8.8919

■ 28.8610, -5.8475,
8.8919

■ 27.2310, -7.0159,
10.3214

■ 30.4910, -4.6791,
7.4624

■ 25.0140, -7.8949,
12.2657

■ 32.7080, -3.8000,
5.5181

■ 23.3840, -9.0633,
13.6952

■ 34.3380, -2.6316,
4.0886

■ 21.7540, -10.2317,
15.1247

■ 35.9680, -1.4632,
2.6591

■ 21.0530, -10.3791,
15.7395

■ 38.1850, -0.5842,
0.7148

■ 39.7010, 0.1474,
-0.6148

■ 41.3310, 1.3158,
-2.0443

■ 42.9610, 2.4842,
-3.4738

■ 45.1780, 3.3632,
-5.4181

Harmonies

Analogous

The Analogous color harmony consists of three colors that are next to each other on the color wheel.



29.2680, -3.0901, 11.1660



28.8610, -5.8475, 8.8919



28.1980, -6.9996, 5.0884

Triad

The Triadic color harmony groups three colors that are evenly spaced from another and form a triangle on the color wheel.



28.8610, -5.8475, 8.8919



25.2650, 1.3484, -12.5104



29.0800, 5.3836, -0.0702

Complementary

The Complementary color scheme is a pair of colors which are on the opposite of each other on the color wheel.



28.8610, -5.8475, 8.8919



27.1390, 5.8475, -8.8919

Split Complementary

Split-complementary colors differ from the complementary color scheme. The scheme consists of three colors, the original color and two neighbors of the complement color.



27.7910, 7.0050, -6.8327



28.8610, -5.8475, 8.8919



24.8670, 4.9956, -15.6694

Square

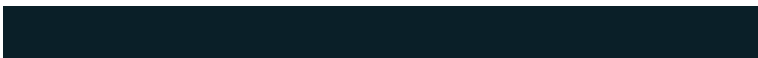
The Square scheme is like the rectangle color scheme, but the four colors are evenly spaced on the color wheel.



28.8610, -5.8475, 8.8919



26.9730, -2.4517, -6.9923



25.7470, 7.0267, -13.8101



29.8420, 3.0359, 6.2776

Rectangle

The Rectangle color scheme consists of four colors that form a rectangle on the color wheel.



28.8610, -5.8475, 8.8919



27.9910, -6.4046, 0.8849



25.7470, 7.0267, -13.8101



28.8840, 5.9732, -2.5293

Sweetspot

The Sweet Spot groups the original color and five complimentary colors.



28.8610, -5.8475, 8.8919



47.0390, -2.4842, 3.4738



25.0600, 2.4354, 12.2254



22.9680, -1.4632, 2.6591



153.0000, 0.0000, 0.0000



26.0000, 0.0000, 0.0000

Same Dimension

The Same Dimension uses a secret algorithm to generate beautiful new colors.



28.8610, -5.8475, 8.8919



35.2700, -9.5001, 13.7952



35.3180, -9.0308, 3.2291



19.1850, -0.5842, 0.7148



45.0740, -22.2215, 34.1381



114.4570, -56.4273, 85.5452

Inverse Universe

The Inverse Universe completely reimagines the original color for something new.



27.1390, 5.8475, -8.8919



32.3170, 9.2107, -14.3100



20.6820, 9.0308, -3.2291



19.4020, 0.2948, -1.2296



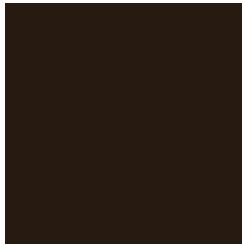
38.9260, 22.2215, -34.1381



97.5430, 56.4273, -85.5452

Previews

White Background



This preview shows how the YUV color 28.8610, -5.8475, 8.8919 looks on a white background.

Color Contrast Check

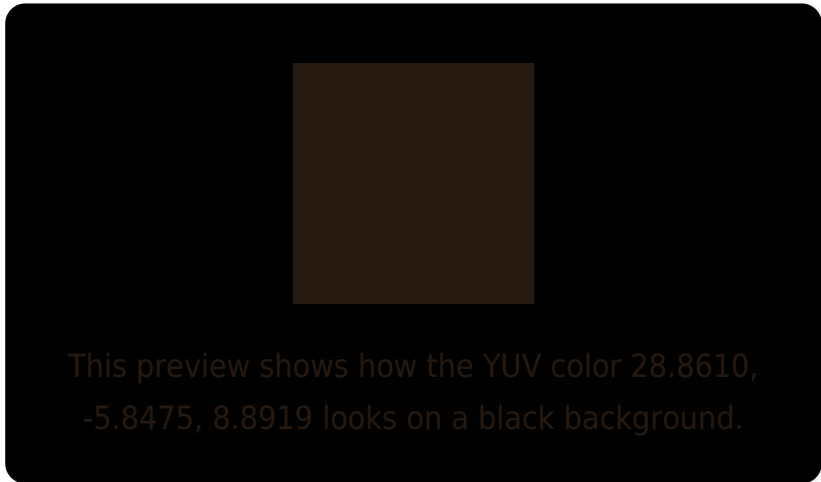
Large Text (above 18pt) WCAG AA ✓ Pass

Any Text WCAG AA ✓ Pass

Large Text (above 18pt) WCAG AAA ✓ Pass

Any Text WCAG AAA ✓ Pass

Black Background



Color Contrast Check

Large Text (above 18pt) WCAG AA × Fail

Any Text WCAG AA × Fail

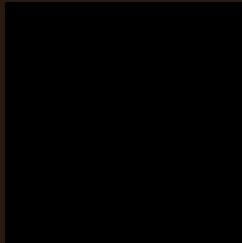
Large Text (above 18pt) WCAG AAA × Fail

Any Text WCAG AAA × Fail

If you want to check with other color combinations, try the [Color Contrast Checker](#).

YUV 28.8610, -5.8475, 8.8919

Background



This preview shows how black text looks on a background with the YUV color 28.8610, -5.8475, 8.8919.



This preview shows how white text looks on a background with the YUV color 28.8610, -5.8475,

Color Blindness Simulation

Color vision deficiency is a very complex topic, and I could not describe the different causes any better than Wikipedia does, so if you want to learn more, you should check out their [article about color blindness](#).

Dichromacy



Original Color

28.8610, -5.8475, 8.8919

Protanopia

28.6430, -5.2470, 2.9441

Deuteranopia

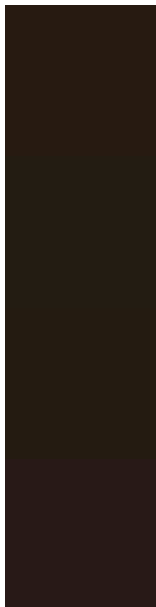
28.8390, -5.8366, 5.4032



Tritanopia

29.7130, -1.3375, 9.0217

Trichromacy



Original Color

28.8610, -5.8475, 8.8919

Protanomaly

28.9530, -5.3998, 5.3032

Deuteranomaly

28.5510, -5.6946, 6.5328

Tritanomaly

29.2570, -3.0847, 9.4216

Monochromacy



Original Color

28.8610, -5.8475, 8.8919

Achromatopsia

29.0000, 0.0000, 0.0000

Achromatomaly

29.1530, -2.0474, 3.3738

CSS Examples

Text

The CSS property to change the color of the text to YUV 28.8610, -5.8475, 8.8919 is called "color". The color property can be set on classes, ids or directly on the HTML element.

This example shows how text in the color `rgb(39, 26, 17)` looks like.

```
.text, #text, p{  
    color:rgb(39, 26, 17)  
}
```

If you want to add a text shadow in that color use the text-shadow property, you can generate a text shadow directly with our [CSS Text Shadow Generator](#).

Here you see how black text with a 4 pixel rgb(39, 26, 17) colored shadow looks like.

```
.shadow{ text-shadow: 4px 4px 2px rgb(39, 26, 17) }
```

Border

The CSS property to change the border of an element to YUV 28.8610, -5.8475, 8.8919 is called "border". The border property can be set on classes, ids or directly on the HTML element.

This example shows the color as border, it can be applied via the CSS property "border" or "border-color".

```
.border, #border, table{ border:4px solid rgb(39, 26, 17) }
```


If only the border color should be changed use the property `border-color`.

```
.border{ border-color:rgb(39, 26, 17) }
```

If you want to add a box shadow in that color use:

Here you see how a box with a 4 pixel `rgb(39, 26, 17)` colored shadow looks like.

```
.boxshadow{ -moz-box-shadow:4px 4px 4px  
4px rgb(39, 26, 17); -webkit-box-  
shadow:4px 4px 4px 4px rgb(39, 26, 17);  
box-shadow:4px 4px 4px 4px rgb(39, 26, 17)  
}
```

Background

The CSS property to change the background color of an element to YUV 28.8610, -5.8475, 8.8919 is called "background". The background property can be set on classes, ids or directly on the HTML element.

```
.background, #background, body{  
background: rgb(39, 26, 17) }
```

If only the background color should be changed can be used:

```
.background{ background-color: rgb(39, 26,  
17) }
```

This example shows the color as background, it is applied via the CSS property "background".

To optimize and compress your CSS code, you can use our [online CSS compressor and optimizer](#) based on csstidy. If you want to create a linear or radial gradient as background or border, check our [CSS Gradient Generator](#).

Hey! You found this booklet interesting? Support Converting Colors with the new Membership Option!

The pro membership hides all ads, plus gives you double the colors in the color bucket, and more awesome pro features!

[Learn more, Memberships starting at \\$2.50/m!](#)

**Follow me
on Twitter!**

@ConvertingColor