

Converting Colors

YUV(28.9090, -1.9271, 11.4808)

Have a look what the booklet for
YUV(28.9090, -1.9271, 11.4808)
contains.

YUV(28.9090, -1.9271, 11.4808)	3
<i>Conversions</i>	4
<i>Details</i>	6
<i>Harmonies</i>	12
<i>Previews</i>	24
<i>Color Blindness Simulation</i>	28
<i>CSS Examples</i>	31

Color

**YUV(28.9090, -1.9271,
11.4808)**

Conversions

Conversions Part 1

Format	Color
Hex	2A1719
RGB	42, 23, 25
RGB Percent	16%, 9%, 10%
CMY	0.8353, 0.9098, 0.9020
CMYK	0.00, 0.45, 0.40, 0.84
HSL	354°, 29%, 13%
HSV	354°, 45%, 16%
XYZ	1.4367, 1.1752, 1.0708
YIQ	28.9090, 10.6820, 4.6500

Conversions

Conversions Part 2

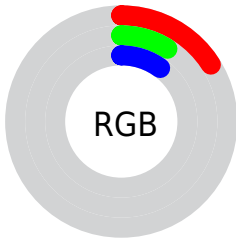
Format	Color
R_{YB}	42, 23, 25
Decimal	2758425
CIE Lab	10.37, 9.95, 2.62
CIE LCh	10, 10.289, 14.761
Yxy	1.1752, 0.3901, 0.3191
Android (android.graphics.Color)	4280948505 (0xFF2A1719)
YUV	28.9090, -1.9271, 11.4808
Hunter-Lab	10.8408, 4.6850, 1.7320

Details

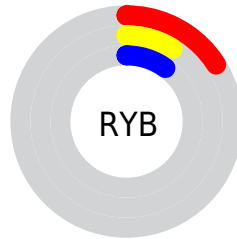
The YUV color **28.9090, -1.9271, 11.4808** is a dark color, and the websafe version is hex **000000**. A complement of this color would be **36.0910, 1.9271, -11.4808**, and the grayscale version is **29.0000, 0.0000, 0.0000**.

A 20% lighter version of the original color is **72.8060, -2.3694, 13.3251**, and **0.0000, 0.0000, 0.0000** is the 20% darker color. If you saturate the color by 10%, you get **26.1050, -2.5168, 13.9399**, and if you desaturate by 10%, it is **31.7130, -1.3375, 9.0217**.

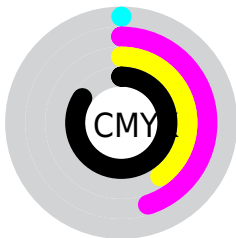
Distribution



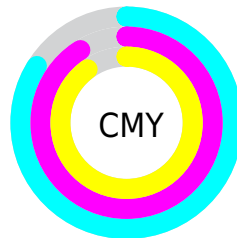
- Red (16%)
- Green (9%)
- Blue (10%)



- Red (16%)
- Yellow (9%)
- Blue (10%)



- Cyan (0%)
- Magenta (45%)
- Yellow (40%)
- Black (84%)



- Cyan (84%)
- Magenta (91%)
- Yellow (90%)

Brightness & Saturation Gradients

These gradients show how the YUV color 28.9090, -1.9271, 11.4808 changes by changing the brightness by 10 percent. The first figure shows a shift by +10% for each color and the second figure -10%.

Similar to the brightness gradients but the following saturation gradients show a change of the YUV color 28.9090, -1.9271, 11.4808 by changing the saturation by 10% instead.

■ 28.9090, -1.9271,
11.4808

■ 28.9090, -1.9271,
11.4808

■ 251.0220, -0.0108,
3.4887

■ 6.8770, -3.3904,
14.1399

■ 72.8060, -2.3694,
13.3251

■ 0.0000, 0.0000,
0.0000

■ 96.4040, -2.6642,
14.5547

■ 121.7030, -2.8116,
15.1695

■ 147.0020, -2.9590,
15.7842

■ 174.0020, -2.9590,
15.7842

■ 201.3010, -3.1064,

16.3990

■ 229.6000, -3.2538,
17.0138

■ 28.9090, -1.9271,
11.4808

■ 28.9090, -1.9271,
11.4808

■ 26.1050, -2.5168,
13.9399

■ 31.7130, -1.3375,
9.0217

■ 23.3010, -3.1064,
16.3990

■ 34.5170, -0.7479,
6.5626

■ 20.0240, -2.9698,
19.2730

■ 37.7940, -0.8844,
3.6887

■ 17.2200, -3.5595,
21.7321

■ 40.5980, -0.2948,
1.2296

■ 14.4160, -4.1491,
24.1912

■ 43.4020, 0.2948,
-1.2296

■ 13.0140, -4.4439,
25.4207

■ 46.2060, 0.8844,
-3.6887

■ 48.8960, 1.0373,
-6.0478

■ 52.2870, 1.3375,
-9.0217

■ 55.0910, 1.9271,
-11.4808

Harmonies

Analogous

The Analogous color harmony consists of three colors that are next to each other on the color wheel.



29.1090, 1.4253, 9.5514



28.9090, -1.9271, 11.4808



28.3990, -5.1267, 11.0511

Triad

The Triadic color harmony groups three colors that are evenly spaced from another and form a triangle on the color wheel.



28.9090, -1.9271, 11.4808



26.8270, -4.3517, -4.2333



26.1710, 7.3107, -11.5510

Complementary

The Complementary color scheme is a pair of colors which are on the opposite of each other on the color wheel.



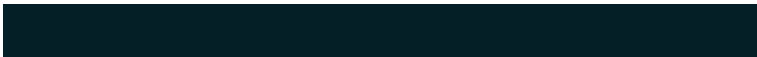
28.9090, -1.9271, 11.4808



36.0910, 1.9271, -11.4808

Split Complementary

Split-complementary colors differ from the complementary color scheme. The scheme consists of three colors, the original color and two neighbors of the complement color.



24.0240, 6.8902, -16.6840



28.9090, -1.9271, 11.4808



25.4070, -0.6937, -10.8809

Square

The Square scheme is like the rectangle color scheme, but the four colors are evenly spaced on the color wheel.



28.9090, -1.9271, 11.4808



27.4750, -7.1362, 2.2144



24.2260, 3.8326, -15.9842



28.4000, 6.7048, -3.8588

Rectangle

The Rectangle color scheme consists of four colors that form a rectangle on the color wheel.



28.9090, -1.9271, 11.4808



28.3340, -6.5737, 8.4771



24.2260, 3.8326, -15.9842



25.8610, 7.4635, -13.9101

Sweetspot

The Sweet Spot groups the original color and five complimentary colors.



28.9090, -1.9271, 11.4808



48.5060, -0.7425, 4.8182



30.2490, 5.7932, 8.5516



24.6090, -0.3002, 2.9739



156.0000, 0.0000, 0.0000



28.0000, 0.0000, 0.0000

Same Dimension

The Same Dimension uses a secret algorithm to generate beautiful new colors.



28.9090, -1.9271, 11.4808



34.0130, -2.9644, 17.5286



32.7900, -4.8265, 8.0772



18.7120, 0.1420, 1.1296



26.1420, -8.4510, 50.7415



65.8960, -21.6407, 128.1332

Inverse Universe

The Inverse Universe completely reimagines the original color for something new.



28.9090, -1.9271, 11.4808



34.0130, -2.9644, 17.5286



32.2100, 4.8265, -8.0772



18.7120, 0.1420, 1.1296



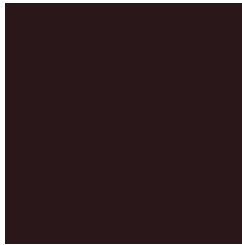
26.1420, -8.4510, 50.7415



65.8960, -21.6407, 128.1332

Previews

White Background



This preview shows how the YUV color 28.9090, -1.9271, 11.4808 looks on a white background.

Color Contrast Check

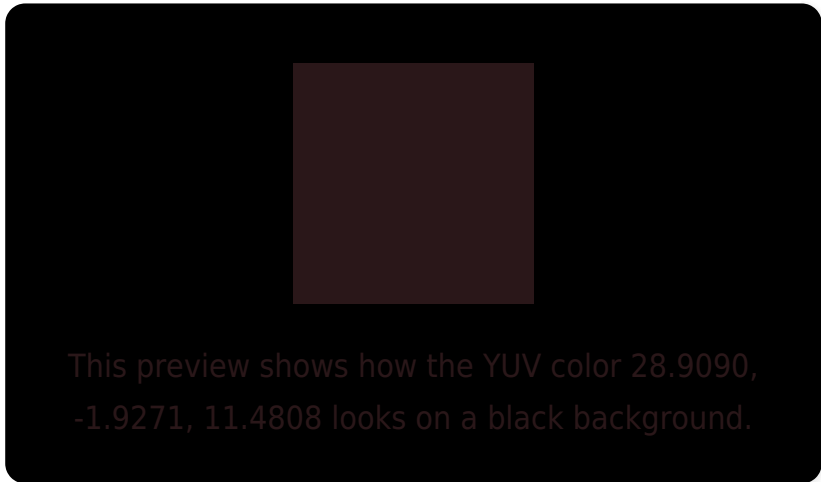
Large Text (above 18pt) WCAG AA ✓ Pass

Any Text WCAG AA ✓ Pass

Large Text (above 18pt) WCAG AAA ✓ Pass

Any Text WCAG AAA ✓ Pass

Black Background



Color Contrast Check

Large Text (above 18pt) WCAG AA × Fail

Any Text WCAG AA × Fail

Large Text (above 18pt) WCAG AAA × Fail

Any Text WCAG AAA × Fail

If you want to check with other color combinations, try the [Color Contrast Checker](#).

YUV 28.9090, -1.9271, 11.4808

Background



This preview shows how black text looks on a background with the YUV color 28.9090, -1.9271, 11.4808.

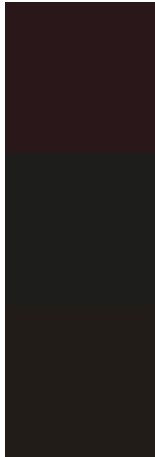


This preview shows how white text looks on a background with the YUV color 28.9090, -1.9271,

Color Blindness Simulation

Color vision deficiency is a very complex topic, and I could not describe the different causes any better than Wikipedia does, so if you want to learn more, you should check out their [article about color blindness](#).

Dichromacy



Original Color

28.9090, -1.9271, 11.4808

Protanopia

28.8860, -0.4368, 0.1000

Deuteranopia

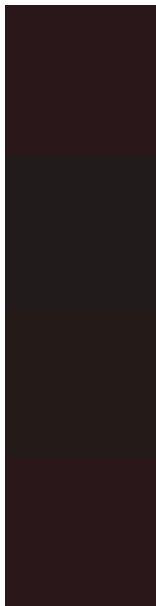
29.0390, -2.4842, 3.4738



Tritanopia

28.9090, -1.9271, 11.4808

Trichromacy



Original Color

28.9090, -1.9271, 11.4808

Protanomaly

29.0930, -1.0318, 4.3034

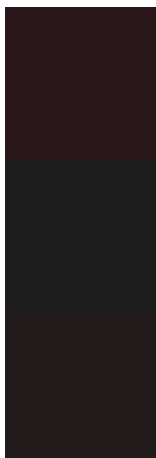
Deuteranomaly

28.7620, -2.3477, 6.3477

Tritanomaly

28.9090, -1.9271, 11.4808

Monochromacy



Original Color

28.9090, -1.9271, 11.4808

Achromatopsia

29.0000, 0.0000, 0.0000

Achromatomaly

29.2070, -0.5951, 4.2035

CSS Examples

Text

The CSS property to change the color of the text to YUV 28.9090, -1.9271, 11.4808 is called "color". The color property can be set on classes, ids or directly on the HTML element.

This example shows how text in the color `rgb(42, 23, 25)` looks like.

```
.text, #text, p{  
    color:rgb(42, 23, 25)  
}
```

If you want to add a text shadow in that color use the text-shadow property, you can generate a text shadow directly with our [CSS Text Shadow Generator](#).

Here you see how black text with a 4 pixel rgb(42, 23, 25) colored shadow looks like.

```
.shadow{ text-shadow: 4px 4px 2px rgb(42, 23, 25) }
```

Border

The CSS property to change the border of an element to YUV 28.9090, -1.9271, 11.4808 is called "border". The border property can be set on classes, ids or directly on the HTML element.

This example shows the color as border, it can be applied via the CSS property "border" or "border-color".

```
.border, #border, table{ border:4px solid rgb(42, 23, 25) }
```


If only the border color should be changed use the property border-color.

```
.border{ border-color:rgb(42, 23, 25) }
```

If you want to add a box shadow in that color use:

Here you see how a box with a 4 pixel rgb(42, 23, 25) colored shadow looks like.

```
.boxshadow{ -moz-box-shadow:4px 4px 4px  
4px rgb(42, 23, 25); -webkit-box-  
shadow:4px 4px 4px 4px rgb(42, 23, 25);  
box-shadow:4px 4px 4px 4px rgb(42, 23, 25)  
}
```

Background

The CSS property to change the background color of an element to YUV 28.9090, -1.9271, 11.4808 is called "background". The background property can be set on classes, ids or directly on the HTML element.

```
.background, #background, body{  
background: rgb(42, 23, 25) }
```

If only the background color should be changed can be used:

```
.background{ background-color: rgb(42, 23,  
25) }
```

This example shows the color as background, it is applied via the CSS property "background".

To optimize and compress your CSS code, you can use our [online CSS compressor and optimizer](#) based on csstidy. If you want to create a linear or radial gradient as background or border, check our [CSS Gradient Generator](#).

Hey! You found this booklet interesting? Support Converting Colors with the new Membership Option!

The pro membership hides all ads, plus gives you double the colors in the color bucket, and more awesome pro features!

[Learn more, Memberships starting at \\$2.50/m!](#)

**Follow me
on Twitter!**

@ConvertingColor