

# Converting Colors

YUV(31.0150, -9.3744, 20.1578)

Have a look what the booklet for  
YUV(31.0150, -9.3744, 20.1578)  
contains.

<b>YUV(31.0150, -9.3744, 20.1578)</b> .....	3
<b><i>Conversions</i></b> .....	4
<b><i>Details</i></b> .....	6
<b><i>Harmonies</i></b> .....	12
<b><i>Previews</i></b> .....	24
<b><i>Color Blindness Simulation</i></b> .....	28
<b><i>CSS Examples</i></b> .....	31

# Color

**YUV(31.0150, -9.3744,  
20.1578)**

# Conversions

## Conversions Part 1

Format	Color
Hex	36170C
RGB	54, 23, 12
RGB Percent	21%, 9%, 5%
CMY	0.7882, 0.9098, 0.9529
CMYK	0.00, 0.57, 0.78, 0.79
HSL	16°, 64%, 13%
HSV	16°, 78%, 21%
XYZ	1.8941, 1.4236, 0.5228
YIQ	31.0150, 22.0070, 3.1510

# Conversions

## Conversions Part 2

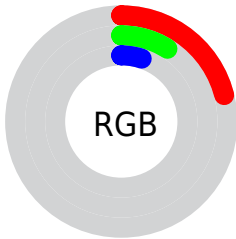
<b>Format</b>	<b>Color</b>
<b>R<sub>YB</sub></b>	54, 27, 12
Decimal	3544844
CIE <sub>Lab</sub>	12.11, 14.38, 13.41
CIE <sub>LCh</sub>	12, 19.659, 43.004
Y <sub>xy</sub>	1.4236, 0.4932, 0.3707
Android (android.graphics.Color)	4281734924 (0xFF36170C)
Y <sub>UV</sub>	31.0150, -9.3744, 20.1578
Hunter-Lab	11.9315, 7.4560, 5.7542

# Details

The YUV color **31.0150, -9.3744, 20.1578** is a dark color, and the websafe version is hex **330000**. A complement of this color would be **34.9850, 9.3744, -20.1578**, and the grayscale version is **31.0000, 0.0000, 0.0000**.

A 20% lighter version of the original color is **76.3960, -10.5482, 23.3317**, and **0.0000, 0.0000, 0.0000** is the 20% darker color. If you saturate the color by 10%, you get **28.0970, -10.4008, 22.7169**, and if you desaturate by 10%, it is **33.9330, -8.3480, 17.5988**.

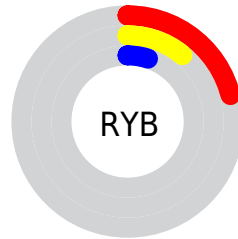
# Distribution



Red (21%)

Green (9%)

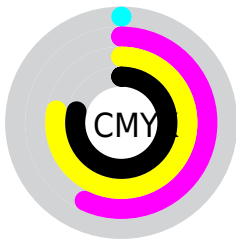
Blue (5%)



Red (21%)

Yellow (11%)

Blue (5%)

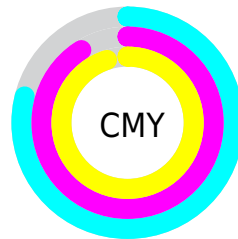


Cyan (0%)

Magenta (57%)

Yellow (78%)

Black (79%)



Cyan (79%)

Magenta (91%)

Yellow (95%)

# Brightness & Saturation Gradients

These gradients show how the YUV color 31.0150, -9.3744, 20.1578 changes by changing the brightness by 10 percent. The first figure shows a shift by +10% for each color and the second figure -10%.

Similar to the brightness gradients but the following saturation gradients show a change of the YUV color 31.0150, -9.3744, 20.1578 by changing the saturation by 10% instead.



■ 31.0150, -9.3744,  
20.1578

■ 31.0150, -9.3744,  
20.1578

■ 250.4860, -7.1416,  
3.9588

■ 9.8670, -4.8644,  
20.2876

■ 76.3960, -10.5482,  
23.3317

■ 0.0000, 0.0000,  
0.0000

■ 100.2930,  
-10.9904, 25.1760

■ 125.7770,  
-11.7221, 26.5056

■ 151.3750,  
-12.0169, 27.7351

■ 178.8590,  
-12.7485, 29.0647

■ 206.1580,

-12.8959, 29.6794

■ 230.1570,  
-11.4164, 21.7873

■ 31.0150, -9.3744,  
20.1578

■ 31.0150, -9.3744,  
20.1578

■ 28.0970, -10.4008,  
22.7169

■ 33.9330, -8.3480,  
17.5988

■ 25.0650, -11.8640,  
25.3760

■ 36.9650, -6.8847,  
14.9397

■ 24.3640, -12.0115,  
25.9908

■ 39.8830, -5.8583,  
12.3806

■ 42.9150, -4.3951,  
9.7215

■ 45.8330, -3.3687,  
7.1625

■ 48.7510, -2.3422,  
4.6034

■ 51.7830, -0.8790,  
1.9443

■ 54.7010, 0.1474,  
-0.6148

■ 57.7330, 1.6106,  
-3.2738

# Harmonies

## Analogous

The Analogous color harmony consists of three colors that are next to each other on the color wheel.



31.7470, -2.8333, 22.1469



31.0150, -9.3744, 20.1578



30.1900, -14.8837, 13.8654

# Triad

The Triadic color harmony groups three colors that are evenly spaced from another and form a triangle on the color wheel.



31.0150, -9.3744, 20.1578



24.9280, -0.9505, -21.8619



30.1910, 13.7098, -10.6915

# Complementary

The Complementary color scheme is a pair of colors which are on the opposite of each other on the color wheel.



31.0150, -9.3744, 20.1578



34.9850, 9.3744, -20.1578

# Split Complementary

Split-complementary colors differ from the complementary color scheme. The scheme consists of three colors, the original color and two neighbors of the complement color.



27.0430, 14.7688, -23.7167



31.0150, -9.3744, 20.1578



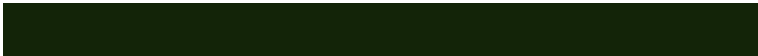
26.5240, 5.1647, -23.2615

# Square

The Square scheme is like the rectangle color scheme, but the four colors are evenly spaced on the color wheel.



31.0150, -9.3744, 20.1578



27.7250, -9.7244, -7.6518



28.0060, 10.8430, -24.5613



33.1500, 9.2931, 6.0075



# Rectangle

The Rectangle color scheme consists of four colors that form a rectangle on the color wheel.



31.0150, -9.3744, 20.1578



29.8580, -14.7200, 8.0175



28.0060, 10.8430, -24.5613



27.5920, 15.4841, -19.8132

# Sweetspot

The Sweet Spot groups the original color and five complimentary colors.



31.0150, -9.3744, 20.1578



62.1320, -3.5161, 7.7772



28.2060, 7.7864, 22.6213



30.1640, -2.0529, 5.1182



163.0000, 0.0000, 0.0000



36.0000, 0.0000, 0.0000



# Same Dimension

The Same Dimension uses a secret algorithm to generate beautiful new colors.



31.0150, -9.3744, 20.1578



34.7130, -14.6485, 31.8237



43.3420, -15.4516, 9.3471



26.4840, -0.7316, 1.3295



41.5960, -20.5068, 44.2043



98.9400, -48.7774, 105.2926



# Inverse Universe

The Inverse Universe completely reimagines the original color for something new.



34.9850, 9.3744, -20.1578



41.2870, 14.6485, -31.8237



22.6580, 15.4516, -9.3471



26.5160, 0.7316, -1.3295



50.4040, 20.5068, -44.2043

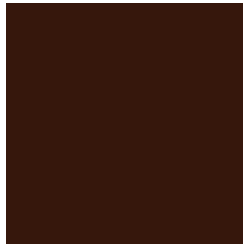


120.0600, 48.7774, -105.2926



# Previews

## White Background



This preview shows how the YUV color 31.0150, -9.3744, 20.1578 looks on a white background.

## Color Contrast Check

Large Text (above 18pt) WCAG AA ✓ Pass

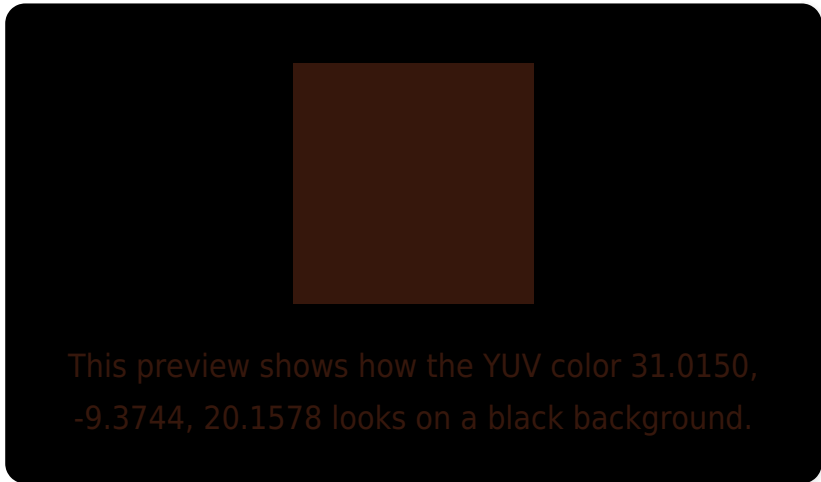
Any Text WCAG AA ✓ Pass

Large Text (above 18pt) WCAG AAA ✓ Pass

Any Text WCAG AAA ✓ Pass



# Black Background



## Color Contrast Check

Large Text (above 18pt) WCAG AA × Fail

Any Text WCAG AA × Fail

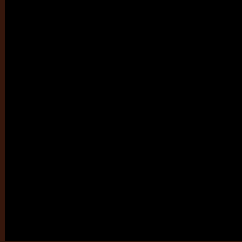
Large Text (above 18pt) WCAG AAA × Fail

Any Text WCAG AAA × Fail

If you want to check with other color combinations, try the [Color Contrast Checker](#).

**YUV 31.0150, -9.3744, 20.1578**

## **Background**



This preview shows how black text looks on a background with the YUV color 31.0150, -9.3744, 20.1578.



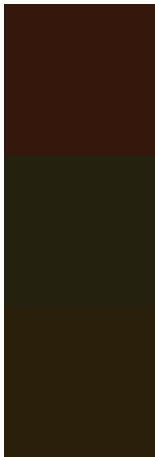
This preview shows how white text looks on a background with the YUV color 31.0150, -9.3744,



# Color Blindness Simulation

Color vision deficiency is a very complex topic, and I could not describe the different causes any better than Wikipedia does, so if you want to learn more, you should check out their [article about color blindness](#).

## Dichromacy



### Original Color

31.0150, -9.3744, 20.1578

### Protanopia

31.8450, -8.3046, 3.6439

### Deuteranopia

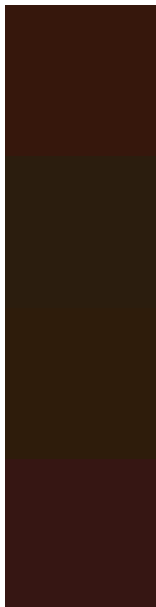
31.5960, -10.6468, 8.2473



## Tritanopia

31.6820, -4.2802, 19.5729

# Trichromacy



## Original Color

31.0150, -9.3744, 20.1578

## Protanomaly

31.4760, -8.6157, 10.1065

## Deuteranomaly

31.4440, -10.0789, 12.7656

## Tritanomaly

31.2260, -6.0274, 19.9728

# Monochromacy



## Original Color

31.0150, -9.3744, 20.1578

## Achromatopsia

31.0000, 0.0000, 0.0000

## Achromatomaly

30.8330, -3.3687, 7.1625

# CSS Examples

## Text

The CSS property to change the color of the text to YUV 31.0150, -9.3744, 20.1578 is called "color". The color property can be set on classes, ids or directly on the HTML element.

This example shows how text in the color `rgb(54, 23, 12)` looks like.

```
.text, #text, p{  
    color:rgb(54, 23, 12)  
}
```

If you want to add a text shadow in that color use the text-shadow property, you can generate a text shadow directly with our [CSS Text Shadow Generator](#).

Here you see how black text with a 4 pixel rgb(54, 23, 12) colored shadow looks like.

```
.shadow{ text-shadow: 4px 4px 2px rgb(54, 23, 12) }
```

## Border

The CSS property to change the border of an element to YUV 31.0150, -9.3744, 20.1578 is called "border". The border property can be set on classes, ids or directly on the HTML element.

This example shows the color as border, it can be applied via the CSS property "border" or "border-color".

```
.border, #border, table{ border:4px solid rgb(54, 23, 12) }
```



If only the border color should be changed use the property border-color.

```
.border{ border-color:rgb(54, 23, 12) }
```

If you want to add a box shadow in that color use:

Here you see how a box with a 4 pixel rgb(54, 23, 12) colored shadow looks like.

```
.boxshadow{ -moz-box-shadow:4px 4px 4px  
4px rgb(54, 23, 12); -webkit-box-  
shadow:4px 4px 4px 4px rgb(54, 23, 12);  
box-shadow:4px 4px 4px 4px rgb(54, 23, 12)  
}
```

# Background

The CSS property to change the background color of an element to YUV 31.0150, -9.3744, 20.1578 is called "background". The background property can be set on classes, ids or directly on the HTML element.

```
.background, #background, body{  
background: rgb(54, 23, 12) }
```

If only the background color should be changed can be used:

```
.background{ background-color: rgb(54, 23,  
12) }
```

This example shows the color as background, it is applied via the CSS property "background".

To optimize and compress your CSS code, you can use our [online CSS compressor and optimizer](#) based on csstidy. If you want to create a linear or radial gradient as background or border, check our [CSS Gradient Generator](#).

# Hey! You found this booklet interesting? Support Converting Colors with the new Membership Option!

The pro membership hides all ads, plus gives you double the colors in the color bucket, and more awesome pro features!

**[Learn more, Memberships starting at \\$2.50/m!](#)**

**Follow me  
on Twitter!**

@ConvertingColor