

Converting Colors

YUV(32.4500, -12.5469,
11.0063)

Have a look what the booklet for
YUV(32.4500, -12.5469, 11.0063)
contains.

YUV(32.4500, -12.5469, 11.0063)	3
<i>Conversions</i>	4
<i>Details</i>	6
<i>Harmonies</i>	12
<i>Previews</i>	24
<i>Color Blindness Simulation</i>	28
<i>CSS Examples</i>	31

Color

**YUV(32.4500, -12.5469,
11.0063)**

Conversions

Conversions Part 1

Format	Color
Hex	2D1F07
RGB	45, 31, 7
RGB Percent	18%, 12%, 3%
CMY	0.8235, 0.8784, 0.9725
CMYK	0.00, 0.31, 0.84, 0.82
HSL	38°, 73%, 10%
HSV	38°, 84%, 18%
XYZ	1.6105, 1.5532, 0.4159
YIQ	32.4500, 16.0480, -4.4960

Conversions

Conversions Part 2

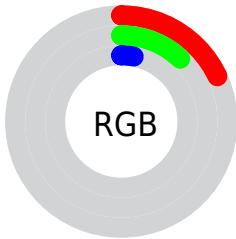
Format	Color
RYB	29, 45, 7
Decimal	2957063
CIELab	12.94, 3.67, 16.37
CIELCh	13, 16.772, 77.352
Yxy	1.5532, 0.4499, 0.4339
Android (android.graphics.Color)	4281147143 (0xFF2D1F07)
YUV	32.4500, -12.5469, 11.0063
Hunter-Lab	12.4628, 1.2572, 6.7452

Details

The YUV color **32.4500, -12.5469, 11.0063** is a dark color, and the websafe version is hex **333300**. A complement of this color would be **19.5500, 12.5468, -11.0064**, and the grayscale version is **33.0000, 0.0000, 0.0000**.

A 20% lighter version of the original color is **77.4610, -12.5523, 12.7507**, and **0.0000, 0.0000, 0.0000** is the 20% darker color. If you saturate the color by 10%, you get **30.7060, -14.1521, 12.5358**, and if you desaturate by 10%, it is **34.0800, -11.3784, 9.5768**.

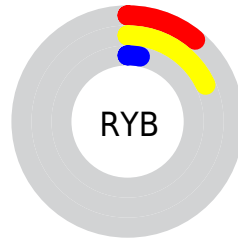
Distribution



Red (18%)

Green (12%)

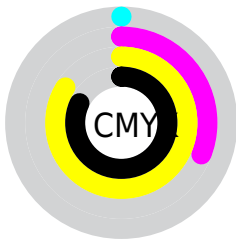
Blue (3%)



Red (11%)

Yellow (18%)

Blue (3%)

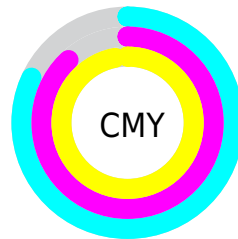


Cyan (0%)

Magenta (31%)

Yellow (84%)

Black (82%)



Cyan (82%)

Magenta (88%)

Yellow (97%)

Brightness & Saturation Gradients

These gradients show how the YUV color 32.4500, -12.5469, 11.0063 changes by changing the brightness by 10 percent. The first figure shows a shift by +10% for each color and the second figure -10%.

Similar to the brightness gradients but the following saturation gradients show a change of the YUV color 32.4500, -12.5469, 11.0063 by changing the saturation by 10% instead.

■ 32.4500, -12.5469,
11.0063

■ 32.4500, -12.5469,
11.0063

■ 252.3780,
-10.0464, 2.2995

■ 10.6870, -5.2687,
9.9215

■ 77.4610, -12.5523,
12.7507

■ 0.0000, 0.0000,
0.0000

■ 101.6460,
-13.1365, 13.4655

■ 126.2440,
-13.4313, 14.6950

■ 152.4290,
-14.0155, 15.4098

■ 179.2010,
-14.8891, 15.6097

■ 206.7990,

-15.1839, 16.8393

■ 235.0980,
-15.3313, 17.4541

■ 32.4500, -12.5469,
11.0063

■ 32.4500, -12.5469,
11.0063

■ 30.7060, -14.1521,
12.5358

■ 34.0800, -11.3784,
9.5768

■ 29.8910, -14.7363,
13.2506

■ 35.2370, -9.4838,
8.5622

■ 36.8670, -8.3154,
7.1326

■ 38.6110, -6.7102,
5.6032

■ 39.6540, -5.2524,
4.6884

■ 41.3980, -3.6472,
3.1590

■ 43.1420, -2.0420,
1.6295

■ 44.1850, -0.5842,
0.7148

■ 45.8150, 0.5842,
-0.7148

Harmonies

Analogous

The Analogous color harmony consists of three colors that are next to each other on the color wheel.



33.2210, -8.4900, 16.4692



32.4500, -12.5469, 11.0063



31.5090, -12.0829, 2.1846

Triad

The Triadic color harmony groups three colors that are evenly spaced from another and form a triangle on the color wheel.



32.4500, -12.5469, 11.0063



27.4530, 6.1857, -24.0763



34.8790, 6.9617, 7.1221

Complementary

The Complementary color scheme is a pair of colors which are on the opposite of each other on the color wheel.



32.4500, -12.5469, 11.0063



19.5500, 12.5468, -11.0064

Split Complementary

Split-complementary colors differ from the complementary color scheme. The scheme consists of three colors, the original color and two neighbors of the complement color.



32.9420, 11.3676, -6.0881



32.4500, -12.5469, 11.0063



28.0060, 10.8430, -24.5613

Square

The Square scheme is like the rectangle color scheme, but the four colors are evenly spaced on the color wheel.



32.4500, -12.5469, 11.0063



26.9820, 0.5019, -21.0322



27.5160, 14.0426, -24.1315



34.0820, 2.4246, 15.7141

Rectangle

The Rectangle color scheme consists of four colors that form a rectangle on the color wheel.



32.4500, -12.5469, 11.0063



30.9750, -8.8617, -4.3631



27.5160, 14.0426, -24.1315



34.3130, 8.7197, 3.2335

Sweetspot

The Sweet Spot groups the original color and five complimentary colors.



32.4500, -12.5469, 11.0063



53.7680, -4.8156, 4.5885



20.0720, 0.9505, 21.8619



27.5120, -3.2104, 3.0590



158.0000, 0.0000, 0.0000



31.0000, 0.0000, 0.0000

Same Dimension

The Same Dimension uses a secret algorithm to generate beautiful new colors.



32.4500, -12.5469, 11.0063



39.3600, -19.4045, 17.2243



39.4720, -16.0087, 1.3401



22.1850, -0.5842, 0.7148



58.2980, -28.7409, 25.1717



143.2310, -70.6129, 62.0644

Inverse Universe

The Inverse Universe completely reimagines the original color for something new.



19.5500, 12.5468, -11.0064



19.6400, 19.4045, -17.2243



12.5280, 16.0087, -1.3401



21.8150, 0.5842, -0.7148



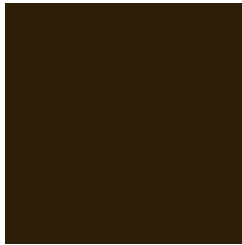
28.7020, 28.7409, -25.1717



70.7690, 70.6129, -62.0644

Previews

White Background



This preview shows how the YUV color 32.4500, -12.5469, 11.0063 looks on a white background.

Color Contrast Check

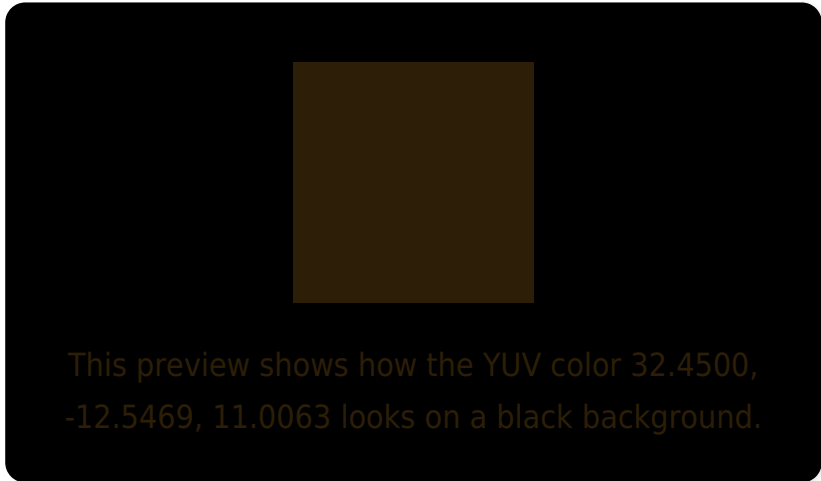
Large Text (above 18pt) WCAG AA ✓ Pass

Any Text WCAG AA ✓ Pass

Large Text (above 18pt) WCAG AAA ✓ Pass

Any Text WCAG AAA ✓ Pass

Black Background



Color Contrast Check

Large Text (above 18pt) WCAG AA × Fail

Any Text WCAG AA × Fail

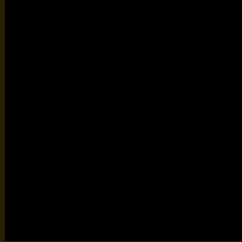
Large Text (above 18pt) WCAG AAA × Fail

Any Text WCAG AAA × Fail

If you want to check with other color combinations, try the [Color Contrast Checker](#).

YUV 32.4500, -12.5469, 11.0063

Background



This preview shows how black text looks on a background with the YUV color 32.4500, -12.5469, 11.0063.

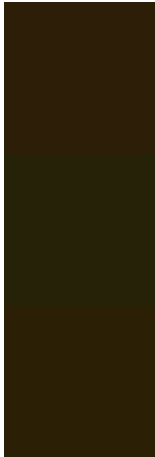


This preview shows how white text looks on a background with the YUV color 32.4500, -12.5469,

Color Blindness Simulation

Color vision deficiency is a very complex topic, and I could not describe the different causes any better than Wikipedia does, so if you want to learn more, you should check out their [article about color blindness](#).

Dichromacy



Original Color

32.4500, -12.5469, 11.0063

Protanopia

32.2320, -11.9464, 5.0585

Deuteranopia

32.3250, -12.9782, 9.3620



Tritanopia

34.3110, -1.6323, 10.2513

Trichromacy



Original Color

32.4500, -12.5469, 11.0063

Protanomaly

32.5420, -12.0992, 7.4177

Deuteranomaly

32.6240, -13.1256, 9.9768

Tritanomaly

33.8720, -5.8529, 10.6363

Monochromacy



Original Color

32.4500, -12.5469, 11.0063

Achromatopsia

32.0000, 0.0000, 0.0000

Achromatomaly

32.4690, -4.6682, 3.9737

CSS Examples

Text

The CSS property to change the color of the text to YUV 32.4500, -12.5469, 11.0063 is called "color". The color property can be set on classes, ids or directly on the HTML element.

This example shows how text in the color `rgb(45, 31, 7)` looks like.

```
.text, #text, p{  
    color:rgb(45, 31, 7)  
}
```

If you want to add a text shadow in that color use the text-shadow property, you can generate a text shadow directly with our [CSS Text Shadow Generator](#).

Here you see how black text with a 4 pixel rgb(45, 31, 7) colored shadow looks like.

```
.shadow{ text-shadow: 4px 4px 2px rgb(45, 31, 7) }
```

Border

The CSS property to change the border of an element to YUV 32.4500, -12.5469, 11.0063 is called "border". The border property can be set on classes, ids or directly on the HTML element.

This example shows the color as border, it can be applied via the CSS property "border" or "border-color".

```
.border, #border, table{ border:4px solid rgb(45, 31, 7) }
```


If only the border color should be changed use the property `border-color`.

```
.border{ border-color:rgb(45, 31, 7) }
```

If you want to add a box shadow in that color use:

Here you see how a box with a 4 pixel `rgb(45, 31, 7)` colored shadow looks like.

```
.boxshadow{ -moz-box-shadow:4px 4px 4px  
4px rgb(45, 31, 7); -webkit-box-shadow:4px  
4px 4px 4px rgb(45, 31, 7); box-shadow:4px  
4px 4px 4px rgb(45, 31, 7) }
```

Background

The CSS property to change the background color of an element to YUV 32.4500, -12.5469, 11.0063 is called "background". The background property can be set on classes, ids or directly on the HTML element.

```
.background, #background, body{  
background: rgb(45, 31, 7) }
```

If only the background color should be changed can be used:

```
.background{ background-color: rgb(45, 31,  
7) }
```

This example shows the color as background, it is applied via the CSS property "background".

To optimize and compress your CSS code, you can use our [online CSS compressor and optimizer](#) based on csstidy. If you want to create a linear or radial gradient as background or border, check our [CSS Gradient Generator](#).

Hey! You found this booklet interesting? Support Converting Colors with the new Membership Option!

The pro membership hides all ads, plus gives you double the colors in the color bucket, and more awesome pro features!

[Learn more, Memberships starting at \\$2.50/m!](#)

**Follow me
on Twitter!**

@ConvertingColor