

Converting Colors

YUV(34.7790, -1.3700, 19.4878)

Have a look what the booklet for
YUV(34.7790, -1.3700, 19.4878)
contains.

YUV(34.7790, -1.3700, 19.4878)	3
<i>Conversions</i>	4
<i>Details</i>	6
<i>Harmonies</i>	12
<i>Previews</i>	24
<i>Color Blindness Simulation</i>	28
<i>CSS Examples</i>	31

Color

**YUV(34.7790, -1.3700,
19.4878)**

Conversions

Conversions Part 1

Format	Color
Hex	391820
RGB	57, 24, 32
RGB Percent	22%, 9%, 13%
CMY	0.7765, 0.9059, 0.8745
CMYK	0.00, 0.58, 0.44, 0.78
HSL	345°, 41%, 16%
HSV	345°, 58%, 22%
XYZ	2.2747, 1.6274, 1.5607
YIQ	34.7790, 17.1000, 9.4840

Conversions

Conversions Part 2

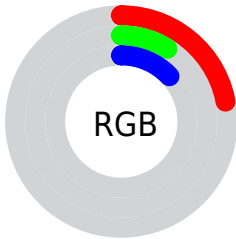
Format	Color
RYB	57, 24, 32
Decimal	3741728
CIELab	13.40, 17.38, 2.10
CIELCh	13, 17.508, 6.888
Yxy	1.6274, 0.4164, 0.2979
Android (android.graphics.Color)	4281931808 (0xFF391820)
YUV	34.7790, -1.3700, 19.4878
Hunter-Lab	12.7570, 9.5034, 1.6762

Details

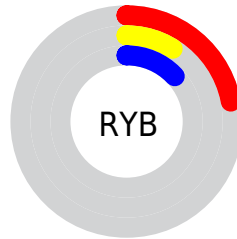
The YUV color **34.7790, -1.3700, 19.4878** is a dark color, and the websafe version is hex **330000**. A complement of this color would be **46.2210, 1.3700, -19.4878**, and the grayscale version is **35.0000, 0.0000, 0.0000**.

A 20% lighter version of the original color is **80.2740, -2.1071, 22.5617**, and **0.0000, 0.0000, 0.0000** is the 20% darker color. If you saturate the color by 10%, you get **30.8010, -1.3809, 22.9765**, and if you desaturate by 10%, it is **38.7570, -1.3592, 15.9991**.

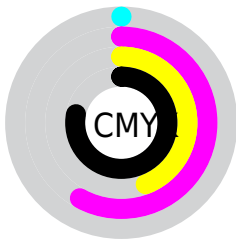
Distribution



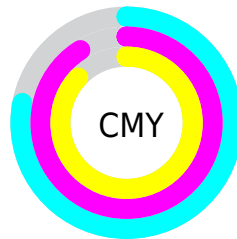
- Red (22%)
- Green (9%)
- Blue (13%)



- Red (22%)
- Yellow (9%)
- Blue (13%)



- Cyan (0%)
- Magenta (58%)
- Yellow (44%)
- Black (78%)



- Cyan (78%)
- Magenta (91%)
- Yellow (87%)

Brightness & Saturation Gradients

These gradients show how the YUV color 34.7790, -1.3700, 19.4878 changes by changing the brightness by 10 percent. The first figure shows a shift by +10% for each color and the second figure -10%.

Similar to the brightness gradients but the following saturation gradients show a change of the YUV color 34.7790, -1.3700, 19.4878 by changing the saturation by 10% instead.

■ 34.7790, -1.3700,
19.4878

■ 34.7790, -1.3700,
19.4878

■ 253.8260, 0.5788,
1.0296

■ 11.9750, -1.9597,
21.9469

■ 80.2740, -2.1071,
22.5617

■ 0.0000, 0.0000,
0.0000

■ 104.5730, -2.2545,
23.1765

■ 130.1710, -2.5493,
24.4060

■ 156.3560, -3.1335,
25.1208

■ 183.0680, -2.9915,
26.2504

■ 210.6660, -3.2863,

27.4799

234.2950, -0.6384,
18.1583

34.7790, -1.3700,
19.4878

34.7790, -1.3700,
19.4878

30.8010, -1.3809,
22.9765

38.7570, -1.3592,
15.9991

27.2960, -2.1179,
26.0504

42.2620, -0.6222,
12.9252

23.3180, -2.1288,
29.5391

46.2400, -0.6113,
9.4365

19.3400, -2.1396,
33.0278

50.2180, -0.6005,
5.9478

18.6390, -2.2870,
33.6426

54.3100, -0.1528,
2.3591

■ 57.7010, 0.1474,
-0.6148

■ 61.6790, 0.1583,
-4.1035

■ 65.7710, 0.6059,
-7.6922

■ 69.1620, 0.9061,
-10.6661

Harmonies

Analogous

The Analogous color harmony consists of three colors that are next to each other on the color wheel.



35.8260, 4.0298, 14.1846



34.7790, -1.3700, 19.4878



34.2860, -7.0430, 19.0432

Triad

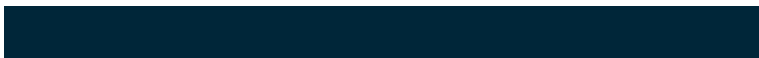
The Triadic color harmony groups three colors that are evenly spaced from another and form a triangle on the color wheel.



34.7790, -1.3700, 19.4878



31.5620, -9.1511, -4.8779



28.8040, 13.9006, -25.2611

Complementary

The Complementary color scheme is a pair of colors which are on the opposite of each other on the color wheel.



34.7790, -1.3700, 19.4878



46.2210, 1.3700, -19.4878

Split Complementary

Split-complementary colors differ from the complementary color scheme. The scheme consists of three colors, the original color and two neighbors of the complement color.



29.0660, 9.8275, -25.4909



34.7790, -1.3700, 19.4878



28.9070, -2.4192, -17.4584

Square

The Square scheme is like the rectangle color scheme, but the four colors are evenly spaced on the color wheel.



34.7790, -1.3700, 19.4878



32.8900, -13.2568, 5.3585



28.2850, 4.2965, -24.8059



32.5390, 12.5523, -12.7507

Rectangle

The Rectangle color scheme consists of four colors that form a rectangle on the color wheel.



34.7790, -1.3700, 19.4878



34.0530, -10.3791, 15.7395



28.2850, 4.2965, -24.8059



29.0490, 12.3008, -25.4760

Sweetspot

The Sweet Spot groups the original color and five complimentary colors.



34.7790, -1.3700, 19.4878



65.2290, -0.6059, 7.6922



35.2370, 10.7292, 12.0702



33.2070, -0.5951, 4.2035



166.0000, 0.0000, 0.0000



38.0000, 0.0000, 0.0000

Same Dimension

The Same Dimension uses a secret algorithm to generate beautiful new colors.



34.7790, -1.3700, 19.4878



39.6170, -2.2762, 30.1539



38.5630, -7.1796, 16.1692



26.0110, -0.0054, 1.7444



30.0160, -3.9519, 54.3600



71.5230, -9.1318, 129.3373

Inverse Universe

The Inverse Universe completely reimagines the original color for something new.



34.7790, -1.3700, 19.4878



39.6170, -2.2762, 30.1539



42.4370, 7.1796, -16.1692



26.0110, -0.0054, 1.7444



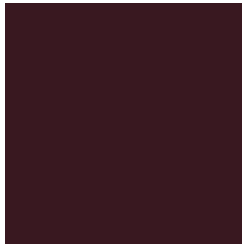
30.0160, -3.9519, 54.3600



71.5230, -9.1318, 129.3373

Previews

White Background



This preview shows how the YUV color 34.7790, -1.3700, 19.4878 looks on a white background.

Color Contrast Check

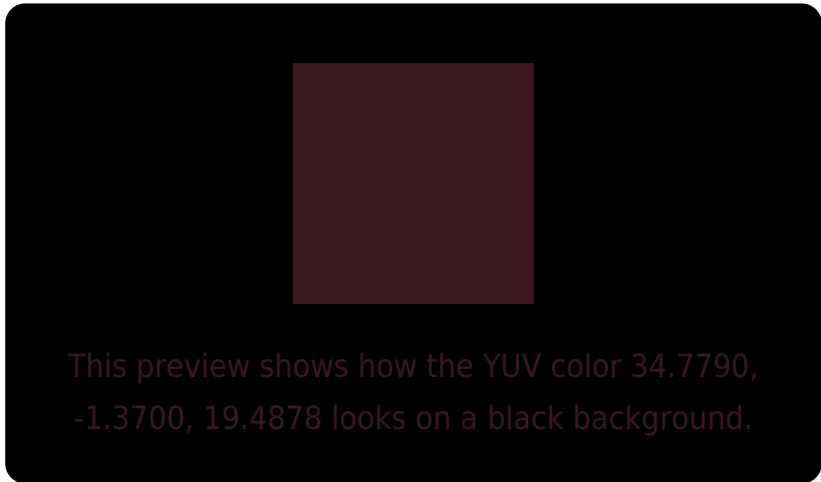
Large Text (above 18pt) WCAG AA ✓ Pass

Any Text WCAG AA ✓ Pass

Large Text (above 18pt) WCAG AAA ✓ Pass

Any Text WCAG AAA ✓ Pass

Black Background



Color Contrast Check

Large Text (above 18pt) WCAG AA × Fail

Any Text WCAG AA × Fail

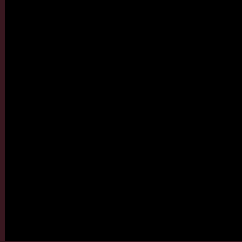
Large Text (above 18pt) WCAG AAA × Fail

Any Text WCAG AAA × Fail

If you want to check with other color combinations, try the [Color Contrast Checker](#).

YUV 34.7790, -1.3700, 19.4878

Background



This preview shows how black text looks on a background with the YUV color 34.7790, -1.3700, 19.4878.



This preview shows how white text looks on a background with the YUV color 34.7790, -1.3700,

Color Blindness Simulation

Color vision deficiency is a very complex topic, and I could not describe the different causes any better than Wikipedia does, so if you want to learn more, you should check out their [article about color blindness](#).

Dichromacy



Original Color

34.7790, -1.3700, 19.4878

Protanopia

35.3420, 1.3104, -0.2999

Deuteranopia

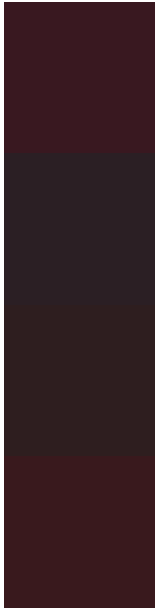
35.3380, -2.6316, 4.0886



Tritanopia

34.7960, -3.8434, 19.4729

Trichromacy



Original Color

34.7790, -1.3700, 19.4878

Protanomaly

35.1580, 0.4151, 6.8774

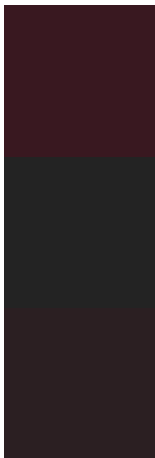
Deuteranomaly

34.8980, -1.9217, 9.7365

Tritanomaly

35.0240, -2.9698, 19.2730

Monochromacy



Original Color

34.7790, -1.3700, 19.4878

Achromatopsia

35.0000, 0.0000, 0.0000

Achromatomaly

34.9300, -0.4585, 7.0774

CSS Examples

Text

The CSS property to change the color of the text to YUV 34.7790, -1.3700, 19.4878 is called "color". The color property can be set on classes, ids or directly on the HTML element.

This example shows how text in the color `rgb(57, 24, 32)` looks like.

```
.text, #text, p{  
    color:rgb(57, 24, 32)  
}
```

If you want to add a text shadow in that color use the text-shadow property, you can generate a text shadow directly with our [CSS Text Shadow Generator](#).

Here you see how black text with a 4 pixel rgb(57, 24, 32) colored shadow looks like.

```
.shadow{ text-shadow: 4px 4px 2px rgb(57, 24, 32) }
```

Border

The CSS property to change the border of an element to YUV 34.7790, -1.3700, 19.4878 is called "border". The border property can be set on classes, ids or directly on the HTML element.

This example shows the color as border, it can be applied via the CSS property "border" or "border-color".

```
.border, #border, table{ border:4px solid rgb(57, 24, 32) }
```


If only the border color should be changed use the property border-color.

```
.border{ border-color:rgb(57, 24, 32) }
```

If you want to add a box shadow in that color use:

Here you see how a box with a 4 pixel rgb(57, 24, 32) colored shadow looks like.

```
.boxshadow{ -moz-box-shadow:4px 4px 4px  
4px rgb(57, 24, 32); -webkit-box-  
shadow:4px 4px 4px 4px rgb(57, 24, 32);  
box-shadow:4px 4px 4px 4px rgb(57, 24, 32)  
}
```

Background

The CSS property to change the background color of an element to YUV 34.7790, -1.3700, 19.4878 is called "background". The background property can be set on classes, ids or directly on the HTML element.

```
.background, #background, body{  
background: rgb(57, 24, 32) }
```

If only the background color should be changed can be used:

```
.background{ background-color: rgb(57, 24,  
32) }
```

This example shows the color as background, it is applied via the CSS property "background".

To optimize and compress your CSS code, you can use our [online CSS compressor and optimizer](#) based on csstidy. If you want to create a linear or radial gradient as background or border, check our [CSS Gradient Generator](#).

Hey! You found this booklet interesting? Support Converting Colors with the new Membership Option!

The pro membership hides all ads, plus gives you double the colors in the color bucket, and more awesome pro features!

[Learn more, Memberships starting at \\$2.50/m!](#)

**Follow me
on Twitter!**

@ConvertingColor