

Converting Colors

YUV(36.3450, -6.5791, 10.2214)

Have a look what the booklet for
YUV(36.3450, -6.5791, 10.2214)
contains.

YUV(36.3450, -6.5791, 10.2214)	3
<i>Conversions</i>	4
<i>Details</i>	6
<i>Harmonies</i>	12
<i>Previews</i>	24
<i>Color Blindness Simulation</i>	28
<i>CSS Examples</i>	31

Color

**YUV(36.3450, -6.5791,
10.2214)**

Conversions

Conversions Part 1

Format	Color
Hex	302117
RGB	48, 33, 23
RGB Percent	19%, 13%, 9%
CMY	0.8118, 0.8706, 0.9098
CMYK	0.00, 0.31, 0.52, 0.81
HSL	24°, 35%, 14%
HSV	24°, 52%, 19%
XYZ	1.9174, 1.7780, 1.0527
YIQ	36.3450, 12.1500, 0.0700

Conversions

Conversions Part 2

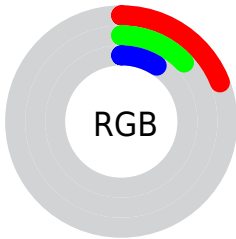
Format	Color
R_{YB}	48, 40, 23
Decimal	3154199
CIE _{Lab}	14.28, 5.61, 9.59
CIE _{LCh}	14, 11.114, 59.670
Yxy	1.7780, 0.4038, 0.3745
Android (android.graphics.Color)	4281344279 (0xFF302117)
YUV	36.3450, -6.5791, 10.2214
Hunter-Lab	13.3340, 2.3339, 4.6528

Details

The YUV color **36.3450, -6.5791, 10.2214** is a dark color, and the websafe version is hex **333333**. A complement of this color would be **34.6550, 6.5791, -10.2214**, and the grayscale version is **36.0000, 0.0000, 0.0000**.

A 20% lighter version of the original color is **81.1280, -7.4581, 12.1657**, and **0.0000, 0.0000, 0.0000** is the 20% darker color. If you saturate the color by 10%, you get **34.0140, -7.8949, 12.2657**, and if you desaturate by 10%, it is **38.6760, -5.2633, 8.1771**.

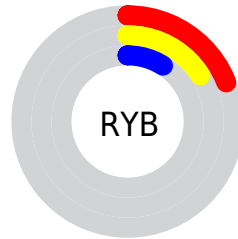
Distribution



 Red (19%)

 Green (13%)

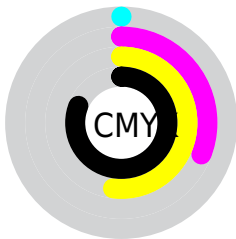
 Blue (9%)



 Red (19%)

 Yellow (16%)

 Blue (9%)

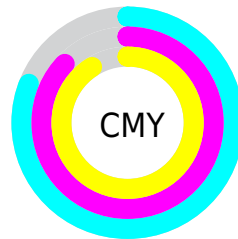


 Cyan (0%)


 Magenta (31%)

 Yellow (52%)

 Black (81%)



 Cyan (81%)

 Magenta (87%)

 Yellow (91%)

Brightness & Saturation Gradients

These gradients show how the YUV color 36.3450, -6.5791, 10.2214 changes by changing the brightness by 10 percent. The first figure shows a shift by +10% for each color and the second figure -10%.

Similar to the brightness gradients but the following saturation gradients show a change of the YUV color 36.3450, -6.5791, 10.2214 by changing the saturation by 10% instead.

■ 36.3450, -6.5791,
10.2214

■ 36.3450, -6.5791,
10.2214

■ 254.3160, -2.6208,
0.5999

■ 14.8290, -7.3107,
11.5510

■ 81.1280, -7.4581,
12.1657

■ 0.0000, 0.0000,
0.0000

■ 105.3130, -8.0423,
12.8805

■ 130.6120, -8.1897,
13.4953

■ 156.7970, -8.7739,
14.2100

■ 183.6830, -9.2107,
14.3100

■ 211.3950, -9.0687,

15.4396

■ 238.6830, -9.2107,
14.3100

■ 36.3450, -6.5791,
10.2214

■ 36.3450, -6.5791,
10.2214

■ 34.0140, -7.8949,
12.2657

■ 38.6760, -5.2633,
8.1771

■ 31.6830, -9.2107,
14.3100

■ 41.0070, -3.9475,
6.1329

■ 29.4660, -10.0897,
16.2543

■ 43.2240, -3.0684,
4.1886

■ 27.1350, -11.4056,
18.2986

■ 45.5550, -1.7526,
2.1443

■ 25.5050, -12.5740,
19.7281

■ 47.2990, -0.1474,
0.6148

■ 49.6300, 1.1684,
-1.4295

■ 51.9610, 2.4842,
-3.4738

■ 54.1780, 3.3632,
-5.4181

■ 56.5090, 4.6791,
-7.4624

Harmonies

Analogous

The Analogous color harmony consists of three colors that are next to each other on the color wheel.



36.7520, -3.8217, 12.4955



36.3450, -6.5791, 10.2214



36.0840, -7.4364, 5.1883

Triad

The Triadic color harmony groups three colors that are evenly spaced from another and form a triangle on the color wheel.



36.3450, -6.5791, 10.2214



32.3680, 1.7906, -14.3547



36.7210, 6.5465, 0.2447

Complementary

The Complementary color scheme is a pair of colors which are on the opposite of each other on the color wheel.



36.3450, -6.5791, 10.2214



34.6550, 6.5791, -10.2214

Split Complementary

Split-complementary colors differ from the complementary color scheme. The scheme consists of three colors, the original color and two neighbors of the complement color.



35.4210, 8.1734, -8.2622



36.3450, -6.5791, 10.2214



31.4860, 6.1694, -18.8432

Square

The Square scheme is like the rectangle color scheme, but the four colors are evenly spaced on the color wheel.



36.3450, -6.5791, 10.2214



33.8480, -2.8831, -8.6367



32.9640, 7.9057, -15.7544



37.5540, 3.1779, 7.4071

Rectangle

The Rectangle color scheme consists of four colors that form a rectangle on the color wheel.



36.3450, -6.5791, 10.2214



34.8770, -6.8414, 0.9849



32.9640, 7.9057, -15.7544



36.2260, 7.2836, -2.8292

Sweetspot

The Sweet Spot groups the original color and five complimentary colors.



36.3450, -6.5791, 10.2214



56.3380, -2.6316, 4.0886



32.1850, 2.8668, 13.8698



27.9680, -1.4632, 2.6591



158.0000, 0.0000, 0.0000



31.0000, 0.0000, 0.0000

Same Dimension

The Same Dimension uses a secret algorithm to generate beautiful new colors.



36.3450, -6.5791, 10.2214



43.1670, -9.9423, 15.6395



43.3890, -10.0518, 4.0438



22.1850, -0.5842, 0.7148



46.5580, -22.9531, 35.4676



114.4680, -56.4327, 87.2896

Inverse Universe

The Inverse Universe completely reimagines the original color for something new.



34.6550, 6.5791, -10.2214



40.8330, 9.9423, -15.6395



27.0240, 10.3412, -3.5290



21.8150, 0.5842, -0.7148



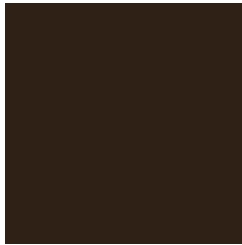
40.4420, 22.9531, -35.4676



100.1190, 56.1433, -87.8044

Previews

White Background



This preview shows how the YUV color 36.3450, -6.5791, 10.2214 looks on a white background.

Color Contrast Check

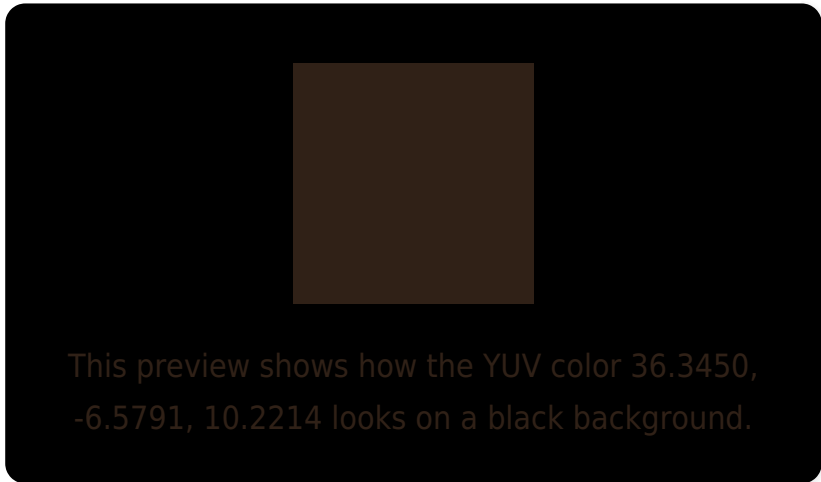
Large Text (above 18pt) WCAG AA ✓ Pass

Any Text WCAG AA ✓ Pass

Large Text (above 18pt) WCAG AAA ✓ Pass

Any Text WCAG AAA ✓ Pass

Black Background



Color Contrast Check

Large Text (above 18pt) WCAG AA × Fail

Any Text WCAG AA × Fail

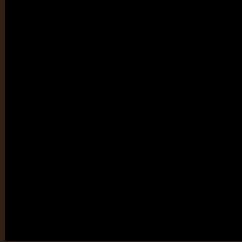
Large Text (above 18pt) WCAG AAA × Fail

Any Text WCAG AAA × Fail

If you want to check with other color combinations, try the [Color Contrast Checker](#).

YUV 36.3450, -6.5791, 10.2214

Background



This preview shows how black text looks on a background with the YUV color 36.3450, -6.5791, 10.2214.



This preview shows how white text looks on a background with the YUV color 36.3450, -6.5791,

Color Blindness Simulation

Color vision deficiency is a very complex topic, and I could not describe the different causes any better than Wikipedia does, so if you want to learn more, you should check out their [article about color blindness](#).

Dichromacy



Original Color

36.3450, -6.5791, 10.2214

Protanopia

35.8280, -5.8312, 3.6588

Deuteranopia

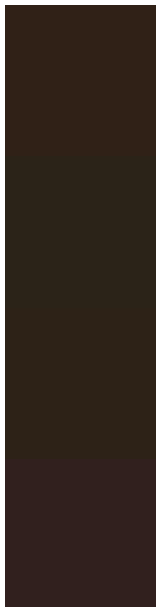
36.3230, -6.5682, 6.7327



Tritanopia

37.3110, -1.6323, 10.2513

Trichromacy



Original Color

36.3450, -6.5791, 10.2214

Protanomaly

36.1380, -5.9840, 6.0180

Deuteranomaly

36.0350, -6.4263, 7.8623

Tritanomaly

36.8550, -3.3795, 10.6512

Monochromacy



Original Color

36.3450, -6.5791, 10.2214

Achromatopsia

36.0000, 0.0000, 0.0000

Achromatomaly

36.0390, -2.4842, 3.4738

CSS Examples

Text

The CSS property to change the color of the text to YUV 36.3450, -6.5791, 10.2214 is called "color". The color property can be set on classes, ids or directly on the HTML element.

This example shows how text in the color `rgb(48, 33, 23)` looks like.

```
.text, #text, p{  
    color:rgb(48, 33, 23)  
}
```

If you want to add a text shadow in that color use the text-shadow property, you can generate a text shadow directly with our [CSS Text Shadow Generator](#).

Here you see how black text with a 4 pixel rgb(48, 33, 23) colored shadow looks like.

```
.shadow{ text-shadow: 4px 4px 2px rgb(48, 33, 23) }
```

Border

The CSS property to change the border of an element to YUV 36.3450, -6.5791, 10.2214 is called "border". The border property can be set on classes, ids or directly on the HTML element.

This example shows the color as border, it can be applied via the CSS property "border" or "border-color".

```
.border, #border, table{ border:4px solid rgb(48, 33, 23) }
```


If only the border color should be changed use the property border-color.

```
.border{ border-color:rgb(48, 33, 23) }
```

If you want to add a box shadow in that color use:

Here you see how a box with a 4 pixel rgb(48, 33, 23) colored shadow looks like.

```
.boxshadow{ -moz-box-shadow:4px 4px 4px  
4px rgb(48, 33, 23); -webkit-box-  
shadow:4px 4px 4px 4px rgb(48, 33, 23);  
box-shadow:4px 4px 4px 4px rgb(48, 33, 23)  
}
```

Background

The CSS property to change the background color of an element to YUV 36.3450, -6.5791, 10.2214 is called "background". The background property can be set on classes, ids or directly on the HTML element.

```
.background, #background, body{  
background: rgb(48, 33, 23) }
```

If only the background color should be changed can be used:

```
.background{ background-color: rgb(48, 33,  
23) }
```

This example shows the color as background, it is applied via the CSS property "background".

To optimize and compress your CSS code, you can use our [online CSS compressor and optimizer](#) based on csstidy. If you want to create a linear or radial gradient as background or border, check our [CSS Gradient Generator](#).

Hey! You found this booklet interesting? Support Converting Colors with the new Membership Option!

The pro membership hides all ads, plus gives you double the colors in the color bucket, and more awesome pro features!

[Learn more, Memberships starting at \\$2.50/m!](#)

**Follow me
on Twitter!**

@ConvertingColor