

Converting Colors

YUV(37.7740, -3.8326, 15.9842)

Have a look what the booklet for
YUV(37.7740, -3.8326, 15.9842)
contains.

YUV(37.7740, -3.8326, 15.9842)	3
<i>Conversions</i>	4
<i>Details</i>	6
<i>Harmonies</i>	12
<i>Previews</i>	24
<i>Color Blindness Simulation</i>	28
<i>CSS Examples</i>	31

Color

**YUV(37.7740, -3.8326,
15.9842)**

Conversions

Conversions Part 1

Format	Color
Hex	381E1E
RGB	56, 30, 30
RGB Percent	22%, 12%, 12%
CMY	0.7804, 0.8824, 0.8824
CMYK	0.00, 0.46, 0.46, 0.78
HSL	0°, 30%, 17%
HSV	0°, 46%, 22%
XYZ	2.3295, 1.8630, 1.4651
YIQ	37.7740, 15.4960, 5.5120

Conversions

Conversions Part 2

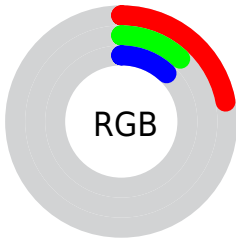
Format	Color
R _{YB}	56, 30, 30
Decimal	3677726
CIE Lab	14.75, 12.69, 5.45
CIE LCh	15, 13.809, 23.244
Yxy	1.8630, 0.4117, 0.3293
Android (android.graphics.Color)	4281867806 (0xFF381E1E)
YUV	37.7740, -3.8326, 15.9842
Hunter-Lab	13.6493, 6.5780, 3.1903

Details

The YUV color **37.7740, -3.8326, 15.9842** is a dark color, and the websafe version is hex **333333**. A complement of this color would be **48.2260, 3.8326, -15.9842**, and the grayscale version is **38.0000, 0.0000, 0.0000**.

A 20% lighter version of the original color is **82.9700, -4.4222, 18.4433**, and **0.0000, 0.0000, 0.0000** is the 20% darker color. If you saturate the color by 10%, you get **33.5680, -4.7170, 19.6729**, and if you desaturate by 10%, it is **41.9800, -2.9481, 12.2955**.

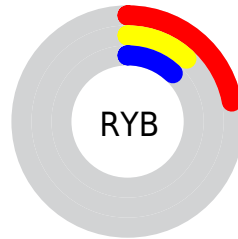
Distribution



Red (22%)

Green (12%)

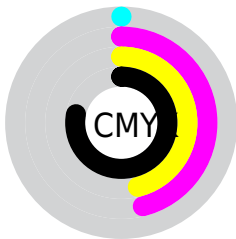
Blue (12%)



Red (22%)

Yellow (12%)

Blue (12%)

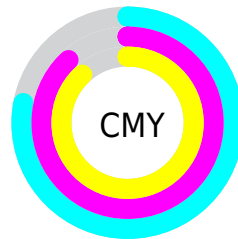


Cyan (0%)

Magenta (46%)

Yellow (46%)

Black (78%)



Cyan (78%)

Magenta (88%)

Yellow (88%)

Brightness & Saturation Gradients

These gradients show how the YUV color 37.7740, -3.8326, 15.9842 changes by changing the brightness by 10 percent. The first figure shows a shift by +10% for each color and the second figure -10%.

Similar to the brightness gradients but the following saturation gradients show a change of the YUV color 37.7740, -3.8326, 15.9842 by changing the saturation by 10% instead.

■ 37.7740, -3.8326,
15.9842

■ 37.7740, -3.8326,
15.9842

255.0000, 0.0000,
0.0000

■ 15.1440, -5.0010,
17.4137

■ 82.9700, -4.4222,
18.4433

■ 0.0000, 0.0000,
0.0000

■ 107.4540, -5.1538,
19.7728

■ 132.7530, -5.3012,
20.3876

■ 159.0520, -5.4486,
21.0024

■ 186.2370, -6.0328,
21.7172

■ 213.9490, -5.8909,

22.8467

238.0620, -3.9746,
14.8546

37.7740, -3.8326,
15.9842

37.7740, -3.8326,
15.9842

33.5680, -4.7170,
19.6729

41.9800, -2.9481,
12.2955

30.0630, -5.4541,
22.7467

45.4850, -2.2111,
9.2217

25.8570, -6.3385,
26.4354

49.6910, -1.3267,
5.5330

22.3520, -7.0755,
29.5093

53.1960, -0.5896,
2.4591

18.1460, -7.9600,
33.1980

57.4020, 0.2948,
-1.2296

■ 16.7440, -8.2548,
34.4275

■ 61.6080, 1.1793,
-4.9182

■ 65.1130, 1.9163,
-7.9921

■ 69.3190, 2.8007,
-11.6808

■ 72.8240, 3.5378,
-14.7546

Harmonies

Analogous

The Analogous color harmony consists of three colors that are next to each other on the color wheel.



38.3160, 0.8302, 13.7549



37.7740, -3.8326, 15.9842



37.1390, -7.4635, 13.9101

Triad

The Triadic color harmony groups three colors that are evenly spaced from another and form a triangle on the color wheel.



37.7740, -3.8326, 15.9842



34.3920, -4.6303, -8.2368



34.9580, 10.3737, -13.9952

Complementary

The Complementary color scheme is a pair of colors which are on the opposite of each other on the color wheel.



37.7740, -3.8326, 15.9842



48.2260, 3.8326, -15.9842

Split Complementary

Split-complementary colors differ from the complementary color scheme. The scheme consists of three colors, the original color and two neighbors of the complement color.



30.8920, 10.4062, -24.4613



37.7740, -3.8326, 15.9842



31.9330, 1.5120, -18.3582

Square

The Square scheme is like the rectangle color scheme, but the four colors are evenly spaced on the color wheel.



37.7740, -3.8326, 15.9842



35.8230, -8.2937, 0.1552



29.9690, 6.9173, -25.4058



37.2800, 8.7360, -1.9996

Rectangle

The Rectangle color scheme consists of four colors that form a rectangle on the color wheel.



37.7740, -3.8326, 15.9842



37.0630, -8.9051, 9.5917



29.9690, 6.9173, -25.4058



33.7510, 10.9688, -18.1986

Sweetspot

The Sweet Spot groups the original color and five complimentary colors.



37.7740, -3.8326, 15.9842



66.9900, -1.4741, 6.1478



40.7380, 7.5242, 13.3848



33.7940, -0.8844, 3.6887



166.0000, 0.0000, 0.0000



38.0000, 0.0000, 0.0000

Same Dimension

The Same Dimension uses a secret algorithm to generate beautiful new colors.



37.7740, -3.8326, 15.9842



45.2590, -6.0437, 25.2059



45.4050, -7.5947, 9.2918



25.8970, -0.4422, 1.8443



27.5080, -13.5614, 56.5595



65.4810, -32.2821, 134.6362

Inverse Universe

The Inverse Universe completely reimagines the original color for something new.



48.2260, 3.8326, -15.9842



61.7410, 6.0437, -25.2059



40.5950, 7.5947, -9.2918



27.1030, 0.4422, -1.8443



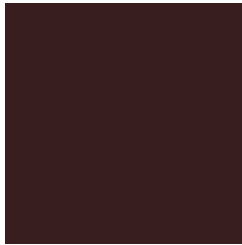
64.4920, 13.5614, -56.5595



153.5190, 32.2821, -134.6362

Previews

White Background



This preview shows how the YUV color 37.7740, -3.8326, 15.9842 looks on a white background.

Color Contrast Check

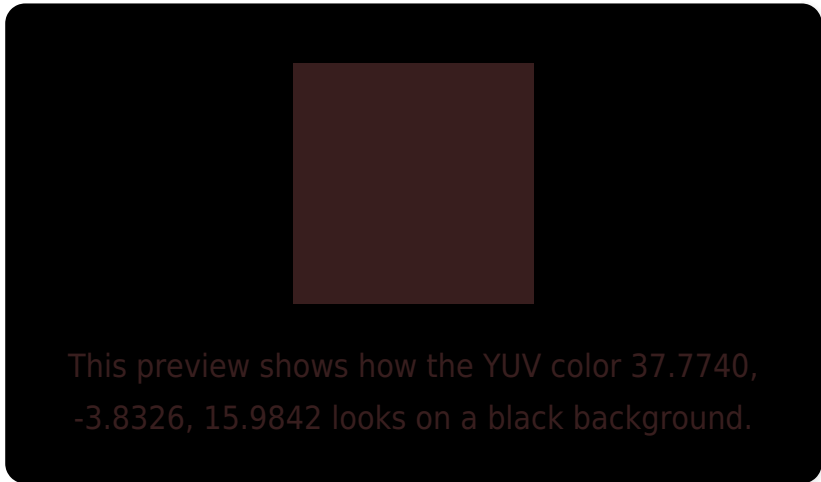
Large Text (above 18pt) WCAG AA ✓ Pass

Any Text WCAG AA ✓ Pass

Large Text (above 18pt) WCAG AAA ✓ Pass

Any Text WCAG AAA ✓ Pass

Black Background



Color Contrast Check

Large Text (above 18pt) WCAG AA × Fail

Any Text WCAG AA × Fail

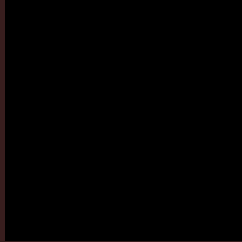
Large Text (above 18pt) WCAG AAA × Fail

Any Text WCAG AAA × Fail

If you want to check with other color combinations, try the [Color Contrast Checker](#).

YUV 37.7740, -3.8326, 15.9842

Background



This preview shows how black text looks on a background with the YUV color 37.7740, -3.8326, 15.9842.

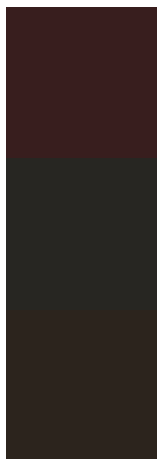


This preview shows how white text looks on a background with the YUV color 37.7740, -3.8326,

Color Blindness Simulation

Color vision deficiency is a very complex topic, and I could not describe the different causes any better than Wikipedia does, so if you want to learn more, you should check out their [article about color blindness](#).

Dichromacy



Original Color

37.7740, -3.8326, 15.9842

Protanopia

37.8430, -1.8946, 1.0147

Deuteranopia

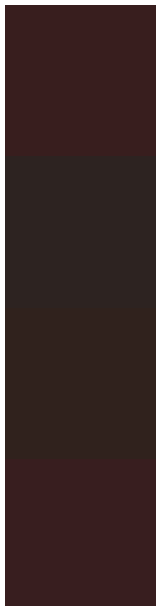
37.5940, -4.2368, 5.6181



Tritanopia

38.0020, -2.9590, 15.7842

Trichromacy



Original Color

37.7740, -3.8326, 15.9842

Protanomaly

37.7620, -2.3477, 6.3477

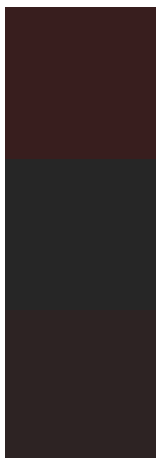
Deuteranomaly

37.6160, -4.2477, 9.1068

Tritanomaly

37.8880, -3.3958, 15.8842

Monochromacy



Original Color

37.7740, -3.8326, 15.9842

Achromatopsia

38.0000, 0.0000, 0.0000

Achromatomaly

37.9900, -1.4741, 6.1478

CSS Examples

Text

The CSS property to change the color of the text to YUV 37.7740, -3.8326, 15.9842 is called "color". The color property can be set on classes, ids or directly on the HTML element.

This example shows how text in the color `rgb(56, 30, 30)` looks like.

```
.text, #text, p{  
    color:rgb(56, 30, 30)  
}
```

If you want to add a text shadow in that color use the text-shadow property, you can generate a text shadow directly with our [CSS Text Shadow Generator](#).

Here you see how black text with a 4 pixel rgb(56, 30, 30) colored shadow looks like.

```
.shadow{ text-shadow: 4px 4px 2px rgb(56, 30, 30) }
```

Border

The CSS property to change the border of an element to YUV 37.7740, -3.8326, 15.9842 is called "border". The border property can be set on classes, ids or directly on the HTML element.

This example shows the color as border, it can be applied via the CSS property "border" or "border-color".

```
.border, #border, table{ border:4px solid rgb(56, 30, 30) }
```


If only the border color should be changed use the property `border-color`.

```
.border{ border-color:rgb(56, 30, 30) }
```

If you want to add a box shadow in that color use:

Here you see how a box with a 4 pixel `rgb(56, 30, 30)` colored shadow looks like.

```
.boxshadow{ -moz-box-shadow:4px 4px 4px  
4px rgb(56, 30, 30); -webkit-box-  
shadow:4px 4px 4px 4px rgb(56, 30, 30);  
box-shadow:4px 4px 4px 4px rgb(56, 30, 30)  
}
```

Background

The CSS property to change the background color of an element to YUV 37.7740, -3.8326, 15.9842 is called "background". The background property can be set on classes, ids or directly on the HTML element.

```
.background, #background, body{  
background: rgb(56, 30, 30) }
```

If only the background color should be changed can be used:

```
.background{ background-color: rgb(56, 30,  
30) }
```

This example shows the color as background, it is applied via the CSS property "background".

To optimize and compress your CSS code, you can use our [online CSS compressor and optimizer](#) based on csstidy. If you want to create a linear or radial gradient as background or border, check our [CSS Gradient Generator](#).

Hey! You found this booklet interesting? Support Converting Colors with the new Membership Option!

The pro membership hides all ads, plus gives you double the colors in the color bucket, and more awesome pro features!

[Learn more, Memberships starting at \\$2.50/m!](#)

**Follow me
on Twitter!**

@ConvertingColor