

Converting Colors

YUV(37.9600, -5.8963, 24.5911)

Have a look what the booklet for
YUV(37.9600, -5.8963, 24.5911)
contains.

YUV(37.9600, -5.8963, 24.5911)	3
<i>Conversions</i>	4
<i>Details</i>	6
<i>Harmonies</i>	12
<i>Previews</i>	24
<i>Color Blindness Simulation</i>	28
<i>CSS Examples</i>	31

Color

**YUV(37.9600, -5.8963,
24.5911)**

Conversions

Conversions Part 1

Format	Color
Hex	421A1A
RGB	66, 26, 26
RGB Percent	26%, 10%, 10%
CMY	0.7412, 0.8980, 0.8980
CMYK	0.00, 0.61, 0.61, 0.74
HSL	0°, 43%, 18%
HSV	0°, 61%, 26%
XYZ	2.8026, 1.9716, 1.2101
YIQ	37.9600, 23.8400, 8.4800

Conversions

Conversions Part 2

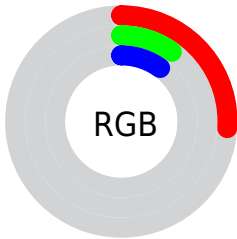
Format	Color
R_{YB}	66, 26, 26
Decimal	4332058
CIE Lab	15.34, 19.39, 9.40
CIE LCh	15, 21.551, 25.853
Yxy	1.9716, 0.4683, 0.3295
Android (android.graphics.Color)	4282522138 (0xFF421A1A)
YUV	37.9600, -5.8963, 24.5911
Hunter-Lab	14.0414, 11.0553, 4.7192

Details

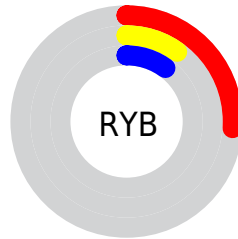
The YUV color **37.9600, -5.8963, 24.5911** is a dark color, and the websafe version is hex **330000**. A complement of this color would be **54.0400, 5.8963, -24.5911**, and the grayscale version is **38.0000, 0.0000, 0.0000**.

A 20% lighter version of the original color is **84.5260, -7.6543, 28.4797**, and **0.0000, 0.0000, 0.0000** is the 20% darker color. If you saturate the color by 10%, you get **33.0530, -6.9281, 28.8945**, and if you desaturate by 10%, it is **42.8670, -4.8644, 20.2876**.

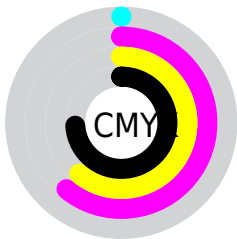
Distribution



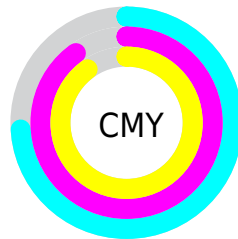
- Red (26%)
- Green (10%)
- Blue (10%)



- Red (26%)
- Yellow (10%)
- Blue (10%)



- Cyan (0%)
- Magenta (61%)
- Yellow (61%)
- Black (74%)



- Cyan (74%)
- Magenta (90%)
- Yellow (90%)

Brightness & Saturation Gradients

These gradients show how the YUV color 37.9600, -5.8963, 24.5911 changes by changing the brightness by 10 percent. The first figure shows a shift by +10% for each color and the second figure -10%.

Similar to the brightness gradients but the following saturation gradients show a change of the YUV color 37.9600, -5.8963, 24.5911 by changing the saturation by 10% instead.

■ 37.9600, -5.8963,
24.5911

■ 37.9600, -5.8963,
24.5911

■ 254.7720, -0.8736,
0.2000

■ 14.9170, -7.3541,
25.5058

■ 84.5260, -7.6543,
28.4797

■ 0.0000, 0.0000,
0.0000

■ 109.0100, -8.3859,
29.8092

■ 134.6080, -8.6807,
31.0388

■ 161.2060, -8.9756,
32.2683

■ 188.1030, -9.4178,
34.1127

■ 215.9890, -9.8546,

34.2126

■ 235.6170, -5.7272,
16.9989

■ 37.9600, -5.8963,
24.5911

■ 37.9600, -5.8963,
24.5911

■ 33.0530, -6.9281,
28.8945

■ 42.8670, -4.8644,
20.2876

■ 28.8470, -7.8126,
32.5832

■ 47.0730, -3.9800,
16.5990

■ 23.9400, -8.8444,
36.8866

■ 51.9800, -2.9481,
12.2955

■ 19.7340, -9.7289,
40.5753

■ 56.1860, -2.0637,
8.6069

■ 61.0930, -1.0318,
4.3034

■ 66.0000, 0.0000,
0.0000

■ 70.2060, 0.8844,
-3.6887

■ 75.1130, 1.9163,
-7.9921

■ 79.3190, 2.8007,
-11.6808

Harmonies

Analogous

The Analogous color harmony consists of three colors that are next to each other on the color wheel.



38.7840, 1.0925, 22.9914



37.9600, -5.8963, 24.5911



37.5050, -12.5740, 19.7281

Triad

The Triadic color harmony groups three colors that are evenly spaced from another and form a triangle on the color wheel.



37.9600, -5.8963, 24.5911



32.4080, -5.6241, -16.1438



31.9330, 18.2740, -28.0052

Complementary

The Complementary color scheme is a pair of colors which are on the opposite of each other on the color wheel.



37.9600, -5.8963, 24.5911



54.0400, 5.8963, -24.5911

Split Complementary

Split-complementary colors differ from the complementary color scheme. The scheme consists of three colors, the original color and two neighbors of the complement color.



33.0100, 14.7851, -28.9498



37.9600, -5.8963, 24.5911



31.1060, 2.4127, -27.2800

Square

The Square scheme is like the rectangle color scheme, but the four colors are evenly spaced on the color wheel.



37.9600, -5.8963, 24.5911



35.0310, -13.8193, -0.9042



32.8160, 8.9647, -28.7796



38.5340, 13.5407, -3.0993

Rectangle

The Rectangle color scheme consists of four colors that form a rectangle on the color wheel.



37.9600, -5.8963, 24.5911



36.8480, -16.1941, 14.1653



32.8160, 8.9647, -28.7796



32.4060, 17.5478, -28.4201

Sweetspot

The Sweet Spot groups the original color and five complimentary colors.



37.9600, -5.8963, 24.5911



75.7840, -2.3585, 9.8364



42.5200, 11.5756, 20.5920



36.6910, -1.3267, 5.5330



171.0000, 0.0000, 0.0000



43.0000, 0.0000, 0.0000

Same Dimension

The Same Dimension uses a secret algorithm to generate beautiful new colors.



37.9600, -5.8963, 24.5911



42.1360, -9.4340, 39.3457



49.7000, -11.6841, 14.2951



30.8970, -0.4422, 1.8443



29.0030, -14.2985, 59.6334



66.9760, -33.0192, 137.7100

Inverse Universe

The Inverse Universe completely reimagines the original color for something new.



54.0400, 5.8963, -24.5911



67.8640, 9.4340, -39.3457



42.3000, 11.6841, -14.2951



32.1030, 0.4422, -1.8443



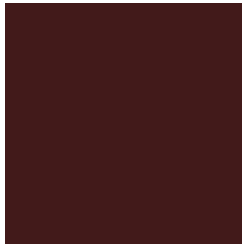
67.9970, 14.2985, -59.6334



157.0240, 33.0192, -137.7100

Previews

White Background



This preview shows how the YUV color 37.9600, -5.8963, 24.5911 looks on a white background.

Color Contrast Check

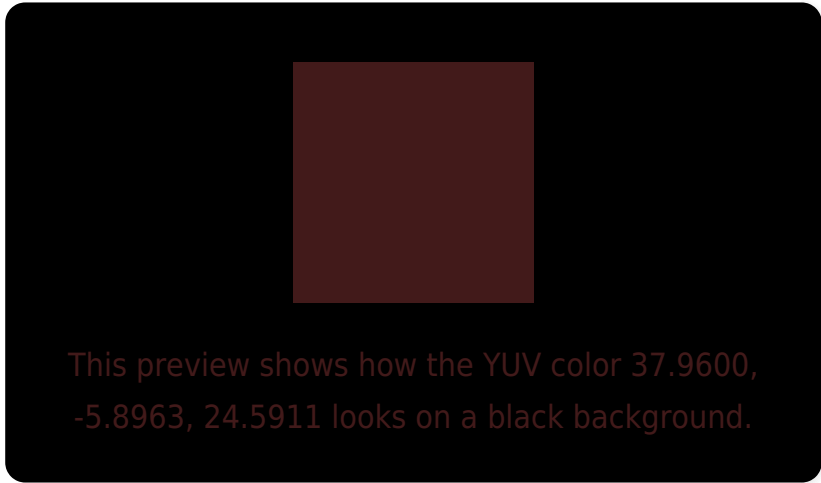
Large Text (above 18pt) WCAG AA ✓ Pass

Any Text WCAG AA ✓ Pass

Large Text (above 18pt) WCAG AAA ✓ Pass

Any Text WCAG AAA ✓ Pass

Black Background



Color Contrast Check

Large Text (above 18pt) WCAG AA × Fail

Any Text WCAG AA × Fail

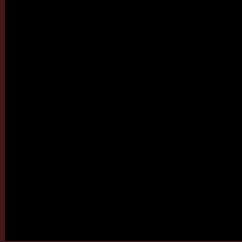
Large Text (above 18pt) WCAG AAA × Fail

Any Text WCAG AAA × Fail

If you want to check with other color combinations, try the [Color Contrast Checker](#).

YUV 37.9600, -5.8963, 24.5911

Background



This preview shows how black text looks on a background with the YUV color 37.9600, -5.8963, 24.5911.



This preview shows how white text looks on a background with the YUV color 37.9600, -5.8963,

Color Blindness Simulation

Color vision deficiency is a very complex topic, and I could not describe the different causes any better than Wikipedia does, so if you want to learn more, you should check out their [article about color blindness](#).

Dichromacy



Original Color

37.9600, -5.8963, 24.5911

Protanopia

39.0990, -3.4998, 2.5442

Deuteranopia

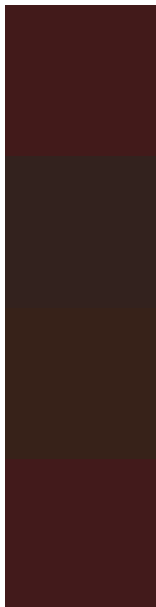
39.3940, -7.5892, 7.5475



Tritanopia

38.0740, -5.4595, 24.4911

Trichromacy



Original Color

37.9600, -5.8963, 24.5911

Protanomaly

38.6270, -4.2531, 10.8511

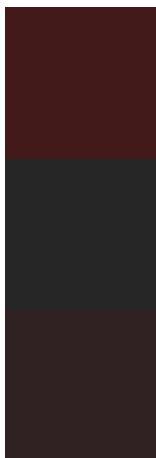
Deuteranomaly

39.2530, -7.0267, 13.8101

Tritanomaly

38.0740, -5.4595, 24.4911

Monochromacy



Original Color

37.9600, -5.8963, 24.5911

Achromatopsia

38.0000, 0.0000, 0.0000

Achromatomaly

38.1860, -2.0637, 8.6069

CSS Examples

Text

The CSS property to change the color of the text to YUV 37.9600, -5.8963, 24.5911 is called "color". The color property can be set on classes, ids or directly on the HTML element.

This example shows how text in the color `rgb(66, 26, 26)` looks like.

```
.text, #text, p{  
    color:rgb(66, 26, 26)  
}
```

If you want to add a text shadow in that color use the text-shadow property, you can generate a text shadow directly with our [CSS Text Shadow Generator](#).

Here you see how black text with a 4 pixel rgb(66, 26, 26) colored shadow looks like.

```
.shadow{ text-shadow: 4px 4px 2px rgb(66, 26, 26) }
```

Border

The CSS property to change the border of an element to YUV 37.9600, -5.8963, 24.5911 is called "border". The border property can be set on classes, ids or directly on the HTML element.

This example shows the color as border, it can be applied via the CSS property "border" or "border-color".

```
.border, #border, table{ border:4px solid rgb(66, 26, 26) }
```


If only the border color should be changed use the property border-color.

```
.border{ border-color:rgb(66, 26, 26) }
```

If you want to add a box shadow in that color use:

Here you see how a box with a 4 pixel rgb(66, 26, 26) colored shadow looks like.

```
.boxshadow{ -moz-box-shadow:4px 4px 4px  
4px rgb(66, 26, 26); -webkit-box-  
shadow:4px 4px 4px 4px rgb(66, 26, 26);  
box-shadow:4px 4px 4px 4px rgb(66, 26, 26)  
}
```

Background

The CSS property to change the background color of an element to YUV 37.9600, -5.8963, 24.5911 is called "background". The background property can be set on classes, ids or directly on the HTML element.

```
.background, #background, body{  
background: rgb(66, 26, 26) }
```

If only the background color should be changed can be used:

```
.background{ background-color: rgb(66, 26,  
26) }
```

This example shows the color as background, it is applied via the CSS property "background".

To optimize and compress your CSS code, you can use our [online CSS compressor and optimizer](#) based on csstidy. If you want to create a linear or radial gradient as background or border, check our [CSS Gradient Generator](#).

Hey! You found this booklet interesting? Support Converting Colors with the new Membership Option!

The pro membership hides all ads, plus gives you double the colors in the color bucket, and more awesome pro features!

[Learn more, Memberships starting at \\$2.50/m!](#)

**Follow me
on Twitter!**

@ConvertingColor