

Converting Colors

YUV(38.5910, -9.6584, 17.8987)

Have a look what the booklet for
YUV(38.5910, -9.6584, 17.8987)
contains.

YUV(38.5910, -9.6584, 17.8987)	3
<i>Conversions</i>	4
<i>Details</i>	6
<i>Harmonies</i>	12
<i>Previews</i>	24
<i>Color Blindness Simulation</i>	28
<i>CSS Examples</i>	31

Color

**YUV(38.5910, -9.6584,
17.8987)**

Conversions

Conversions Part 1

Format	Color
Hex	3B2013
RGB	59, 32, 19
RGB Percent	23%, 13%, 7%
CMY	0.7686, 0.8745, 0.9255
CMYK	0.00, 0.46, 0.68, 0.77
HSL	20°, 51%, 15%
HSV	20°, 68%, 23%
XYZ	2.4377, 2.0098, 0.8756
YIQ	38.5910, 20.2650, 1.6810

Conversions

Conversions Part 2

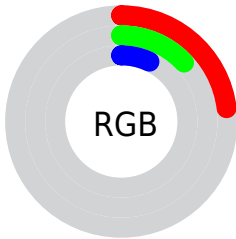
Format	Color
RYB	59, 38, 19
Decimal	3874835
CIELab	15.54, 11.51, 14.27
CIELCh	16, 18.331, 51.110
Yxy	2.0098, 0.4579, 0.3776
Android (android.graphics.Color)	4282064915 (0xFF3B2013)
YUV	38.5910, -9.6584, 17.8987
Hunter-Lab	14.1769, 5.8831, 6.2621

Details

The YUV color **38.5910, -9.6584, 17.8987** is a dark color, and the websafe version is hex **330000**. A complement of this color would be **39.4090, 9.6584, -17.8987**, and the grayscale version is **39.0000, 0.0000, 0.0000**.

A 20% lighter version of the original color is **83.8580, -11.2690, 21.1725**, and **0.0000, 0.0000, 0.0000** is the 20% darker color. If you saturate the color by 10%, you get **35.5590, -11.1216, 20.5578**, and if you desaturate by 10%, it is **41.6230, -8.1951, 15.2396**.

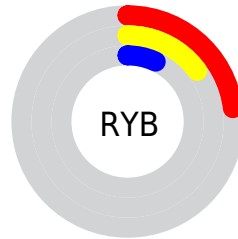
Distribution



 Red (23%)

 Green (13%)

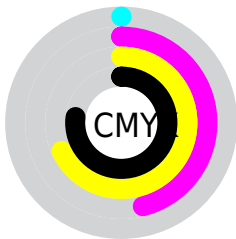
 Blue (7%)



 Red (23%)

 Yellow (15%)

 Blue (7%)

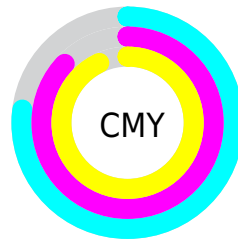


 Cyan (0%)

 Magenta (46%)

 Yellow (68%)

 Black (77%)



 Cyan (77%)

 Magenta (87%)

 Yellow (93%)

Brightness & Saturation Gradients

These gradients show how the YUV color 38.5910, -9.6584, 17.8987 changes by changing the brightness by 10 percent. The first figure shows a shift by +10% for each color and the second figure -10%.

Similar to the brightness gradients but the following saturation gradients show a change of the YUV color 38.5910, -9.6584, 17.8987 by changing the saturation by 10% instead.

■ 38.5910, -9.6584,
17.8987

■ 38.5910, -9.6584,
17.8987

■ 253.7460, -4.8048,
1.0998

■ 16.9330, -8.3480,
17.5988

■ 83.8580, -11.2690,
21.1725

■ 0.0000, 0.0000,
0.0000

■ 108.4560,
-11.5638, 22.4021

■ 133.9400,
-12.2954, 23.7316

■ 160.4240,
-13.0270, 25.0612

■ 187.6090,
-13.6112, 25.7759

■ 215.7940,

-14.1954, 26.4907

■ 238.1130,
-11.3947, 14.8099

■ 38.5910, -9.6584,
17.8987

■ 38.5910, -9.6584,
17.8987

■ 35.5590, -11.1216,
20.5578

■ 41.6230, -8.1951,
15.2396

■ 32.5270, -12.5848,
23.2168

■ 44.6550, -6.7319,
12.5806

■ 29.4950, -14.0480,
25.8759

■ 47.6870, -5.2687,
9.9215

■ 28.7940, -14.1954,
26.4907

■ 50.7190, -3.8055,
7.2624

■ 53.7510, -2.3422,
4.6034

■ 56.6690, -1.3158,
2.0443

■ 59.7010, 0.1474,
-0.6148

■ 62.7330, 1.6106,
-3.2738

■ 65.7650, 3.0739,
-5.9329

Harmonies

Analogous

The Analogous color harmony consists of three colors that are next to each other on the color wheel.



38.6930, -4.2856, 21.3172



38.5910, -9.6584, 17.8987



37.9230, -13.2730, 10.5915

Triad

The Triadic color harmony groups three colors that are evenly spaced from another and form a triangle on the color wheel.



38.5910, -9.6584, 17.8987



30.2910, 1.8285, -26.5652



39.0670, 11.7990, -4.4438

Complementary

The Complementary color scheme is a pair of colors which are on the opposite of each other on the color wheel.



38.5910, -9.6584, 17.8987



39.4090, 9.6584, -17.8987

Split Complementary

Split-complementary colors differ from the complementary color scheme. The scheme consists of three colors, the original color and two neighbors of the complement color.



32.8580, 15.3530, -24.4315



38.5910, -9.6584, 17.8987



31.8870, 7.9437, -27.9649

Square

The Square scheme is like the rectangle color scheme, but the four colors are evenly spaced on the color wheel.



38.5910, -9.6584, 17.8987



34.9140, -6.3666, -11.3256



32.5540, 13.0379, -28.5499



40.3030, 7.2456, 9.3813

Rectangle

The Rectangle color scheme consists of four colors that form a rectangle on the color wheel.



38.5910, -9.6584, 17.8987



37.2920, -12.9620, 4.1289



32.5540, 13.0379, -28.5499



37.9630, 12.8362, -10.4916

Sweetspot

The Sweet Spot groups the original color and five complimentary colors.



38.5910, -9.6584, 17.8987



68.7190, -3.8055, 7.2624



34.0380, 5.8973, 21.8917



33.4520, -2.1948, 3.9886



166.0000, 0.0000, 0.0000



38.0000, 0.0000, 0.0000

Same Dimension

The Same Dimension uses a secret algorithm to generate beautiful new colors.



38.5910, -9.6584, 17.8987



45.2780, -14.9271, 27.8202



50.3310, -15.4462, 7.6027



29.4840, -0.7316, 1.3295



46.3030, -22.8274, 41.8303



108.6420, -53.5605, 99.4150

Inverse Universe

The Inverse Universe completely reimagines the original color for something new.



39.4090, 9.6584, -17.8987



46.1350, 15.2164, -27.3054



27.6690, 15.4462, -7.6027



29.5160, 0.7316, -1.3295



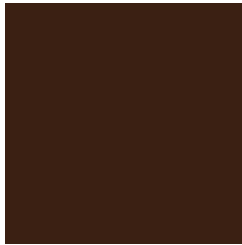
48.2840, 22.5380, -42.3451



113.3580, 53.5605, -99.4150

Previews

White Background



This preview shows how the YUV color 38.5910, -9.6584, 17.8987 looks on a white background.

Color Contrast Check

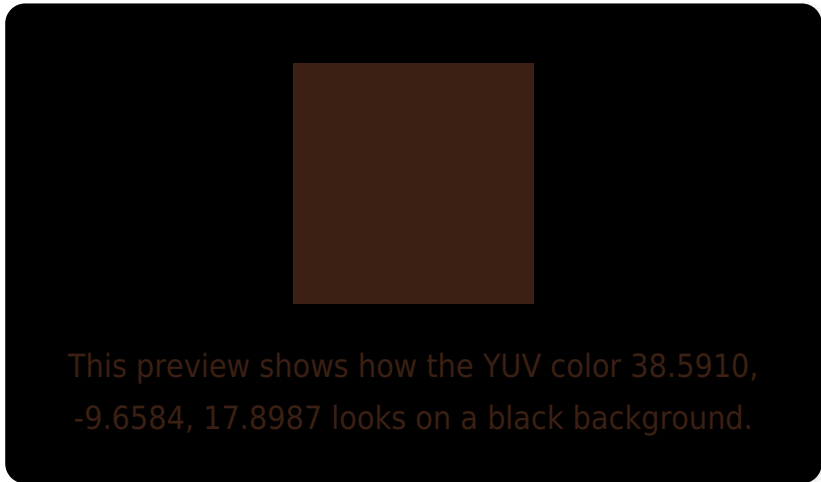
Large Text (above 18pt) WCAG AA ✓ Pass

Any Text WCAG AA ✓ Pass

Large Text (above 18pt) WCAG AAA ✓ Pass

Any Text WCAG AAA ✓ Pass

Black Background



Color Contrast Check

Large Text (above 18pt) WCAG AA × Fail

Any Text WCAG AA × Fail

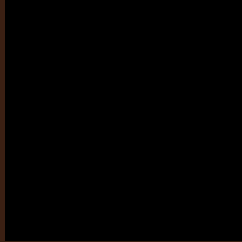
Large Text (above 18pt) WCAG AAA × Fail

Any Text WCAG AAA × Fail

If you want to check with other color combinations, try the [Color Contrast Checker](#).

YUV 38.5910, -9.6584, 17.8987

Background



This preview shows how black text looks on a background with the YUV color 38.5910, -9.6584, 17.8987.

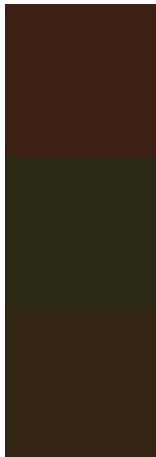


This preview shows how white text looks on a background with the YUV color 38.5910, -9.6584,

Color Blindness Simulation

Color vision deficiency is a very complex topic, and I could not describe the different causes any better than Wikipedia does, so if you want to learn more, you should check out their [article about color blindness](#).

Dichromacy



Original Color

38.5910, -9.6584, 17.8987

Protanopia

38.1440, -8.4520, 4.2587

Deuteranopia

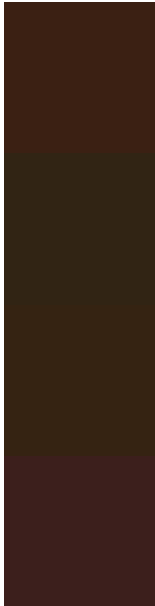
38.4220, -10.0680, 9.2769



Tritanopia

39.3120, -3.1118, 18.1434

Trichromacy



Original Color

38.5910, -9.6584, 17.8987

Protanomaly

38.0630, -8.9051, 9.5917

Deuteranomaly

38.4440, -10.0789, 12.7656

Tritanomaly

39.3290, -5.5852, 18.1285

Monochromacy



Original Color

38.5910, -9.6584, 17.8987

Achromatopsia

39.0000, 0.0000, 0.0000

Achromatomaly

38.5340, -3.2213, 6.5477

CSS Examples

Text

The CSS property to change the color of the text to YUV 38.5910, -9.6584, 17.8987 is called "color". The color property can be set on classes, ids or directly on the HTML element.

This example shows how text in the color `rgb(59, 32, 19)` looks like.

```
.text, #text, p{  
    color:rgb(59, 32, 19)  
}
```

If you want to add a text shadow in that color use the text-shadow property, you can generate a text shadow directly with our [CSS Text Shadow Generator](#).

Here you see how black text with a 4 pixel rgb(59, 32, 19) colored shadow looks like.

```
.shadow{ text-shadow: 4px 4px 2px rgb(59, 32, 19) }
```

Border

The CSS property to change the border of an element to YUV 38.5910, -9.6584, 17.8987 is called "border". The border property can be set on classes, ids or directly on the HTML element.

This example shows the color as border, it can be applied via the CSS property "border" or "border-color".

```
.border, #border, table{ border:4px solid rgb(59, 32, 19) }
```


If only the border color should be changed use the property `border-color`.

```
.border{ border-color:rgb(59, 32, 19) }
```

If you want to add a box shadow in that color use:

Here you see how a box with a 4 pixel `rgb(59, 32, 19)` colored shadow looks like.

```
.boxshadow{ -moz-box-shadow:4px 4px 4px  
4px rgb(59, 32, 19); -webkit-box-  
shadow:4px 4px 4px 4px rgb(59, 32, 19);  
box-shadow:4px 4px 4px 4px rgb(59, 32, 19)  
}
```

Background

The CSS property to change the background color of an element to YUV 38.5910, -9.6584, 17.8987 is called "background". The background property can be set on classes, ids or directly on the HTML element.

```
.background, #background, body{  
background: rgb(59, 32, 19) }
```

If only the background color should be changed can be used:

```
.background{ background-color: rgb(59, 32,  
19) }
```

This example shows the color as background, it is applied via the CSS property "background".

To optimize and compress your CSS code, you can use our [online CSS compressor and optimizer](#) based on csstidy. If you want to create a linear or radial gradient as background or border, check our [CSS Gradient Generator](#).

Hey! You found this booklet
interesting? Support Converting
Colors with the new Membership
Option!

The pro membership hides all ads, plus gives you
double the colors in the color bucket, and more
awesome pro features!

[Learn more, Memberships starting at \\$2.50/m!](#)

**Follow me
on Twitter!**

@ConvertingColor