

Converting Colors

YUV(39.4440, -6.6279, 25.9206)

Have a look what the booklet for
YUV(39.4440, -6.6279, 25.9206)
contains.

YUV(39.4440, -6.6279, 25.9206)	3
<i>Conversions</i>	4
<i>Details</i>	6
<i>Harmonies</i>	12
<i>Previews</i>	24
<i>Color Blindness Simulation</i>	28
<i>CSS Examples</i>	31

Color

**YUV(39.4440, -6.6279,
25.9206)**

Conversions

Conversions Part 1

Format	Color
Hex	451B1A
RGB	69, 27, 26
RGB Percent	27%, 11%, 10%
CMY	0.7294, 0.8941, 0.8980
CMYK	0.00, 0.61, 0.62, 0.73
HSL	1°, 45%, 19%
HSV	1°, 62%, 27%
XYZ	3.0326, 2.1237, 1.2274
YIQ	39.4440, 25.3530, 8.5930

Conversions

Conversions Part 2

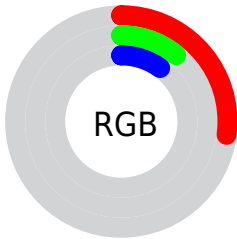
Format	Color
R_{YB}	69, 27, 26
Decimal	4528922
CIE Lab	16.12, 20.12, 10.54
CIE LCh	16, 22.717, 27.647
Yxy	2.1237, 0.4751, 0.3327
Android (android.graphics.Color)	4282719002 (0xFF451B1A)
YUV	39.4440, -6.6279, 25.9206
Hunter-Lab	14.5728, 11.6439, 5.2074

Details

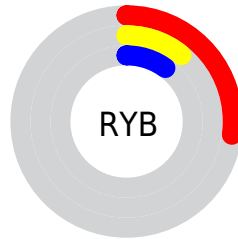
The YUV color **39.4440, -6.6279, 25.9206** is a dark color, and the websafe version is hex **330000**. A complement of this color would be **55.5560, 6.6279, -25.9206**, and the grayscale version is **39.0000, 0.0000, 0.0000**.

A 20% lighter version of the original color is **86.0100, -8.3859, 29.8092**, and **2.6910, -1.3267, 5.5330** is the 20% darker color. If you saturate the color by 10%, you get **34.5370, -7.6597, 30.2241**, and if you desaturate by 10%, it is **44.3510, -5.5960, 21.6172**.

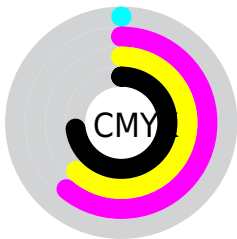
Distribution



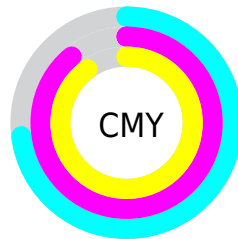
- Red (27%)
- Green (11%)
- Blue (10%)



- Red (27%)
- Yellow (11%)
- Blue (10%)



- Cyan (0%)
- Magenta (61%)
- Yellow (62%)
- Black (73%)



- Cyan (73%)
- Magenta (89%)
- Yellow (90%)

Brightness & Saturation Gradients

These gradients show how the YUV color 39.4440, -6.6279, 25.9206 changes by changing the brightness by 10 percent. The first figure shows a shift by +10% for each color and the second figure -10%.

Similar to the brightness gradients but the following saturation gradients show a change of the YUV color 39.4440, -6.6279, 25.9206 by changing the saturation by 10% instead.

■ 39.4440, -6.6279,
25.9206

■ 39.4440, -6.6279,
25.9206

■ 254.7720, -0.8736,
0.2000

■ 16.6890, -8.2277,
25.7057

■ 86.0100, -8.3859,
29.8092

■ 2.6910, -1.3267,
5.5330

■ 110.9070, -8.8282,
31.6536

■ 0.0000, 0.0000,
0.0000

■ 136.3910, -9.5598,
32.9831

■ 162.9890, -9.8546,
34.2126

■ 190.4730,
-10.5862, 35.5422

■ 216.5760,

-10.1440, 33.6978

236.7910, -6.3060,
15.9693

39.4440, -6.6279,
25.9206

39.4440, -6.6279,
25.9206

34.5370, -7.6597,
30.2241

44.3510, -5.5960,
21.6172

30.2170, -8.9810,
34.0127

48.6710, -4.2748,
17.8285

25.3100, -10.0128,
38.3161

53.5780, -3.2430,
13.5251

21.8050, -10.7499,
41.3900

58.4850, -2.2111,
9.2217

63.3920, -1.1793,
4.9182

■ 67.5980, -0.2948,
1.2296

■ 72.5050, 0.7370,
-3.0739

■ 77.4120, 1.7689,
-7.3773

■ 82.3190, 2.8007,
-11.6808

Harmonies

Analogous

The Analogous color harmony consists of three colors that are next to each other on the color wheel.



39.7950, 1.0871, 24.7358



39.4440, -6.6279, 25.9206



39.1630, -13.8844, 20.0280

Triad

The Triadic color harmony groups three colors that are evenly spaced from another and form a triangle on the color wheel.



39.4440, -6.6279, 25.9206



33.0980, -5.4713, -18.5029



32.8620, 19.2950, -28.8200

Complementary

The Complementary color scheme is a pair of colors which are on the opposite of each other on the color wheel.



39.4440, -6.6279, 25.9206



55.5560, 6.6279, -25.9206

Split Complementary

Split-complementary colors differ from the complementary color scheme. The scheme consists of three colors, the original color and two neighbors of the complement color.



34.6400, 15.9535, -30.3793



39.4440, -6.6279, 25.9206



32.5080, 2.7076, -28.5095

Square

The Square scheme is like the rectangle color scheme, but the four colors are evenly spaced on the color wheel.



39.4440, -6.6279, 25.9206



36.2050, -14.3981, -1.9338



34.4460, 10.1331, -30.2091



40.3600, 14.1195, -2.0697

Rectangle

The Rectangle color scheme consists of four colors that form a rectangle on the color wheel.



39.4440, -6.6279, 25.9206



38.5060, -17.5045, 14.4652



34.4460, 10.1331, -30.2091



33.9220, 18.2795, -29.7496

Sweetspot

The Sweet Spot groups the original color and five complimentary colors.



39.4440, -6.6279, 25.9206



77.6700, -2.7953, 9.9364



43.6450, 12.0070, 22.2363



38.8760, -1.9109, 6.2477



173.0000, 0.0000, 0.0000



46.0000, 0.0000, 0.0000

Same Dimension

The Same Dimension uses a secret algorithm to generate beautiful new colors.



39.4440, -6.6279, 25.9206



43.2070, -10.4551, 40.1605



51.7710, -12.7051, 15.1098



33.1960, -0.5896, 2.4591



30.7750, -15.1721, 59.8333



70.8080, -34.9083, 136.9804

Inverse Universe

The Inverse Universe completely reimagines the original color for something new.



55.5560, 6.6279, -25.9206



68.3800, 10.1657, -40.6753



43.2290, 12.7051, -15.1098



34.8040, 0.5896, -2.4591



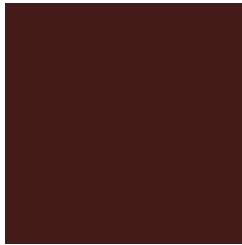
68.2250, 15.1721, -59.8333



156.1920, 34.9083, -136.9804

Previews

White Background



This preview shows how the YUV color 39.4440, -6.6279, 25.9206 looks on a white background.

Color Contrast Check

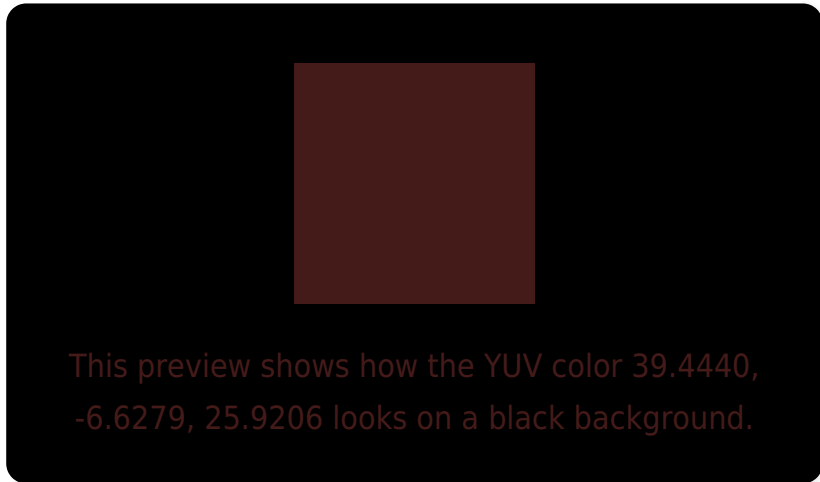
Large Text (above 18pt) WCAG AA ✓ Pass

Any Text WCAG AA ✓ Pass

Large Text (above 18pt) WCAG AAA ✓ Pass

Any Text WCAG AAA ✓ Pass

Black Background



Color Contrast Check

Large Text (above 18pt) WCAG AA × Fail

Any Text WCAG AA × Fail

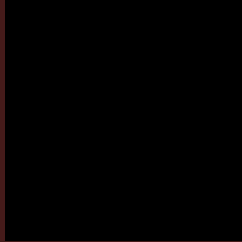
Large Text (above 18pt) WCAG AAA × Fail

Any Text WCAG AAA × Fail

If you want to check with other color combinations, try the [Color Contrast Checker](#).

YUV 39.4440, -6.6279, 25.9206

Background



This preview shows how black text looks on a background with the YUV color 39.4440, -6.6279, 25.9206.



This preview shows how white text looks on a background with the YUV color 39.4440, -6.6279,

Color Blindness Simulation

Color vision deficiency is a very complex topic, and I could not describe the different causes any better than Wikipedia does, so if you want to learn more, you should check out their [article about color blindness](#).

Dichromacy



Original Color

39.4440, -6.6279, 25.9206

Protanopia

40.8710, -4.3734, 2.7441

Deuteranopia

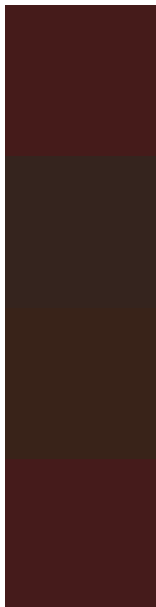
40.5790, -8.1734, 8.2622



Tritanopia

39.6720, -5.7543, 25.7207

Trichromacy



Original Color

39.4440, -6.6279, 25.9206

Protanomaly

40.3990, -5.1267, 11.0511

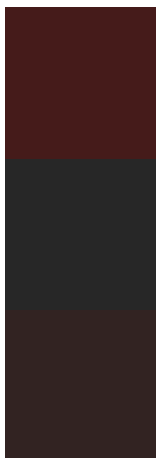
Deuteranomaly

40.4380, -7.6109, 14.5249

Tritanomaly

39.5580, -6.1911, 25.8206

Monochromacy



Original Color

39.4440, -6.6279, 25.9206

Achromatopsia

39.0000, 0.0000, 0.0000

Achromatomaly

39.3710, -2.6479, 9.3216

CSS Examples

Text

The CSS property to change the color of the text to YUV 39.4440, -6.6279, 25.9206 is called "color". The color property can be set on classes, ids or directly on the HTML element.

This example shows how text in the color `rgb(69, 27, 26)` looks like.

```
.text, #text, p{  
    color:rgb(69, 27, 26)  
}
```

If you want to add a text shadow in that color use the text-shadow property, you can generate a text shadow directly with our [CSS Text Shadow Generator](#).

Here you see how black text with a 4 pixel rgb(69, 27, 26) colored shadow looks like.

```
.shadow{ text-shadow: 4px 4px 2px rgb(69, 27, 26) }
```

Border

The CSS property to change the border of an element to YUV 39.4440, -6.6279, 25.9206 is called "border". The border property can be set on classes, ids or directly on the HTML element.

This example shows the color as border, it can be applied via the CSS property "border" or "border-color".

```
.border, #border, table{ border:4px solid rgb(69, 27, 26) }
```


If only the border color should be changed use the property `border-color`.

```
.border{ border-color:rgb(69, 27, 26) }
```

If you want to add a box shadow in that color use:

Here you see how a box with a 4 pixel `rgb(69, 27, 26)` colored shadow looks like.

```
.boxshadow{ -moz-box-shadow:4px 4px 4px  
4px rgb(69, 27, 26); -webkit-box-  
shadow:4px 4px 4px 4px rgb(69, 27, 26);  
box-shadow:4px 4px 4px 4px rgb(69, 27, 26)  
}
```

Background

The CSS property to change the background color of an element to YUV 39.4440, -6.6279, 25.9206 is called "background". The background property can be set on classes, ids or directly on the HTML element.

```
.background, #background, body{  
background: rgb(69, 27, 26) }
```

If only the background color should be changed can be used:

```
.background{ background-color: rgb(69, 27,  
26) }
```

This example shows the color as background, it is applied via the CSS property "background".

To optimize and compress your CSS code, you can use our [online CSS compressor and optimizer](#) based on csstidy. If you want to create a linear or radial gradient as background or border, check our [CSS Gradient Generator](#).

Hey! You found this booklet interesting? Support Converting Colors with the new Membership Option!

The pro membership hides all ads, plus gives you double the colors in the color bucket, and more awesome pro features!

[Learn more, Memberships starting at \\$2.50/m!](#)

**Follow me
on Twitter!**

@ConvertingColor