

Converting Colors

YUV(39.7110, -8.2385, 29.1945)

Have a look what the booklet for
YUV(39.7110, -8.2385, 29.1945)
contains.

YUV(39.7110, -8.2385, 29.1945)	3
<i>Conversions</i>	4
<i>Details</i>	6
<i>Harmonies</i>	12
<i>Previews</i>	24
<i>Color Blindness Simulation</i>	28
<i>CSS Examples</i>	31

Color

**YUV(39.7110, -8.2385,
29.1945)**

Conversions

Conversions Part 1

Format	Color
Hex	491A17
RGB	73, 26, 23
RGB Percent	29%, 10%, 9%
CMY	0.7137, 0.8980, 0.9098
CMYK	0.00, 0.64, 0.68, 0.71
HSL	4°, 52%, 19%
HSV	4°, 68%, 29%
XYZ	3.2717, 2.2171, 1.0661
YIQ	39.7110, 28.9750, 9.0310

Conversions

Conversions Part 2

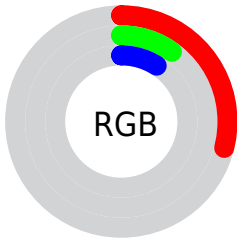
Format	Color
RYB	73, 26, 23
Decimal	4790807
CIELab	16.59, 22.18, 13.40
CIElCh	17, 25.916, 31.132
Yxy	2.2171, 0.4991, 0.3382
Android (android.graphics.Color)	4282980887 (0xFF491A17)
YUV	39.7110, -8.2385, 29.1945
Hunter-Lab	14.8900, 13.1634, 6.1778

Details

The YUV color **39.7110, -8.2385, 29.1945** is a dark color, and the websafe version is hex **330000**. A complement of this color would be **56.2890, 8.2385, -29.1945**, and the grayscale version is **40.0000, 0.0000, 0.0000**.

A 20% lighter version of the original color is **86.5760, -10.1440, 33.6978**, and **5.3820, -2.6533, 11.0660** is the 20% darker color. If you saturate the color by 10%, you get **34.8040, -9.2704, 33.4979**, and if you desaturate by 10%, it is **44.6180, -7.2067, 24.8910**.

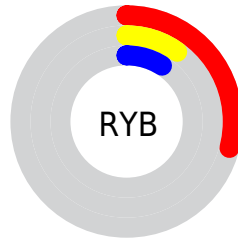
Distribution



Red (29%)

Green (10%)

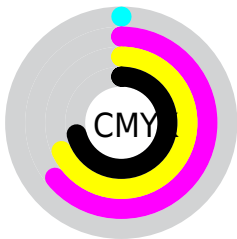
Blue (9%)



Red (29%)

Yellow (10%)

Blue (9%)

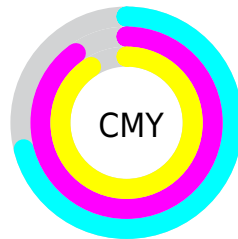


Cyan (0%)

Magenta (64%)

Yellow (68%)

Black (71%)



Cyan (71%)

Magenta (90%)

Yellow (91%)

Brightness & Saturation Gradients

These gradients show how the YUV color 39.7110, -8.2385, 29.1945 changes by changing the brightness by 10 percent. The first figure shows a shift by +10% for each color and the second figure -10%.

Similar to the brightness gradients but the following saturation gradients show a change of the YUV color 39.7110, -8.2385, 29.1945 by changing the saturation by 10% instead.

■ 39.7110, -8.2385,
29.1945

■ 39.7110, -8.2385,
29.1945

■ 254.3160, -2.6208,
0.5999

■ 16.9990, -8.3805,
28.0649

■ 86.5760, -10.1440,
33.6978

■ 5.3820, -2.6533,
11.0660

■ 111.9460,
-11.3124, 35.1274

■ 0.0000, 0.0000,
0.0000

■ 137.8430,
-11.7546, 36.9717

■ 164.3270,
-12.4862, 38.3012

■ 191.8110,
-13.2178, 39.6308

■ 216.1200,

-11.8912, 34.0978

235.7480, -7.7638,
16.8840

39.7110, -8.2385,
29.1945

39.7110, -8.2385,
29.1945

34.8040, -9.2704,
33.4979

44.6180, -7.2067,
24.8910

29.7830, -10.7390,
37.9013

49.6390, -5.7380,
20.4876

24.8760, -11.7709,
42.2047

54.5460, -4.7062,
16.1842

24.1750, -11.9183,
42.8195

58.8660, -3.3849,
12.3955

63.8870, -1.9163,
7.9921

■ 68.7940, -0.8844,
3.6887

■ 73.7010, 0.1474,
-0.6148

■ 78.6080, 1.1793,
-4.9182

■ 83.6290, 2.6479,
-9.3216

Harmonies

Analogous

The Analogous color harmony consists of three colors that are next to each other on the color wheel.



40.3010, 0.3446, 29.5540



39.7110, -8.2385, 29.1945



39.2620, -17.3842, 22.5722

Triad

The Triadic color harmony groups three colors that are evenly spaced from another and form a triangle on the color wheel.



39.7110, -8.2385, 29.1945



31.2820, -4.5760, -25.6803



34.1330, 21.6264, -29.9346

Complementary

The Complementary color scheme is a pair of colors which are on the opposite of each other on the color wheel.



39.7110, -8.2385, 29.1945



56.2890, 8.2385, -29.1945

Split Complementary

Split-complementary colors differ from the complementary color scheme. The scheme consists of three colors, the original color and two neighbors of the complement color.



35.9110, 18.2849, -31.4939



39.7110, -8.2385, 29.1945



34.0240, 3.4392, -29.8390

Square

The Square scheme is like the rectangle color scheme, but the four colors are evenly spaced on the color wheel.



39.7110, -8.2385, 29.1945



36.4390, -15.9924, -3.8930



35.6030, 12.0277, -31.2238



42.0120, 15.2771, -0.0105

Rectangle

The Rectangle color scheme consists of four colors that form a rectangle on the color wheel.



39.7110, -8.2385, 29.1945



39.0500, -19.2516, 14.8652



35.6030, 12.0277, -31.2238



35.3070, 21.0476, -30.9642

Sweetspot

The Sweet Spot groups the original color and five complimentary colors.



39.7110, -8.2385, 29.1945



81.2680, -3.0901, 11.1660



43.4220, 13.5960, 25.9399



40.1750, -2.0583, 6.8625



176.0000, 0.0000, 0.0000



48.0000, 0.0000, 0.0000

Same Dimension

The Same Dimension uses a secret algorithm to generate beautiful new colors.



39.7110, -8.2385, 29.1945



42.9580, -12.7973, 44.7638



54.3860, -15.4733, 16.3245



33.1960, -0.5896, 2.4591



33.1230, -16.3296, 57.7741



76.0910, -37.5129, 132.3472

Inverse Universe

The Inverse Universe completely reimagines the original color for something new.



56.2890, 8.2385, -29.1945



68.6290, 12.5079, -45.2786



42.2010, 15.1839, -16.8393



34.2170, 0.8790, -1.9443



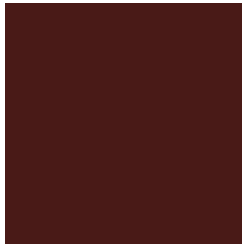
65.8770, 16.3296, -57.7741



150.9090, 37.5129, -132.3472

Previews

White Background



This preview shows how the YUV color 39.7110, -8.2385, 29.1945 looks on a white background.

Color Contrast Check

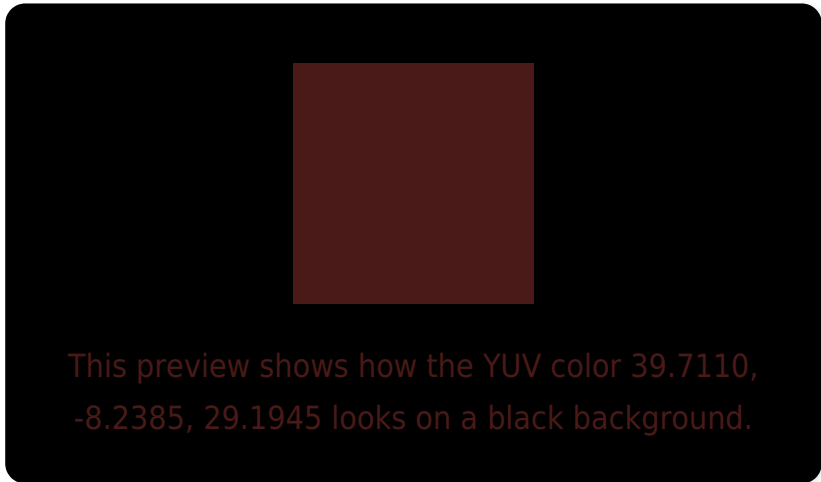
Large Text (above 18pt) WCAG AA ✓ Pass

Any Text WCAG AA ✓ Pass

Large Text (above 18pt) WCAG AAA ✓ Pass

Any Text WCAG AAA ✓ Pass

Black Background



Color Contrast Check

Large Text (above 18pt) WCAG AA × Fail

Any Text WCAG AA × Fail

Large Text (above 18pt) WCAG AAA × Fail

Any Text WCAG AAA × Fail

If you want to check with other color combinations, try the [Color Contrast Checker](#).

YUV 39.7110, -8.2385, 29.1945

Background



This preview shows how black text looks on a background with the YUV color 39.7110, -8.2385, 29.1945.

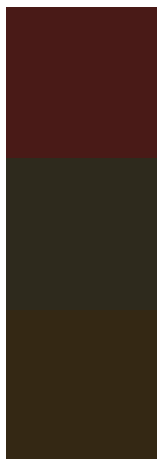


This preview shows how white text looks on a background with the YUV color 39.7110, -8.2385,

Color Blindness Simulation

Color vision deficiency is a very complex topic, and I could not describe the different causes any better than Wikipedia does, so if you want to learn more, you should check out their [article about color blindness](#).

Dichromacy



Original Color

39.7110, -8.2385, 29.1945

Protanopia

41.7140, -6.2680, 3.7588

Deuteranopia

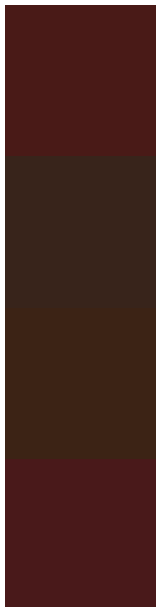
41.3080, -10.5048, 9.3769



Tritanopia

39.5800, -6.2019, 29.3093

Trichromacy



Original Color

39.7110, -8.2385, 29.1945

Protanomaly

40.9540, -6.8793, 13.1953

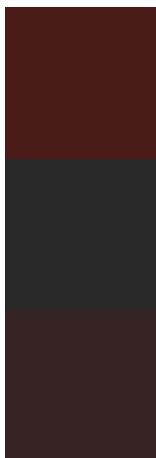
Deuteranomaly

40.8790, -9.8003, 16.7691

Tritanomaly

39.4660, -6.6387, 29.4093

Monochromacy



Original Color

39.7110, -8.2385, 29.1945

Achromatopsia

40.0000, 0.0000, 0.0000

Achromatomaly

39.9690, -2.9427, 10.5512

CSS Examples

Text

The CSS property to change the color of the text to YUV 39.7110, -8.2385, 29.1945 is called "color". The color property can be set on classes, ids or directly on the HTML element.

This example shows how text in the color `rgb(73, 26, 23)` looks like.

```
.text, #text, p{  
    color:rgb(73, 26, 23)  
}
```

If you want to add a text shadow in that color use the text-shadow property, you can generate a text shadow directly with our [CSS Text Shadow Generator](#).

Here you see how black text with a 4 pixel rgb(73, 26, 23) colored shadow looks like.

```
.shadow{ text-shadow: 4px 4px 2px rgb(73, 26, 23) }
```

Border

The CSS property to change the border of an element to YUV 39.7110, -8.2385, 29.1945 is called "border". The border property can be set on classes, ids or directly on the HTML element.

This example shows the color as border, it can be applied via the CSS property "border" or "border-color".

```
.border, #border, table{ border:4px solid rgb(73, 26, 23) }
```


If only the border color should be changed use the property border-color.

```
.border{ border-color:rgb(73, 26, 23) }
```

If you want to add a box shadow in that color use:

Here you see how a box with a 4 pixel rgb(73, 26, 23) colored shadow looks like.

```
.boxshadow{ -moz-box-shadow:4px 4px 4px  
4px rgb(73, 26, 23); -webkit-box-  
shadow:4px 4px 4px 4px rgb(73, 26, 23);  
box-shadow:4px 4px 4px 4px rgb(73, 26, 23)  
}
```

Background

The CSS property to change the background color of an element to YUV 39.7110, -8.2385, 29.1945 is called "background". The background property can be set on classes, ids or directly on the HTML element.

```
.background, #background, body{  
background: rgb(73, 26, 23) }
```

If only the background color should be changed can be used:

```
.background{ background-color: rgb(73, 26,  
23) }
```

This example shows the color as background, it is applied via the CSS property "background".

To optimize and compress your CSS code, you can use our [online CSS compressor and optimizer](#) based on csstidy. If you want to create a linear or radial gradient as background or border, check our [CSS Gradient Generator](#).

Hey! You found this booklet interesting? Support Converting Colors with the new Membership Option!

The pro membership hides all ads, plus gives you double the colors in the color bucket, and more awesome pro features!

[Learn more, Memberships starting at \\$2.50/m!](#)

**Follow me
on Twitter!**

@ConvertingColor