

Converting Colors

YUV(40.2590, -6.0437, 25.2059)

Have a look what the booklet for
YUV(40.2590, -6.0437, 25.2059)
contains.

YUV(40.2590, -6.0437, 25.2059)	3
<i>Conversions</i>	4
<i>Details</i>	6
<i>Harmonies</i>	12
<i>Previews</i>	24
<i>Color Blindness Simulation</i>	28
<i>CSS Examples</i>	31

Color

**YUV(40.2590, -6.0437,
25.2059)**

Conversions

Conversions Part 1

Format	Color
Hex	451C1C
RGB	69, 28, 28
RGB Percent	27%, 11%, 11%
CMY	0.7294, 0.8902, 0.8902
CMYK	0.00, 0.59, 0.59, 0.73
HSL	0°, 42%, 19%
HSV	0°, 59%, 27%
XYZ	3.0791, 2.1796, 1.3570
YIQ	40.2590, 24.4360, 8.6920

Conversions

Conversions Part 2

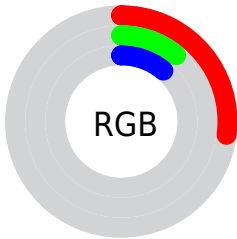
Format	Color
RYB	69, 28, 28
Decimal	4529180
CIELab	16.40, 19.72, 9.50
CIELCh	16, 21.892, 25.708
Yxy	2.1796, 0.4654, 0.3295
Android (android.graphics.Color)	4282719260 (0xFF451C1C)
YUV	40.2590, -6.0437, 25.2059
Hunter-Lab	14.7633, 11.3929, 4.8845

Details

The YUV color **40.2590, -6.0437, 25.2059** is a dark color, and the websafe version is hex **330000**. A complement of this color would be **56.7410, 6.0437, -25.2059**, and the grayscale version is **40.0000, 0.0000, 0.0000**.

A 20% lighter version of the original color is **86.8250, -7.8017, 29.0945**, and **3.2890, -1.6215, 6.7625** is the 20% darker color. If you saturate the color by 10%, you get **35.3520, -7.0755, 29.5093**, and if you desaturate by 10%, it is **45.1660, -5.0118, 20.9024**.

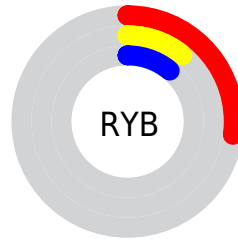
Distribution



Red (27%)

Green (11%)

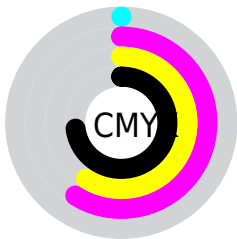
Blue (11%)



Red (27%)

Yellow (11%)

Blue (11%)

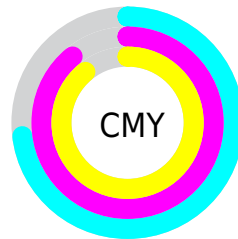


Cyan (0%)

Magenta (59%)

Yellow (59%)

Black (73%)



Cyan (73%)

Magenta (89%)

Yellow (89%)

Brightness & Saturation Gradients

These gradients show how the YUV color 40.2590, -6.0437, 25.2059 changes by changing the brightness by 10 percent. The first figure shows a shift by +10% for each color and the second figure -10%.

Similar to the brightness gradients but the following saturation gradients show a change of the YUV color 40.2590, -6.0437, 25.2059 by changing the saturation by 10% instead.

■ 40.2590, -6.0437,
25.2059

■ 40.2590, -6.0437,
25.2059

■ 255.0000, 0.0000,
0.0000

■ 17.3900, -8.0803,
25.0910

■ 86.8250, -7.8017,
29.0945

■ 3.2890, -1.6215,
6.7625

■ 111.4230, -8.0965,
30.3240

■ 0.0000, 0.0000,
0.0000

■ 137.3200, -8.5388,
32.1684

■ 163.8040, -9.2704,
33.4979

■ 191.1030, -9.4178,
34.1127

■ 218.0920, -9.4124,

32.3683

237.7200, -5.2850,
15.1546

40.2590, -6.0437,
25.2059

40.2590, -6.0437,
25.2059

35.3520, -7.0755,
29.5093

45.1660, -5.0118,
20.9024

30.4450, -8.1074,
33.8127

50.0730, -3.9800,
16.5990

25.5380, -9.1392,
38.1162

54.9800, -2.9481,
12.2955

20.6310, -10.1711,
42.4196

59.8870, -1.9163,
7.9921

64.7940, -0.8844,
3.6887

■ 69.0000, 0.0000,
0.0000

■ 73.9070, 1.0318,
-4.3034

■ 78.8140, 2.0637,
-8.6069

■ 83.7210, 3.0955,
-12.9103

Harmonies

Analogous

The Analogous color harmony consists of three colors that are next to each other on the color wheel.



41.1970, 1.3819, 23.5062



40.2590, -6.0437, 25.2059



39.8040, -12.7214, 20.3429

Triad

The Triadic color harmony groups three colors that are evenly spaced from another and form a triangle on the color wheel.



40.2590, -6.0437, 25.2059



34.8810, -6.3503, -16.5586



33.4490, 19.0056, -29.3348

Complementary

The Complementary color scheme is a pair of colors which are on the opposite of each other on the color wheel.



40.2590, -6.0437, 25.2059



56.7410, 6.0437, -25.2059

Split Complementary

Split-complementary colors differ from the complementary color scheme. The scheme consists of three colors, the original color and two neighbors of the complement color.



35.1130, 15.2273, -30.7941



40.2590, -6.0437, 25.2059



32.5080, 2.7076, -28.5095

Square

The Square scheme is like the rectangle color scheme, but the four colors are evenly spaced on the color wheel.



40.2590, -6.0437, 25.2059



37.6180, -14.1087, -1.4190



34.3320, 9.6963, -30.1092



40.9470, 13.8301, -2.5845

Rectangle

The Rectangle color scheme consists of four colors that form a rectangle on the color wheel.



40.2590, -6.0437, 25.2059



39.2610, -15.9047, 14.6801



34.3320, 9.6963, -30.1092



33.9220, 18.2795, -29.7496

Sweetspot

The Sweet Spot groups the original color and five complimentary colors.



40.2590, -6.0437, 25.2059



77.7840, -2.3585, 9.8364



44.9330, 11.8650, 21.1068



38.9900, -1.4741, 6.1478



173.0000, 0.0000, 0.0000



46.0000, 0.0000, 0.0000

Same Dimension

The Same Dimension uses a secret algorithm to generate beautiful new colors.



40.2590, -6.0437, 25.2059



44.8370, -9.2866, 38.7310



52.5860, -12.1209, 14.3951



33.1960, -0.5896, 2.4591



29.6010, -14.5933, 60.8629



67.8730, -33.4614, 139.5544

Inverse Universe

The Inverse Universe completely reimagines the original color for something new.



56.7410, 6.0437, -25.2059



70.1630, 9.2866, -38.7310



45.0010, 11.8315, -14.9099



34.8040, 0.5896, -2.4591



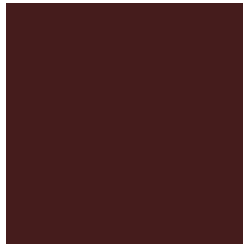
69.3990, 14.5933, -60.8629



159.1270, 33.4614, -139.5544

Previews

White Background



This preview shows how the YUV color 40.2590, -6.0437, 25.2059 looks on a white background.

Color Contrast Check

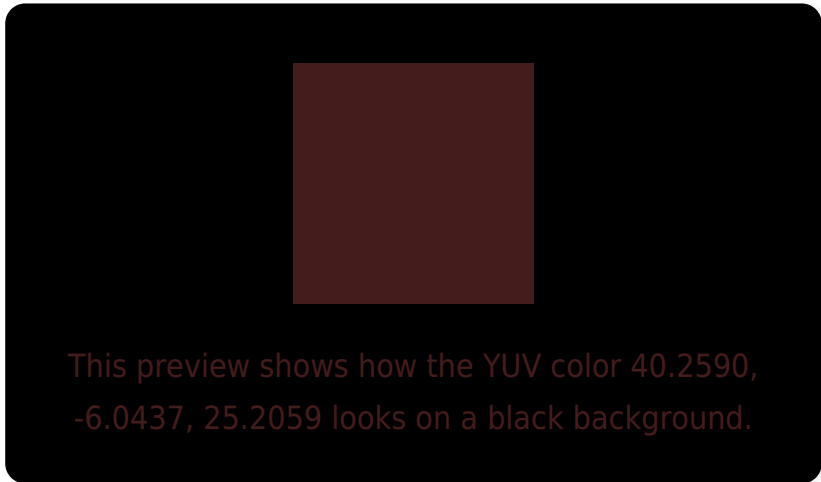
Large Text (above 18pt) WCAG AA ✓ Pass

Any Text WCAG AA ✓ Pass

Large Text (above 18pt) WCAG AAA ✓ Pass

Any Text WCAG AAA ✓ Pass

Black Background



Color Contrast Check

Large Text (above 18pt) WCAG AA × Fail

Any Text WCAG AA × Fail

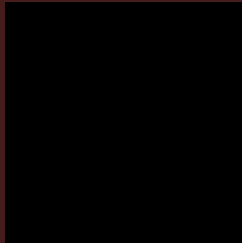
Large Text (above 18pt) WCAG AAA × Fail

Any Text WCAG AAA × Fail

If you want to check with other color combinations, try the [Color Contrast Checker](#).

YUV 40.2590, -6.0437, 25.2059

Background



This preview shows how black text looks on a background with the YUV color 40.2590, -6.0437, 25.2059.



This preview shows how white text looks on a background with the YUV color 40.2590, -6.0437,

Color Blindness Simulation

Color vision deficiency is a very complex topic, and I could not describe the different causes any better than Wikipedia does, so if you want to learn more, you should check out their [article about color blindness](#).

Dichromacy



Original Color

40.2590, -6.0437, 25.2059

Protanopia

41.6860, -3.7892, 2.0294

Deuteranopia

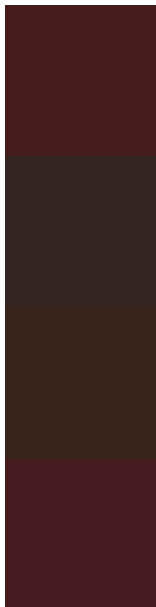
41.3940, -7.5892, 7.5475



Tritanopia

40.4870, -5.1701, 25.0059

Trichromacy



Original Color

40.2590, -6.0437, 25.2059

Protanomaly

41.2140, -4.5425, 10.3363

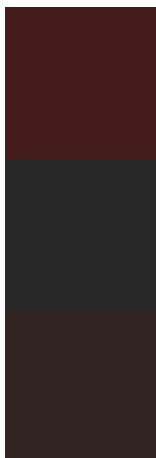
Deuteranomaly

41.2530, -7.0267, 13.8101

Tritanomaly

40.3730, -5.6069, 25.1059

Monochromacy



Original Color

40.2590, -6.0437, 25.2059

Achromatopsia

40.0000, 0.0000, 0.0000

Achromatomaly

40.4850, -2.2111, 9.2217

CSS Examples

Text

The CSS property to change the color of the text to YUV 40.2590, -6.0437, 25.2059 is called "color". The color property can be set on classes, ids or directly on the HTML element.

This example shows how text in the color `rgb(69, 28, 28)` looks like.

```
.text, #text, p{  
    color:rgb(69, 28, 28)  
}
```

If you want to add a text shadow in that color use the text-shadow property, you can generate a text shadow directly with our [CSS Text Shadow Generator](#).

Here you see how black text with a 4 pixel rgb(69, 28, 28) colored shadow looks like.

```
.shadow{ text-shadow: 4px 4px 2px rgb(69, 28, 28) }
```

Border

The CSS property to change the border of an element to YUV 40.2590, -6.0437, 25.2059 is called "border". The border property can be set on classes, ids or directly on the HTML element.

This example shows the color as border, it can be applied via the CSS property "border" or "border-color".

```
.border, #border, table{ border:4px solid rgb(69, 28, 28) }
```


If only the border color should be changed use the property `border-color`.

```
.border{ border-color:rgb(69, 28, 28) }
```

If you want to add a box shadow in that color use:

Here you see how a box with a 4 pixel `rgb(69, 28, 28)` colored shadow looks like.

```
.boxshadow{ -moz-box-shadow:4px 4px 4px  
4px rgb(69, 28, 28); -webkit-box-  
shadow:4px 4px 4px 4px rgb(69, 28, 28);  
box-shadow:4px 4px 4px 4px rgb(69, 28, 28)  
}
```

Background

The CSS property to change the background color of an element to YUV 40.2590, -6.0437, 25.2059 is called "background". The background property can be set on classes, ids or directly on the HTML element.

```
.background, #background, body{  
background: rgb(69, 28, 28) }
```

If only the background color should be changed can be used:

```
.background{ background-color: rgb(69, 28,  
28) }
```

This example shows the color as background, it is applied via the CSS property "background".

To optimize and compress your CSS code, you can use our [online CSS compressor and optimizer](#) based on csstidy. If you want to create a linear or radial gradient as background or border, check our [CSS Gradient Generator](#).

Hey! You found this booklet interesting? Support Converting Colors with the new Membership Option!

The pro membership hides all ads, plus gives you double the colors in the color bucket, and more awesome pro features!

[Learn more, Memberships starting at \\$2.50/m!](#)

**Follow me
on Twitter!**

@ConvertingColor