

Converting Colors

YUV(41.1720, -7.4798, 19.1432)

Have a look what the booklet for
YUV(41.1720, -7.4798, 19.1432)
contains.

YUV(41.1720, -7.4798, 19.1432)	3
<i>Conversions</i>	4
<i>Details</i>	6
<i>Harmonies</i>	12
<i>Previews</i>	24
<i>Color Blindness Simulation</i>	28
<i>CSS Examples</i>	31

Color

**YUV(41.1720, -7.4798,
19.1432)**

Conversions

Conversions Part 1

Format	Color
Hex	3F211A
RGB	63, 33, 26
RGB Percent	25%, 13%, 10%
CMY	0.7529, 0.8706, 0.8980
CMYK	0.00, 0.48, 0.59, 0.75
HSL	11°, 42%, 17%
HSV	11°, 59%, 25%
XYZ	2.7802, 2.2191, 1.2591
YIQ	41.1720, 20.1270, 4.1830

Conversions

Conversions Part 2

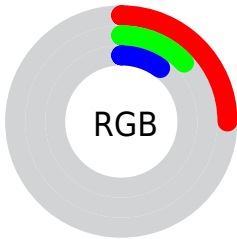
Format	Color
R_{YB}	63, 35, 26
Decimal	4137242
CIE _{Lab}	16.60, 13.55, 10.98
CIE _{LCh}	17, 17.439, 39.003
Yxy	2.2191, 0.4442, 0.3546
Android (android.graphics.Color)	4282327322 (0xFF3F211A)
YUV	41.1720, -7.4798, 19.1432
Hunter-Lab	14.8965, 7.2455, 5.4163

Details

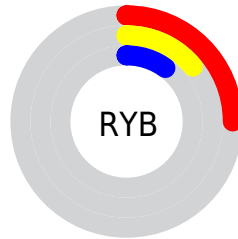
The YUV color **41.1720, -7.4798, 19.1432** is a dark color, and the websafe version is hex **663333**. A complement of this color would be **47.8280, 7.4798, -19.1432**, and the grayscale version is **41.0000, 0.0000, 0.0000**.

A 20% lighter version of the original color is **87.4390, -9.0904, 22.4170**, and **0.0000, 0.0000, 0.0000** is the 20% darker color. If you saturate the color by 10%, you get **37.5530, -8.6536, 22.3170**, and if you desaturate by 10%, it is **44.7910, -6.3060, 15.9693**.

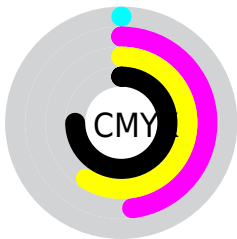
Distribution



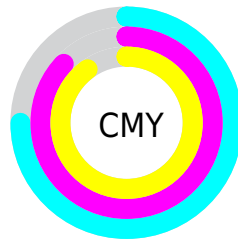
- Red (25%)
- Green (13%)
- Blue (10%)



- Red (25%)
- Yellow (14%)
- Blue (10%)



- Cyan (0%)
- Magenta (48%)
- Yellow (59%)
- Black (75%)



- Cyan (75%)
- Magenta (87%)
- Yellow (90%)

Brightness & Saturation Gradients

These gradients show how the YUV color 41.1720, -7.4798, 19.1432 changes by changing the brightness by 10 percent. The first figure shows a shift by +10% for each color and the second figure -10%.

Similar to the brightness gradients but the following saturation gradients show a change of the YUV color 41.1720, -7.4798, 19.1432 by changing the saturation by 10% instead.

■ 41.1720, -7.4798,
19.1432

■ 41.1720, -7.4798,
19.1432

■ 254.7720, -0.8736,
0.2000

■ 19.3030, -9.5164,
19.0283

■ 87.4390, -9.0904,
22.4170

■ 0.0000, 0.0000,
0.0000

■ 112.0370, -9.3852,
23.6466

■ 137.5210,
-10.1169, 24.9761

■ 163.8200,
-10.2643, 25.5909

■ 191.3040,
-10.9959, 26.9204

■ 218.7170,

-10.7065, 27.4352

240.4270, -7.6055,
12.7805

41.1720, -7.4798,
19.1432

41.1720, -7.4798,
19.1432

37.5530, -8.6536,
22.3170

44.7910, -6.3060,
15.9693

33.8200, -10.2643,
25.5909

48.5240, -4.6953,
12.6955

30.2010, -11.4381,
28.7647

52.1430, -3.5215,
9.5216

26.5820, -12.6119,
31.9386

55.7620, -2.3477,
6.3477

25.8810, -12.7593,
32.5534

60.0820, -1.0264,
2.5591

■ 63.7010, 0.1474,
-0.6148

■ 67.3200, 1.3212,
-3.7886

■ 70.9390, 2.4951,
-6.9625

■ 74.6720, 4.1057,
-10.2363

Harmonies

Analogous

The Analogous color harmony consists of three colors that are next to each other on the color wheel.



41.9640, -1.9543, 20.2026



41.1720, -7.4798, 19.1432



40.5150, -11.0999, 13.5803

Triad

The Triadic color harmony groups three colors that are evenly spaced from another and form a triangle on the color wheel.



41.1720, -7.4798, 19.1432



35.7220, -1.8349, -18.1732



39.9630, 12.8362, -10.4916

Complementary

The Complementary color scheme is a pair of colors which are on the opposite of each other on the color wheel.



41.1720, -7.4798, 19.1432



47.8280, 7.4798, -19.1432

Split Complementary

Split-complementary colors differ from the complementary color scheme. The scheme consists of three colors, the original color and two neighbors of the complement color.



33.7110, 14.9325, -29.5645



41.1720, -7.4798, 19.1432



32.6050, 5.6177, -28.5946

Square

The Square scheme is like the rectangle color scheme, but the four colors are evenly spaced on the color wheel.



41.1720, -7.4798, 19.1432



38.3770, -8.5669, -5.5926



33.9730, 10.8593, -29.7943



42.0250, 8.8617, 4.3631

Rectangle

The Rectangle color scheme consists of four colors that form a rectangle on the color wheel.



41.1720, -7.4798, 19.1432



39.8410, -12.2466, 8.0324



33.9730, 10.8593, -29.7943



37.8590, 13.8735, -16.5393

Sweetspot

The Sweet Spot groups the original color and five complimentary colors.



41.1720, -7.4798, 19.1432



73.2460, -3.0793, 7.6773



40.4830, 7.6499, 19.7474



35.8650, -1.9054, 4.5034



168.0000, 0.0000, 0.0000



41.0000, 0.0000, 0.0000

Same Dimension

The Same Dimension uses a secret algorithm to generate beautiful new colors.



41.1720, -7.4798, 19.1432



47.7990, -11.7329, 29.9943



51.7380, -12.6888, 9.8768



28.8970, -0.4422, 1.8443



38.6720, -19.0653, 48.5227



91.0320, -44.8788, 114.8589

Inverse Universe

The Inverse Universe completely reimagines the original color for something new.



47.8280, 7.4798, -19.1432



58.2010, 11.7329, -29.9943



37.2620, 12.6888, -9.8768



29.5160, 0.7316, -1.3295



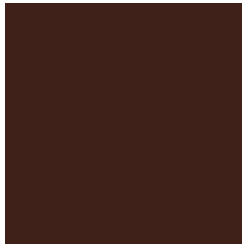
55.3280, 19.0653, -48.5227



130.9680, 44.8788, -114.8589

Previews

White Background



This preview shows how the YUV color 41.1720, -7.4798, 19.1432 looks on a white background.

Color Contrast Check

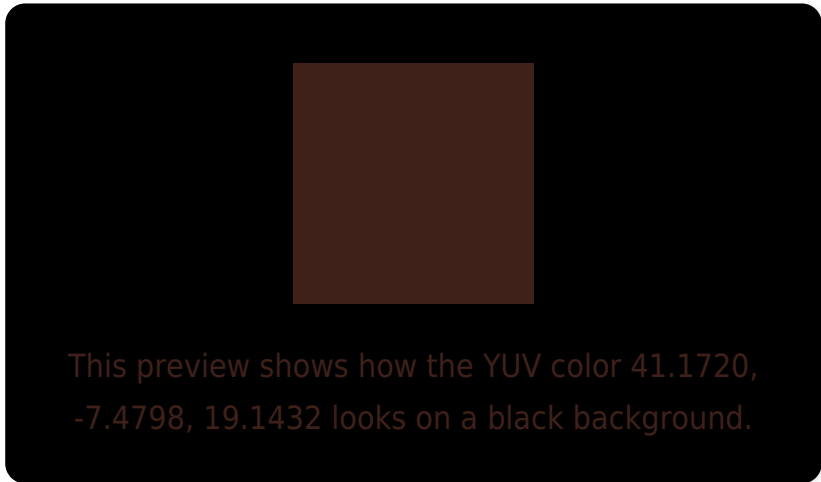
Large Text (above 18pt) WCAG AA ✓ Pass

Any Text WCAG AA ✓ Pass

Large Text (above 18pt) WCAG AAA ✓ Pass

Any Text WCAG AAA ✓ Pass

Black Background



Color Contrast Check

Large Text (above 18pt) WCAG AA × Fail

Any Text WCAG AA × Fail

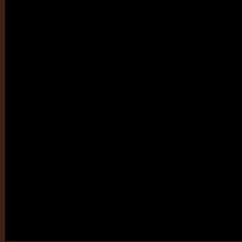
Large Text (above 18pt) WCAG AAA × Fail

Any Text WCAG AAA × Fail

If you want to check with other color combinations, try the [Color Contrast Checker](#).

YUV 41.1720, -7.4798, 19.1432

Background



This preview shows how black text looks on a background with the YUV color 41.1720, -7.4798, 19.1432.

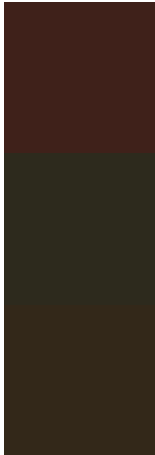


This preview shows how white text looks on a background with the YUV color 41.1720, -7.4798,

Color Blindness Simulation

Color vision deficiency is a very complex topic, and I could not describe the different causes any better than Wikipedia does, so if you want to learn more, you should check out their [article about color blindness](#).

Dichromacy



Original Color

41.1720, -7.4798, 19.1432

Protanopia

41.4150, -6.1206, 3.1440

Deuteranopia

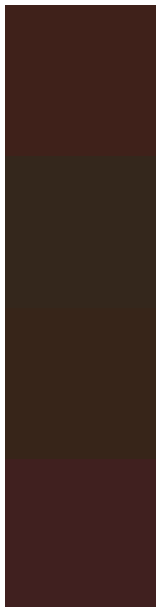
41.5790, -8.1734, 8.2622



Tritanopia

41.7960, -3.8434, 19.4729

Trichromacy



Original Color

41.1720, -7.4798, 19.1432

Protanomaly

41.6330, -6.7211, 9.0919

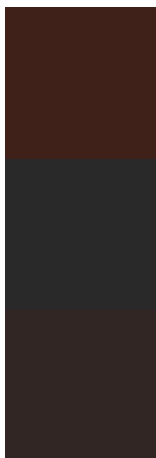
Deuteranomaly

41.0140, -7.8949, 12.2657

Tritanomaly

41.4540, -5.1538, 19.7728

Monochromacy



Original Color

41.1720, -7.4798, 19.1432

Achromatopsia

41.0000, 0.0000, 0.0000

Achromatomaly

41.0610, -2.4951, 6.9625

CSS Examples

Text

The CSS property to change the color of the text to YUV 41.1720, -7.4798, 19.1432 is called "color". The color property can be set on classes, ids or directly on the HTML element.

This example shows how text in the color `rgb(63, 33, 26)` looks like.

```
.text, #text, p{  
    color:rgb(63, 33, 26)  
}
```

If you want to add a text shadow in that color use the text-shadow property, you can generate a text shadow directly with our [CSS Text Shadow Generator](#).

Here you see how black text with a 4 pixel rgb(63, 33, 26) colored shadow looks like.

```
.shadow{ text-shadow: 4px 4px 2px rgb(63, 33, 26) }
```

Border

The CSS property to change the border of an element to YUV 41.1720, -7.4798, 19.1432 is called "border". The border property can be set on classes, ids or directly on the HTML element.

This example shows the color as border, it can be applied via the CSS property "border" or "border-color".

```
.border, #border, table{ border:4px solid rgb(63, 33, 26) }
```


If only the border color should be changed use the property `border-color`.

```
.border{ border-color:rgb(63, 33, 26) }
```

If you want to add a box shadow in that color use:

Here you see how a box with a 4 pixel `rgb(63, 33, 26)` colored shadow looks like.

```
.boxshadow{ -moz-box-shadow:4px 4px 4px  
4px rgb(63, 33, 26); -webkit-box-  
shadow:4px 4px 4px 4px rgb(63, 33, 26);  
box-shadow:4px 4px 4px 4px rgb(63, 33, 26)  
}
```

Background

The CSS property to change the background color of an element to YUV 41.1720, -7.4798, 19.1432 is called "background". The background property can be set on classes, ids or directly on the HTML element.

```
.background, #background, body{  
background: rgb(63, 33, 26) }
```

If only the background color should be changed can be used:

```
.background{ background-color: rgb(63, 33,  
26) }
```

This example shows the color as background, it is applied via the CSS property "background".

To optimize and compress your CSS code, you can use our [online CSS compressor and optimizer](#) based on csstidy. If you want to create a linear or radial gradient as background or border, check our [CSS Gradient Generator](#).

Hey! You found this booklet interesting? Support Converting Colors with the new Membership Option!

The pro membership hides all ads, plus gives you double the colors in the color bucket, and more awesome pro features!

[Learn more, Memberships starting at \\$2.50/m!](#)

**Follow me
on Twitter!**

@ConvertingColor