

Converting Colors

YUV(41.5580, -6.1911, 25.8206)

Have a look what the booklet for
YUV(41.5580, -6.1911, 25.8206)
contains.

YUV(41.5580, -6.1911, 25.8206)	3
<i>Conversions</i>	4
<i>Details</i>	6
<i>Harmonies</i>	12
<i>Previews</i>	24
<i>Color Blindness Simulation</i>	28
<i>CSS Examples</i>	31

Color

**YUV(41.5580, -6.1911,
25.8206)**

Conversions

Conversions Part 1

Format	Color
Hex	471D1D
RGB	71, 29, 29
RGB Percent	28%, 11%, 11%
CMY	0.7216, 0.8863, 0.8863
CMYK	0.00, 0.59, 0.59, 0.72
HSL	0°, 42%, 20%
HSV	0°, 59%, 28%
XYZ	3.2597, 2.3070, 1.4359
YIQ	41.5580, 25.0320, 8.9040

Conversions

Conversions Part 2

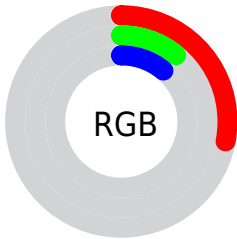
Format	Color
RYB	71, 29, 29
Decimal	4660509
CIELab	17.02, 20.11, 9.68
CIElCh	17, 22.320, 25.712
Yxy	2.3070, 0.4655, 0.3295
Android (android.graphics.Color)	4282850589 (0xFF471D1D)
YUV	41.5580, -6.1911, 25.8206
Hunter-Lab	15.1889, 11.7270, 5.0272

Details

The YUV color **41.5580, -6.1911, 25.8206** is a dark color, and the websafe version is hex **663333**. A complement of this color would be **58.4420, 6.1911, -25.8206**, and the grayscale version is **42.0000, 0.0000, 0.0000**.

A 20% lighter version of the original color is **88.1240, -7.9491, 29.7093**, and **5.0830, -2.5059, 10.4512** is the 20% darker color. If you saturate the color by 10%, you get **36.6510, -7.2229, 30.1241**, and if you desaturate by 10%, it is **46.4650, -5.1592, 21.5172**.

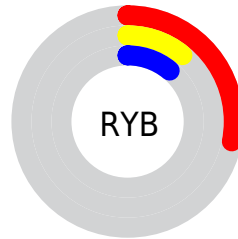
Distribution



Red (28%)

Green (11%)

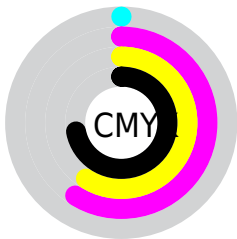
Blue (11%)



Red (28%)

Yellow (11%)

Blue (11%)

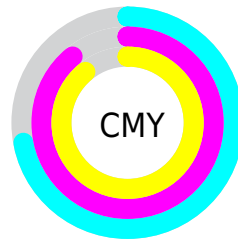


Cyan (0%)

Magenta (59%)

Yellow (59%)

Black (72%)



Cyan (72%)

Magenta (89%)

Yellow (89%)

Brightness & Saturation Gradients

These gradients show how the YUV color 41.5580, -6.1911, 25.8206 changes by changing the brightness by 10 percent. The first figure shows a shift by +10% for each color and the second figure -10%.

Similar to the brightness gradients but the following saturation gradients show a change of the YUV color 41.5580, -6.1911, 25.8206 by changing the saturation by 10% instead.

■ 41.5580, -6.1911,
25.8206

■ 41.5580, -6.1911,
25.8206

■ 255.0000, 0.0000,
0.0000

■ 18.8030, -7.7909,
25.6058

■ 88.1240, -7.9491,
29.7093

■ 5.0830, -2.5059,
10.4512

■ 113.0210, -8.3914,
31.5536

■ 0.0000, 0.0000,
0.0000

■ 139.2060, -8.9756,
32.2683

■ 165.8040, -9.2704,
33.4979

■ 192.7010, -9.7126,
35.3422

■ 218.9070, -8.8282,

31.6536

■ 238.5350, -4.7008,
14.4398

■ 41.5580, -6.1911,
25.8206

■ 41.5580, -6.1911,
25.8206

■ 36.6510, -7.2229,
30.1241

■ 46.4650, -5.1592,
21.5172

■ 31.7440, -8.2548,
34.4275

■ 51.3720, -4.1274,
17.2138

■ 26.8370, -9.2866,
38.7310

■ 56.2790, -3.0955,
12.9103

■ 21.9300, -10.3185,
43.0344

■ 61.1860, -2.0637,
8.6069

■ 21.2290, -10.4659,
43.6492

■ 66.7940, -0.8844,
3.6887

■ 71.7010, 0.1474,
-0.6148

■ 76.6080, 1.1793,
-4.9182

■ 81.5150, 2.2111,
-9.2217

■ 86.4220, 3.2430,
-13.5251

Harmonies

Analogous

The Analogous color harmony consists of three colors that are next to each other on the color wheel.



42.4960, 1.2345, 24.1210



41.5580, -6.1911, 25.8206



41.1030, -12.8688, 20.9577

Triad

The Triadic color harmony groups three colors that are evenly spaced from another and form a triangle on the color wheel.



41.5580, -6.1911, 25.8206



35.8810, -6.3503, -16.5586



34.2640, 19.5898, -30.0495

Complementary

The Complementary color scheme is a pair of colors which are on the opposite of each other on the color wheel.



41.5580, -6.1911, 25.8206



58.4420, 6.1911, -25.8206

Split Complementary

Split-complementary colors differ from the complementary color scheme. The scheme consists of three colors, the original color and two neighbors of the complement color.



35.9280, 15.8115, -31.5089



41.5580, -6.1911, 25.8206



33.7960, 2.5656, -29.6391

Square

The Square scheme is like the rectangle color scheme, but the four colors are evenly spaced on the color wheel.



41.5580, -6.1911, 25.8206



38.6180, -14.1087, -1.4190



35.6200, 9.5543, -31.2387



42.6480, 13.9775, -3.1993

Rectangle

The Rectangle color scheme consists of four colors that form a rectangle on the color wheel.



41.5580, -6.1911, 25.8206



40.2610, -15.9047, 14.6801



35.6200, 9.5543, -31.2387



35.3240, 18.5743, -30.9791

Sweetspot

The Sweet Spot groups the original color and five complimentary colors.



41.5580, -6.1911, 25.8206



80.0830, -2.5059, 10.4512



46.3460, 12.1544, 21.6216



38.9900, -1.4741, 6.1478



173.0000, 0.0000, 0.0000



46.0000, 0.0000, 0.0000

Same Dimension

The Same Dimension uses a secret algorithm to generate beautiful new colors.



41.5580, -6.1911, 25.8206



46.4350, -9.5815, 39.9605



53.8850, -12.2683, 15.0099



33.1960, -0.5896, 2.4591



29.6010, -14.5933, 60.8629



67.8730, -33.4614, 139.5544

Inverse Universe

The Inverse Universe completely reimagines the original color for something new.



58.4420, 6.1911, -25.8206



72.5650, 9.5815, -39.9605



46.1150, 12.2683, -15.0099



34.8040, 0.5896, -2.4591



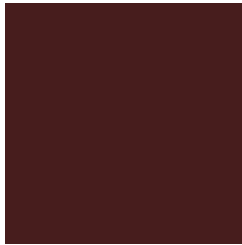
69.3990, 14.5933, -60.8629



159.1270, 33.4614, -139.5544

Previews

White Background



This preview shows how the YUV color 41.5580, -6.1911, 25.8206 looks on a white background.

Color Contrast Check

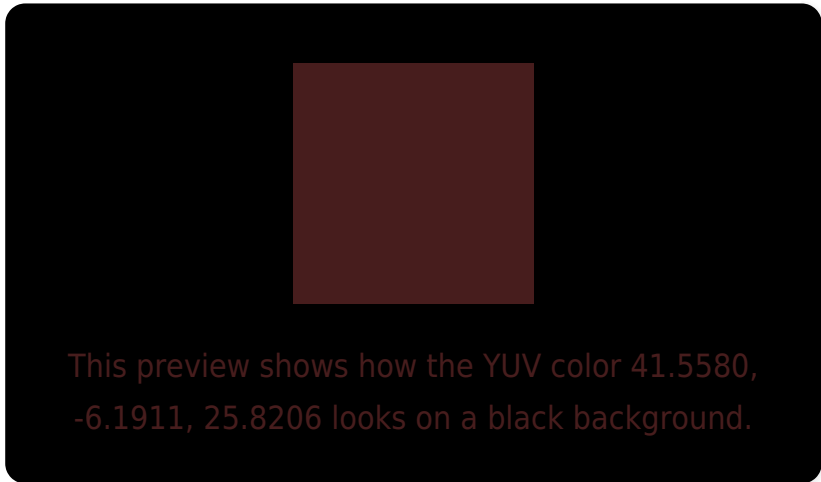
Large Text (above 18pt) WCAG AA ✓ Pass

Any Text WCAG AA ✓ Pass

Large Text (above 18pt) WCAG AAA ✓ Pass

Any Text WCAG AAA ✓ Pass

Black Background



Color Contrast Check

Large Text (above 18pt) WCAG AA × Fail

Any Text WCAG AA × Fail

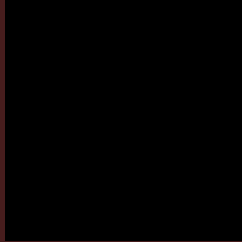
Large Text (above 18pt) WCAG AAA × Fail

Any Text WCAG AAA × Fail

If you want to check with other color combinations, try the [Color Contrast Checker](#).

YUV 41.5580, -6.1911, 25.8206

Background



This preview shows how black text looks on a background with the YUV color 41.5580, -6.1911, 25.8206.



This preview shows how white text looks on a background with the YUV color 41.5580, -6.1911,

Color Blindness Simulation

Color vision deficiency is a very complex topic, and I could not describe the different causes any better than Wikipedia does, so if you want to learn more, you should check out their [article about color blindness](#).

Dichromacy



Original Color

41.5580, -6.1911, 25.8206

Protanopia

42.6860, -3.7892, 2.0294

Deuteranopia

42.6930, -7.7366, 8.1622



Tritanopia

41.7860, -5.3175, 25.6207

Trichromacy



Original Color

41.5580, -6.1911, 25.8206

Protanomaly

42.2140, -4.5425, 10.3363

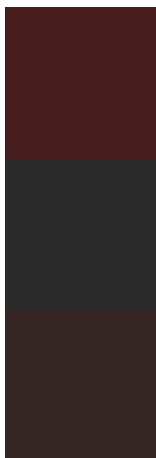
Deuteranomaly

42.5520, -7.1741, 14.4249

Tritanomaly

41.6720, -5.7543, 25.7207

Monochromacy



Original Color

41.5580, -6.1911, 25.8206

Achromatopsia

42.0000, 0.0000, 0.0000

Achromatomaly

41.7840, -2.3585, 9.8364

CSS Examples

Text

The CSS property to change the color of the text to YUV 41.5580, -6.1911, 25.8206 is called "color". The color property can be set on classes, ids or directly on the HTML element.

This example shows how text in the color `rgb(71, 29, 29)` looks like.

```
.text, #text, p{  
    color:rgb(71, 29, 29)  
}
```

If you want to add a text shadow in that color use the text-shadow property, you can generate a text shadow directly with our [CSS Text Shadow Generator](#).

Here you see how black text with a 4 pixel rgb(71, 29, 29) colored shadow looks like.

```
.shadow{ text-shadow: 4px 4px 2px rgb(71, 29, 29) }
```

Border

The CSS property to change the border of an element to YUV 41.5580, -6.1911, 25.8206 is called "border". The border property can be set on classes, ids or directly on the HTML element.

This example shows the color as border, it can be applied via the CSS property "border" or "border-color".

```
.border, #border, table{ border:4px solid rgb(71, 29, 29) }
```


If only the border color should be changed use the property `border-color`.

```
.border{ border-color:rgb(71, 29, 29) }
```

If you want to add a box shadow in that color use:

Here you see how a box with a 4 pixel `rgb(71, 29, 29)` colored shadow looks like.

```
.boxshadow{ -moz-box-shadow:4px 4px 4px  
4px rgb(71, 29, 29); -webkit-box-  
shadow:4px 4px 4px 4px rgb(71, 29, 29);  
box-shadow:4px 4px 4px 4px rgb(71, 29, 29)  
}
```

Background

The CSS property to change the background color of an element to YUV 41.5580, -6.1911, 25.8206 is called "background". The background property can be set on classes, ids or directly on the HTML element.

```
.background, #background, body{  
background: rgb(71, 29, 29) }
```

If only the background color should be changed can be used:

```
.background{ background-color: rgb(71, 29,  
29) }
```

This example shows the color as background, it is applied via the CSS property "background".

To optimize and compress your CSS code, you can use our [online CSS compressor and optimizer](#) based on csstidy. If you want to create a linear or radial gradient as background or border, check our [CSS Gradient Generator](#).

Hey! You found this booklet
interesting? Support Converting
Colors with the new Membership
Option!

The pro membership hides all ads, plus gives you
double the colors in the color bucket, and more
awesome pro features!

[Learn more, Memberships starting at \\$2.50/m!](#)

**Follow me
on Twitter!**

@ConvertingColor