

Converting Colors

YUV(41.8680, -6.3439, 28.1798)

Have a look what the booklet for
YUV(41.8680, -6.3439, 28.1798)
contains.

YUV(41.8680, -6.3439, 28.1798)	3
<i>Conversions</i>	4
<i>Details</i>	6
<i>Harmonies</i>	12
<i>Previews</i>	24
<i>Color Blindness Simulation</i>	28
<i>CSS Examples</i>	31

Color

**YUV(41.8680, -6.3439,
28.1798)**

Conversions

Conversions Part 1

Format	Color
Hex	4A1C1D
RGB	74, 28, 29
RGB Percent	29%, 11%, 11%
CMY	0.7098, 0.8902, 0.8863
CMYK	0.00, 0.62, 0.61, 0.71
HSL	359°, 45%, 20%
HSV	359°, 62%, 29%
XYZ	3.4611, 2.3751, 1.4384
YIQ	41.8680, 27.0950, 10.0630

Conversions

Conversions Part 2

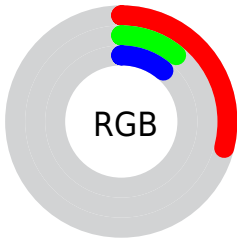
Format	Color
R_{YB}	74, 28, 29
Decimal	4856861
CIE _{Lab}	17.34, 22.00, 10.21
CIE _{LCh}	17, 24.257, 24.892
Y _{xy}	2.3751, 0.4758, 0.3265
Android (android.graphics.Color)	4283046941 (0xFF4A1C1D)
YUV	41.8680, -6.3439, 28.1798
Hunter-Lab	15.4112, 13.1180, 5.2540

Details

The YUV color **41.8680, -6.3439, 28.1798** is a dark color, and the websafe version is hex **663333**. A complement of this color would be **60.1320, 6.3439, -28.1798**, and the grayscale version is **42.0000, 0.0000, 0.0000**.

A 20% lighter version of the original color is **89.3200, -8.5388, 32.1684**, and **6.8770, -3.3904, 14.1399** is the 20% darker color. If you saturate the color by 10%, you get **36.9610, -7.3758, 32.4832**, and if you desaturate by 10%, it is **46.7750, -5.3121, 23.8763**.

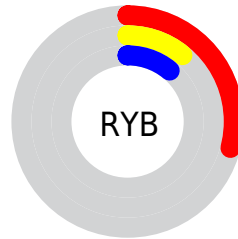
Distribution



Red (29%)

Green (11%)

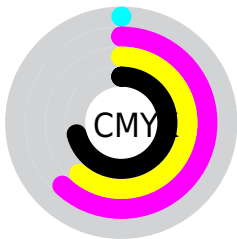
Blue (11%)



Red (29%)

Yellow (11%)

Blue (11%)

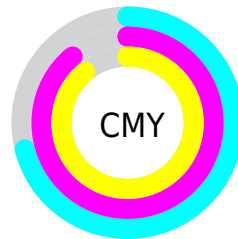


Cyan (0%)

Magenta (62%)

Yellow (61%)

Black (71%)



Cyan (71%)

Magenta (89%)

Yellow (89%)

Brightness & Saturation Gradients

These gradients show how the YUV color 41.8680, -6.3439, 28.1798 changes by changing the brightness by 10 percent. The first figure shows a shift by +10% for each color and the second figure -10%.

Similar to the brightness gradients but the following saturation gradients show a change of the YUV color 41.8680, -6.3439, 28.1798 by changing the saturation by 10% instead.

■ 41.8680, -6.3439,
28.1798

■ 41.8680, -6.3439,
28.1798

■ 255.0000, 0.0000,
0.0000

■ 18.8140, -7.7963,
27.3501

■ 89.3200, -8.5388,
32.1684

■ 6.8770, -3.3904,
14.1399

■ 114.2170, -8.9810,
34.0127

■ 0.0000, 0.0000,
0.0000

■ 139.8150, -9.2758,
35.2422

■ 166.4130, -9.5706,
36.4718

■ 193.8970,
-10.3022, 37.8013

■ 218.7930, -9.2649,

31.7535

238.5350, -4.7008,
14.4398

41.8680, -6.3439,
28.1798

41.8680, -6.3439,
28.1798

36.9610, -7.3758,
32.4832

46.7750, -5.3121,
23.8763

31.4670, -8.1182,
37.3014

52.2690, -4.5696,
19.0581

26.4460, -9.5869,
41.7049

57.2900, -3.1010,
14.6547

22.3540, -10.0345,
45.2935

62.7840, -2.3585,
9.8364

67.6910, -1.3267,
5.5330

■ 72.5980, -0.2948,
1.2296

■ 78.2060, 0.8844,
-3.6887

■ 83.1130, 1.9163,
-7.9921

■ 88.6070, 2.6587,
-12.8103

Harmonies

Analogous

The Analogous color harmony consists of three colors that are next to each other on the color wheel.



42.6210, 1.6658, 25.7654



41.8680, -6.3439, 28.1798



41.5870, -13.6004, 22.2872

Triad

The Triadic color harmony groups three colors that are evenly spaced from another and form a triangle on the color wheel.



41.8680, -6.3439, 28.1798



35.7560, -6.7817, -18.2030



35.1930, 20.6109, -30.8643

Complementary

The Complementary color scheme is a pair of colors which are on the opposite of each other on the color wheel.



41.8680, -6.3439, 28.1798



60.1320, 6.3439, -28.1798

Split Complementary

Split-complementary colors differ from the complementary color scheme. The scheme consists of three colors, the original color and two neighbors of the complement color.



36.8570, 16.8325, -32.3236



41.8680, -6.3439, 28.1798



34.3830, 2.2762, -30.1539

Square

The Square scheme is like the rectangle color scheme, but the four colors are evenly spaced on the color wheel.



41.8680, -6.3439, 28.1798



39.1620, -15.8559, -1.0191



36.4350, 10.1385, -31.9535



42.6910, 15.4353, -4.1140

Rectangle

The Rectangle color scheme consists of four colors that form a rectangle on the color wheel.



41.8680, -6.3439, 28.1798



41.4030, -17.9467, 16.3096



36.4350, 10.1385, -31.9535



36.2530, 19.5953, -31.7939

Sweetspot

The Sweet Spot groups the original color and five complimentary colors.



41.8680, -6.3439, 28.1798



83.7950, -2.3639, 11.5808



46.4000, 13.6068, 22.4512



40.4030, -1.1847, 6.6626



176.0000, 0.0000, 0.0000



48.0000, 0.0000, 0.0000

Same Dimension

The Same Dimension uses a secret algorithm to generate beautiful new colors.



41.8680, -6.3439, 28.1798



46.0550, -9.8871, 44.6788



54.0810, -12.8579, 17.4690



35.3100, -0.1528, 2.3591



30.7260, -14.1619, 62.5073



69.3400, -31.7196, 140.8988

Inverse Universe

The Inverse Universe completely reimagines the original color for something new.



41.8680, -6.3439, 28.1798



46.0550, -9.8871, 44.6788



47.9190, 12.8579, -17.4690



35.3100, -0.1528, 2.3591



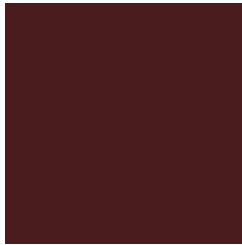
30.7260, -14.1619, 62.5073



69.3400, -31.7196, 140.8988

Previews

White Background



This preview shows how the YUV color 41.8680, -6.3439, 28.1798 looks on a white background.

Color Contrast Check

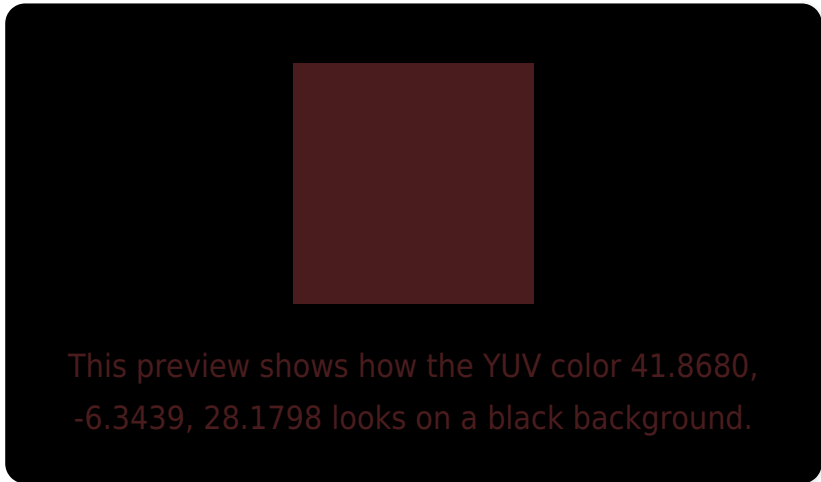
Large Text (above 18pt) WCAG AA ✓ Pass

Any Text WCAG AA ✓ Pass

Large Text (above 18pt) WCAG AAA ✓ Pass

Any Text WCAG AAA ✓ Pass

Black Background



Color Contrast Check

Large Text (above 18pt) WCAG AA × Fail

Any Text WCAG AA × Fail

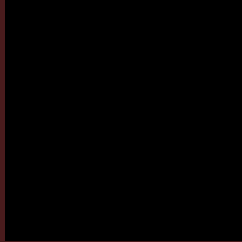
Large Text (above 18pt) WCAG AAA × Fail

Any Text WCAG AAA × Fail

If you want to check with other color combinations, try the [Color Contrast Checker](#).

YUV 41.8680, -6.3439, 28.1798

Background



This preview shows how black text looks on a background with the YUV color 41.8680, -6.3439, 28.1798.



This preview shows how white text looks on a background with the YUV color 41.8680, -6.3439,

Color Blindness Simulation

Color vision deficiency is a very complex topic, and I could not describe the different causes any better than Wikipedia does, so if you want to learn more, you should check out their [article about color blindness](#).

Dichromacy



Original Color

41.8680, -6.3439, 28.1798

Protanopia

43.6860, -3.7892, 2.0294

Deuteranopia

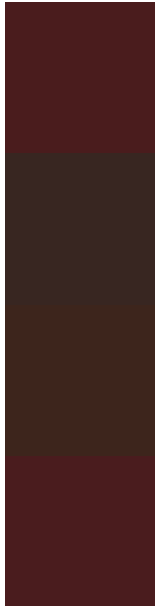
43.5790, -8.1734, 8.2622



Tritanopia

41.9820, -5.9071, 28.0798

Trichromacy



Original Color

41.8680, -6.3439, 28.1798

Protanomaly

42.8120, -4.8373, 11.5659

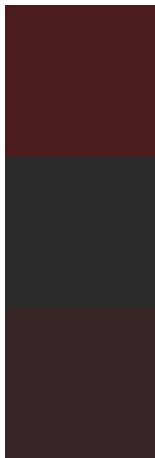
Deuteranomaly

43.1500, -7.4689, 15.6545

Tritanomaly

41.9820, -5.9071, 28.0798

Monochromacy



Original Color

41.8680, -6.3439, 28.1798

Achromatopsia

42.0000, 0.0000, 0.0000

Achromatomaly

42.0830, -2.5059, 10.4512

CSS Examples

Text

The CSS property to change the color of the text to YUV 41.8680, -6.3439, 28.1798 is called "color". The color property can be set on classes, ids or directly on the HTML element.

This example shows how text in the color `rgb(74, 28, 29)` looks like.

```
.text, #text, p{  
    color:rgb(74, 28, 29)  
}
```

If you want to add a text shadow in that color use the text-shadow property, you can generate a text shadow directly with our [CSS Text Shadow Generator](#).

Here you see how black text with a 4 pixel rgb(74, 28, 29) colored shadow looks like.

```
.shadow{ text-shadow: 4px 4px 2px rgb(74, 28, 29) }
```

Border

The CSS property to change the border of an element to YUV 41.8680, -6.3439, 28.1798 is called "border". The border property can be set on classes, ids or directly on the HTML element.

This example shows the color as border, it can be applied via the CSS property "border" or "border-color".

```
.border, #border, table{ border:4px solid rgb(74, 28, 29) }
```


If only the border color should be changed use the property `border-color`.

```
.border{ border-color:rgb(74, 28, 29) }
```

If you want to add a box shadow in that color use:

Here you see how a box with a 4 pixel `rgb(74, 28, 29)` colored shadow looks like.

```
.boxshadow{ -moz-box-shadow:4px 4px 4px  
4px rgb(74, 28, 29); -webkit-box-  
shadow:4px 4px 4px 4px rgb(74, 28, 29);  
box-shadow:4px 4px 4px 4px rgb(74, 28, 29)  
}
```

Background

The CSS property to change the background color of an element to YUV 41.8680, -6.3439, 28.1798 is called "background". The background property can be set on classes, ids or directly on the HTML element.

```
.background, #background, body{  
background: rgb(74, 28, 29) }
```

If only the background color should be changed can be used:

```
.background{ background-color: rgb(74, 28,  
29) }
```

This example shows the color as background, it is applied via the CSS property "background".

To optimize and compress your CSS code, you can use our [online CSS compressor and optimizer](#) based on csstidy. If you want to create a linear or radial gradient as background or border, check our [CSS Gradient Generator](#).

Hey! You found this booklet
interesting? Support Converting
Colors with the new Membership
Option!

The pro membership hides all ads, plus gives you
double the colors in the color bucket, and more
awesome pro features!

[Learn more, Memberships starting at \\$2.50/m!](#)

**Follow me
on Twitter!**

@ConvertingColor