

Converting Colors

YUV(42.5430, -10.1277,
28.4648)

Have a look what the booklet for
YUV(42.5430, -10.1277, 28.4648)
contains.

YUV(42.5430, -10.1277, 28.4648)	3
<i>Conversions</i>	4
<i>Details</i>	6
<i>Harmonies</i>	12
<i>Previews</i>	24
<i>Color Blindness Simulation</i>	28
<i>CSS Examples</i>	31

Color

**YUV(42.5430, -10.1277,
28.4648)**

Conversions

Conversions Part 1

Format	Color
Hex	4B1E16
RGB	75, 30, 22
RGB Percent	29%, 12%, 9%
CMY	0.7059, 0.8824, 0.9137
CMYK	0.00, 0.60, 0.71, 0.71
HSL	9°, 55%, 19%
HSV	9°, 71%, 29%
XYZ	3.5107, 2.4823, 1.0532
YIQ	42.5430, 29.3880, 7.0520

Conversions

Conversions Part 2

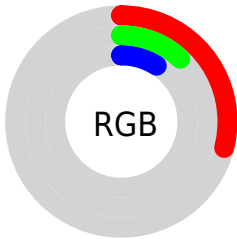
Format	Color
R_{YB}	75, 31, 22
Decimal	4922902
CIE Lab	17.84, 20.66, 15.73
CIE LCh	18, 25.967, 37.283
Yxy	2.4823, 0.4982, 0.3523
Android (android.graphics.Color)	4283112982 (0xFF4B1E16)
YUV	42.5430, -10.1277, 28.4648
Hunter-Lab	15.7554, 12.2028, 7.0656

Details

The YUV color **42.5430, -10.1277, 28.4648** is a dark color, and the websafe version is hex **663333**. A complement of this color would be **54.4570, 10.1277, -28.4648**, and the grayscale version is **43.0000, 0.0000, 0.0000**.

A 20% lighter version of the original color is **89.4080, -12.0331, 32.9682**, and **7.2900, -3.1010, 14.6547** is the 20% darker color. If you saturate the color by 10%, you get **38.1090, -11.8857, 32.3534**, and if you desaturate by 10%, it is **46.8630, -8.8065, 24.6761**.

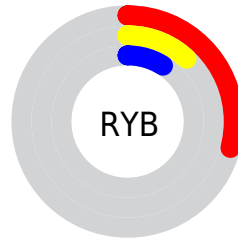
Distribution



Red (29%)

Green (12%)

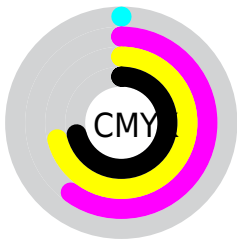
Blue (9%)



Red (29%)

Yellow (12%)

Blue (9%)

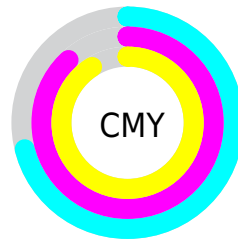


Cyan (0%)

Magenta (60%)

Yellow (71%)

Black (71%)



Cyan (71%)

Magenta (88%)

Yellow (91%)

Brightness & Saturation Gradients

These gradients show how the YUV color 42.5430, -10.1277, 28.4648 changes by changing the brightness by 10 percent. The first figure shows a shift by +10% for each color and the second figure -10%.

Similar to the brightness gradients but the following saturation gradients show a change of the YUV color 42.5430, -10.1277, 28.4648 by changing the saturation by 10% instead.

■ 42.5430, -10.1277,
28.4648

■ 42.5430, -10.1277,
28.4648

■ 254.2020, -3.0576,
0.6998

■ 19.9450, -9.8329,
27.2352

■ 89.4080, -12.0331,
32.9682

■ 7.2900, -3.1010,
14.6547

■ 114.7780,
-13.2016, 34.3977

■ 0.0000, 0.0000,
0.0000

■ 140.6750,
-13.6438, 36.2420

■ 167.4580,
-14.5228, 38.1863

■ 194.9420,
-15.2544, 39.5159

■ 218.3540,

-13.4855, 32.1385

238.5690, -9.6475,
14.4100

42.5430, -10.1277,
28.4648

42.5430, -10.1277,
28.4648

38.1090, -11.8857,
32.3534

46.8630, -8.8065,
24.6761

33.2020, -12.9176,
36.6568

51.8840, -7.3378,
20.2727

28.8820, -14.2388,
40.4455

56.3180, -5.5798,
16.3841

60.6380, -4.2585,
12.5955

65.5450, -3.2267,
8.2920

■ 69.9790, -1.4686,
4.4034

■ 75.0000, 0.0000,
0.0000

■ 79.3200, 1.3212,
-3.7886

■ 83.7540, 3.0793,
-7.6773

Harmonies

Analogous

The Analogous color harmony consists of three colors that are next to each other on the color wheel.



42.8450, -1.4026, 29.9539



42.5430, -10.1277, 28.4648



41.7240, -18.1049, 20.4131

Triad

The Triadic color harmony groups three colors that are evenly spaced from another and form a triangle on the color wheel.



42.5430, -10.1277, 28.4648



33.7160, -2.8180, -29.5689



38.3510, 21.0260, -23.9868

Complementary

The Complementary color scheme is a pair of colors which are on the opposite of each other on the color wheel.



42.5430, -10.1277, 28.4648



54.4570, 10.1277, -28.4648

Split Complementary

Split-complementary colors differ from the complementary color scheme. The scheme consists of three colors, the original color and two neighbors of the complement color.



37.6550, 19.8901, -33.0234



42.5430, -10.1277, 28.4648



36.5830, 5.6286, -32.0833

Square

The Square scheme is like the rectangle color scheme, but the four colors are evenly spaced on the color wheel.



42.5430, -10.1277, 28.4648



38.6880, -13.6502, -8.4964



38.0480, 13.7803, -33.3681



45.1050, 14.2452, 4.2929

Rectangle

The Rectangle color scheme consists of four colors that form a rectangle on the color wheel.



42.5430, -10.1277, 28.4648



41.0990, -20.2618, 12.1912



38.0480, 13.7803, -33.3681



36.2360, 22.0687, -31.7790

Sweetspot

The Sweet Spot groups the original color and five complimentary colors.



42.5430, -10.1277, 28.4648



84.7410, -3.8163, 10.7511



42.9770, 11.8433, 28.0842



40.7620, -2.3477, 6.3477



176.0000, 0.0000, 0.0000



48.0000, 0.0000, 0.0000

Same Dimension

The Same Dimension uses a secret algorithm to generate beautiful new colors.



42.5430, -10.1277, 28.4648



46.5620, -15.5601, 44.2341



57.8050, -17.6519, 15.0800



35.7830, -0.8790, 1.9443



39.3030, -19.3764, 54.9853



89.3150, -44.0323, 123.3807

Inverse Universe

The Inverse Universe completely reimagines the original color for something new.



54.4570, 10.1277, -28.4648



64.8510, 15.8495, -43.7193



39.1950, 17.6519, -15.0800



36.8040, 0.5896, -2.4591



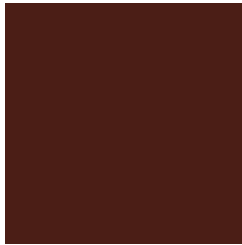
62.6970, 19.3764, -54.9853



140.6850, 44.0323, -123.3807

Previews

White Background



This preview shows how the YUV color 42.5430, -10.1277, 28.4648 looks on a white background.

Color Contrast Check

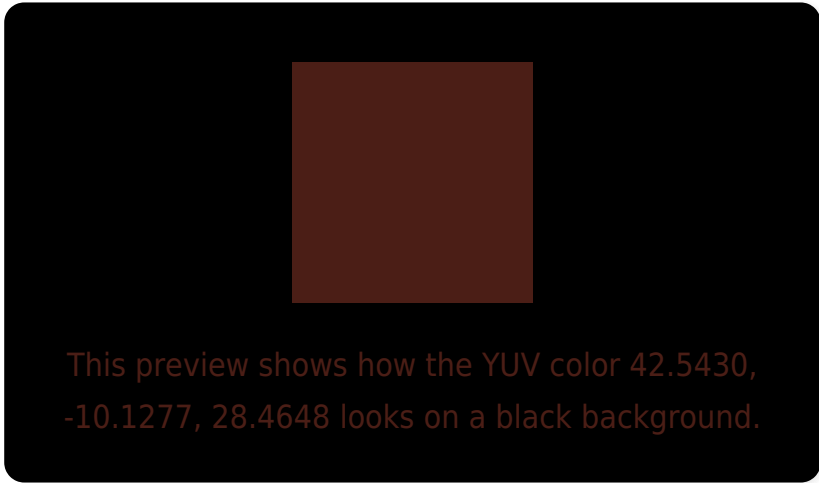
Large Text (above 18pt) WCAG AA ✓ Pass

Any Text WCAG AA ✓ Pass

Large Text (above 18pt) WCAG AAA ✓ Pass

Any Text WCAG AAA ✓ Pass

Black Background



Color Contrast Check

Large Text (above 18pt) WCAG AA × Fail

Any Text WCAG AA × Fail

Large Text (above 18pt) WCAG AAA × Fail

Any Text WCAG AAA × Fail

If you want to check with other color combinations, try the [Color Contrast Checker](#).

YUV 42.5430, -10.1277, 28.4648 Background



This preview shows how black text looks on a background with the YUV color 42.5430, -10.1277, 28.4648.

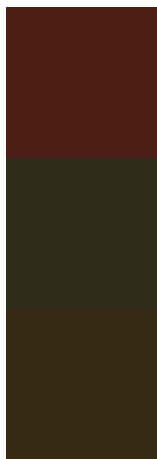


This preview shows how white text looks on a background with the YUV color 42.5430, -10.1277,

Color Blindness Simulation

Color vision deficiency is a very complex topic, and I could not describe the different causes any better than Wikipedia does, so if you want to learn more, you should check out their [article about color blindness](#).

Dichromacy



Original Color

42.5430, -10.1277, 28.4648

Protanopia

44.1440, -8.4520, 4.2587

Deuteranopia

43.8520, -12.2520, 9.7768



Tritanopia

42.9820, -5.9071, 28.0798

Trichromacy



Original Color

42.5430, -10.1277, 28.4648

Protanomaly

43.6720, -9.2053, 12.5657

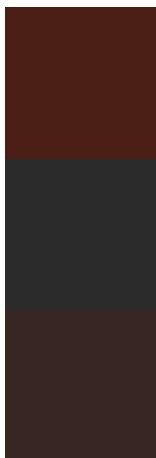
Deuteranomaly

43.1240, -11.4001, 16.5543

Tritanomaly

42.6400, -7.2175, 28.3797

Monochromacy



Original Color

42.5430, -10.1277, 28.4648

Achromatopsia

43.0000, 0.0000, 0.0000

Achromatomaly

42.7410, -3.8163, 10.7511

CSS Examples

Text

The CSS property to change the color of the text to YUV 42.5430, -10.1277, 28.4648 is called "color". The color property can be set on classes, ids or directly on the HTML element.

This example shows how text in the color `rgb(75, 30, 22)` looks like.

```
.text, #text, p{  
    color:rgb(75, 30, 22)  
}
```

If you want to add a text shadow in that color use the text-shadow property, you can generate a text shadow directly with our [CSS Text Shadow Generator](#).

Here you see how black text with a 4 pixel rgb(75, 30, 22) colored shadow looks like.

```
.shadow{ text-shadow: 4px 4px 2px rgb(75, 30, 22) }
```

Border

The CSS property to change the border of an element to YUV 42.5430, -10.1277, 28.4648 is called "border". The border property can be set on classes, ids or directly on the HTML element.

This example shows the color as border, it can be applied via the CSS property "border" or "border-color".

```
.border, #border, table{ border:4px solid rgb(75, 30, 22) }
```


If only the border color should be changed use the property border-color.

```
.border{ border-color:rgb(75, 30, 22) }
```

If you want to add a box shadow in that color use:

Here you see how a box with a 4 pixel rgb(75, 30, 22) colored shadow looks like.

```
.boxshadow{ -moz-box-shadow:4px 4px 4px  
4px rgb(75, 30, 22); -webkit-box-  
shadow:4px 4px 4px 4px rgb(75, 30, 22);  
box-shadow:4px 4px 4px 4px rgb(75, 30, 22)  
}
```

Background

The CSS property to change the background color of an element to YUV 42.5430, -10.1277, 28.4648 is called "background". The background property can be set on classes, ids or directly on the HTML element.

```
.background, #background, body{  
background: rgb(75, 30, 22) }
```

If only the background color should be changed can be used:

```
.background{ background-color: rgb(75, 30,  
22) }
```

This example shows the color as background, it is applied via the CSS property "background".

To optimize and compress your CSS code, you can use our [online CSS compressor and optimizer](#) based on csstidy. If you want to create a linear or radial gradient as background or border, check our [CSS Gradient Generator](#).

Hey! You found this booklet interesting? Support Converting Colors with the new Membership Option!

The pro membership hides all ads, plus gives you double the colors in the color bucket, and more awesome pro features!

[Learn more, Memberships starting at \\$2.50/m!](#)

**Follow me
on Twitter!**

@ConvertingColor