

Converting Colors

YUV(42.6720, -5.7543, 25.7207)

Have a look what the booklet for
YUV(42.6720, -5.7543, 25.7207)
contains.

YUV(42.6720, -5.7543, 25.7207)	3
<i>Conversions</i>	4
<i>Details</i>	6
<i>Harmonies</i>	12
<i>Previews</i>	24
<i>Color Blindness Simulation</i>	28
<i>CSS Examples</i>	31

Color

**YUV(42.6720, -5.7543,
25.7207)**

Conversions

Conversions Part 1

Format	Color
Hex	481E1F
RGB	72, 30, 31
RGB Percent	28%, 12%, 12%
CMY	0.7176, 0.8824, 0.8784
CMYK	0.00, 0.58, 0.57, 0.72
HSL	359°, 41%, 20%
HSV	359°, 58%, 28%
XYZ	3.3841, 2.4052, 1.5822
YIQ	42.6720, 24.7110, 9.2150

Conversions

Conversions Part 2

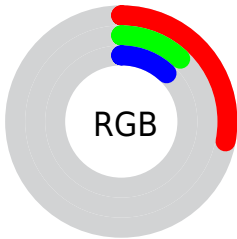
Format	Color
R_{YB}	72, 30, 31
Decimal	4726303
CIE Lab	17.48, 20.16, 8.93
CIE LCh	17, 22.048, 23.883
Yxy	2.4052, 0.4591, 0.3263
Android (android.graphics.Color)	4282916383 (0xFF481E1F)
YUV	42.6720, -5.7543, 25.7207
Hunter-Lab	15.5087, 11.8095, 4.8073

Details

The YUV color **42.6720, -5.7543, 25.7207** is a dark color, and the websafe version is hex **663333**. A complement of this color would be **59.3280, 5.7543, -25.7207**, and the grayscale version is **43.0000, 0.0000, 0.0000**.

A 20% lighter version of the original color is **89.3520, -7.0755, 29.5093**, and **6.2790, -3.0955, 12.9103** is the 20% darker color. If you saturate the color by 10%, you get **37.7650, -6.7861, 30.0241**, and if you desaturate by 10%, it is **47.5790, -4.7224, 21.4172**.

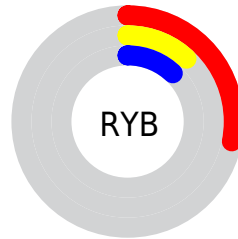
Distribution



 Red (28%)

 Green (12%)

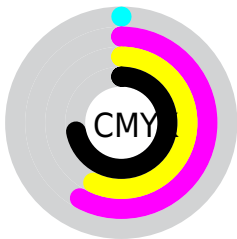
 Blue (12%)



 Red (28%)

 Yellow (12%)

 Blue (12%)

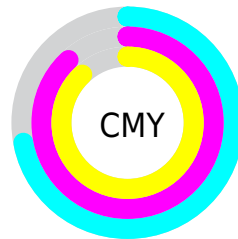


 Cyan (0%)

 Magenta (58%)

 Yellow (57%)

 Black (72%)



 Cyan (72%)

 Magenta (88%)

 Yellow (88%)

Brightness & Saturation Gradients

These gradients show how the YUV color 42.6720, -5.7543, 25.7207 changes by changing the brightness by 10 percent. The first figure shows a shift by +10% for each color and the second figure -10%.

Similar to the brightness gradients but the following saturation gradients show a change of the YUV color 42.6720, -5.7543, 25.7207 by changing the saturation by 10% instead.

■ 42.6720, -5.7543,
25.7207

■ 42.6720, -5.7543,
25.7207

■ 255.0000, 0.0000,
0.0000

■ 19.8460, -6.3331,
24.6911

■ 89.3520, -7.0755,
29.5093

■ 6.2790, -3.0955,
12.9103

■ 114.8360, -7.8071,
30.8388

■ 0.0000, 0.0000,
0.0000

■ 140.3200, -8.5388,
32.1684

■ 166.9180, -8.8336,
33.3979

■ 194.5160, -9.1284,
34.6275

■ 219.7220, -8.2439,

30.9388

■ 239.9370, -4.4059,
13.2103

■ 42.6720, -5.7543,
25.7207

■ 42.6720, -5.7543,
25.7207

■ 37.7650, -6.7861,
30.0241

■ 47.5790, -4.7224,
21.4172

■ 32.8580, -7.8180,
34.3275

■ 52.4860, -3.6906,
17.1138

■ 27.3640, -8.5605,
39.1458

■ 57.9800, -2.9481,
12.2955

■ 22.4570, -9.5923,
43.4492

■ 62.8870, -1.9163,
7.9921

■ 21.7560, -9.7397,
44.0640

■ 67.7940, -0.8844,
3.6887

■ 72.7010, 0.1474,
-0.6148

■ 77.6080, 1.1793,
-4.9182

■ 83.1020, 1.9217,
-9.7365

■ 88.0090, 2.9536,
-14.0399

Harmonies

Analogous

The Analogous color harmony consists of three colors that are next to each other on the color wheel.



43.3110, 1.8187, 23.4063



42.6720, -5.7543, 25.7207



42.3310, -11.9952, 20.7577

Triad

The Triadic color harmony groups three colors that are evenly spaced from another and form a triangle on the color wheel.



42.6720, -5.7543, 25.7207



37.3650, -7.0819, -15.2291



35.4380, 19.0111, -31.0791

Complementary

The Complementary color scheme is a pair of colors which are on the opposite of each other on the color wheel.



42.6720, -5.7543, 25.7207



59.3280, 5.7543, -25.7207

Split Complementary

Split-complementary colors differ from the complementary color scheme. The scheme consists of three colors, the original color and two neighbors of the complement color.



36.5150, 15.5221, -32.0237



42.6720, -5.7543, 25.7207



34.3830, 2.2762, -30.1539

Square

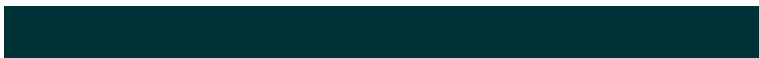
The Square scheme is like the rectangle color scheme, but the four colors are evenly spaced on the color wheel.



42.6720, -5.7543, 25.7207



40.0310, -13.8193, -0.9042



36.2070, 9.2649, -31.7535



43.0500, 14.2724, -4.4288

Rectangle

The Rectangle color scheme consists of four colors that form a rectangle on the color wheel.



42.6720, -5.7543, 25.7207



41.6740, -15.6153, 15.1949



36.2070, 9.2649, -31.7535



35.9110, 18.2849, -31.4939

Sweetspot

The Sweet Spot groups the original color and five complimentary colors.



42.6720, -5.7543, 25.7207



82.1970, -2.0691, 10.3512



47.0470, 12.3018, 21.0068



40.9900, -1.4741, 6.1478



176.0000, 0.0000, 0.0000



48.0000, 0.0000, 0.0000

Same Dimension

The Same Dimension uses a secret algorithm to generate beautiful new colors.



42.6720, -5.7543, 25.7207



47.9620, -8.8553, 40.3753



54.2980, -11.9789, 15.5247



33.1960, -0.5896, 2.4591



29.8290, -13.7197, 60.6630



68.4430, -31.2774, 139.0545

Inverse Universe

The Inverse Universe completely reimagines the original color for something new.



42.6720, -5.7543, 25.7207



47.9620, -8.8553, 40.3753



47.7020, 11.9789, -15.5247



33.1960, -0.5896, 2.4591



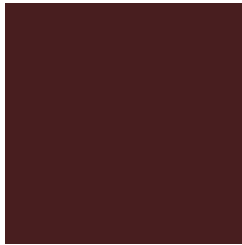
29.8290, -13.7197, 60.6630



68.4430, -31.2774, 139.0545

Previews

White Background



This preview shows how the YUV color 42.6720, -5.7543, 25.7207 looks on a white background.

Color Contrast Check

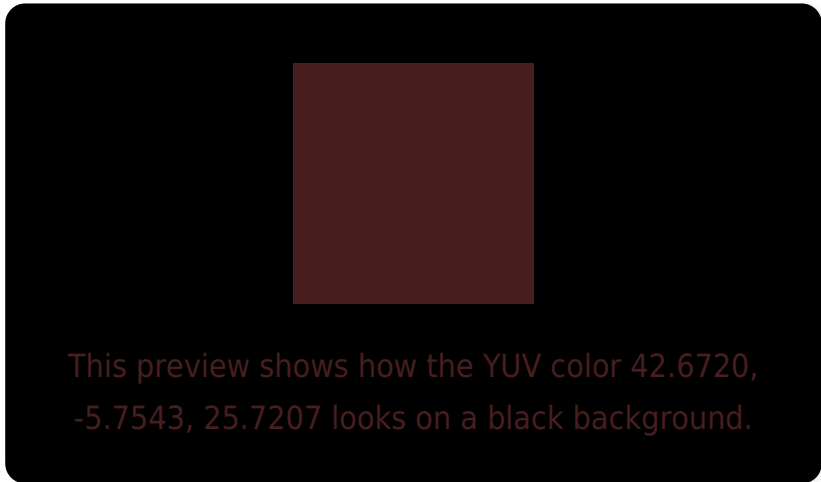
Large Text (above 18pt) WCAG AA ✓ Pass

Any Text WCAG AA ✓ Pass

Large Text (above 18pt) WCAG AAA ✓ Pass

Any Text WCAG AAA ✓ Pass

Black Background



Color Contrast Check

Large Text (above 18pt) WCAG AA × Fail

Any Text WCAG AA × Fail

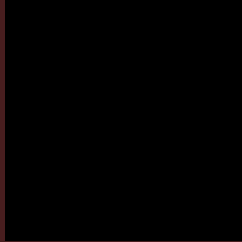
Large Text (above 18pt) WCAG AAA × Fail

Any Text WCAG AAA × Fail

If you want to check with other color combinations, try the [Color Contrast Checker](#).

YUV 42.6720, -5.7543, 25.7207

Background



This preview shows how black text looks on a background with the YUV color 42.6720, -5.7543, 25.7207.



This preview shows how white text looks on a background with the YUV color 42.6720, -5.7543,

Color Blindness Simulation

Color vision deficiency is a very complex topic, and I could not describe the different causes any better than Wikipedia does, so if you want to learn more, you should check out their [article about color blindness](#).

Dichromacy



Original Color

42.6720, -5.7543, 25.7207

Protanopia

43.8000, -3.3524, 1.9294

Deuteranopia

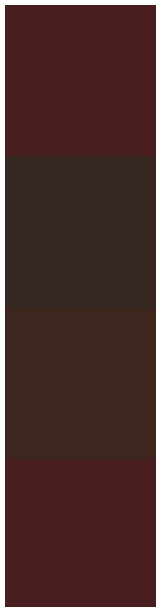
43.8070, -7.2999, 8.0623



Tritanopia

42.7860, -5.3175, 25.6207

Trichromacy



Original Color

42.6720, -5.7543, 25.7207

Protanomaly

43.3280, -4.1057, 10.2363

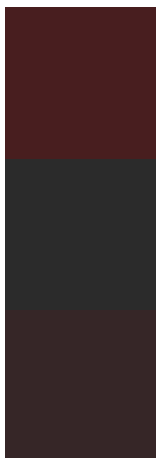
Deuteranomaly

43.6660, -6.7373, 14.3249

Tritanomaly

42.7860, -5.3175, 25.6207

Monochromacy



Original Color

42.6720, -5.7543, 25.7207

Achromatopsia

43.0000, 0.0000, 0.0000

Achromatomaly

42.8980, -1.9217, 9.7365

CSS Examples

Text

The CSS property to change the color of the text to YUV 42.6720, -5.7543, 25.7207 is called "color". The color property can be set on classes, ids or directly on the HTML element.

This example shows how text in the color `rgb(72, 30, 31)` looks like.

```
.text, #text, p{  
    color:rgb(72, 30, 31)  
}
```

If you want to add a text shadow in that color use the text-shadow property, you can generate a text shadow directly with our [CSS Text Shadow Generator](#).

Here you see how black text with a 4 pixel rgb(72, 30, 31) colored shadow looks like.

```
.shadow{ text-shadow: 4px 4px 2px rgb(72, 30, 31) }
```

Border

The CSS property to change the border of an element to YUV 42.6720, -5.7543, 25.7207 is called "border". The border property can be set on classes, ids or directly on the HTML element.

This example shows the color as border, it can be applied via the CSS property "border" or "border-color".

```
.border, #border, table{ border:4px solid rgb(72, 30, 31) }
```


If only the border color should be changed use the property `border-color`.

```
.border{ border-color:rgb(72, 30, 31) }
```

If you want to add a box shadow in that color use:

Here you see how a box with a 4 pixel `rgb(72, 30, 31)` colored shadow looks like.

```
.boxshadow{ -moz-box-shadow:4px 4px 4px  
4px rgb(72, 30, 31); -webkit-box-  
shadow:4px 4px 4px 4px rgb(72, 30, 31);  
box-shadow:4px 4px 4px 4px rgb(72, 30, 31)  
}
```

Background

The CSS property to change the background color of an element to YUV 42.6720, -5.7543, 25.7207 is called "background". The background property can be set on classes, ids or directly on the HTML element.

```
.background, #background, body{  
background: rgb(72, 30, 31) }
```

If only the background color should be changed can be used:

```
.background{ background-color: rgb(72, 30,  
31) }
```

This example shows the color as background, it is applied via the CSS property "background".

To optimize and compress your CSS code, you can use our [online CSS compressor and optimizer](#) based on csstidy. If you want to create a linear or radial gradient as background or border, check our [CSS Gradient Generator](#).

Hey! You found this booklet interesting? Support Converting Colors with the new Membership Option!

The pro membership hides all ads, plus gives you double the colors in the color bucket, and more awesome pro features!

[Learn more, Memberships starting at \\$2.50/m!](#)

**Follow me
on Twitter!**

@ConvertingColor