

Converting Colors

YUV(42.7590, -7.7692, 18.6284)

Have a look what the booklet for
YUV(42.7590, -7.7692, 18.6284)
contains.

YUV(42.7590, -7.7692, 18.6284)	3
<i>Conversions</i>	4
<i>Details</i>	6
<i>Harmonies</i>	12
<i>Previews</i>	24
<i>Color Blindness Simulation</i>	28
<i>CSS Examples</i>	31

Color

**YUV(42.7590, -7.7692,
18.6284)**

Conversions

Conversions Part 1

Format	Color
Hex	40231B
RGB	64, 35, 27
RGB Percent	25%, 14%, 11%
CMY	0.7490, 0.8627, 0.8941
CMYK	0.00, 0.45, 0.58, 0.75
HSL	13°, 41%, 18%
HSV	13°, 58%, 25%
XYZ	2.9132, 2.3712, 1.3411
YIQ	42.7590, 19.8520, 3.6600

Conversions

Conversions Part 2

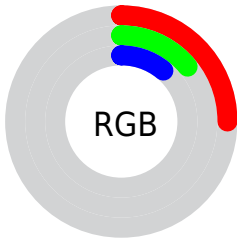
Format	Color
RYB	64, 37, 27
Decimal	4203291
CIELab	17.33, 12.83, 11.27
CIELCh	17, 17.078, 41.296
Yxy	2.3712, 0.4397, 0.3579
Android (android.graphics.Color)	4282393371 (0xFF40231B)
YUV	42.7590, -7.7692, 18.6284
Hunter-Lab	15.3986, 6.8221, 5.6156

Details

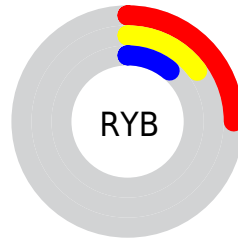
The YUV color **42.7590, -7.7692, 18.6284** is a dark color, and the websafe version is hex **663333**. A complement of this color would be **48.2410, 7.7692, -18.6284**, and the grayscale version is **43.0000, 0.0000, 0.0000**.

A 20% lighter version of the original color is **89.0260, -9.3798, 21.9022**, and **0.8970, -0.4422, 1.8443** is the 20% darker color. If you saturate the color by 10%, you get **39.1400, -8.9430, 21.8022**, and if you desaturate by 10%, it is **46.3780, -6.5954, 15.4545**.

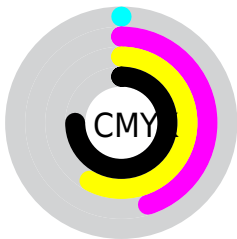
Distribution



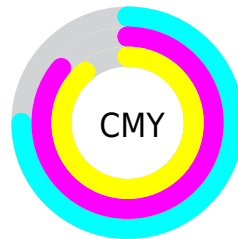
- Red (25%)
- Green (14%)
- Blue (11%)



- Red (25%)
- Yellow (15%)
- Blue (11%)



- Cyan (0%)
- Magenta (45%)
- Yellow (58%)
- Black (75%)



- Cyan (75%)
- Magenta (86%)
- Yellow (89%)

Brightness & Saturation Gradients

These gradients show how the YUV color 42.7590, -7.7692, 18.6284 changes by changing the brightness by 10 percent. The first figure shows a shift by +10% for each color and the second figure -10%.

Similar to the brightness gradients but the following saturation gradients show a change of the YUV color 42.7590, -7.7692, 18.6284 by changing the saturation by 10% instead.

■ 42.7590, -7.7692,
18.6284

■ 42.7590, -7.7692,
18.6284

■ 255.0000, 0.0000,
0.0000

■ 20.7760, -10.2426,
18.6134

■ 89.0260, -9.3798,
21.9022

■ 0.8970, -0.4422,
1.8443

■ 113.6240, -9.6746,
23.1318

■ 0.0000, 0.0000,
0.0000

■ 139.2220, -9.9694,
24.3613

■ 165.4070,
-10.5537, 25.0761

■ 193.0050,
-10.8485, 26.3056

■ 220.8910,

-11.2853, 26.4056

■ 241.7150, -7.7475,
11.6509

■ 42.7590, -7.7692,
18.6284

■ 42.7590, -7.7692,
18.6284

■ 39.1400, -8.9430,
21.8022

■ 46.3780, -6.5954,
15.4545

■ 35.4070, -10.5537,
25.0761

■ 50.1110, -4.9847,
12.1807

■ 31.7880, -11.7275,
28.2499

■ 53.7300, -3.8109,
9.0068

■ 28.0550, -13.3381,
31.5238

■ 57.4630, -2.2003,
5.7329

■ 27.3540, -13.4855,
32.1385

■ 61.0820, -1.0264,
2.5591

■ 64.7010, 0.1474,
-0.6148

■ 68.4340, 1.7580,
-3.8886

■ 72.0530, 2.9319,
-7.0625

■ 75.7860, 4.5425,
-10.3363

Harmonies

Analogous

The Analogous color harmony consists of three colors that are next to each other on the color wheel.



43.4370, -2.6804, 19.7878



42.7590, -7.7692, 18.6284



42.1020, -11.3893, 13.0655

Triad

The Triadic color harmony groups three colors that are evenly spaced from another and form a triangle on the color wheel.



42.7590, -7.7692, 18.6284



36.8360, -1.3981, -18.2732



41.7460, 11.9572, -8.5472

Complementary

The Complementary color scheme is a pair of colors which are on the opposite of each other on the color wheel.



42.7590, -7.7692, 18.6284



48.2410, 7.7692, -18.6284

Split Complementary

Split-complementary colors differ from the complementary color scheme. The scheme consists of three colors, the original color and two neighbors of the complement color.



36.0210, 14.7796, -27.2054



42.7590, -7.7692, 18.6284



34.1210, 6.3493, -29.9241

Square

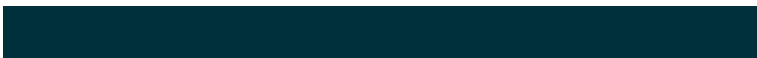
The Square scheme is like the rectangle color scheme, but the four colors are evenly spaced on the color wheel.



42.7590, -7.7692, 18.6284



39.8930, -7.8352, -6.9222



34.7880, 11.4435, -30.5091



44.2100, 8.2775, 5.0778

Rectangle

The Rectangle color scheme consists of four colors that form a rectangle on the color wheel.



42.7590, -7.7692, 18.6284



41.6560, -11.6624, 7.3177



34.7880, 11.4435, -30.5091



40.6420, 12.9945, -14.5950

Sweetspot

The Sweet Spot groups the original color and five complimentary colors.



42.7590, -7.7692, 18.6284



75.9470, -2.9319, 7.0625



41.4830, 7.6499, 19.7474



38.5660, -1.7580, 3.8886



171.0000, 0.0000, 0.0000



43.0000, 0.0000, 0.0000

Same Dimension

The Same Dimension uses a secret algorithm to generate beautiful new colors.



42.7590, -7.7692, 18.6284



50.9730, -12.3117, 28.9647



53.3250, -12.9782, 9.3620



31.4840, -0.7316, 1.3295



41.3300, -20.3757, 48.8226



95.7390, -47.1993, 112.4849

Inverse Universe

The Inverse Universe completely reimagines the original color for something new.



48.2410, 7.7692, -18.6284



59.6140, 12.0223, -29.4795



37.6750, 12.9782, -9.3620



31.5160, 0.7316, -1.3295



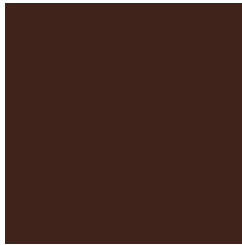
55.6700, 20.3757, -48.8226



128.8480, 46.9099, -112.9997

Previews

White Background



This preview shows how the YUV color 42.7590, -7.7692, 18.6284 looks on a white background.

Color Contrast Check

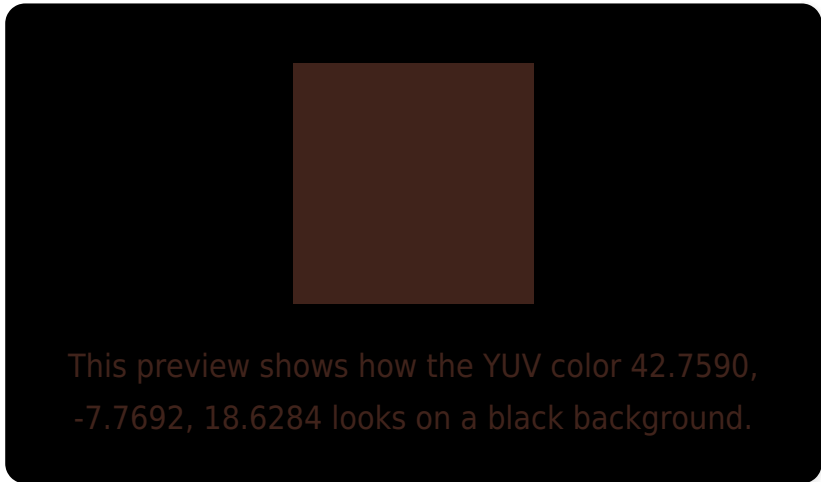
Large Text (above 18pt) WCAG AA ✓ Pass

Any Text WCAG AA ✓ Pass

Large Text (above 18pt) WCAG AAA ✓ Pass

Any Text WCAG AAA ✓ Pass

Black Background



Color Contrast Check

Large Text (above 18pt) WCAG AA × Fail

Any Text WCAG AA × Fail

Large Text (above 18pt) WCAG AAA × Fail

Any Text WCAG AAA × Fail

If you want to check with other color combinations, try the [Color Contrast Checker](#).

YUV 42.7590, -7.7692, 18.6284

Background



This preview shows how black text looks on a background with the YUV color 42.7590, -7.7692, 18.6284.



This preview shows how white text looks on a background with the YUV color 42.7590, -7.7692,

Color Blindness Simulation

Color vision deficiency is a very complex topic, and I could not describe the different causes any better than Wikipedia does, so if you want to learn more, you should check out their [article about color blindness](#).

Dichromacy



Original Color

42.7590, -7.7692, 18.6284

Protanopia

42.7140, -6.2680, 3.7588

Deuteranopia

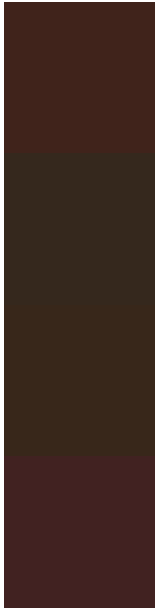
42.5790, -8.1734, 8.2622



Tritanopia

43.4970, -3.6960, 18.8581

Trichromacy



Original Color

42.7590, -7.7692, 18.6284

Protanomaly

42.6330, -6.7211, 9.0919

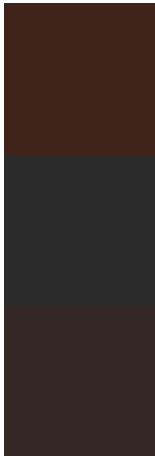
Deuteranomaly

42.6010, -8.1843, 11.7509

Tritanomaly

43.1550, -5.0064, 19.1581

Monochromacy



Original Color

42.7590, -7.7692, 18.6284

Achromatopsia

43.0000, 0.0000, 0.0000

Achromatomaly

42.9470, -2.9319, 7.0625

CSS Examples

Text

The CSS property to change the color of the text to YUV 42.7590, -7.7692, 18.6284 is called "color". The color property can be set on classes, ids or directly on the HTML element.

This example shows how text in the color `rgb(64, 35, 27)` looks like.

```
.text, #text, p{  
    color:rgb(64, 35, 27)  
}
```

If you want to add a text shadow in that color use the text-shadow property, you can generate a text shadow directly with our [CSS Text Shadow Generator](#).

Here you see how black text with a 4 pixel rgb(64, 35, 27) colored shadow looks like.

```
.shadow{ text-shadow: 4px 4px 2px rgb(64, 35, 27) }
```

Border

The CSS property to change the border of an element to YUV 42.7590, -7.7692, 18.6284 is called "border". The border property can be set on classes, ids or directly on the HTML element.

This example shows the color as border, it can be applied via the CSS property "border" or "border-color".

```
.border, #border, table{ border:4px solid rgb(64, 35, 27) }
```


If only the border color should be changed use the property border-color.

```
.border{ border-color:rgb(64, 35, 27) }
```

If you want to add a box shadow in that color use:

Here you see how a box with a 4 pixel rgb(64, 35, 27) colored shadow looks like.

```
.boxshadow{ -moz-box-shadow:4px 4px 4px  
4px rgb(64, 35, 27); -webkit-box-  
shadow:4px 4px 4px 4px rgb(64, 35, 27);  
box-shadow:4px 4px 4px 4px rgb(64, 35, 27)  
}
```

Background

The CSS property to change the background color of an element to YUV 42.7590, -7.7692, 18.6284 is called "background". The background property can be set on classes, ids or directly on the HTML element.

```
.background, #background, body{  
background: rgb(64, 35, 27) }
```

If only the background color should be changed can be used:

```
.background{ background-color: rgb(64, 35,  
27) }
```

This example shows the color as background, it is applied via the CSS property "background".

To optimize and compress your CSS code, you can use our [online CSS compressor and optimizer](#) based on csstidy. If you want to create a linear or radial gradient as background or border, check our [CSS Gradient Generator](#).

Hey! You found this booklet interesting? Support Converting Colors with the new Membership Option!

The pro membership hides all ads, plus gives you double the colors in the color bucket, and more awesome pro features!

[Learn more, Memberships starting at \\$2.50/m!](#)

**Follow me
on Twitter!**

@ConvertingColor