

Converting Colors

YUV(42.9720, -10.8322,
21.0726)

Have a look what the booklet for
YUV(42.9720, -10.8322, 21.0726)
contains.

| | |
|--|----|
| YUV(42.9720, -10.8322, 21.0726) | 3 |
| <i>Conversions</i> | 4 |
| <i>Details</i> | 6 |
| <i>Harmonies</i> | 12 |
| <i>Previews</i> | 24 |
| <i>Color Blindness Simulation</i> | 28 |
| <i>CSS Examples</i> | 31 |

Color

**YUV(42.9720, -10.8322,
21.0726)**

Conversions

Conversions Part 1

| Format | Color |
|---------------|--------------------------|
| Hex | 432315 |
| RGB | 67, 35, 21 |
| RGB Percent | 26%, 14%, 8% |
| CMY | 0.7373, 0.8627, 0.9176 |
| CMYK | 0.00, 0.48, 0.69, 0.74 |
| HSL | 18°, 52%, 17% |
| HSV | 18°, 69%, 26% |
| XYZ | 3.0511, 2.4495, 1.0215 |
| YIQ | 42.9720, 23.5660, 2.4300 |

Conversions

Conversions Part 2

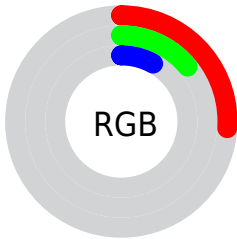
| Format | Color |
|-------------------------------------|-------------------------------|
| RYB | 67, 41, 21 |
| Decimal | 4399893 |
| CIELab | 17.69, 13.70, 15.90 |
| CIELCh | 18, 20.989, 49.261 |
| Yxy | 2.4495, 0.4678, 0.3756 |
| Android (android.graphics.Color) | 4282589973 (0xFF432315) |
| YUV | 42.9720, -10.8322, 21.0726 |
| Hunter-Lab | 15.6509, 7.4094, 7.0860 |

Details

The YUV color **42.9720, -10.8322, 21.0726** is a dark color, and the websafe version is hex **663333**. A complement of this color would be **45.0280, 10.8322, -21.0726**, and the grayscale version is **43.0000, 0.0000, 0.0000**.

A 20% lighter version of the original color is **89.5380, -12.5902, 24.9612**, and **2.9900, -1.4741, 6.1478** is the 20% darker color. If you saturate the color by 10%, you get **39.2390, -12.4428, 24.3464**, and if you desaturate by 10%, it is **46.7050, -9.2216, 17.7987**.

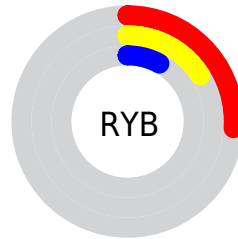
Distribution



 Red (26%)

 Green (14%)

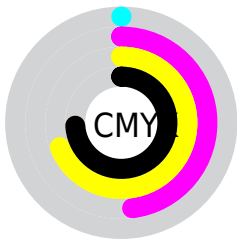
 Blue (8%)



 Red (26%)

 Yellow (16%)

 Blue (8%)

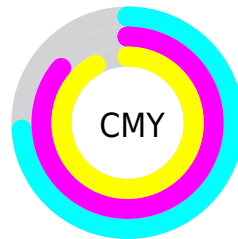


 Cyan (0%)

 Magenta (48%)

 Yellow (69%)

 Black (74%)



 Cyan (74%)

 Magenta (86%)

 Yellow (92%)

Brightness & Saturation Gradients

These gradients show how the YUV color 42.9720, -10.8322, 21.0726 changes by changing the brightness by 10 percent. The first figure shows a shift by +10% for each color and the second figure -10%.

Similar to the brightness gradients but the following saturation gradients show a change of the YUV color 42.9720, -10.8322, 21.0726 by changing the saturation by 10% instead.

■ 42.9720, -10.8322,
21.0726

■ 42.9720, -10.8322,
21.0726

■ 254.0880, -3.4944,
0.7998

■ 21.3740, -10.5374,
19.8430

■ 89.5380, -12.5902,
24.9612

■ 2.9900, -1.4741,
6.1478

■ 114.0220,
-13.3218, 26.2907

■ 0.0000, 0.0000,
0.0000

■ 139.6200,
-13.6167, 27.5203

■ 166.1040,
-14.3483, 28.8498

■ 193.5880,
-15.0799, 30.1793

■ 221.1750,

-15.3693, 29.6645

240.8030,
-11.2419, 12.4508

42.9720, -10.8322,
21.0726

42.9720, -10.8322,
21.0726

39.2390, -12.4428,
24.3464

46.7050, -9.2216,
17.7987

36.2070, -13.9061,
27.0055

49.7370, -7.7583,
15.1397

32.4740, -15.5167,
30.2793

53.4700, -6.1477,
11.8658

31.7730, -15.6641,
30.8941

57.2030, -4.5371,
8.5920

60.3490, -2.6371,
5.8329

■ 63.9680, -1.4632,
2.6591

■ 67.7010, 0.1474,
-0.6148

■ 70.8470, 2.0474,
-3.3738

■ 74.4660, 3.2213,
-6.5477

Harmonies

Analogous

The Analogous color harmony consists of three colors that are next to each other on the color wheel.



43.6010, -4.7333, 24.9059



42.9720, -10.8322, 21.0726



42.4780, -15.0257, 12.7358

Triad

The Triadic color harmony groups three colors that are evenly spaced from another and form a triangle on the color wheel.



42.9720, -10.8322, 21.0726



34.1550, 1.4026, -29.9539



43.3270, 14.1358, -7.3028

Complementary

The Complementary color scheme is a pair of colors which are on the opposite of each other on the color wheel.



42.9720, -10.8322, 21.0726



45.0280, 10.8322, -21.0726

Split Complementary

Split-complementary colors differ from the complementary color scheme. The scheme consists of three colors, the original color and two neighbors of the complement color.



35.9110, 18.2849, -31.4939



42.9720, -10.8322, 21.0726



35.9790, 8.3914, -31.5536

Square

The Square scheme is like the rectangle color scheme, but the four colors are evenly spaced on the color wheel.



42.9720, -10.8322, 21.0726



38.8600, -7.8190, -12.1552



36.8740, 14.3591, -32.3385



45.3570, 8.6980, 10.2109

Rectangle

The Rectangle color scheme consists of four colors that form a rectangle on the color wheel.



42.9720, -10.8322, 21.0726



41.4340, -15.0040, 5.7584



36.8740, 14.3591, -32.3385



41.0380, 15.7573, -14.0653

Sweetspot

The Sweet Spot groups the original color and five complimentary colors.



42.9720, -10.8322, 21.0726



77.2030, -4.5371, 8.5920



38.4020, 7.1968, 25.0804



37.7510, -2.3422, 4.6034



171.0000, 0.0000, 0.0000



43.0000, 0.0000, 0.0000

Same Dimension

The Same Dimension uses a secret algorithm to generate beautiful new colors.



42.9720, -10.8322, 21.0726



49.5560, -16.5431, 32.8384



56.4730, -17.4882, 9.2322



31.4840, -0.7316, 1.3295



46.0260, -22.6908, 44.7042



106.8920, -52.6978, 102.7037

Inverse Universe

The Inverse Universe completely reimagines the original color for something new.



45.0280, 10.8322, -21.0726



52.8570, 16.8325, -32.3236



31.5270, 17.4882, -9.2322



31.5160, 0.7316, -1.3295



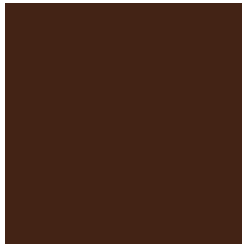
50.3870, 22.9802, -44.1894



117.1080, 52.6978, -102.7037

Previews

White Background



This preview shows how the YUV color 42.9720, -10.8322, 21.0726 looks on a white background.

Color Contrast Check

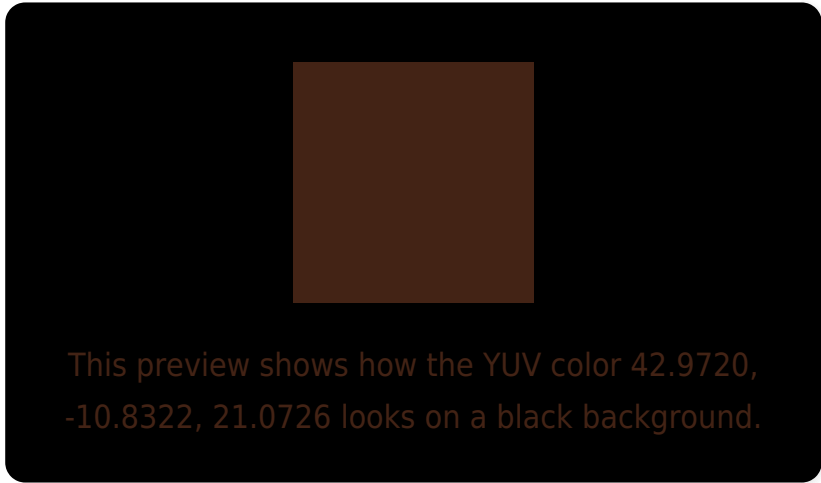
Large Text (above 18pt) WCAG AA ✓ Pass

Any Text WCAG AA ✓ Pass

Large Text (above 18pt) WCAG AAA ✓ Pass

Any Text WCAG AAA ✓ Pass

Black Background



Color Contrast Check

Large Text (above 18pt) WCAG AA × Fail

Any Text WCAG AA × Fail

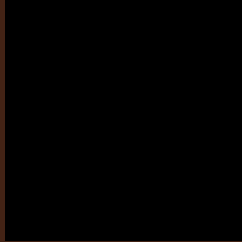
Large Text (above 18pt) WCAG AAA × Fail

Any Text WCAG AAA × Fail

If you want to check with other color combinations, try the [Color Contrast Checker](#).

YUV 42.9720, -10.8322, 21.0726

Background



This preview shows how black text looks on a background with the YUV color 42.9720, -10.8322, 21.0726.

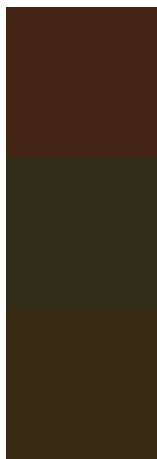


This preview shows how white text looks on a background with the YUV color 42.9720, -10.8322,

Color Blindness Simulation

Color vision deficiency is a very complex topic, and I could not describe the different causes any better than Wikipedia does, so if you want to learn more, you should check out their [article about color blindness](#).

Dichromacy



Original Color

42.9720, -10.8322, 21.0726

Protanopia

42.9160, -9.3256, 4.4587

Deuteranopia

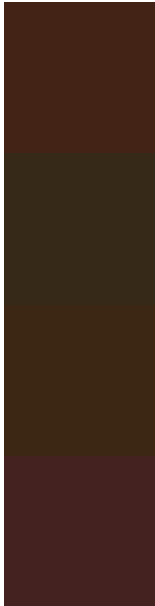
43.2650, -11.9626, 10.2916



Tritanopia

43.8070, -3.8489, 21.2173

Trichromacy



Original Color

42.9720, -10.8322, 21.0726

Protanomaly

43.1340, -9.9261, 10.4065

Deuteranomaly

42.8140, -11.2473, 14.1951

Tritanomaly

43.8240, -6.3222, 21.2024

Monochromacy



Original Color

42.9720, -10.8322, 21.0726

Achromatopsia

43.0000, 0.0000, 0.0000

Achromatomaly

43.0180, -3.9529, 7.8772

CSS Examples

Text

The CSS property to change the color of the text to YUV 42.9720, -10.8322, 21.0726 is called "color". The color property can be set on classes, ids or directly on the HTML element.

This example shows how text in the color `rgb(67, 35, 21)` looks like.

```
.text, #text, p{  
    color:rgb(67, 35, 21)  
}
```

If you want to add a text shadow in that color use the text-shadow property, you can generate a text shadow directly with our [CSS Text Shadow Generator](#).

Here you see how black text with a 4 pixel rgb(67, 35, 21) colored shadow looks like.

```
.shadow{ text-shadow: 4px 4px 2px rgb(67, 35, 21) }
```

Border

The CSS property to change the border of an element to YUV 42.9720, -10.8322, 21.0726 is called "border". The border property can be set on classes, ids or directly on the HTML element.

This example shows the color as border, it can be applied via the CSS property "border" or "border-color".

```
.border, #border, table{ border:4px solid rgb(67, 35, 21) }
```


If only the border color should be changed use the property border-color.

```
.border{ border-color:rgb(67, 35, 21) }
```

If you want to add a box shadow in that color use:

Here you see how a box with a 4 pixel rgb(67, 35, 21) colored shadow looks like.

```
.boxshadow{ -moz-box-shadow:4px 4px 4px  
4px rgb(67, 35, 21); -webkit-box-  
shadow:4px 4px 4px 4px rgb(67, 35, 21);  
box-shadow:4px 4px 4px 4px rgb(67, 35, 21)  
}
```

Background

The CSS property to change the background color of an element to YUV 42.9720, -10.8322, 21.0726 is called "background". The background property can be set on classes, ids or directly on the HTML element.

```
.background, #background, body{  
background: rgb(67, 35, 21) }
```

If only the background color should be changed can be used:

```
.background{ background-color: rgb(67, 35,  
21) }
```

This example shows the color as background, it is applied via the CSS property "background".

To optimize and compress your CSS code, you can use our [online CSS compressor and optimizer](#) based on csstidy. If you want to create a linear or radial gradient as background or border, check our [CSS Gradient Generator](#).

Hey! You found this booklet
interesting? Support Converting
Colors with the new Membership
Option!

The pro membership hides all ads, plus gives you
double the colors in the color bucket, and more
awesome pro features!

[Learn more, Memberships starting at \\$2.50/m!](#)

**Follow me
on Twitter!**

@ConvertingColor