

Converting Colors

YUV(43.3660, -1.6594, 18.9730)

Have a look what the booklet for
YUV(43.3660, -1.6594, 18.9730)
contains.

YUV(43.3660, -1.6594, 18.9730)	3
<i>Conversions</i>	4
<i>Details</i>	6
<i>Harmonies</i>	12
<i>Previews</i>	24
<i>Color Blindness Simulation</i>	28
<i>CSS Examples</i>	31

Color

**YUV(43.3660, -1.6594,
18.9730)**

Conversions

Conversions Part 1

Format	Color
Hex	412128
RGB	65, 33, 40
RGB Percent	25%, 13%, 16%
CMY	0.7451, 0.8706, 0.8431
CMYK	0.00, 0.49, 0.38, 0.75
HSL	347°, 33%, 19%
HSV	347°, 49%, 25%
XYZ	3.1068, 2.3647, 2.3002
YIQ	43.3660, 16.8250, 8.9610

Conversions

Conversions Part 2

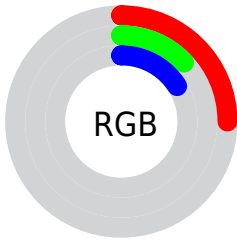
Format	Color
R_{YB}	65, 33, 40
Decimal	4268328
CIE Lab	17.30, 16.35, 2.12
CIE LCh	17, 16.490, 7.380
Yxy	2.3647, 0.3998, 0.3043
Android (android.graphics.Color)	4282458408 (0xFF412128)
YUV	43.3660, -1.6594, 18.9730
Hunter-Lab	15.3777, 9.1523, 1.8959

Details

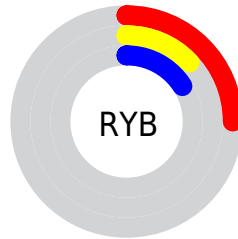
The YUV color **43.3660, -1.6594, 18.9730** is a dark color, and the websafe version is hex **663333**. A complement of this color would be **54.6340, 1.6594, -18.9730**, and the grayscale version is **43.0000, 0.0000, 0.0000**.

A 20% lighter version of the original color is **89.5620, -2.2491, 21.4321**, and **3.5880, -1.7689, 7.3773** is the 20% darker color. If you saturate the color by 10%, you get **39.2740, -2.1071, 22.5617**, and if you desaturate by 10%, it is **48.0450, -1.5012, 14.8695**.

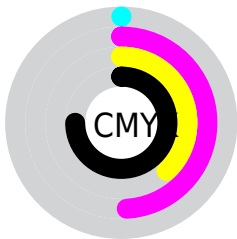
Distribution



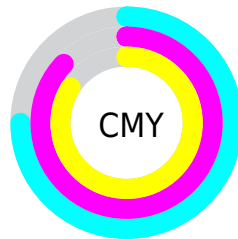
- Red (25%)
- Green (13%)
- Blue (16%)



- Red (25%)
- Yellow (13%)
- Blue (16%)



- Cyan (0%)
- Magenta (49%)
- Yellow (38%)
- Black (75%)



- Cyan (75%)
- Magenta (87%)
- Yellow (84%)

Brightness & Saturation Gradients

These gradients show how the YUV color 43.3660, -1.6594, 18.9730 changes by changing the brightness by 10 percent. The first figure shows a shift by +10% for each color and the second figure -10%.

Similar to the brightness gradients but the following saturation gradients show a change of the YUV color 43.3660, -1.6594, 18.9730 by changing the saturation by 10% instead.

■ 43.3660, -1.6594,
18.9730

■ 43.3660, -1.6594,
18.9730

■ 255.0000, 0.0000,
0.0000

■ 21.8820, -0.9278,
17.6435

■ 89.5620, -2.2491,
21.4321

■ 3.5880, -1.7689,
7.3773

■ 114.1600, -2.5439,
22.6617

■ 0.0000, 0.0000,
0.0000

■ 139.7580, -2.8387,
23.8912

■ 166.1710, -2.5493,
24.4060

■ 193.7690, -2.8441,
25.6356

■ 221.6550, -3.2809,

25.7356

242.5930, 0.6937,
10.8809

43.3660, -1.6594,
18.9730

43.3660, -1.6594,
18.9730

39.2740, -2.1071,
22.5617

48.0450, -1.5012,
14.8695

34.5950, -2.2653,
26.6652

52.1370, -1.0535,
11.2809

30.5030, -2.7130,
30.2539

56.8160, -0.8953,
7.1774

25.8240, -2.8712,
34.3574

60.9080, -0.4476,
3.5887

21.7320, -3.3189,
37.9460

65.5870, -0.2894,
-0.5148

■ 21.0310, -3.4663,
38.5608

■ 69.6790, 0.1583,
-4.1035

■ 74.4720, 0.7533,
-8.3069

■ 78.5640, 1.2009,
-11.8956

■ 83.2430, 1.3592,
-15.9991

Harmonies

Analogous

The Analogous color harmony consists of three colors that are next to each other on the color wheel.



43.8260, 4.0298, 14.1846



43.3660, -1.6594, 18.9730



42.9870, -6.8956, 18.4284

Triad

The Triadic color harmony groups three colors that are evenly spaced from another and form a triangle on the color wheel.



43.3660, -1.6594, 18.9730



39.7900, -8.2775, -5.0778



35.4940, 14.0535, -27.6202

Complementary

The Complementary color scheme is a pair of colors which are on the opposite of each other on the color wheel.



43.3660, -1.6594, 18.9730



54.6340, 1.6594, -18.9730

Split Complementary

Split-complementary colors differ from the complementary color scheme. The scheme consists of three colors, the original color and two neighbors of the complement color.



34.5600, 10.5699, -30.3091



43.3660, -1.6594, 18.9730



37.6190, -2.2772, -16.3289

Square

The Square scheme is like the rectangle color scheme, but the four colors are evenly spaced on the color wheel.



43.3660, -1.6594, 18.9730



41.4600, -11.0728, 4.8586



33.8930, 5.4758, -29.7242



41.4360, 12.1101, -10.9064

Rectangle

The Rectangle color scheme consists of four colors that form a rectangle on the color wheel.



43.3660, -1.6594, 18.9730



42.2810, -9.5055, 15.5396



33.8930, 5.4758, -29.7242



34.6570, 13.4801, -30.3942

Sweetspot

The Sweet Spot groups the original color and five complimentary colors.



43.3660, -1.6594, 18.9730



75.8160, -0.8953, 7.1774



44.1230, 10.2924, 12.1701



38.2070, -0.5951, 4.2035



171.0000, 0.0000, 0.0000



43.0000, 0.0000, 0.0000

Same Dimension

The Same Dimension uses a secret algorithm to generate beautiful new colors.



43.3660, -1.6594, 18.9730



50.7910, -2.8550, 29.1243



47.8510, -7.3215, 15.0397



31.0110, -0.0054, 1.7444



31.3970, -5.1257, 57.5338



72.5620, -11.6161, 132.8111

Inverse Universe

The Inverse Universe completely reimagines the original color for something new.



43.3660, -1.6594, 18.9730



50.7910, -2.8550, 29.1243



50.1490, 7.3215, -15.0397



31.0110, -0.0054, 1.7444



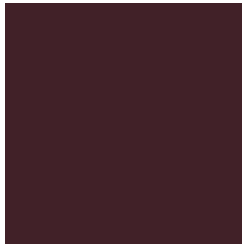
31.3970, -5.1257, 57.5338



72.5620, -11.6161, 132.8111

Previews

White Background



This preview shows how the YUV color 43.3660, -1.6594, 18.9730 looks on a white background.

Color Contrast Check

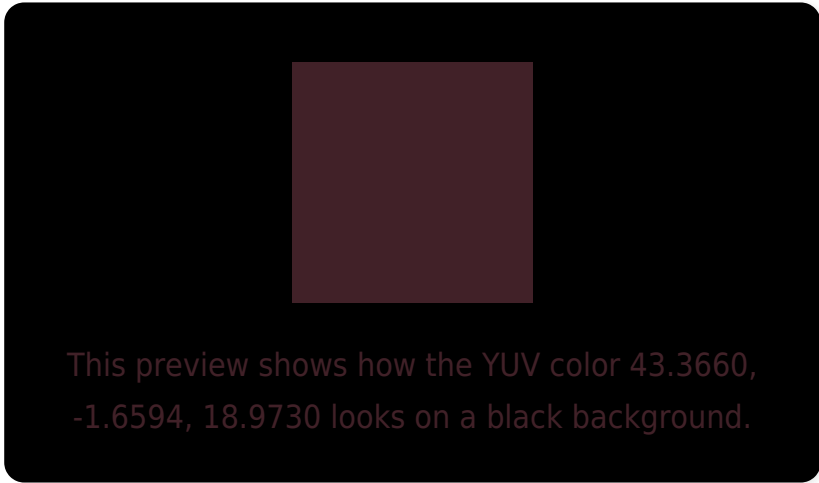
Large Text (above 18pt) WCAG AA ✓ Pass

Any Text WCAG AA ✓ Pass

Large Text (above 18pt) WCAG AAA ✓ Pass

Any Text WCAG AAA ✓ Pass

Black Background



Color Contrast Check

Large Text (above 18pt) WCAG AA × Fail

Any Text WCAG AA × Fail

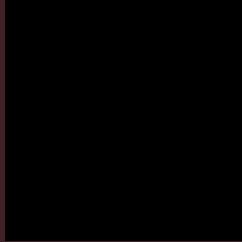
Large Text (above 18pt) WCAG AAA × Fail

Any Text WCAG AAA × Fail

If you want to check with other color combinations, try the [Color Contrast Checker](#).

YUV 43.3660, -1.6594, 18.9730

Background



This preview shows how black text looks on a background with the YUV color 43.3660, -1.6594, 18.9730.



This preview shows how white text looks on a background with the YUV color 43.3660, -1.6594,

Color Blindness Simulation

Color vision deficiency is a very complex topic, and I could not describe the different causes any better than Wikipedia does, so if you want to learn more, you should check out their [article about color blindness](#).

Dichromacy



Original Color

43.3660, -1.6594, 18.9730

Protanopia

43.3420, 1.3104, -0.2999

Deuteranopia

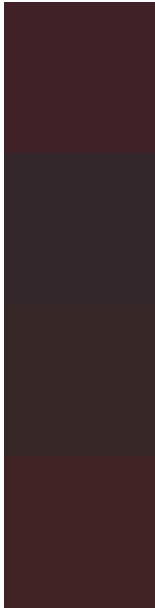
43.7510, -2.3422, 4.6034



Tritanopia

43.4970, -3.6960, 18.8581

Trichromacy



Original Color

43.3660, -1.6594, 18.9730

Protanomaly

43.1580, 0.4151, 6.8774

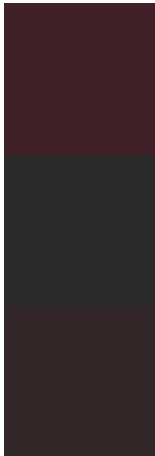
Deuteranomaly

43.7840, -2.3585, 9.8364

Tritanomaly

43.6110, -3.2592, 18.7582

Monochromacy



Original Color

43.3660, -1.6594, 18.9730

Achromatopsia

43.0000, 0.0000, 0.0000

Achromatomaly

42.9300, -0.4585, 7.0774

CSS Examples

Text

The CSS property to change the color of the text to YUV 43.3660, -1.6594, 18.9730 is called "color". The color property can be set on classes, ids or directly on the HTML element.

This example shows how text in the color `rgb(65, 33, 40)` looks like.

```
.text, #text, p{  
    color:rgb(65, 33, 40)  
}
```

If you want to add a text shadow in that color use the text-shadow property, you can generate a text shadow directly with our [CSS Text Shadow Generator](#).

Here you see how black text with a 4 pixel rgb(65, 33, 40) colored shadow looks like.

```
.shadow{ text-shadow: 4px 4px 2px rgb(65, 33, 40) }
```

Border

The CSS property to change the border of an element to YUV 43.3660, -1.6594, 18.9730 is called "border". The border property can be set on classes, ids or directly on the HTML element.

This example shows the color as border, it can be applied via the CSS property "border" or "border-color".

```
.border, #border, table{ border:4px solid rgb(65, 33, 40) }
```


If only the border color should be changed use the property `border-color`.

```
.border{ border-color:rgb(65, 33, 40) }
```

If you want to add a box shadow in that color use:

Here you see how a box with a 4 pixel `rgb(65, 33, 40)` colored shadow looks like.

```
.boxshadow{ -moz-box-shadow:4px 4px 4px  
4px rgb(65, 33, 40); -webkit-box-  
shadow:4px 4px 4px 4px rgb(65, 33, 40);  
box-shadow:4px 4px 4px 4px rgb(65, 33, 40)  
}
```

Background

The CSS property to change the background color of an element to YUV 43.3660, -1.6594, 18.9730 is called "background". The background property can be set on classes, ids or directly on the HTML element.

```
.background, #background, body{  
background: rgb(65, 33, 40) }
```

If only the background color should be changed can be used:

```
.background{ background-color: rgb(65, 33,  
40) }
```

This example shows the color as background, it is applied via the CSS property "background".

To optimize and compress your CSS code, you can use our [online CSS compressor and optimizer](#) based on csstidy. If you want to create a linear or radial gradient as background or border, check our [CSS Gradient Generator](#).

Hey! You found this booklet interesting? Support Converting Colors with the new Membership Option!

The pro membership hides all ads, plus gives you double the colors in the color bucket, and more awesome pro features!

[Learn more, Memberships starting at \\$2.50/m!](#)

**Follow me
on Twitter!**

@ConvertingColor