

Converting Colors

YUV(43.7640, -5.3067, 22.1320)

Have a look what the booklet for
YUV(43.7640, -5.3067, 22.1320)
contains.

YUV(43.7640, -5.3067, 22.1320)	3
<i>Conversions</i>	4
<i>Details</i>	6
<i>Harmonies</i>	12
<i>Previews</i>	24
<i>Color Blindness Simulation</i>	28
<i>CSS Examples</i>	31

Color

**YUV(43.7640, -5.3067,
22.1320)**

Conversions

Conversions Part 1

Format	Color
Hex	452121
RGB	69, 33, 33
RGB Percent	27%, 13%, 13%
CMY	0.7294, 0.8706, 0.8706
CMYK	0.00, 0.52, 0.52, 0.73
HSL	0°, 35%, 20%
HSV	0°, 52%, 27%
XYZ	3.2726, 2.4627, 1.7417
YIQ	43.7640, 21.4560, 7.6320

Conversions

Conversions Part 2

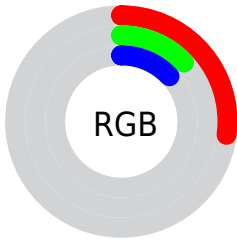
Format	Color
R_{YB}	69, 33, 33
Decimal	4530465
CIE _{Lab}	17.75, 17.19, 7.80
CIE _{LCh}	18, 18.877, 24.391
Yxy	2.4627, 0.4377, 0.3294
Android (android.graphics.Color)	4282720545 (0xFF452121)
YUV	43.7640, -5.3067, 22.1320
Hunter-Lab	15.6931, 9.7613, 4.4048

Details

The YUV color **43.7640, -5.3067, 22.1320** is a dark color, and the websafe version is hex **663333**. A complement of this color would be **58.2360, 5.3067, -22.1320**, and the grayscale version is **44.0000, 0.0000, 0.0000**.

A 20% lighter version of the original color is **90.1450, -6.4805, 25.3058**, and **5.3820, -2.6533, 11.0660** is the 20% darker color. If you saturate the color by 10%, you get **38.8570, -6.3385, 26.4354**, and if you desaturate by 10%, it is **48.6710, -4.2748, 17.8285**.

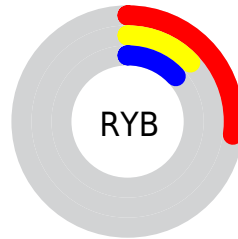
Distribution



Red (27%)

Green (13%)

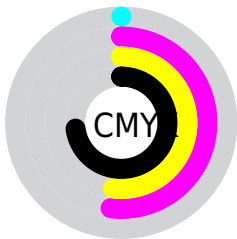
Blue (13%)



Red (27%)

Yellow (13%)

Blue (13%)

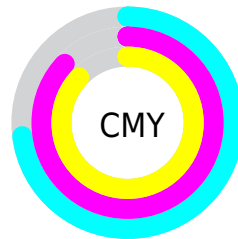


Cyan (0%)

Magenta (52%)

Yellow (52%)

Black (73%)



Cyan (73%)

Magenta (87%)

Yellow (87%)

Brightness & Saturation Gradients

These gradients show how the YUV color 43.7640, -5.3067, 22.1320 changes by changing the brightness by 10 percent. The first figure shows a shift by +10% for each color and the second figure -10%.

Similar to the brightness gradients but the following saturation gradients show a change of the YUV color 43.7640, -5.3067, 22.1320 by changing the saturation by 10% instead.

■ 43.7640, -5.3067,
22.1320

■ 43.7640, -5.3067,
22.1320

■ 255.0000, 0.0000,
0.0000

■ 21.9380, -5.8854,
21.1024

■ 90.1450, -6.4805,
25.3058

■ 5.3820, -2.6533,
11.0660

■ 115.0420, -6.9227,
27.1502

■ 0.0000, 0.0000,
0.0000

■ 141.2270, -7.5069,
27.8649

■ 167.8250, -7.8017,
29.0945

■ 195.0100, -8.3859,
29.8092

■ 221.8250, -7.8017,

29.0945

■ 242.0400, -3.9637,
11.3659

■ 43.7640, -5.3067,
22.1320

■ 43.7640, -5.3067,
22.1320

■ 38.8570, -6.3385,
26.4354

■ 48.6710, -4.2748,
17.8285

■ 33.9500, -7.3703,
30.7389

■ 53.5780, -3.2430,
13.5251

■ 29.0430, -8.4022,
35.0423

■ 58.4850, -2.2111,
9.2217

■ 24.1360, -9.4340,
39.3457

■ 63.3920, -1.1793,
4.9182

■ 20.6310, -10.1711,
42.4196

■ 68.2990, -0.1474,
0.6148

■ 72.5050, 0.7370,
-3.0739

■ 77.4120, 1.7689,
-7.3773

■ 82.3190, 2.8007,
-11.6808

■ 87.2260, 3.8326,
-15.9842

Harmonies

Analogous

The Analogous color harmony consists of three colors that are next to each other on the color wheel.



44.1750, 1.3927, 20.0175



43.7640, -5.3067, 22.1320



43.3630, -10.5320, 18.0986

Triad

The Triadic color harmony groups three colors that are evenly spaced from another and form a triangle on the color wheel.



43.7640, -5.3067, 22.1320



39.0170, -5.9244, -13.1699



38.8690, 15.3476, -22.6871

Complementary

The Complementary color scheme is a pair of colors which are on the opposite of each other on the color wheel.



43.7640, -5.3067, 22.1320



58.2360, 5.3067, -22.1320

Split Complementary

Split-complementary colors differ from the complementary color scheme. The scheme consists of three colors, the original color and two neighbors of the complement color.



36.1730, 14.2117, -31.7237



43.7640, -5.3067, 22.1320



33.9100, 3.0024, -29.7391

Square

The Square scheme is like the rectangle color scheme, but the four colors are evenly spaced on the color wheel.



43.7640, -5.3067, 22.1320



41.3130, -11.4933, -0.2745



35.5060, 9.1175, -31.1388



44.0780, 11.7935, -2.6994

Rectangle

The Rectangle color scheme consists of four colors that form a rectangle on the color wheel.



43.7640, -5.3067, 22.1320



42.7600, -12.6997, 13.3655



35.5060, 9.1175, -31.1388



35.4550, 16.5377, -31.0940

Sweetspot

The Sweet Spot groups the original color and five complimentary colors.



43.7640, -5.3067, 22.1320



79.1860, -2.0637, 8.6069



47.8680, 10.4181, 18.5328



39.6910, -1.3267, 5.5330



173.0000, 0.0000, 0.0000



46.0000, 0.0000, 0.0000

Same Dimension

The Same Dimension uses a secret algorithm to generate beautiful new colors.



43.7640, -5.3067, 22.1320



49.7440, -8.2548, 34.4275



54.3300, -10.5157, 12.8656



33.1960, -0.5896, 2.4591



29.6010, -14.5933, 60.8629



67.8730, -33.4614, 139.5544

Inverse Universe

The Inverse Universe completely reimagines the original color for something new.



58.2360, 5.3067, -22.1320



72.2560, 8.2548, -34.4275



47.6700, 10.5157, -12.8656



34.8040, 0.5896, -2.4591



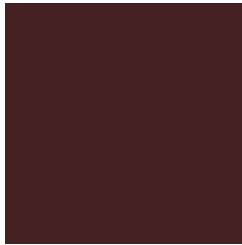
69.3990, 14.5933, -60.8629



159.1270, 33.4614, -139.5544

Previews

White Background



This preview shows how the YUV color 43.7640, -5.3067, 22.1320 looks on a white background.

Color Contrast Check

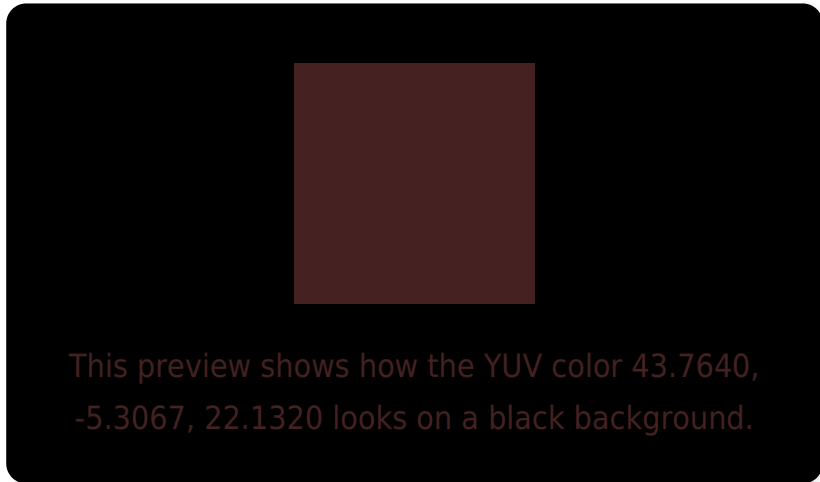
Large Text (above 18pt) WCAG AA ✓ Pass

Any Text WCAG AA ✓ Pass

Large Text (above 18pt) WCAG AAA ✓ Pass

Any Text WCAG AAA ✓ Pass

Black Background



Color Contrast Check

Large Text (above 18pt) WCAG AA × Fail

Any Text WCAG AA × Fail

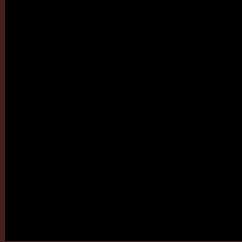
Large Text (above 18pt) WCAG AAA × Fail

Any Text WCAG AAA × Fail

If you want to check with other color combinations, try the [Color Contrast Checker](#).

YUV 43.7640, -5.3067, 22.1320

Background



This preview shows how black text looks on a background with the YUV color 43.7640, -5.3067, 22.1320.



This preview shows how white text looks on a background with the YUV color 43.7640, -5.3067,

Color Blindness Simulation

Color vision deficiency is a very complex topic, and I could not describe the different causes any better than Wikipedia does, so if you want to learn more, you should check out their [article about color blindness](#).

Dichromacy



Original Color

43.7640, -5.3067, 22.1320

Protanopia

43.9140, -2.9156, 1.8294

Deuteranopia

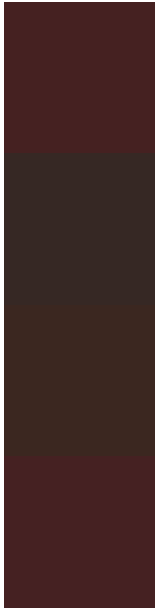
44.0350, -6.4263, 7.8623



Tritanopia

43.9920, -4.4331, 21.9320

Trichromacy



Original Color

43.7640, -5.3067, 22.1320

Protanomaly

43.7300, -3.8109, 9.0068

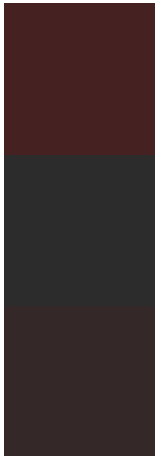
Deuteranomaly

44.1820, -6.0057, 12.9954

Tritanomaly

43.8780, -4.8699, 22.0320

Monochromacy



Original Color

43.7640, -5.3067, 22.1320

Achromatopsia

44.0000, 0.0000, 0.0000

Achromatomaly

43.8870, -1.9163, 7.9921

CSS Examples

Text

The CSS property to change the color of the text to YUV 43.7640, -5.3067, 22.1320 is called "color". The color property can be set on classes, ids or directly on the HTML element.

This example shows how text in the color `rgb(69, 33, 33)` looks like.

```
.text, #text, p{  
    color:rgb(69, 33, 33)  
}
```

If you want to add a text shadow in that color use the text-shadow property, you can generate a text shadow directly with our [CSS Text Shadow Generator](#).

Here you see how black text with a 4 pixel rgb(69, 33, 33) colored shadow looks like.

```
.shadow{ text-shadow: 4px 4px 2px rgb(69, 33, 33) }
```

Border

The CSS property to change the border of an element to YUV 43.7640, -5.3067, 22.1320 is called "border". The border property can be set on classes, ids or directly on the HTML element.

This example shows the color as border, it can be applied via the CSS property "border" or "border-color".

```
.border, #border, table{ border:4px solid rgb(69, 33, 33) }
```


If only the border color should be changed use the property `border-color`.

```
.border{ border-color:rgb(69, 33, 33) }
```

If you want to add a box shadow in that color use:

Here you see how a box with a 4 pixel `rgb(69, 33, 33)` colored shadow looks like.

```
.boxshadow{ -moz-box-shadow:4px 4px 4px  
4px rgb(69, 33, 33); -webkit-box-  
shadow:4px 4px 4px 4px rgb(69, 33, 33);  
box-shadow:4px 4px 4px 4px rgb(69, 33, 33)  
}
```

Background

The CSS property to change the background color of an element to YUV 43.7640, -5.3067, 22.1320 is called "background". The background property can be set on classes, ids or directly on the HTML element.

```
.background, #background, body{  
background: rgb(69, 33, 33) }
```

If only the background color should be changed can be used:

```
.background{ background-color: rgb(69, 33,  
33) }
```

This example shows the color as background, it is applied via the CSS property "background".

To optimize and compress your CSS code, you can use our [online CSS compressor and optimizer](#) based on csstidy. If you want to create a linear or radial gradient as background or border, check our [CSS Gradient Generator](#).

Hey! You found this booklet
interesting? Support Converting
Colors with the new Membership
Option!

The pro membership hides all ads, plus gives you
double the colors in the color bucket, and more
awesome pro features!

[Learn more, Memberships starting at \\$2.50/m!](#)

**Follow me
on Twitter!**

@ConvertingColor