

Converting Colors

YUV(43.9270, -5.8800, 19.3580)

Have a look what the booklet for
YUV(43.9270, -5.8800, 19.3580)
contains.

YUV(43.9270, -5.8800, 19.3580)	3
<i>Conversions</i>	4
<i>Details</i>	6
<i>Harmonies</i>	12
<i>Previews</i>	24
<i>Color Blindness Simulation</i>	28
<i>CSS Examples</i>	31

Color

**YUV(43.9270, -5.8800,
19.3580)**

Conversions

Conversions Part 1

Format	Color
Hex	422320
RGB	66, 35, 32
RGB Percent	26%, 14%, 13%
CMY	0.7412, 0.8627, 0.8745
CMYK	0.00, 0.47, 0.52, 0.74
HSL	5°, 35%, 19%
HSV	5°, 52%, 26%
XYZ	3.1085, 2.4646, 1.6784
YIQ	43.9270, 19.4390, 5.6390

Conversions

Conversions Part 2

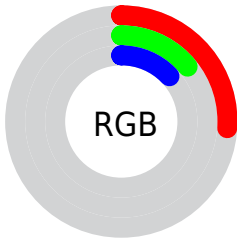
Format	Color
R_{YB}	66, 35, 32
Decimal	4334368
CIE Lab	17.76, 14.39, 8.43
CIE LCh	18, 16.677, 30.359
Yxy	2.4646, 0.4287, 0.3399
Android (android.graphics.Color)	4282524448 (0xFF422320)
YUV	43.9270, -5.8800, 19.3580
Hunter-Lab	15.6990, 7.8708, 4.6507

Details

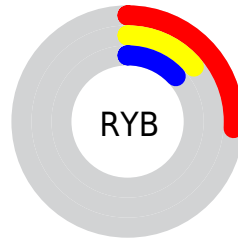
The YUV color **43.9270, -5.8800, 19.3580** is a dark color, and the websafe version is hex **663333**. A complement of this color would be **54.0730, 5.8800, -19.3580**, and the grayscale version is **44.0000, 0.0000, 0.0000**.

A 20% lighter version of the original color is **90.3080, -7.0538, 22.5319**, and **3.5880, -1.7689, 7.3773** is the 20% darker color. If you saturate the color by 10%, you get **39.6070, -7.2013, 23.1467**, and if you desaturate by 10%, it is **48.2470, -4.5588, 15.5694**.

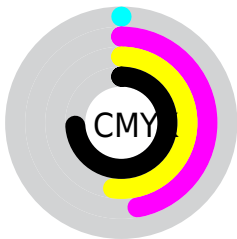
Distribution



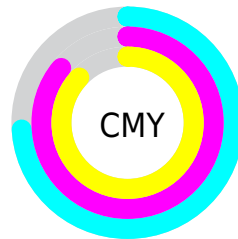
- Red (26%)
- Green (14%)
- Blue (13%)



- Red (26%)
- Yellow (14%)
- Blue (13%)



- Cyan (0%)
- Magenta (47%)
- Yellow (52%)
- Black (74%)



- Cyan (74%)
- Magenta (86%)
- Yellow (87%)

Brightness & Saturation Gradients

These gradients show how the YUV color 43.9270, -5.8800, 19.3580 changes by changing the brightness by 10 percent. The first figure shows a shift by +10% for each color and the second figure -10%.

Similar to the brightness gradients but the following saturation gradients show a change of the YUV color 43.9270, -5.8800, 19.3580 by changing the saturation by 10% instead.

■ 43.9270, -5.8800,
19.3580

■ 43.9270, -5.8800,
19.3580

255.0000, 0.0000,
0.0000

■ 21.9870, -6.8956,
18.4284

■ 90.3080, -7.0538,
22.5319

■ 3.5880, -1.7689,
7.3773

■ 114.9060, -7.3487,
23.7614

■ 0.0000, 0.0000,
0.0000

■ 140.5040, -7.6435,
24.9910

■ 167.3900, -8.0803,
25.0910

■ 194.8740, -8.8119,
26.4205

■ 222.5860, -8.6699,

27.5501

243.1000, -4.9793,
10.4363

43.9270, -5.8800,
19.3580

43.9270, -5.8800,
19.3580

39.6070, -7.2013,
23.1467

48.2470, -4.5588,
15.5694

35.4010, -8.0857,
26.8353

52.4530, -3.6743,
11.8807

31.0810, -9.4069,
30.6240

56.7730, -2.3531,
8.0921

26.8750, -10.2914,
34.3126

60.9790, -1.4686,
4.4034

23.2560, -11.4652,
37.4865

65.2990, -0.1474,
0.6148

■ 69.6190, 1.1738,
-3.1739

■ 73.8250, 2.0583,
-6.8625

■ 78.1450, 3.3795,
-10.6512

■ 82.3510, 4.2640,
-14.3398

Harmonies

Analogous

The Analogous color harmony consists of three colors that are next to each other on the color wheel.



44.7080, -0.3490, 18.6731



43.9270, -5.8800, 19.3580



43.7540, -10.2317, 15.1247

Triad

The Triadic color harmony groups three colors that are evenly spaced from another and form a triangle on the color wheel.



43.9270, -5.8800, 19.3580



39.4730, -4.1772, -13.5698



41.5280, 12.5577, -14.4951

Complementary

The Complementary color scheme is a pair of colors which are on the opposite of each other on the color wheel.



43.9270, -5.8800, 19.3580



54.0730, 5.8800, -19.3580

Split Complementary

Split-complementary colors differ from the complementary color scheme. The scheme consists of three colors, the original color and two neighbors of the complement color.



35.4720, 14.0643, -31.1089



43.9270, -5.8800, 19.3580



35.4480, 3.7231, -27.5799

Square

The Square scheme is like the rectangle color scheme, but the four colors are evenly spaced on the color wheel.



43.9270, -5.8800, 19.3580



41.1710, -9.4513, -1.9040



35.0330, 9.8437, -30.7239



44.2310, 9.7461, 0.6744

Rectangle

The Rectangle color scheme consists of four colors that form a rectangle on the color wheel.



43.9270, -5.8800, 19.3580



42.4930, -11.0890, 10.0916



35.0330, 9.8437, -30.7239



39.7230, 13.4476, -19.9281

Sweetspot

The Sweet Spot groups the original color and five complimentary colors.



43.9270, -5.8800, 19.3580



78.4740, -2.2057, 7.4773



45.7000, 8.5289, 17.8031



38.0930, -1.0318, 4.3034



171.0000, 0.0000, 0.0000



43.0000, 0.0000, 0.0000

Same Dimension

The Same Dimension uses a secret algorithm to generate beautiful new colors.



43.9270, -5.8800, 19.3580



52.0810, -9.4069, 30.6240



53.9060, -10.7997, 10.6064



30.8970, -0.4422, 1.8443



34.2860, -16.9030, 55.0002



78.7160, -38.8070, 127.4141

Inverse Universe

The Inverse Universe completely reimagines the original color for something new.



54.0730, 5.8800, -19.3580



67.9190, 9.4069, -30.6240



44.0940, 10.7997, -10.6064



32.1030, 0.4422, -1.8443



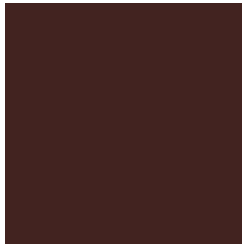
62.7140, 16.9030, -55.0002



145.8710, 38.5176, -127.9289

Previews

White Background



This preview shows how the YUV color 43.9270, -5.8800, 19.3580 looks on a white background.

Color Contrast Check

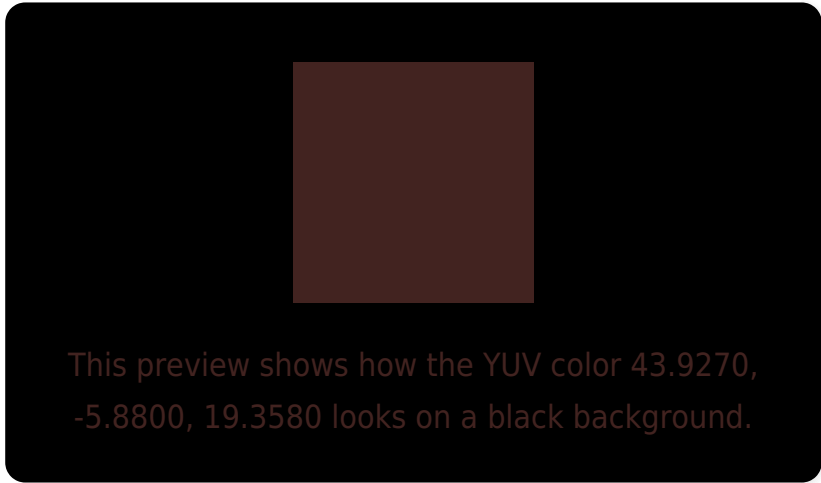
Large Text (above 18pt) WCAG AA ✓ Pass

Any Text WCAG AA ✓ Pass

Large Text (above 18pt) WCAG AAA ✓ Pass

Any Text WCAG AAA ✓ Pass

Black Background



Color Contrast Check

Large Text (above 18pt) WCAG AA × Fail

Any Text WCAG AA × Fail

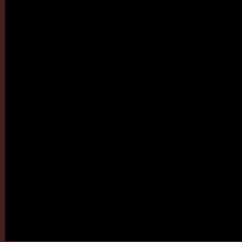
Large Text (above 18pt) WCAG AAA × Fail

Any Text WCAG AAA × Fail

If you want to check with other color combinations, try the [Color Contrast Checker](#).

YUV 43.9270, -5.8800, 19.3580

Background



This preview shows how black text looks on a background with the YUV color 43.9270, -5.8800, 19.3580.



This preview shows how white text looks on a background with the YUV color 43.9270, -5.8800,

Color Blindness Simulation

Color vision deficiency is a very complex topic, and I could not describe the different causes any better than Wikipedia does, so if you want to learn more, you should check out their [article about color blindness](#).

Dichromacy



Original Color

43.9270, -5.8800, 19.3580

Protanopia

43.9850, -3.9366, 2.6442

Deuteranopia

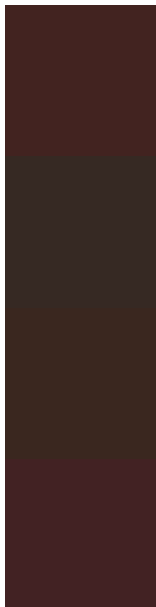
44.0350, -6.4263, 7.8623



Tritanopia

43.9100, -3.4066, 19.3729

Trichromacy



Original Color

43.9270, -5.8800, 19.3580

Protanomaly

44.2030, -4.5371, 8.5920

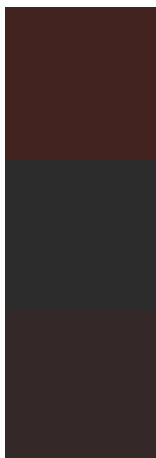
Deuteranomaly

43.7690, -6.2951, 12.4806

Tritanomaly

43.6820, -4.2802, 19.5729

Monochromacy



Original Color

43.9270, -5.8800, 19.3580

Achromatopsia

44.0000, 0.0000, 0.0000

Achromatomaly

44.1750, -2.0583, 6.8625

CSS Examples

Text

The CSS property to change the color of the text to YUV 43.9270, -5.8800, 19.3580 is called "color". The color property can be set on classes, ids or directly on the HTML element.

This example shows how text in the color `rgb(66, 35, 32)` looks like.

```
.text, #text, p{  
    color:rgb(66, 35, 32)  
}
```

If you want to add a text shadow in that color use the text-shadow property, you can generate a text shadow directly with our [CSS Text Shadow Generator](#).

Here you see how black text with a 4 pixel rgb(66, 35, 32) colored shadow looks like.

```
.shadow{ text-shadow: 4px 4px 2px rgb(66, 35, 32) }
```

Border

The CSS property to change the border of an element to YUV 43.9270, -5.8800, 19.3580 is called "border". The border property can be set on classes, ids or directly on the HTML element.

This example shows the color as border, it can be applied via the CSS property "border" or "border-color".

```
.border, #border, table{ border:4px solid rgb(66, 35, 32) }
```


If only the border color should be changed use the property `border-color`.

```
.border{ border-color:rgb(66, 35, 32) }
```

If you want to add a box shadow in that color use:

Here you see how a box with a 4 pixel `rgb(66, 35, 32)` colored shadow looks like.

```
.boxshadow{ -moz-box-shadow:4px 4px 4px  
4px rgb(66, 35, 32); -webkit-box-  
shadow:4px 4px 4px 4px rgb(66, 35, 32);  
box-shadow:4px 4px 4px 4px rgb(66, 35, 32)  
}
```

Background

The CSS property to change the background color of an element to YUV 43.9270, -5.8800, 19.3580 is called "background". The background property can be set on classes, ids or directly on the HTML element.

```
.background, #background, body{  
background: rgb(66, 35, 32) }
```

If only the background color should be changed can be used:

```
.background{ background-color: rgb(66, 35,  
32) }
```

This example shows the color as background, it is applied via the CSS property "background".

To optimize and compress your CSS code, you can use our [online CSS compressor and optimizer](#) based on csstidy. If you want to create a linear or radial gradient as background or border, check our [CSS Gradient Generator](#).

Hey! You found this booklet
interesting? Support Converting
Colors with the new Membership
Option!

The pro membership hides all ads, plus gives you
double the colors in the color bucket, and more
awesome pro features!

[Learn more, Memberships starting at \\$2.50/m!](#)

**Follow me
on Twitter!**

@ConvertingColor