

Converting Colors

YUV(44.0020, -2.9590, 15.7842)

Have a look what the booklet for
YUV(44.0020, -2.9590, 15.7842)
contains.

YUV(44.0020, -2.9590, 15.7842)	3
<i>Conversions</i>	4
<i>Details</i>	6
<i>Harmonies</i>	12
<i>Previews</i>	24
<i>Color Blindness Simulation</i>	28
<i>CSS Examples</i>	31

Color

**YUV(44.0020, -2.9590,
15.7842)**

Conversions

Conversions Part 1

Format	Color
Hex	3E2426
RGB	62, 36, 38
RGB Percent	24%, 14%, 15%
CMY	0.7569, 0.8588, 0.8510
CMYK	0.00, 0.42, 0.39, 0.76
HSL	355°, 27%, 19%
HSV	355°, 42%, 24%
XYZ	2.9673, 2.4258, 2.1456
YIQ	44.0020, 14.8540, 6.1340

Conversions

Conversions Part 2

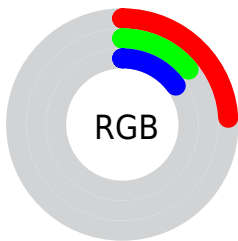
Format	Color
RYB	62, 36, 38
Decimal	4072486
CIELab	17.58, 12.70, 3.88
CIELCh	18, 13.277, 16.973
Yxy	2.4258, 0.3936, 0.3218
Android (android.graphics.Color)	4282262566 (0xFF3E2426)
YUV	44.0020, -2.9590, 15.7842
Hunter-Lab	15.5751, 6.7511, 2.7350

Details

The YUV color **44.0020, -2.9590, 15.7842** is a dark color, and the websafe version is hex **333333**. A complement of this color would be **53.9980, 2.9590, -15.7842**, and the grayscale version is **44.0000, 0.0000, 0.0000**.

A 20% lighter version of the original color is **90.1980, -3.5486, 18.2434**, and **1.7940, -0.8844, 3.6887** is the 20% darker color. If you saturate the color by 10%, you get **39.7960, -3.8434, 19.4729**, and if you desaturate by 10%, it is **48.2080, -2.0745, 12.0956**.

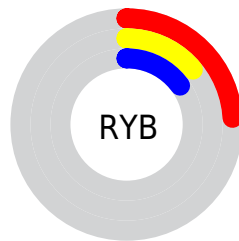
Distribution



Red (24%)

Green (14%)

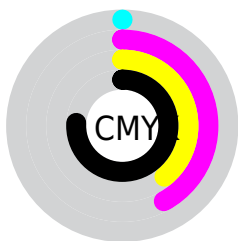
Blue (15%)



Red (24%)

Yellow (14%)

Blue (15%)

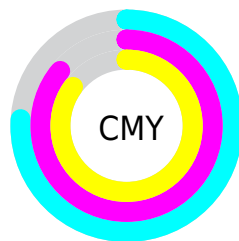


Cyan (0%)

Magenta (42%)

Yellow (39%)

Black (76%)



Cyan (76%)

Magenta (86%)

Yellow (85%)

Brightness & Saturation Gradients

These gradients show how the YUV color 44.0020, -2.9590, 15.7842 changes by changing the brightness by 10 percent. The first figure shows a shift by +10% for each color and the second figure -10%.

Similar to the brightness gradients but the following saturation gradients show a change of the YUV color 44.0020, -2.9590, 15.7842 by changing the saturation by 10% instead.

■ 44.0020, -2.9590,
15.7842

■ 44.0020, -2.9590,
15.7842

■ 255.0000, 0.0000,
0.0000

■ 22.9910, -2.9536,
14.0399

■ 90.1980, -3.5486,
18.2434

■ 1.7940, -0.8844,
3.6887

■ 114.4970, -3.6960,
18.8581

■ 0.0000, 0.0000,
0.0000

■ 140.0950, -3.9908,
20.0877

■ 166.9810, -4.4276,
20.1877

■ 193.6930, -4.2856,
21.3172

■ 221.9920, -4.4331,

21.9320

244.5990, -1.7743,
9.1217

44.0020, -2.9590,
15.7842

44.0020, -2.9590,
15.7842

39.7960, -3.8434,
19.4729

48.2080, -2.0745,
12.0956

35.7040, -4.2911,
23.0616

52.3000, -1.6269,
8.5069

30.9110, -4.8861,
27.2651

57.0930, -1.0318,
4.3034

26.7050, -5.7706,
30.9537

61.2990, -0.1474,
0.6148

22.4990, -6.6550,
34.6424

65.5050, 0.7370,
-3.0739

■ 19.1080, -6.9552,
37.6163

■ 69.5970, 1.1847,
-6.6626

■ 73.8030, 2.0691,
-10.3512

■ 78.5960, 2.6642,
-14.5547

■ 82.8020, 3.5486,
-18.2434

Harmonies

Analogous

The Analogous color harmony consists of three colors that are next to each other on the color wheel.



44.2450, 1.8512, 12.9401



44.0020, -2.9590, 15.7842



43.6660, -6.7373, 14.3249

Triad

The Triadic color harmony groups three colors that are evenly spaced from another and form a triangle on the color wheel.



44.0020, -2.9590, 15.7842



40.8760, -5.3619, -6.9073



40.2460, 10.2317, -15.1247

Complementary

The Complementary color scheme is a pair of colors which are on the opposite of each other on the color wheel.



44.0020, -2.9590, 15.7842



53.9980, 2.9590, -15.7842

Split Complementary

Split-complementary colors differ from the complementary color scheme. The scheme consists of three colors, the original color and two neighbors of the complement color.



37.3760, 9.6746, -23.1318



44.0020, -2.9590, 15.7842



39.0860, -0.5354, -14.9844

Square

The Square scheme is like the rectangle color scheme, but the four colors are evenly spaced on the color wheel.



44.0020, -2.9590, 15.7842



41.8340, -8.2992, 1.8996



36.9370, 5.4541, -22.7467



42.9700, 8.8888, -4.3587

Rectangle

The Rectangle color scheme consists of four colors that form a rectangle on the color wheel.



44.0020, -2.9590, 15.7842



43.1880, -8.4737, 11.2361



36.9370, 5.4541, -22.7467



39.5230, 10.0952, -17.9987

Sweetspot

The Sweet Spot groups the original color and five complimentary colors.



44.0020, -2.9590, 15.7842



74.4030, -1.1847, 6.6626



46.1400, 7.8190, 12.1552



36.2070, -0.5951, 4.2035



168.0000, 0.0000, 0.0000



41.0000, 0.0000, 0.0000

Same Dimension

The Same Dimension uses a secret algorithm to generate beautiful new colors.



44.0020, -2.9590, 15.7842



53.6010, -4.7333, 24.9059



50.2310, -7.0159, 10.3214



28.8970, -0.4422, 1.8443



28.9040, -10.7987, 57.0892



68.3160, -25.2988, 134.7809

Inverse Universe

The Inverse Universe completely reimagines the original color for something new.



44.0020, -2.9590, 15.7842



53.6010, -4.7333, 24.9059



47.7690, 7.0159, -10.3214



28.8970, -0.4422, 1.8443



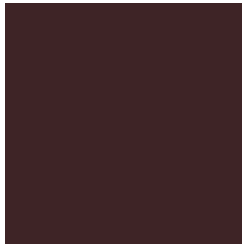
28.9040, -10.7987, 57.0892



68.3160, -25.2988, 134.7809

Previews

White Background



This preview shows how the YUV color 44.0020, -2.9590, 15.7842 looks on a white background.

Color Contrast Check

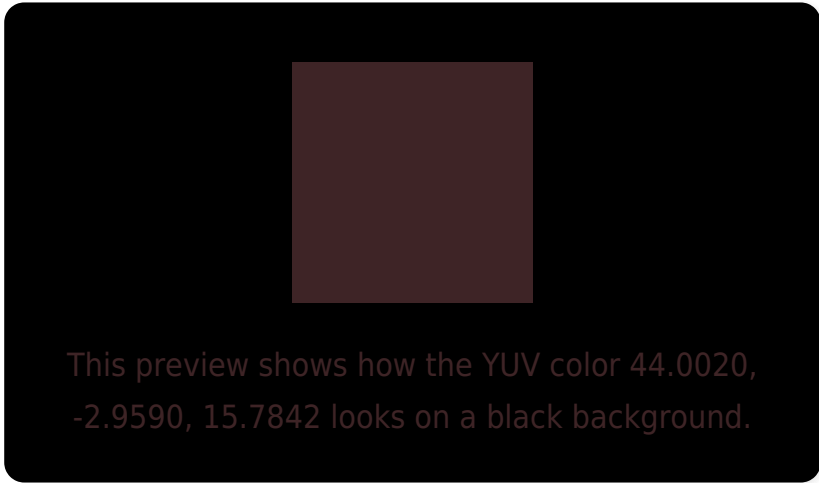
Large Text (above 18pt) WCAG AA ✓ Pass

Any Text WCAG AA ✓ Pass

Large Text (above 18pt) WCAG AAA ✓ Pass

Any Text WCAG AAA ✓ Pass

Black Background



Color Contrast Check

Large Text (above 18pt) WCAG AA × Fail

Any Text WCAG AA × Fail

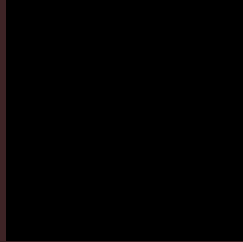
Large Text (above 18pt) WCAG AAA × Fail

Any Text WCAG AAA × Fail

If you want to check with other color combinations, try the [Color Contrast Checker](#).

YUV 44.0020, -2.9590, 15.7842

Background



This preview shows how black text looks on a background with the YUV color 44.0020, -2.9590, 15.7842.

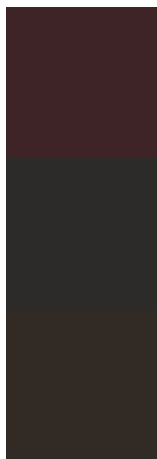


This preview shows how white text looks on a background with the YUV color 44.0020, -2.9590,

Color Blindness Simulation

Color vision deficiency is a very complex topic, and I could not describe the different causes any better than Wikipedia does, so if you want to learn more, you should check out their [article about color blindness](#).

Dichromacy



Original Color

44.0020, -2.9590, 15.7842

Protanopia

43.4840, -0.7316, 1.3295

Deuteranopia

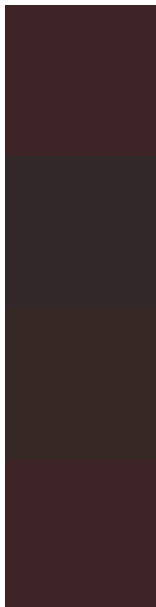
43.8220, -3.3632, 5.4181



Tritanopia

44.1160, -2.5222, 15.6843

Trichromacy



Original Color

44.0020, -2.9590, 15.7842

Protanomaly

43.4030, -1.1847, 6.6626

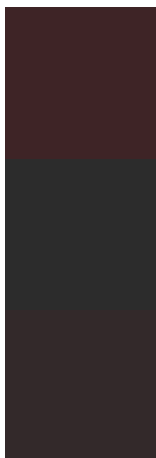
Deuteranomaly

43.8440, -3.3741, 8.9068

Tritanomaly

44.1160, -2.5222, 15.6843

Monochromacy



Original Color

44.0020, -2.9590, 15.7842

Achromatopsia

44.0000, 0.0000, 0.0000

Achromatomaly

44.1040, -1.0373, 6.0478

CSS Examples

Text

The CSS property to change the color of the text to YUV 44.0020, -2.9590, 15.7842 is called "color". The color property can be set on classes, ids or directly on the HTML element.

This example shows how text in the color `rgb(62, 36, 38)` looks like.

```
.text, #text, p{  
    color:rgb(62, 36, 38)  
}
```

If you want to add a text shadow in that color use the text-shadow property, you can generate a text shadow directly with our [CSS Text Shadow Generator](#).

Here you see how black text with a 4 pixel rgb(62, 36, 38) colored shadow looks like.

```
.shadow{ text-shadow: 4px 4px 2px rgb(62, 36, 38) }
```

Border

The CSS property to change the border of an element to YUV 44.0020, -2.9590, 15.7842 is called "border". The border property can be set on classes, ids or directly on the HTML element.

This example shows the color as border, it can be applied via the CSS property "border" or "border-color".

```
.border, #border, table{ border:4px solid rgb(62, 36, 38) }
```


If only the border color should be changed use the property `border-color`.

```
.border{ border-color:rgb(62, 36, 38) }
```

If you want to add a box shadow in that color use:

Here you see how a box with a 4 pixel `rgb(62, 36, 38)` colored shadow looks like.

```
.boxshadow{ -moz-box-shadow:4px 4px 4px  
4px rgb(62, 36, 38); -webkit-box-  
shadow:4px 4px 4px 4px rgb(62, 36, 38);  
box-shadow:4px 4px 4px 4px rgb(62, 36, 38)  
}
```

Background

The CSS property to change the background color of an element to YUV 44.0020, -2.9590, 15.7842 is called "background". The background property can be set on classes, ids or directly on the HTML element.

```
.background, #background, body{  
background: rgb(62, 36, 38) }
```

If only the background color should be changed can be used:

```
.background{ background-color: rgb(62, 36,  
38) }
```

This example shows the color as background, it is applied via the CSS property "background".

To optimize and compress your CSS code, you can use our [online CSS compressor and optimizer](#) based on csstidy. If you want to create a linear or radial gradient as background or border, check our [CSS Gradient Generator](#).

Hey! You found this booklet interesting? Support Converting Colors with the new Membership Option!

The pro membership hides all ads, plus gives you double the colors in the color bucket, and more awesome pro features!

[Learn more, Memberships starting at \\$2.50/m!](#)

**Follow me
on Twitter!**

@ConvertingColor